



Ohio

Jon Peterson Special Needs Scholarship Program

FY 2017 PROGRAM ADMINISTRATION REPORT

OFFICE OF NONPUBLIC EDUCATIONAL OPTIONS

Jon Peterson Special Needs Scholarship Program

FY 2017 PROGRAM ADMINISTRATION REPORT

Table of Contents

General Information About the Program	3
Student Participation	3
Resident Districts of Students	4
Scholarship Funds Disbursed Statewide by Grade	5
Scholarship Funds Disbursed Statewide by Disability Category	6
Scholarship Funds Disbursed Statewide by District	7
Scholarship Recipients by Provider	8
Federal Aid by Resident District	10
State Funding per Jon Peterson Scholarship Participants	10
Number of Years Enrolled in the Scholarship Program	11
Names and Addresses of Providers of Services	12
Appendix A. Number of Scholarship Students by Resident District	14
Appendix B. Total Scholarship Deductions by Resident District	34
Appendix C. Number of Scholarship Students by Provider	45
Appendix D. Federal Aid by Resident District	53
Appendix E. State Aid by Resident District	64
Appendix F. Full Year Program Enrollment by Resident District	74
Appendix G. Half-Year Program Enrollment by Resident District	86

General Information About the Program

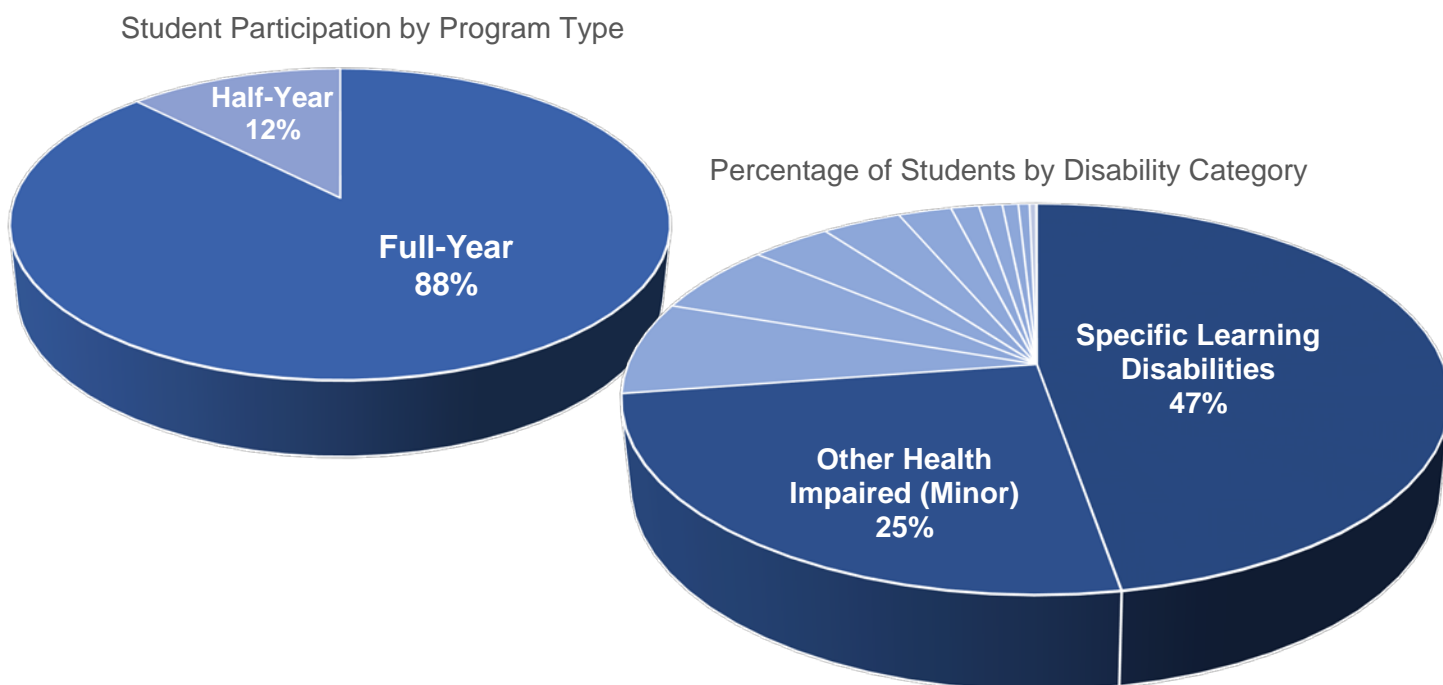
The Jon Peterson Special Needs Scholarship Program gives the parents of children with disabilities the choice to send their children to special education programs other than the ones operated by their school districts of residence. The goal is to provide families with options for their children to receive the education and services outlined in their individualized education programs (IEP).

Generally, there are two qualifications for the Jon Peterson Scholarship. First, the district has identified the student (kindergarten through grade 12) as a child with a disability. Identification means that the child's evaluation team report from the district states that the child required special education and related services under the Individuals with Disabilities Education Improvement Act of 2004 (IDEA). Second, the district has created an individualized education program for the child.

Student Participation

For the FY 2017 program period (2016-2017 school year), **4,887** students participated in the Jon Peterson Scholarship Program. There were 120 students who returned to a public-school district after participating in the scholarship program. Figure 1 shows that 88% of scholarship participants entered the full-year program and that 72% of all participants were students with specific learning disabilities and other health impairments (minor).

Figure 1. Participating students for FY 2017 by program and disability type



Resident Districts of Students

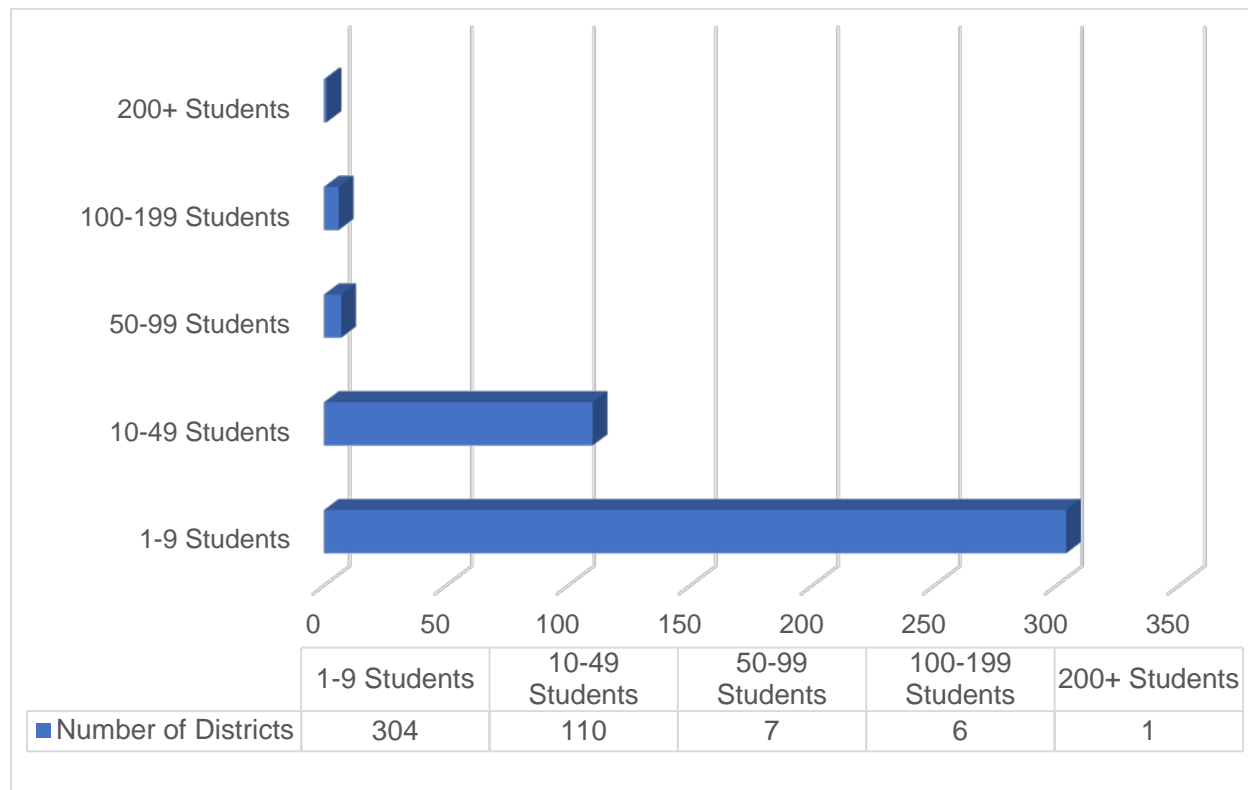
For the FY 2017 program period, there were **428** public school districts with students participating in the Jon Peterson Scholarship Program. The five districts with the highest number of participants are listed in Table 1. For the full list, see Appendix A.

Table 1. Top 5 FY 2017 resident districts by highest number of participating students

District	Number of Students
1. Cincinnati City	298
2. Cleveland Municipal	179
3. Cleveland Heights-University Heights City	159
4. Columbus City	148
5. Youngstown City	129

Data show that 71% of resident districts had less than ten students participate in the program (Figure 2).

Figure 2. FY 2017 Number of districts by number of participating students



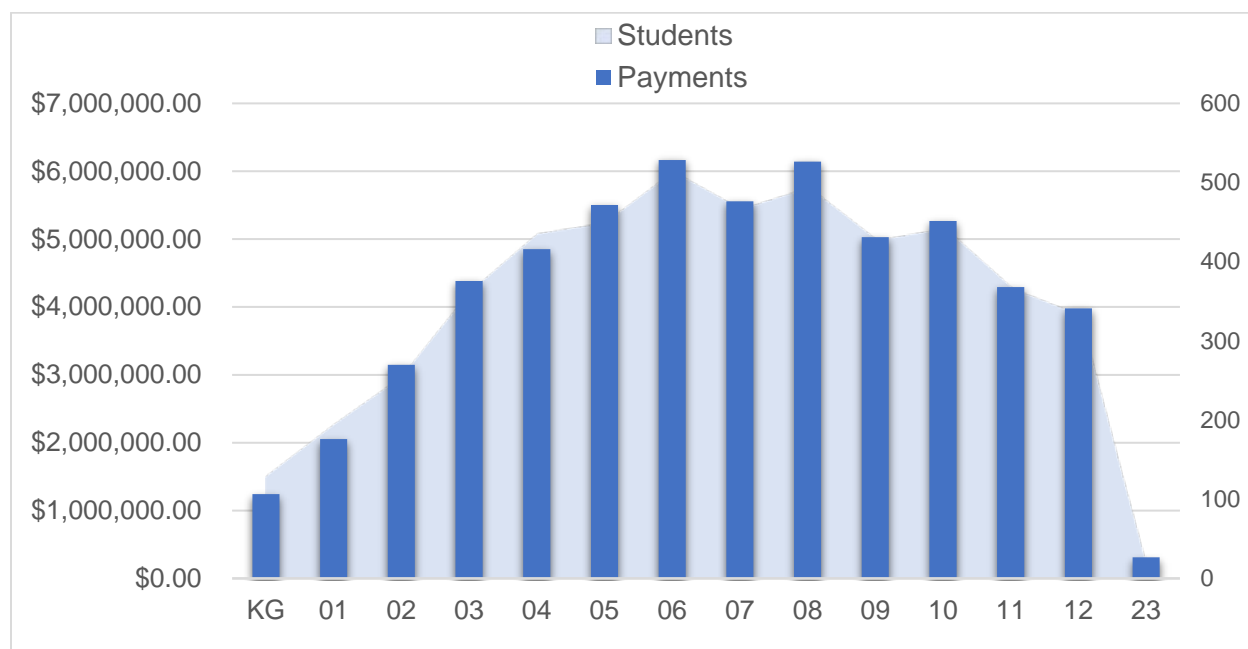
Scholarship Funds Disbursed Statewide by Grade

Students in grades kindergarten through twelfth grade are eligible to participate in the Jon Peterson Scholarship Program. Students that have not met graduation requirements but still need additional education services prior to enrollment in college or employment can continue to receive services as a grade 23 student. Table 2 contains the amount of funds disbursed statewide by grade. Scholarship payments by grade level are representative of participation by grade level (Figure 3).

Table 2. FY 2017 Jon Peterson scholarship payments by grade level

Grade	Payments
KG	\$1,243,188
01	\$2,054,631
02	\$3,146,942
03	\$4,383,926
04	\$4,852,496
05	\$5,503,216
06	\$6,165,537
07	\$5,556,680
08	\$6,140,775
09	\$5,027,859
10	\$5,266,771
11	\$4,292,884
12	\$3,979,382
23	\$310,876

Figure 3. FY 2017 Statewide scholarship payments and enrollment by grade level



Scholarship Funds Disbursed Statewide by Disability Category

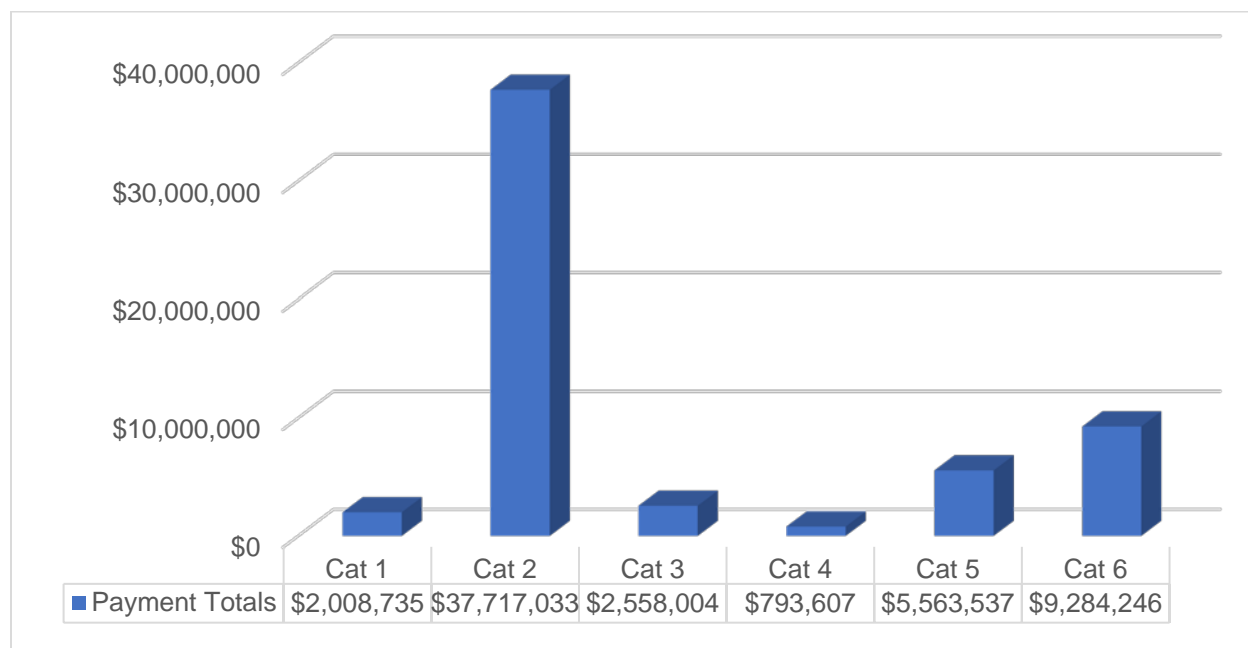
The basis of the amount of each scholarship is the primary disability identified on the student's IEP. The scholarship is the lesser of the fee/tuition chartered for the child by the special education program up to the maximum amount awarded based on the child's special education category. Maximum scholarship amounts for FY 2017 range from \$7,578 to \$27,000 per school year (Table 3).

Table 3. FY 2017 Special education categories and award amounts

Category	Primary Disability	Award Amount
1	Speech and Language Impairment	\$7,578
2	Specific Learning Disability, Intellectual Disability or OHI-minor	\$10,005
3	Hearing Impaired or Emotional Disturbance	\$15,622
4	Vision Impaired or OHI-major	\$18,841
5	Orthopedic Impairment or Multi-handicapped	\$23,390
6	Autism, Traumatic Brain Injury, or Hearing and Vision Impaired	\$27,000

Of the \$57.9 million in funds disbursed, 65% went to students in Category 2: Specific Learning Disability, Intellectual Disability or OHI-Minor (Figure 4).

Figure 4. FY 2017 Jon Peterson scholarship payments by funding category



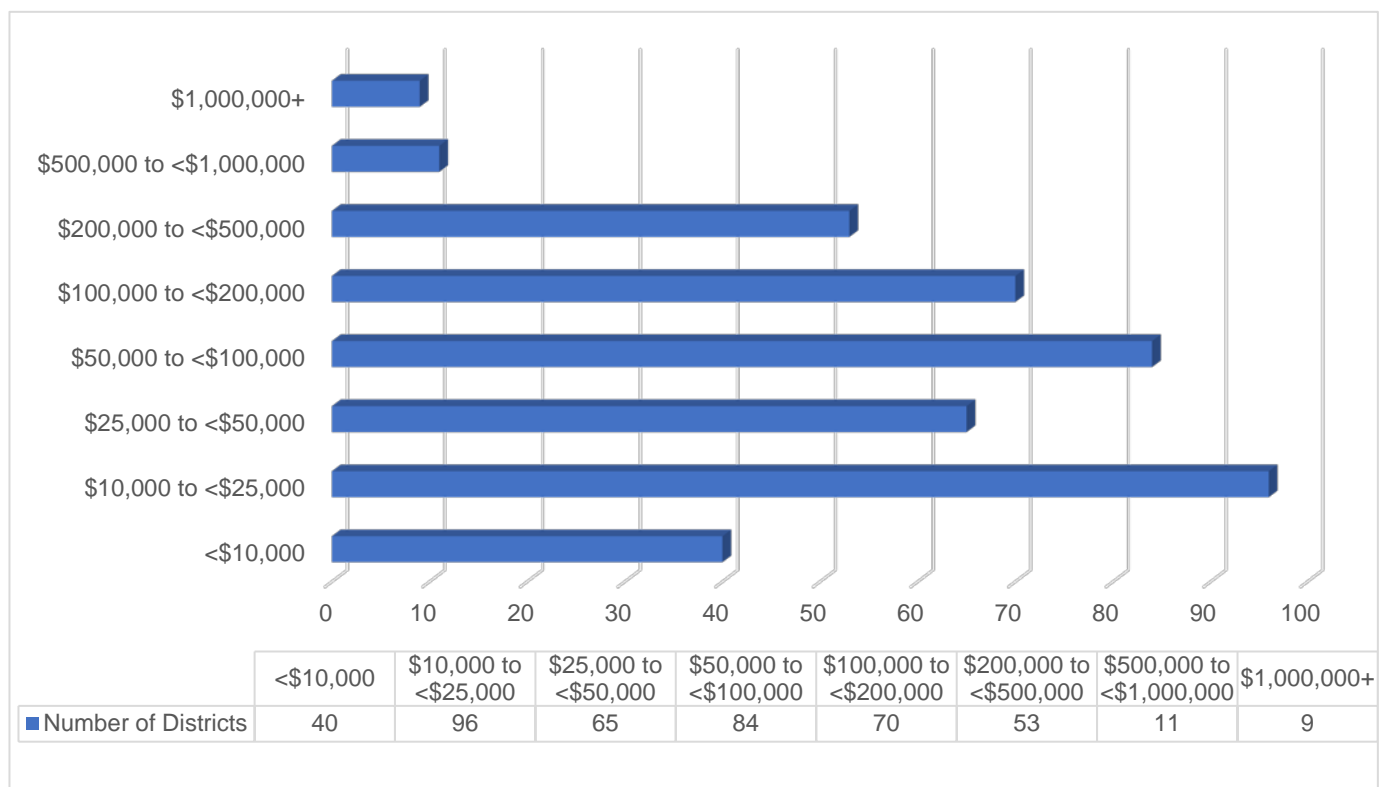
Scholarship Funds Disbursed Statewide by District

Scholarship payments are deducted from the district in which the student is entitled to attend (district of residence). The top five districts by scholarship fund deductions are listed in Table 4. The total amount deducted from a single district was less than \$100,000 for 67% of districts (Figure 5). For the full list of total payments by district, see Appendix B.

Table 4. Top 5 FY 2017 Jon Peterson scholarship deductions

Resident District	Total Payments
1. Cincinnati City	\$3,549,010.12
2. Cleveland Municipal	\$1,806,860.98
3. Cleveland Heights-University Heights City	\$1,745,691.79
4. Columbus City	\$1,696,094.29
5. Youngstown City	\$1,303,371.02

Figure 5. Number of districts by total FY 2017 scholarship payments



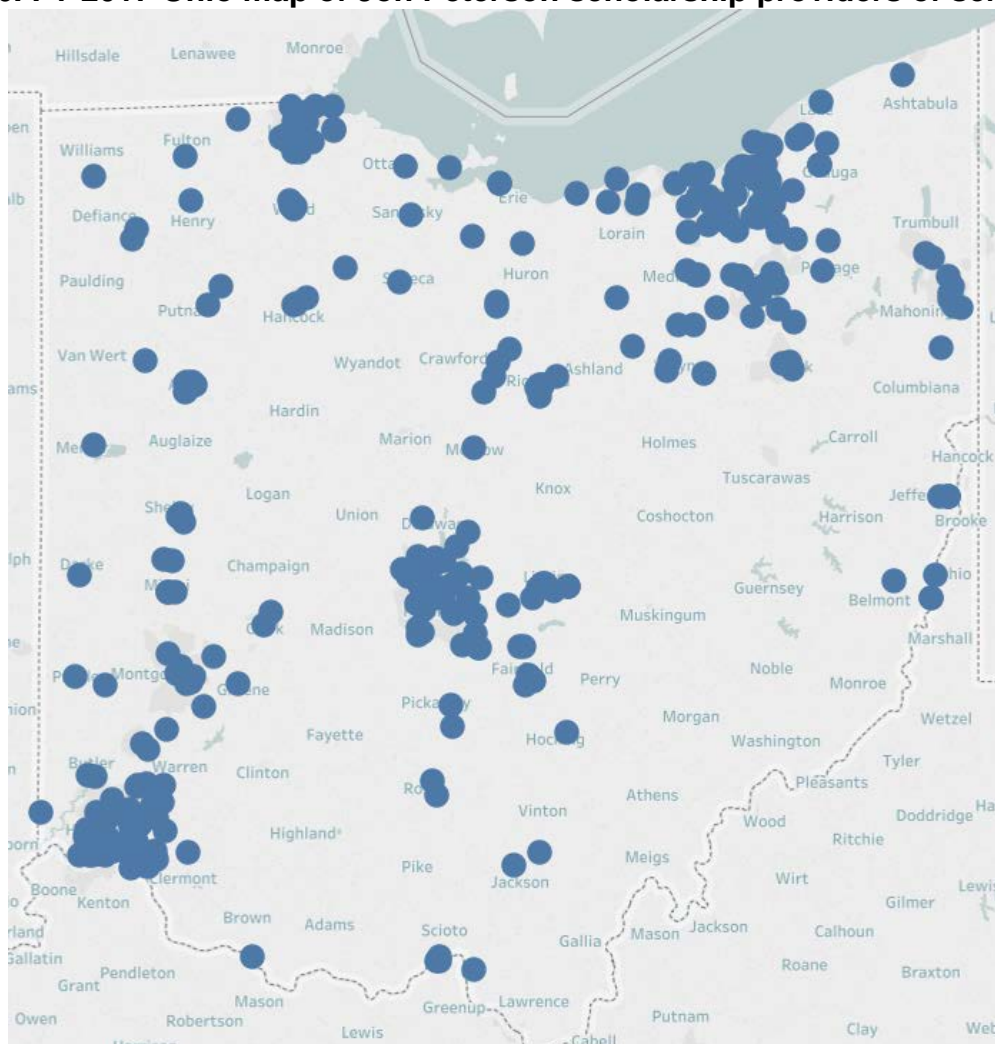
Scholarship Recipients by Provider

Parents of eligible students must register with a participating Jon Peterson Scholarship provider. Students may have multiple providers. Providers include public schools, nonpublic schools, independent businesses or self-employed individuals. Table 5 lists the top five counties by provider participation. The map in Figure 6 shows the location of providers throughout Ohio.

Table 5. Top 5 FY 2017 counties by number of Jon Peterson providers of services

County	Number of Providers
1. Cuyahoga	40
2. Hamilton	40
3. Franklin	31
4. Summit	18
5. Lucas	14

Figure 6. FY 2017 Ohio map of Jon Peterson scholarship providers of services

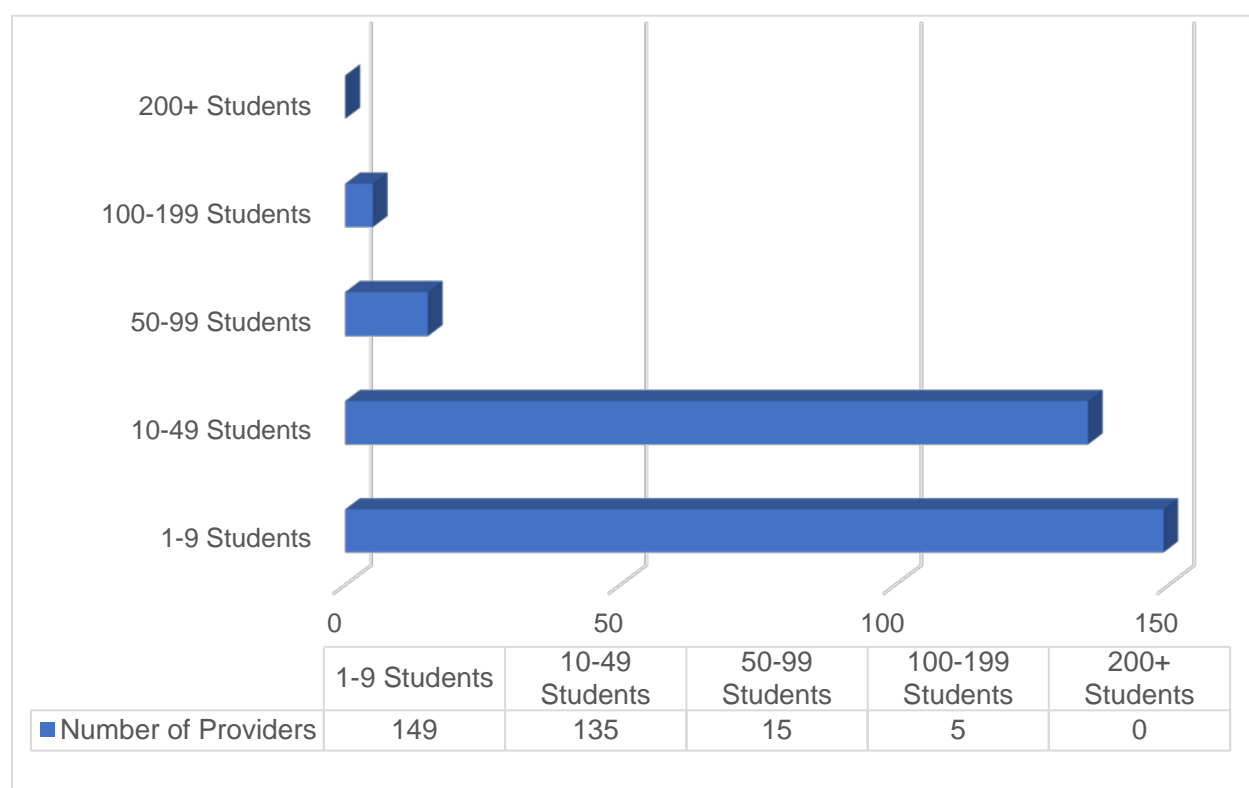


For the FY 2017 program period, there were **304** providers approved to participate in the Jon Peterson Scholarship Program. The five providers with the highest number of participants are listed in Table 6. Data show that 49% of providers had less than ten student participants (Figure 7). See Appendix C for a complete list of the number of participating scholarship students by provider.

Table 6. Top 5 FY 2017 providers by participating scholarship students

Provider	Number of Students
1. Marburn Academy	181
2. Lawrence School-Upper School Campus	167
3. PSI Associates/Affiliates	155
4. Springer School & Center	147
5. A+ Solutions	102

Figure 7. FY 2017 Number of providers by number of scholarship students



Federal Aid by Resident District

Federal funding is allocated to districts through the Comprehensive Continuous Improvement Plan (CCIP) application system. Federal aid allocations are not specific to Jon Peterson students since allocations are not based on a per-pupil calculation. The data in Table 7 represent the total allocation amounts for the top five districts received through IDEA Part B Special Education funding. For a complete list of districts and the amount of federal aid received, see Appendix D.

Table 7. Top 5 FY 2017 federal aid amounts received by districts

Resident District	Federal Aid Amount
1. Cleveland Municipal	\$14,254,162
2. Columbus City	\$12,731,725
3. Cincinnati City	\$10,126,569
4. Toledo City	\$6,745,162
5. Akron City	\$5,618,083

** Data are not filtered to include only Jon Peterson participants.*

State Funding per Jon Peterson Scholarship Participants

State funding generated through the foundation formula by students who participate in the Jon Peterson Scholarship Program in FY 2017. State funding totals include the following:

- Opportunity Grant
- K-3 Literacy Funding
- Special Education Additional Funding
- Gifted Education Funding
- Capacity Aid
- Guarantee Funding

The five districts which received the highest amount of state aid are in Table 8. For a complete list of districts and the amount of state aid received, see Appendix E.

Table 8. Top 5 FY 2017 state aid amounts received by districts

Resident District	State Aid Amount
1. Cincinnati City	\$1,531,490.85
2. Cleveland Municipal	\$1,443,010.49
3. Youngstown City	\$1,116,607.55
4. Toledo City	\$943,303.63
5. Columbus City	\$796,492.72

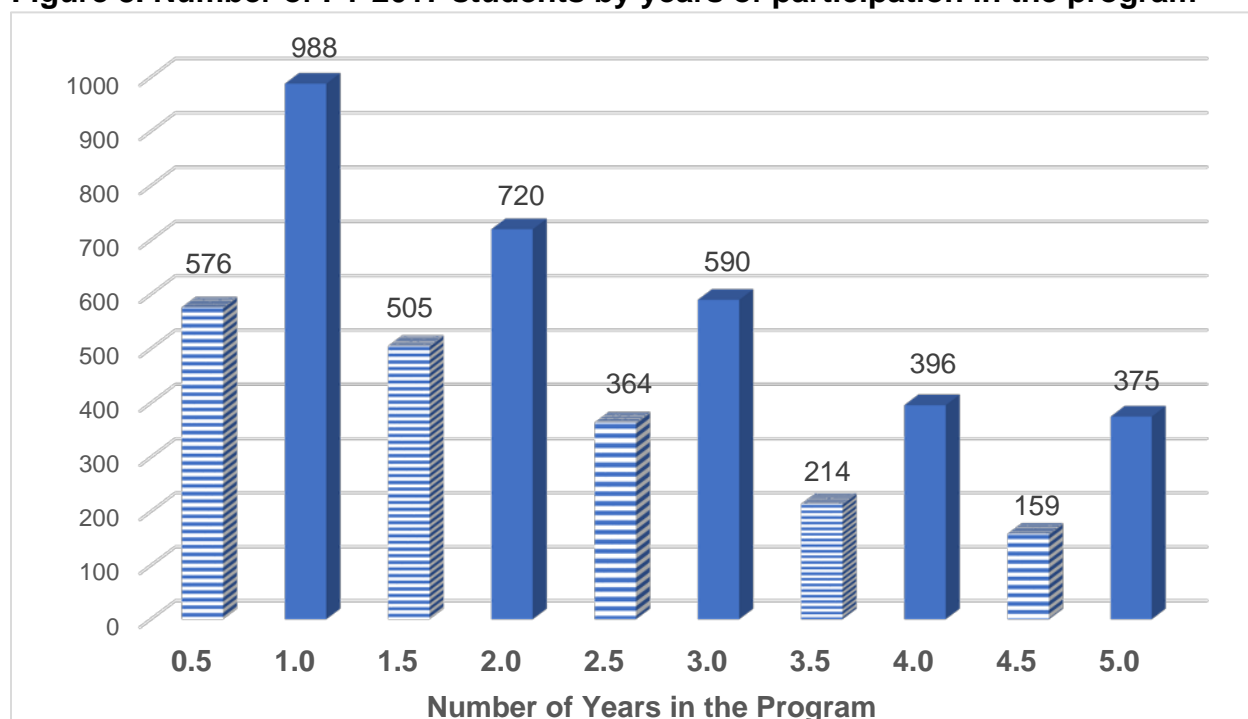
Number of Years Enrolled in the Scholarship Program

Since the inception of the scholarship program through FY 2017, the program has been in operation for five full-year and five half-year program periods. Data show that 32% of the 4,887 FY 2017 students were participating in the scholarship program for the first time as either a half year or full year student (Table 8 and Figure 8).

Table 8. Number and percentage of FY 2017 students by years of participation

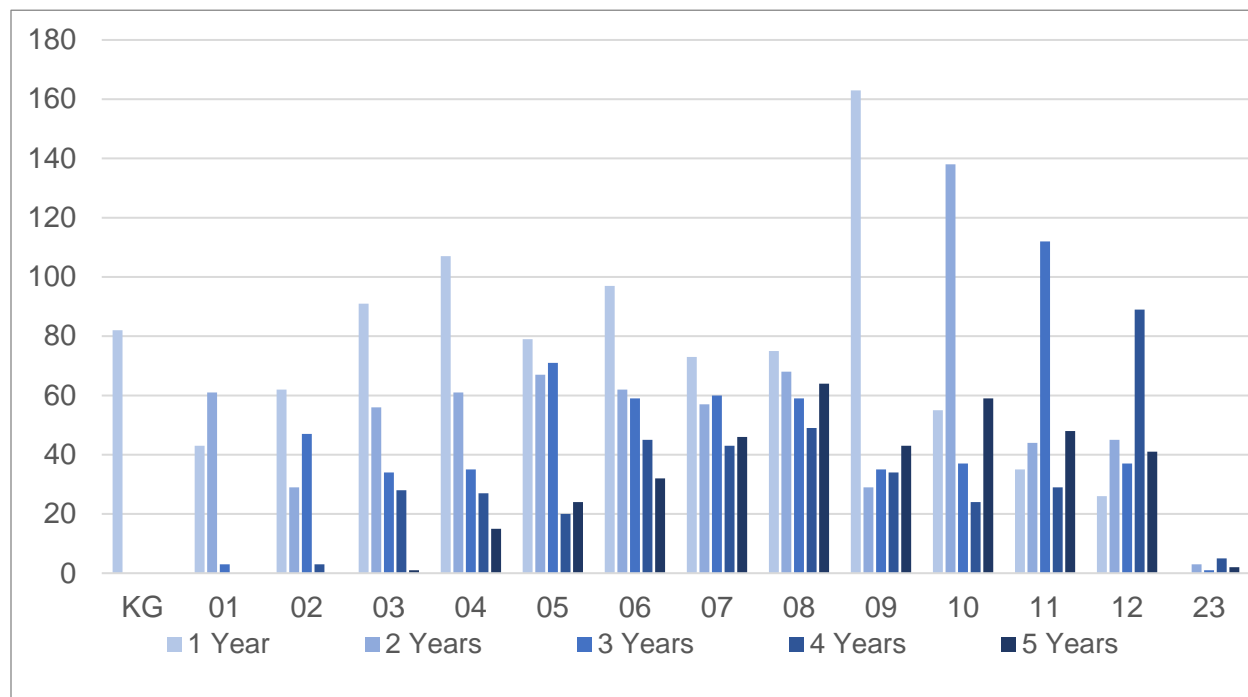
Years in Program	Number of Students	Percent of Total Students
0.5	576	12%
1.0	988	20%
1.5	505	10%
2.0	720	15%
2.5	364	7%
3.0	590	12%
3.5	214	4%
4.0	396	8%
4.5	159	3%
5.0	375	8%

Figure 8. Number of FY 2017 students by years of participation in the program



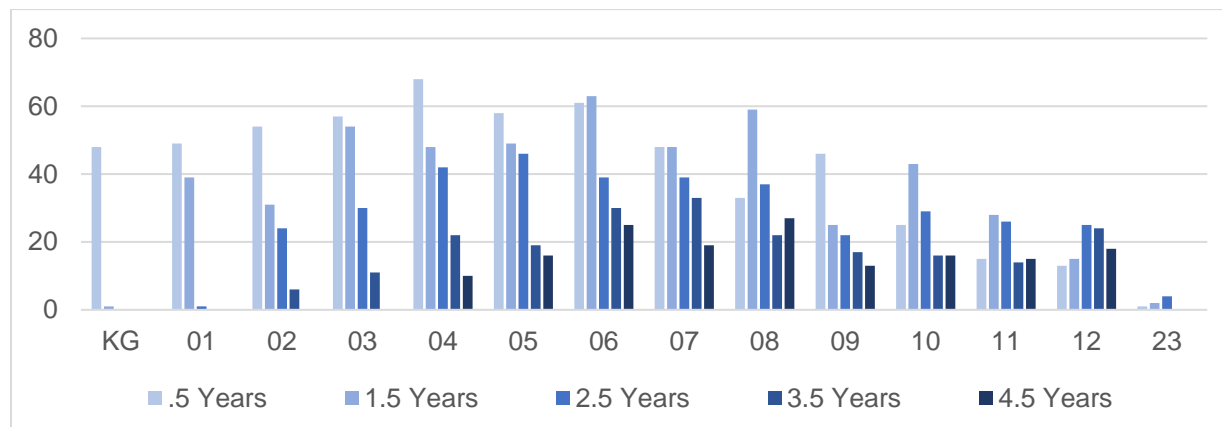
For district-level information on number of students by years in the program, see Appendix F (full-year participation) and Appendix G (half-year participation). Data in Figure 9 show a trend in high school participation. For FY 2017, there were high numbers of students participating for their first year in grade 9, followed by steadily declining numbers of students in their second year in grade 10, third year in grade 11, and fourth year in grade 12. Of students in 12th grade, 37% were students who entered the program in 9th grade and remained through 12th grade.

Figure 9. Number of FY 2017 students by full-year participation and grade level



Of the students participating in the half-year program this year, 83% were in Kindergarten through 8th grade (Figure 10).

Figure 10. Number of FY 2017 students by half-year participation and grade level



When examined by disability type and years of participation, students with specific learning disabilities in their second year of the program comprise the largest group of students (Figure 11). See Table 9 for values.

Figure 11. Number of FY 2017 students by years in the program and disability

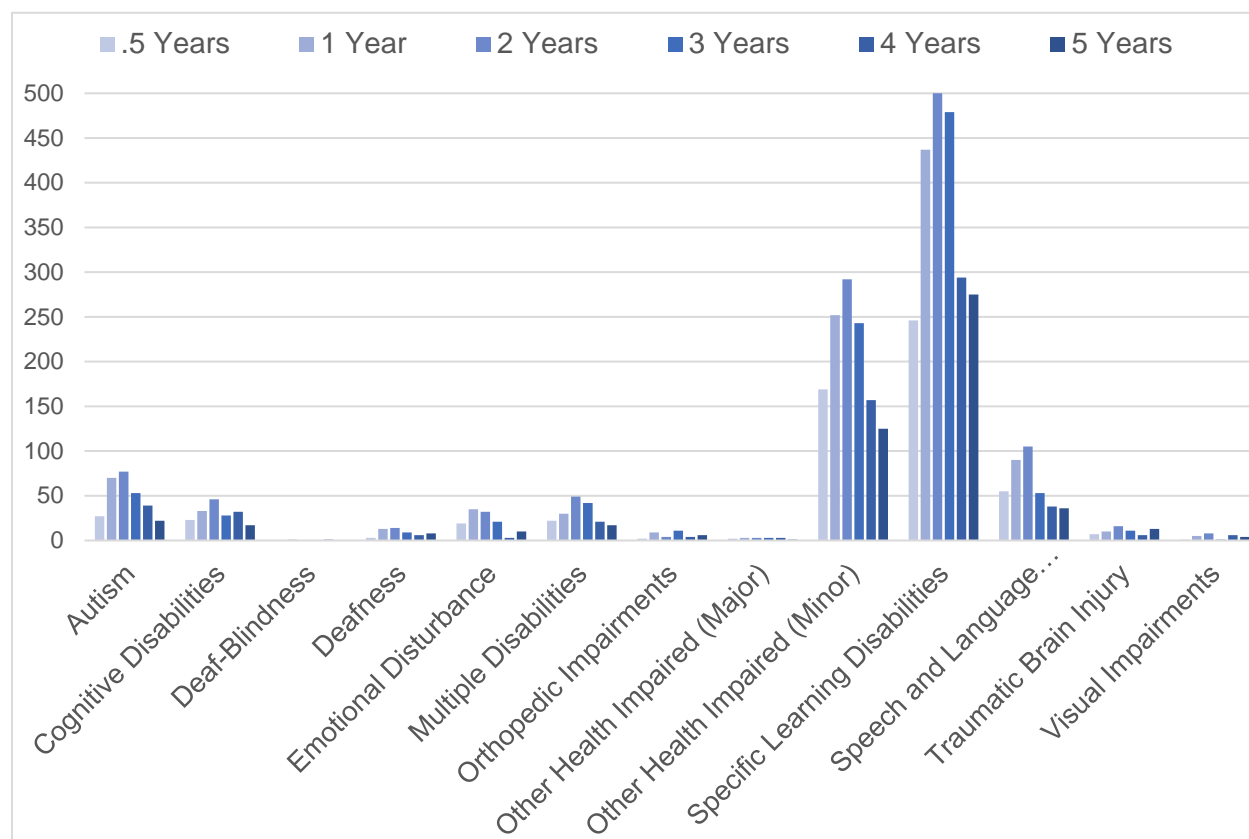


Table 9. Number of FY 2017 students by years in the program and disability type

Disability	.5 Yr	1 Yr	2 Yrs	3 Yrs	4 Yrs	5 Yrs
Autism	27	70	77	53	39	22
Cognitive Disabilities	23	33	46	28	32	17
Deaf-Blindness	0	<10	0	0	<10	0
Deafness	<10	13	14	<10	<10	<10
Emotional Disturbance	19	35	32	21	<10	10
Multiple Disabilities	22	30	49	42	21	17
Orthopedic Impairments	<10	<10	<10	11	<10	<10
Other Health Impaired (Major)	<10	<10	<10	<10	<10	<10
Other Health Impaired (Minor)	169	252	292	243	157	125
Specific Learning Disabilities	246	437	579	479	294	275
Speech and Language Impairments	55	90	105	53	38	36
Traumatic Brain Injury	<10	10	16	11	<10	13
Visual Impairments	<10	<10	<10	<10	<10	<10

**Previous half year participation rounded to the nearest full year.*

Names and Addresses of FY 2017 Providers of Services

County	Provider	Address
Allen	Lima Central Catholic	720 S Cable Rd, Lima, OH, 45805
Allen	St Charles	2175 W Elm St, Lima, OH, 45805
Allen	St Gerard	1311 N Main St, Lima, OH, 45801
Allen	St John Elementary and High School	515 E 2nd St, Delphos, OH, 45833
Allen	Sylvan Learning Center - Allen County	2357 Elida Road, Lima, OH, 45805
Allen	Temple Christian School	982 Brower Rd, Lima, OH, 45801
Allen	The Center for Autism and Dyslexia	2280 Baton Rouge, Lima, OH, 45805
Ashtabula	Saint John School	7911 Depot Rd, Ashtabula, OH, 44004
Belmont	St John	3625 Guernsey St, Bellaire, OH, 43906
Belmont	St John Central	3625 Guernsey St, Bellaire, OH, 43906
Belmont	St Mary	226 W Main St, Saint Clairsville, OH, 43950
Belmont	St Mary Central	24 N 4th St, Martins Ferry, OH, 43935
Brown	St Michael Consolidated	300 Market St, Ripley, OH, 45167
Butler	Applied Behavioral Services West Chester	7413 Squire Ct, West Chester, OH, 45069
Butler	Cincinnati Christian Schools	7350 Dixie Hwy, Fairfield, OH, 45014
Butler	Cincinnati Therapy Connections LLC	7091 Tarragon Ct., Liberty TWP, OH, 45011
Butler	Langsford Learning Acceleration Centers - West Chester	7616 Cox Lane, Cincinnati, OH, 45069
Butler	St Joseph	925 S 2nd St, Hamilton, OH, 45011
Butler	Stephen T Badin	571 New London Rd, Hamilton, OH, 45013
Clark	Emmanuel Christian Academy	2177 Emmanuel Way, Springfield, OH, 45502
Clark	Nightingale Montessori Inc	1106 E High St, Springfield, OH, 45505
Clermont	Bross Center for Learning and Achievement	4435 Aicholtz Rd suite 100, Cincinnati, OH, 45245
Clermont	Kid Power Therapy Services, Inc.	5989 Meijer Drive, Suite #4, Milford, OH, 45150
Clermont	Ohio Valley Voices	6642 Branch Hill Guinea Pike, Loveland, OH, 45140
Clermont	Rebecca Granger	570 Williamsburg Ct, Cincinnati, OH, 45244
Clermont	St Louis	250 N Broadway St, Owensville, OH, 45160
Clermont	St Veronica	4475 Mount Carmel Tobasco Rd, Cincinnati, OH, 45244
Columbiana	Heartland Christian School	28 Pittsburgh St, Columbiana, OH, 44408
Coshocton	Acacia Center, Inc	1100 Fairy Falls Dr. Unit 10, Coshocton, OH, 43812
Crawford	St Joseph	138 N Liberty St, Galion, OH, 44833
Crawford	St Joseph	333 N Thoman St, Crestline, OH, 44827
Cuyahoga	A+ Solutions	3659 Green Road Suite 112, Beachwood, OH, 44122
Cuyahoga	Academy of St Adalbert	56 Adelbert St, Berea, OH, 44017
Cuyahoga	Advanced Therapy Solutions LLC	14077 Cedar Rd, Ste LL6 A&C, South Euclid, OH, 44121
Cuyahoga	Beaumont School	3301 N Park Blvd, Cleveland Heights, OH, 44118

County	Provider	Address
Cuyahoga	Cleveland Central Catholic	6550 Baxter Ave, Cleveland, OH, 44105
Cuyahoga	Cleveland Clinic Children's Hospital for Rehabilitation	2801 Martin Luther King Jr Dr, Cleveland, OH, 44104
Cuyahoga	Cleveland Sight Center	1909 E 101st St, Cleveland, OH, 44106
Cuyahoga	Climbing Ladders Speech-Language Therapy	20330 Colleen Ct, Strongsville, OH, 44149
Cuyahoga	Education Alternative-Bedford	270 Union St, Bedford, OH, 44146
Cuyahoga	F.I.T. (Friendship In Team)	19910 Malvern Rd, Shaker Heights, OH, 44122
Cuyahoga	Fuchs Mizrahi Of Cleveland	26600 Shaker Blvd, Beachwood, OH, 44122
Cuyahoga	Hanna Perkins	19910 Malvern Rd, Shaker Heights, OH, 44122
Cuyahoga	Harrison Center for Children	19800 Detroit Rd, Rocky River, OH, 44116
Cuyahoga	Hebrew Academy Of Cleveland	1860 S Taylor Rd, Cleveland Heights, OH, 44118
Cuyahoga	Insight Learning and Wellness Center, llc	25901 Emery Road, Suit 112, Cleveland, OH, 44128
Cuyahoga	Jay H. Berk, Ph.D.	23293 Commerce Park, Beachwood, OH, 44122
Cuyahoga	Julie Billiart	4982 Clubside Rd, Lyndhurst, OH, 44124
Cuyahoga	Lawrence School	1551 E Wallings Rd, Broadview Heights, OH, 44147
Cuyahoga	Learning Advantage Services, LLC	1534 S Green Rd, South Euclid, OH, 44121
Cuyahoga	Music Therapy Enrichment Center, Inc.	26121 Center Ridge Rd, Westlake, OH, 44145
Cuyahoga	Nicole Gerami, LLC	23825 Commerce Park Ste B, Beachwood, OH, 44122
Cuyahoga	North Coast Tutoring Services	31300 Solon Rd Ste 1, Solon, OH, 44139
Cuyahoga	Padua Franciscan	6740 State Rd, Parma, OH, 44134
Cuyahoga	Rising Star Learning Center	140 Richmond Rd, Euclid, OH, 44143
Cuyahoga	Saint Bridget of Kildare School	5620 Hauserman Rd, Parma, OH, 44130
Cuyahoga	SEGULA	2030 S. Taylor Rd., Cleveland Heights, OH, 44118
Cuyahoga	South Suburban Montessori	4450 Oakes Rd Bldg 6, Brecksville, OH, 44141
Cuyahoga	St Adalbert	2345 E 83rd St, Cleveland, OH, 44104
Cuyahoga	St Albert The Great	6667 Wallings Rd, North Royalton, OH, 44133
Cuyahoga	St Columbkille	6740 Broadview Rd, Parma, OH, 44134
Cuyahoga	St Dominic	3455 Norwood Rd, Shaker Heights, OH, 44122
Cuyahoga	St Edward	13500 Detroit Ave, Lakewood, OH, 44107
Cuyahoga	St. Andre Scholars	13500 Detroit Ave, Lakewood, OH, 44107
Cuyahoga	Stefanie Peck, M.A. CCC-SLP	30325 Bainbridge Rd Ste 5A, Solon, OH, 44139
Cuyahoga	The Center for Lifeskills	30325 Bainbridge Rd Ste 5A, Solon, OH, 44139
Cuyahoga	The Galvin Therapy Center/Barrie G. Galvin, OTR/L & Associat	25221 Miles Road Ste F, Warrensville Heights, OH, 44128
Cuyahoga	Therapy and Wellness Connection	10010 Brecksville Rd, Brecksville, OH, 44141
Cuyahoga	Tree of Knowledge Learning Centers	1855 S Taylor Rd, Cleveland Heights, OH, 44118

County	Provider	Address
Cuyahoga	Villa Angela-St Joseph	18491 Lake Shore Blvd, Cleveland, OH, 44119
Cuyahoga	Vision Development Team	10139 Royalton Rd Ste D, North Royalton, OH, 44133
Darke	Decolores Montessori School	312 Central Ave, Greenville, OH, 45331
Defiance	Holy Cross Catholic School of Defiance	1745 S Clinton St, Defiance, OH, 43512
Defiance	Sylvan Learning Center - Defiance County	1018 Ralston Avenue, Ste. 110, Defiance, OH, 43512
Delaware	Genoa Christian Academy	7562 Lewis Center Rd, Westerville, OH, 43082
Delaware	Pediatric Therapy Partners, LLC	640 Enterprise Drive, Suite C, Lewis Center, OH, 43035
Delaware	Specialized Speech Technologies, Inc.	8740 Orion Pl Ste 110, Columbus, OH, 43240
Delaware	St Mary	66 E William St, Delaware, OH, 43015
Delaware	The Learning Spectrum Sunbury	36 Harrison St Suite D, Sunbury, OH, 43074
Erie	Sandusky Central Catholic School	410 W Jefferson St, Sandusky, OH, 44870
Erie	St Mary	5450 E Ohio St, Vermilion, OH, 44089
Fairfield	Haugland Learning Center Lancaster	1522 Sheridan Dr, Lancaster, OH, 43130
Fairfield	Navigating Autism	1818 1/2 Basil Western Rd, Baltimore, OH, 43105
Fairfield	Patricia L. Closson	110 N. Walnut St., Baltimore, OH, 43105
Fairfield	St Bernadette	1325 Wheeling Rd NE, Lancaster, OH, 43130
Fairfield	St Mary	309 E Chestnut St, Lancaster, OH, 43130
Fairfield	The Learning Spectrum Canal Winchester	122 Washington St Suite 401, Canal Winchester, OH, 43110
Fairfield	Wm V Fisher Catholic	1803 Granville Pike, Lancaster, OH, 43130
Franklin	ADHD CoachConnect LLC	1555 Bethel Rd, Columbus, OH, 43220
Franklin	Bishop Watterson	99 E Cooke Rd, Columbus, OH, 43214
Franklin	Capital Therapy Services	69 W Waterloo St, Canal Winchester, OH, 43110
Franklin	Central College Christian Academy	975 S Sunbury Rd, Westerville, OH, 43081
Franklin	Columbus Therapy Associates, LLC	1335 Dublin Rd Ste 200B, Columbus, OH, 43215
Franklin	Columbus Tutoring Services, LLC	146 S Merkle Rd, Columbus, OH, 43209
Franklin	Flourish Integrated Therapy, LLC	30 Northwoods Blvd, Columbus, OH, 43235
Franklin	Food for Good Thought, Inc.	4185 North High Street, Columbus, OH, 43214
Franklin	Harvest Preparatory School	4595 Gender Rd, Canal Winchester, OH, 43110
Franklin	Haugland Learning Center LLC	2540 Billingsley Rd, Columbus, OH, 43235
Franklin	Haugland Learning Center-Dublin	7690 New Market Center Way, Columbus, OH, 43235
Franklin	Helping Hands Center dba Bridgeway Academy	2500 Medary Ave, Columbus, OH, 43202
Franklin	Highland Community Learning Center	5120 Godown Rd, Columbus, OH, 43220
Franklin	Laura Faye Clubok	215 S. Stanwood Road, Bexley, OH, 43209

County	Provider	Address
Franklin	Learning Spectrum, LTD	125 Dillmont Drive, Columbus, OH, 43235
Franklin	Lianne Russell	3403 Brook Spring Dr., Grove City, OH, 43123
Franklin	Lisa Tiberi-Ruth	557 Beaverbrook Dr., Gahanna, OH, 43230
Franklin	Marburn Academy	9555 Johnstown Rd, New Albany, OH, 43054
Franklin	New Spring Special Education Services, LLC	30 Northwoods Blvd Suite 100, Columbus, OH, 43235
Franklin	Northrup and Associates	6422 E. Main Street, Reynoldsburg, OH, 43068
Franklin	Our Lady Of Perpetual Help	3752 Broadway, Grove City, OH, 43123
Franklin	Reach Educational Services	3254 Henderson Rd, Columbus, OH, 43220
Franklin	St Andrew	4081 Reed Rd, Columbus, OH, 43220
Franklin	St Brendan	4475 Dublin Rd, Hilliard, OH, 43026
Franklin	St Brigid Of Kildare	7175 Avery Rd, Dublin, OH, 43017
Franklin	St Catharine	2865 Fair Ave, Columbus, OH, 43209
Franklin	St Francis De Sales	4212 Karl Rd, Columbus, OH, 43224
Franklin	St James The Less	1628 Oakland Park Ave, Columbus, OH, 43224
Franklin	St Matthew	795 Havens Corners Rd, Gahanna, OH, 43230
Franklin	The Disability Resource Network, Inc.	525 Main St., Groveport, OH, 43125
Franklin	The Fleming Learning Center, LLC	3291 Blodwen Circle, Grove City, OH, 43123
Fulton	Holy Trinity, Assumption	2639 Us Highway 20, Swanton, OH, 43558
Fulton	New Horizons Academy at Sara's Garden	220 Lawrence Avenue, Wauseon, OH, 43567
Geauga	Home Tutoring Solutions	539 East Washington Street, Chagrin Falls, OH, 44022
Geauga	Notre Dame School	13000 Auburn Rd, Chardon, OH, 44024
Geauga	Notre Dame-Cathedral Latin	13000 Auburn Rd, Chardon, OH, 44024
Geauga	Western Reserve Speech and Language Partners-Geauga, LLC	100 7th Ave Ste 255, Chardon, OH, 44024
Greene	Building Blocks to a Brighter Future, LLC	1040 Constitution Dr, Xenia, OH, 45385
Greene	Miami Valley Tutoring Services, Ltd.	919 S Central Ave, Fairborn, OH, 45324
Hamilton	Academic Tutoring, LLC	9200 Montgomery Rd Bldg E, Cincinnati, OH, 45242
Hamilton	All Saints	8939 Montgomery Rd, Cincinnati, OH, 45236
Hamilton	Applied Behavioral Services	4850 Madison Rd, Cincinnati, OH, 45227
Hamilton	Brain Balance Achievement Center	12084 Montgomery Rd, Cincinnati, OH, 45249
Hamilton	Central Montessori Academy	1904 Springdale Rd, Cincinnati, OH, 45231
Hamilton	Cincinnati Center for Improved Communication, Inc.	3814 West Street, Suite 321, Cincinnati, OH, 45227
Hamilton	Cincinnati Center for Improved Communication, Inc.	4440 Carver Woods Dr Ste 100, Blue Ash, OH, 45242
Hamilton	Immaculate Heart Of Mary	7800 Beechmont Ave, Cincinnati, OH, 45255

County	Provider	Address
Hamilton	John Paul II Catholic School	9375 Winton Rd, Cincinnati, OH, 45231
Hamilton	Langsford Learning Acceleration Centers - Blue Ash	9402 Towne Square Avenue, Suite B, Cincinnati, OH, 45242
Hamilton	Lasalle	3091 N Bend Rd, Cincinnati, OH, 45239
Hamilton	Linden Grove School	4122 Myrtle Ave, Cincinnati, OH, 45236
Hamilton	McAuley High School	6000 Oakwood Ave, Cincinnati, OH, 45224
Hamilton	Mercy Montessori Center	2335 Grandview Ave, Cincinnati, OH, 45206
Hamilton	Mother Of Mercy High School	3036 Werk Rd, Cincinnati, OH, 45211
Hamilton	Music Therapy Services	8447 Beechmont Avenue, Cincinnati, OH, 45255
Hamilton	Our Lady Of Victory	808 Neeb Rd, Cincinnati, OH, 45233
Hamilton	Powers Educational Services	3443 Edwards Road, Cincinnati, OH, 45208
Hamilton	Purcell-Marian	2935 Hackberry St, Cincinnati, OH, 45206
Hamilton	Roger Bacon	4320 Vine St, Cincinnati, OH, 45217
Hamilton	S.M.I.L.E.S. Integrative Therapy Services, LLC	1120 Cottonwood Dr Ste 4, Loveland, OH, 45140
Hamilton	Seton	3901 Glenway Ave, Cincinnati, OH, 45205
Hamilton	Skyward Academy	9994 Zig Zag Road, Montgomery, OH, 45242
Hamilton	Skyward New Hope	3707 Edgewood Drive, Cincinnati, OH, 45211
Hamilton	Springer School & Center	2121 Madison Rd, Cincinnati, OH, 45208
Hamilton	St Cecilia	4115 Taylor Ave, Cincinnati, OH, 45209
Hamilton	St Clement	4534 Vine St, Cincinnati, OH, 45217
Hamilton	St Francis Seraph	14 E Liberty St, Cincinnati, OH, 45202
Hamilton	St Ignatius Loyola	5222 N Bend Rd, Cincinnati, OH, 45247
Hamilton	St James	6111 Cheviot Rd, Cincinnati, OH, 45247
Hamilton	St John The Baptist	508 Park Ave, Harrison, OH, 45030
Hamilton	St Lawrence	1020 Carson Ave, Cincinnati, OH, 45205
Hamilton	St Michael	11136 Oak St, Sharonville, OH, 45241
Hamilton	St Rita School for the Deaf	1720 Glendale Milford Rd, Cincinnati, OH, 45215
Hamilton	St Teresa Of Avila	1194 Rulison Ave, Cincinnati, OH, 45238
Hamilton	St Ursula Academy	1339 E Mcmillan St, Cincinnati, OH, 45206
Hamilton	St Vincent Ferrer	7754 Montgomery Rd, Cincinnati, OH, 45236
Hamilton	St William	4125 Saint William Ave, Cincinnati, OH, 45205
Hamilton	The Childrens Home of Cincinnati	5050 Madison Rd, Cincinnati, OH, 45227
Hamilton	The Good Shepherd Catholic Montessori	4460 Berwick St, Cincinnati, OH, 45227
Hancock	Ms. Donna's Adaptive Learning Center	317 W Lima Street, Findlay, OH, 45840
Hancock	St Wendelin Catholic School	533 N Countyline St, Fostoria, OH, 44830
Hancock	Sylvan Learning Center - Hancock County	Market Square Plaza, 1781 Tiffin Avenue, Findlay, OH, 45840
Hancock	The Center for Autism and Dyslexia Findlay	7430 Timberstone Dr, Findlay, OH, 45840
Henry	St Augustine	722 Monroe St, Napoleon, OH, 43545

County	Provider	Address
Hocking	St John	321 N Market St, Logan, OH, 43138
Huron	Celeryville Christian	4200 Broadway Rd, Willard, OH, 44890
Huron	Immaculate Conception	304 E Main St, Bellevue, OH, 44811
Huron	Norwalk Catholic School	93 E Main St, Norwalk, OH, 44857
Huron	St Francis Xavier	25 W Perry St, Willard, OH, 44890
Jackson	Christian Life Academy	10595 Chillicothe Pike, Jackson, OH, 45640
Jackson	Sts Peter And Paul	229 S New York Ave, Wellston, OH, 45692
Jefferson	Bishop John King Mussio Central Elementary - Rosemont Campus	100 Etta Ave, Steubenville, OH, 43952
Jefferson	Bishop John King Mussio Central Junior High School	320 Westview Ave Ste 2, Steubenville, OH, 43952
Jefferson	Catholic Central	320 Westview Ave, Steubenville, OH, 43952
Lake	Kinderspeech	10449 Misty Ridge Drive, Painesville, OH 44077
Lake	Tri-County Intervention and Tutoring Services, LLC	9223 Amber Wood Dr., Kirtland, OH, 44094
Licking	Acacia Center	130 N Prospect St Ste A & B, Granville, OH, 43023
Licking	Blue Horizon Consulting, LLC	44 Whipkey Drive, Granville, OH, 43023
Licking	Jon R. Lindsey	394 South High Street, Pataskala, OH, 43062
Licking	Kairos Academy	50 S 2nd St, Newark, OH, 43055
Licking	The Learning Spectrum Newark	1935 Tamarack Rd, Newark, OH, 43055
Licking	The Nest	50 S 2nd St, Newark, OH, 43055
Licking	Welsh Hills School	2610 Newark Granville Rd, Granville, OH, 43023
Lorain	Spectrum Resource Center and School	300 Broadway, Lorain, OH, 44052
Lorain	St Jude	594 Poplar St, Elyria, OH, 44035
Lucas	Blessed Sacrament	4255 Bellevue Rd, Toledo, OH, 43613
Lucas	Cardinal Stritch Catholic High School & Academy	3225 Pickle Rd, Oregon, OH, 43616
Lucas	Emmanuel Christian School	4607 W Laskey Rd, Toledo, OH, 43623
Lucas	Huntington Learning Center	6638 Centers Drive, Holland, OH, 43528
Lucas	Our Lady Of Perpetual Help	2255 Central Grv, Toledo, OH, 43614
Lucas	Regina Coeli	600 Regina Pkwy, Toledo, OH, 43612
Lucas	Sensational Kids Daycare & Learning Center, LLC	6060 Merger Drive, Holland, OH, 43528
Lucas	St Francis De Sales School	2323 W Bancroft St, Toledo, OH, 43607
Lucas	St Joan Of Arc	5950 Heatherdowns Blvd, Toledo, OH, 43614
Lucas	St John's Jesuit	5901 Airport Hwy, Toledo, OH, 43615
Lucas	St Joseph	112 W Broadway St, Maumee, OH, 43537
Lucas	Sylvan Learning Center - Lucas County	7131 Spring Meadows W Dr Ste E, Holland, OH, 43528
Lucas	The Self Reliance Autism Center	4730 W Bancroft St Ste 13, Toledo, OH, 43615
Lucas	Toledo Islamic Academy	5225 Alexis Rd, Sylvania, OH, 43560
Mahoning	ACL D Learning Center	118 E. Wood St., Youngstown, OH, 44503
Mahoning	Akiva Academy	505 Gypsy Ln, Youngstown, OH, 44504

County	Provider	Address
Mahoning	Cardinal Mooney	2545 Erie St, Youngstown, OH, 44507
Mahoning	Holy Family	2731 Center Rd, Poland, OH, 44514
Mahoning	Knapp Center for Childhood Development, LLC	950 Windham Court, Suite 4, Boardman, OH, 44512
Mahoning	Potential Development/Autism	2400 Market St, Youngstown, OH, 44507
Mahoning	Valley Christian School	4401 Southern Blvd, Youngstown, OH, 44512
Medina	Black River Local	257A County Road 40, Sullivan, OH, 44880
Medina	Fun 2 Be Me Developmental Therapy	3355 Medina Road, Medina, OH, 44256
Medina	Medina Christian Academy	3646 Medina Rd, Medina, OH, 44256
Medina	Sacred Heart Of Jesus	110 Humbolt Ave, Wadsworth, OH, 44281
Medina	Therapy in Motion, LLC	1046 N Jefferson St, Medina, OH, 44256
Mercer	Immaculate Conception	200 W Wayne St, Celina, OH, 45822
Miami	Nicholas School	1306 Garbry Rd, Piqua, OH, 45356
Miami	Piqua Catholic Elementary	503 W North St, Piqua, OH, 45356
Miami	St Patrick	420 E Water St, Troy, OH, 45373
Miami	Troy Christian Elementary School	700 South Dorset Rd, Troy, OH, 45373
Miami	Troy Christian High School	700 S Dorset Rd, Troy, OH, 45373
Montgomery	Ascension	2001 Woodman Dr, Kettering, OH, 45420
Montgomery	Carroll	4524 Linden Ave, Dayton, OH, 45432
Montgomery	Chaminade-Julienne	505 S Ludlow St, Dayton, OH, 45402
Montgomery	Gloria Dei Montessori	615 Shiloh Dr, Dayton, OH, 45415
Montgomery	Immaculate Conception	2268 S Smithville Rd, Dayton, OH, 45420
Montgomery	Our Lady Of Rosary	40 Notre Dame Ave, Dayton, OH, 45404
Morrow	Gilead Christian	220 S Main St, Mount Gilead, OH, 43338
Ottawa	Immaculate Conception	109 W 4th St, Port Clinton, OH, 43452
Ottawa	St Boniface	215 W Oak St, Oak Harbor, OH, 43449
Pickaway	Crossroads Christian Academy	5679 Tarlton Rd, Circleville, OH, 43113
Pickaway	New Hope Christian Academy	2264 Walnut Creek Pike, Circleville, OH, 43113
Portage	Education Alternative-Ravenna	310 Bennett Ave, Ravenna, OH, 44266
Portage	KidsLink Neurobehavioral Center	899 Frost Rd, Streetsboro, OH, 44241
Portage	Musical Fingers, LLC	9679 PECK ROAD, MANTUA, OH, 44255
Preble	Terri's Teaching and Tutoring	2602 Twin Creek Rd, West Alexandria, OH, 45381
Preble	Triangle Therapy Services, LLC	911 West Main Street, Eaton, OH, 45320
Putnam	St Mary	129 Saint Marys St, Leipsic, OH, 45856
Putnam	Sylvan Learning Center - Putnam County	124 Putnam Pkwy Ste A, Ottawa, OH, 45875
Richland	Christina M. Guisbert PT for Kids, LLC	462 Park Avenue West, Mansfield, OH, 44906
Richland	Discovery	855 Millsboro Rd, Mansfield, OH, 44903
Richland	Mansfield Christian School	500 Logan Rd, Mansfield, OH, 44907

County	Provider	Address
Richland	Sacred Heart	5754 State Route 61 S, Shelby, OH, 44875
Richland	St Mary	26 West St, Shelby, OH, 44875
Richland	St Mary Catholic School	1630 Ashland Rd, Mansfield, OH, 44905
Richland	St Peter	63 S Mulberry St, Mansfield, OH, 44902
Richland	St Peter High School and Junior High School	104 W First St, Mansfield, OH, 44902
Ross	Bishop Flaget	570 Parsons Ave, Chillicothe, OH, 45601
Ross	Ross County Christian Academy	2215 Egypt Pike, Chillicothe, OH, 45601
Sandusky	Bishop Hoffman Catholic, St Joseph Central Catholic HS	702 Croghan St, Fremont, OH, 43420
Scioto	Notre Dame	1401 Gallia St, Portsmouth, OH, 45662
Scioto	Notre Dame Jr/Sr	2220 Sunrise Ave, Portsmouth, OH, 45662
Scioto	Portsmouth Stem Academy	614 Third Street, Portsmouth, OH, 45662
Scioto	Tessa Bobst	141 Possum Hollow Rd, Wheelersburg, OH, 45694
Seneca	Calvert Catholic Schools	152 Madison St, Tiffin, OH, 44883
Shelby	Christian Academy Schools	2151 W Russell Rd, Sidney, OH, 45365
Shelby	Holy Angels	120 E Water St, Sidney, OH, 45365
Shelby	Lehman High School	2400 Saint Marys Rd, Sidney, OH, 45365
Stark	Brain Balance Achievement Center - Canton	4207 Hills and Dales Rd NW, Canton, OH, 44708
Stark	Canton Montessori	125 15th St NW, Canton, OH, 44703
Stark	Lake Center Christian School	12893 Kaufman Ave NW, Hartville, OH, 44632
Stark	New Dimensions, Inc.	1815 37th Street, N.W., Canton, OH, 44709
Stark	The Golden Key Center for Exceptional Children	1431 30th St NW, Canton, OH, 44709
Stark	The Golden Key Center for Exceptional Children	1431 30th Street Northwest, Canton, OH, 44709
Summit	Club Z! In-Home Tutoring Service - Akron	526 S Main St Ste 223, Akron, OH, 44311
Summit	Cornerstone Community Education Alternative-Cuyahoga Falls	90 W Overdale Dr, Tallmadge, OH, 44278
Summit	Emmanuel Christian Academy	1225 Orlen Ave, Cuyahoga, OH, 44221
Summit	Lawrence School-Upper School Campus	350 S Portage Path, Akron, OH, 44320
Summit	LearningRx Akron/Bath dba Buie Cognitive Development	10036 Olde 8 Rd, Northfield, OH, 44067
Summit	LLA Therapy - Akron	150 Springside Drive, Akron, OH, 44333
Summit	McKeon Education Group, Inc.	150 N. Miller Road, Bldg. 150A, Akron, OH, 44333
Summit	Out of the Box Behavioral Solutions LLC	656 Continental Drive, Sagamore Hills, OH, 44067
Summit	Peak Potential Therapy	1011 Gorge Blvd, Akron, OH, 44310
Summit	PSI Associates/Affiliates	8848 Commons Blvd, Twinsburg, OH, 44087
Summit		2112 Case Parkway S, #10, Twinsburg, OH, 44087

County	Provider	Address
Summit	S.U.P.E.R. Learning Center's Faith Christian Academy	1584 Wilson Avenue, Lakemore, OH, 44250
Summit	St Francis De Sales	4009 Manchester Rd, Akron, OH, 44319
Summit	St Hilary	645 Moorfield Rd, Fairlawn, OH, 44333
Summit	St Vincent De Paul	17 S Maple St, Akron, OH, 44303
Summit	St Vincent St Mary	15 N Maple St, Akron, OH, 44303
Summit	Total Education Solutions	3428 W Market St, Fairlawn, OH, 44333
Trumbull	Aaris Therapy Group, Inc.	950 Youngstown Warren Rd Ste A, Niles, OH, 44446
Warren	Middletown Christian	3011 N Union Rd, Middletown, OH, 45005
Warren	Rita Cevasco & Associates	5055 Clovercrest Court, Mason, OH, 45040
Warren	Schaefer Education Solutions	5252 Riverwalk Drive, Kings Mills, OH, 45034
Warren	Skyward Learning Services	2033 Walnut St, Loveland, OH, 45140
Wayne	Bair Herman Enterprise, Inc., dba EJ Therapy Services	210 E Milltown Rd Ste A, Wooster, OH, 44691
Wayne	Judit Kiss	8171 Rittman Ave, Sterling, OH, 44276
Wayne	Kingsway Christian	11138 Old Lincoln Way E, Orrville, OH, 44667
Wayne	Northwestern Local	7571 N Elyria Rd, West Salem, OH, 44287
Wayne	Norwayne Local	350 S Main St, Creston, OH, 44217
Wayne	Wooster Christian	4599B Burbank Rd, Wooster, OH, 44691
Wood	All Saints Catholic	630 Lime City Rd, Rossford, OH, 43460
Wood	Bowling Green Christian Academy	1165 Haskins Rd, Bowling Green, OH, 43402
Wood	Montessori School of Bowling Green	515 Sand Ridge Rd, Bowling Green, OH, 43402
Wood	St Aloysius	148 S Enterprise St, Bowling Green, OH, 43402
Wood	St Rose	217 E Front St, Perrysburg, OH, 43551
Wood	Sylvan Learning Center - Wood County	1039 Haskins Road, Ste. D, Bowling Green, OH, 43402
Wood	Wood County Hospital: Ready Program	950 W. Wooster St., Bowling Green, OH, 43402

Appendix A. Number of FY 2017 Scholarship Students by Resident District

IRN	Resident District	Number of Students
043752	Cincinnati City	298
043786	Cleveland Municipal	179
043794	Cleveland Heights-University Heights City	159
043802	Columbus City School District	148
045161	Youngstown City	129
047365	Northwest Local	109
047373	Oak Hills Local	100
043489	Akron City	97
044909	Toledo City	93
044636	Parma City	66
043844	Dayton City	59
045047	Westerville City	54
046110	Lakota Local	52
044297	Mansfield City	52
047340	Forest Hills Local	48
046763	Olentangy Local	48
044453	Newark City	45
046961	Gahanna-Jefferson City	43
044784	Sidney City	42
047019	Hilliard City	41
045104	Willoughby-Eastlake City	41
043513	Ashtabula Area City	38
043554	Beachwood City	38
044081	Winton Woods City	36
044016	Fremont City	35
044800	South-Western City	34
047381	Southwest Local	34
044107	Hamilton City	30
044891	Tiffin City	30
044750	Shaker Heights City	29
044792	South Euclid-Lyndhurst City	29
047225	West Geauga Local	29
045138	Worthington City	29
047894	Riverside Local	28
046102	Fairfield City	27
044644	Piqua City	27

IRN	Resident District	Number of Students
044818	Springfield City School District	27
044842	Strongsville City	27
043877	Delaware City	26
044545	North Royalton City	26
044875	Sylvania Schools	26
047027	Dublin City	25
043638	Bowling Green City School District	24
044370	Mayfield City	24
046995	New Albany-Plain Local	24
046607	Solon City	24
043950	Euclid City	23
045500	Milford Exempted Village	23
044743	Sandusky City	23
044867	Sycamore Community City	23
043943	Elyria City Schools	22
044222	Lima City	22
048728	Northmont City	22
044974	Wadsworth City	22
046359	West Clermont Local	22
047191	Kenston Local	21
044271	Loveland City	21
045492	Mentor Exempted Village	21
050047	Nordonia Hills City	21
046581	Orange City	21
044669	Portsmouth City	21
044719	St Bernard-Elmwood Place City	21
047183	Chardon Local	20
046896	Pickerington Local	20
044925	Troy City	20
044933	Upper Arlington City	20
048306	Boardman Local	19
045773	Elida Local	19
050013	Green Local	19
045583	Perrysburg Exempted Village	19
047241	Beavercreek City	18
048314	Canfield Local	18
043885	Delphos City	18
048496	Highland Local	18

IRN	Resident District	Number of Students
048348	Poland Local	18
049650	Washington-Nile Local	18
045641	Wauseon Exempted Village	18
045062	Westlake City	18
043612	Berea City	17
045286	Chagrin Falls Exempted Village	17
045393	Granville Exempted Village	17
044677	Princeton City	17
047332	Finneytown Local	16
046755	Buckeye Valley Local	15
044776	Shelby City	15
048223	Springfield Local	15
043646	Brecksville-Broadview Heights City	14
043836	Cuyahoga Falls City	14
049866	Lake Local	14
044198	Lakewood City	14
044206	Lancaster City	14
050450	Mason City	14
044388	Medina City SD	14
044412	Mt Healthy City	14
050070	Twinsburg City	14
048298	Austintown Local Schools	13
048488	Cloverleaf Local	13
047803	Indian Creek Local	13
049437	Lexington Local	13
044503	North Canton City	13
044537	North Ridgeville City	13
048041	Southwest Licking Local	13
044834	Stow-Munroe Falls City School District	13
043992	Fostoria City	12
049791	Hardin-Houston Local	12
050062	Springfield Local	12
047399	Three Rivers Local	12
045120	Wooster City	12
048207	Anthony Wayne Local	11
047878	Kirtland Local	11
044263	Lorain City	11
044578	Norwood City	11

IRN	Resident District	Number of Students
045799	Shawnee Local	11
048231	Washington Local	11
045021	Wellston City	11
043596	Bellevue City	10
046748	Big Walnut Local	10
043711	Canton City	10
049197	Field Local	10
044362	Maumee City	10
044651	Port Clinton City	10
046821	Vermilion Local	10
045088	Wickliffe City	10
045096	Willard City	10
043620	Bexley City	<10
049999	Coventry Local	<10
048009	Licking Heights Local	<10
050443	Little Miami Local	<10
044289	Madeira City	<10
048033	Northridge Local	<10
050054	Revere Local	<10
043539	Barberton City	<10
043562	Bedford City	<10
048926	Benton Carroll Salem Local	<10
047787	Buckeye Local	<10
047175	Cardinal Local	<10
046326	Clermont Northeastern Local	<10
047050	Evergreen Local	<10
046979	Groveport Madison Local	<10
050021	Hudson City	<10
049858	Jackson Local	<10
047993	Lakewood Local	<10
044511	North College Hill City	<10
044602	Oregon City	<10
044826	Steubenville City	<10
044883	Tallmadge City	<10
049544	Zane Trace Local	<10
048116	Avon Local	<10
043547	Bay Village City	<10
048462	Black River Local	<10

IRN	Resident District	Number of Students
043729	Celina City	<10
049981	Copley-Fairlawn City	<10
045344	Crestline Exempted Village	<10
044040	Garfield Heights City Schools	<10
044057	Geneva Area City	<10
045435	Indian Hill Exempted Village	<10
044156	Jackson City	<10
044214	Lebanon City	<10
044305	Maple Heights City	<10
046805	Margaretta Local	<10
049882	Marlington Local	<10
139303	Monroe Local	<10
045559	New Richmond Exempted Village	<10
048025	North Fork Local	<10
049932	Plain Local	<10
046144	Ross Local	<10
044859	Struthers City	<10
044958	Vandalia-Butler City	<10
045005	Warrensville Heights City	<10
046060	Western Brown Local	<10
045146	Wyoming City	<10
048124	Avon Lake City	<10
047167	Berkshire Local	<10
048470	Buckeye Local	<10
043745	Chillicothe City	<10
043869	Defiance City	<10
043968	Fairborn City	<10
043984	Findlay City	<10
044024	Galion City	<10
044099	Greenville City	<10
044180	Kettering City School District	<10
049452	Madison Local	<10
044420	Mount Vernon City	<10
047217	Newbury Local	<10
046250	Northeastern Local	<10
049635	Northwest Local	<10
050567	Norwayne Local	<10
046813	Perkins Local	<10

IRN	Resident District	Number of Students
044693	Reading Community City	<10
047001	Reynoldsburg City	<10
044701	Rocky River City	<10
045179	Zanesville City	<10
045195	Amherst Exempted Village	<10
049171	Aurora City	<10
043901	East Cleveland City School District	<10
047795	Edison Local	<10
046342	Goshen Local	<10
049700	Hopewell-Loudon Local	<10
045427	Hubbard Exempted Village	<10
050435	Kings Local	<10
050195	Liberty Local	<10
050005	Manchester Local	<10
049627	Minford Local	<10
045534	Mount Gilead Exempted Village	<10
045567	Newton Falls Exempted Village	<10
049908	Northwest Local	<10
044552	Norton City	<10
049478	Ontario Local	<10
047084	Pike-Delta-York Local	<10
045609	Rossford Exempted Village	<10
046151	Talawanda City	<10
045617	Tipp City Exempted Village	<10
048876	Tri-Valley Local	<10
049536	Union-Scioto Local	<10
045625	Upper Sandusky Exempted Village	<10
044941	Urbana City	<10
049973	Woodridge Local	<10
045153	Xenia Community City	<10
043505	Ashland City	<10
046300	Batavia Local	<10
045765	Bath Local	<10
048611	Bethel Local	<10
046946	Canal Winchester Local	<10
050542	Dalton Local	<10
049122	Eastern Local School District	<10
050682	Elmwood Local	<10

IRN	Resident District	Number of Students
048801	Highland Local	<10
046565	Independence Local	<10
044164	Kent City	<10
049080	Logan Elm Local	<10
048702	Mad River Local	<10
044347	Martins Ferry City	<10
044438	Napoleon Area City	<10
049056	Northern Local	<10
044560	Norwalk City	<10
046573	Olmsted Falls City	<10
044610	Orrville City	<10
050724	Otsego Local	<10
046599	Richmond Heights Local	<10
044735	Salem City	<10
050427	Springboro Community City	<10
048371	Springfield Local	<10
049247	Waterloo Local	<10
049668	Wheelersburg Local	<10
046847	Amanda-Clearcreek Local	<10
043570	Bellaire Local	<10
043661	Brunswick City	<10
048793	Cardington-Lincoln Local	<10
047829	Centerburg Local	<10
050534	Chippewa Local	<10
046284	Clark-Shawnee Local	<10
045328	Columbiana Exempted Village	<10
043851	Deer Park Community City	<10
047688	East Holmes Local	<10
048942	Genoa Area Local	<10
044065	Girard City School District	<10
050559	Green Local	<10
044115	Heath City	<10
048686	Jefferson Township Local	<10
048017	Licking Valley Local	<10
047886	Madison Local	<10
044313	Mariemont City	<10
047456	McComb Local	<10
048173	Midview Local	<10

IRN	Resident District	Number of Students
044479	New Lexington School District	<10
046722	Northeastern Local	<10
048819	Northmor Local	<10
044628	Painesville City Local	<10
044685	Ravenna City	<10
046003	Shadyside Local	<10
050583	Southeast Local	<10
050658	Stryker Local	<10
049098	Teays Valley Local	<10
044917	Toronto City	<10
050393	Vinton County Local	<10
048389	West Branch Local	<10
049577	Woodmore Local	<10
047415	Arcadia Local	<10
046854	Berne Union Local	<10
045856	Buckeye Local	<10
043687	Bucyrus City	<10
043703	Campbell City	<10
043760	Circleville City	<10
043778	Claymont City	<10
043810	Conneaut Area City	<10
048835	East Muskingum Local	<10
050674	Eastwood Local	<10
045369	Fairport Harbor Exempted Village	<10
043976	Fairview Park City	<10
044008	Franklin City	<10
045377	Georgetown Exempted Village	<10
046193	Graham Local	<10
046235	Greenon Local	<10
046953	Hamilton Local	<10
047571	Holgate Local	<10
048751	Huber Heights City	<10
048322	Jackson-Milton Local	<10
049205	James A Garfield Local	<10
048165	Keystone Local	<10
047589	Liberty Center Local	<10
046888	Liberty Union-Thurston Local	<10
044248	Logan-Hocking Local	<10

IRN	Resident District	Number of Students
050203	Lordstown Local	<10
045476	Marysville Exempted Village	<10
044396	Miamisburg City	<10
045518	Milton-Union Exempted Village	<10
050039	Mogadore Local	<10
050740	Mohawk Local	<10
046136	New Miami Local	<10
050708	North Baltimore Local	<10
044529	North Olmsted City	<10
049379	Ottawa-Glandorf Local	<10
049395	Pandora-Gilboa Local	<10
045781	Perry Local	<10
045880	Pymatuning Valley Local	<10
046474	Ridgewood Local	<10
046078	Ripley-Union-Lewis-Huntington Local	<10
045591	Rittman Exempted Village	<10
046482	River View Local	<10
047514	Riverdale Local	<10
048363	South Range Local	<10
046276	Southeastern Local	<10
049239	Streetsboro City	<10
047092	Swanton Local	<10
046243	Tecumseh Local	<10
050591	Triway Local	<10
048694	Trotwood-Madison City	<10
045054	West Carrollton City	<10
047696	West Holmes Local	<10
045070	Whitehall City	<10
046367	Williamsburg Local	<10
061903	Adams County Ohio Valley Local	<10
049494	Adena Local	<10
045906	Alexander Local	<10
043497	Alliance City	<10
046425	Beaver Local	<10
048074	Benjamin Logan Local	<10
046862	Bloom-Carroll Local	<10
045229	Bradford Exempted Village	<10
050112	Bristol Local	<10

IRN	Resident District	Number of Students
043653	Brooklyn City	<10
046508	Buckeye Central Local	<10
049833	Canton Local	<10
045278	Carrollton Exempted Village	<10
050138	Champion Local	<10
049601	Clay Local	<10
049411	Clear Fork Valley Local	<10
048132	Clearview Local	<10
046391	Clinton-Massie Local	<10
045302	Clyde-Green Springs Exempted Village	<10
048140	Columbia Local	<10
045336	Covington Exempted Village	<10
049429	Crestview Local	<10
046557	Cuyahoga Heights Local	<10
048934	Danbury Local	<10
043893	Dover City	<10
047845	East Knox Local	<10
046037	Eastern Local	<10
043935	Eaton Community City	<10
046094	Edgewood City	<10
050328	Fairbanks Local	<10
046870	Fairfield Union Local	<10
049775	Fairlawn Local	<10
049841	Fairless Local	<10
047068	Fayette Local	<10
046045	Fayetteville-Perry Local	<10
046334	Felicity-Franklin Local	<10
048157	Firelands Local	<10
049783	Fort Loramie Local	<10
048595	Fort Recovery Local	<10
048843	Franklin Local	<10
047852	Fredericktown Local	<10
044073	Grandview Heights Schools	<10
049619	Green Local	<10
047266	Greeneview Local	<10
045823	Hillsdale Local	<10
044131	Huron City Schools	<10
050286	Indian Valley Local	<10

IRN	Resident District	Number of Students
045872	Jefferson Area Local	<10
048256	Jefferson Local	<10
050245	LaBrae Local	<10
050690	Lake Local	<10
049353	Leipsic Local	<10
050369	Lincolnview Local	<10
045450	Lisbon Exempted Village	<10
045468	Loudonville-Perrysville Exempted Village	<10
049874	Louisville City	<10
048330	Lowellville Local	<10
049445	Lucas Local	<10
048272	Madison-Plains Local	<10
050153	Mathews Local	<10
048850	Maysville Local	<10
048520	Meigs Local	<10
048629	Miami East Local	<10
050633	Millcreek-West Unity Local	<10
045955	New Bremen Local	<10
044495	Niles City	<10
048736	Northridge Local	<10
050575	Northwestern Local	<10
047761	Oak Hill Union Local	<10
049726	Old Fort Local	<10
048215	Ottawa Hills Local	<10
049510	Paint Valley Local	<10
047597	Patrick Henry Local	<10
045575	Paulding Exempted Village	<10
047902	Perry Local	<10
049924	Perry Local	<10
047076	Pettisville Local	<10
048421	Pleasant Local	<10
049213	Rootstown Local	<10
044768	Sheffield-Sheffield Lake City	<10
049528	Southeastern Local	<10
050237	Southington Local	<10
045997	St Clairsville-Richland City	<10
048587	St Henry Consolidated Local	<10
048652	Switzerland of Ohio Local	<10

IRN	Resident District	Number of Students
091397	Tri-County North Local	<10
046201	Triad Local	<10
046458	United Local	<10
049643	Valley Local	<10
044982	Wapakoneta City	<10
050252	Weathersfield Local	<10
045658	Wellington Exempted Village	<10
046219	West Liberty-Salem Local	<10
048884	West Muskingum Local	<10
049106	Westfall Local	<10
045112	Wilmington City	<10
045674	Yellow Springs Exempted Village	<10

Appendix B. Total FY 2017 Scholarship Deductions by Resident District

IRN	Resident District	Total Payment/Deduction
043752	Cincinnati City	\$3,549,010
043786	Cleveland Municipal	\$1,806,861
043794	Cleveland Heights-University Heights City	\$1,745,692
043802	Columbus City School District	\$1,696,094
045161	Youngstown City	\$1,303,371
047373	Oak Hills Local	\$1,249,387
043489	Akron City	\$1,151,723
047365	Northwest Local	\$1,101,649
044909	Toledo City	\$1,049,309
044636	Parma City	\$715,989
043877	Delaware City	\$688,296
046110	Lakota Local	\$649,952
046763	Olentangy Local	\$648,300
043844	Dayton City	\$626,441
047019	Hilliard City	\$588,482
045104	Willoughby-Eastlake City	\$550,342
044297	Mansfield City	\$549,597
045047	Westerville City	\$535,668
047340	Forest Hills Local	\$534,022
046961	Gahanna-Jefferson City	\$518,644
045641	Wauseon Exempted Village	\$499,410
043513	Ashtabula Area City	\$499,373

IRN	Resident District	Total Payment/Deduction
044453	Newark City	\$468,618
047027	Dublin City	\$461,846
045138	Worthington City	\$435,384
044784	Sidney City	\$425,648
043554	Beachwood City	\$423,883
044644	Piqua City	\$422,033
047381	Southwest Local	\$394,203
044107	Hamilton City	\$392,255
048306	Boardman Local	\$358,651
043943	Elyria City Schools	\$357,403
046755	Buckeye Valley Local	\$353,878
044081	Winton Woods City	\$351,824
048728	Northmont City	\$346,789
044891	Tiffin City	\$341,990
046102	Fairfield City	\$328,916
044974	Wadsworth City	\$327,539
044800	South-Western City	\$327,422
045773	Elida Local	\$325,910
044750	Shaker Heights City	\$320,858
044933	Upper Arlington City	\$319,640
048348	Poland Local	\$316,502
044792	South Euclid-Lyndhurst City	\$311,007
047225	West Geauga Local	\$310,947
044818	Springfield City School District	\$310,360
044263	Lorain City	\$307,255
046995	New Albany-Plain Local	\$306,422
044222	Lima City	\$306,081
044867	Sycamore Community City	\$303,644
044875	Sylvania Schools	\$291,206
046581	Orange City	\$270,590
044669	Portsmouth City	\$268,777
043950	Euclid City	\$261,157
043638	Bowling Green City School District	\$259,817
044842	Strongsville City	\$256,644
048223	Springfield Local	\$250,495
046607	Solon City	\$249,325
044370	Mayfield City	\$245,643
049437	Lexington Local	\$242,018
044271	Loveland City	\$239,107
048496	Highland Local	\$237,831

IRN	Resident District	Total Payment/Deduction
044545	North Royalton City	\$236,597
050047	Nordonia Hills City	\$216,398
045583	Perrysburg Exempted Village	\$216,149
044016	Fremont City	\$214,744
045500	Milford Exempted Village	\$214,486
047803	Indian Creek Local	\$214,431
047084	Pike-Delta-York Local	\$203,894
044206	Lancaster City	\$202,474
044743	Sandusky City	\$201,618
049650	Washington-Nile Local	\$201,515
045062	Westlake City	\$200,734
046342	Goshen Local	\$197,527
045393	Granville Exempted Village	\$195,821
045492	Mentor Exempted Village	\$195,817
046359	West Clermont Local	\$193,907
047332	Finneytown Local	\$191,612
044925	Troy City	\$190,483
048231	Washington Local	\$189,791
047191	Kenston Local	\$189,019
047183	Chardon Local	\$188,498
048298	Austintown Local Schools	\$187,745
043836	Cuyahoga Falls City	\$183,599
044198	Lakewood City	\$181,707
047241	Beavercreek City	\$180,090
049866	Lake Local	\$179,843
044677	Princeton City	\$176,010
044776	Shelby City	\$175,993
044388	Medina City SD	\$175,744
045286	Chagrin Falls Exempted Village	\$175,593
045120	Wooster City	\$175,462
048009	Licking Heights Local	\$173,695
050443	Little Miami Local	\$172,580
050013	Green Local	\$171,446
044834	Stow-Munroe Falls City School District	\$169,217
047993	Lakewood Local	\$168,412
044719	St Bernard-Elmwood Place City	\$167,519
043646	Brecksville-Broadview Heights City	\$163,674
047894	Riverside Local	\$162,164
044503	North Canton City	\$159,752
044578	Norwood City	\$159,688

IRN	Resident District	Total Payment/Deduction
045021	Wellston City	\$153,989
048314	Canfield Local	\$152,965
043885	Delphos City	\$152,810
046144	Ross Local	\$152,585
045088	Wickliffe City	\$151,310
043612	Berea City	\$150,274
044537	North Ridgeville City	\$148,992
050062	Springfield Local	\$148,439
046300	Batavia Local	\$147,546
044305	Maple Heights City	\$141,094
048207	Anthony Wayne Local	\$133,437
044412	Mt Healthy City	\$132,488
050450	Mason City	\$131,770
044602	Oregon City	\$130,047
050070	Twinsburg City	\$128,432
048488	Cloverleaf Local	\$128,186
046243	Tecumseh Local	\$126,955
049197	Field Local	\$121,542
048041	Southwest Licking Local	\$121,290
043711	Canton City	\$120,606
047787	Buckeye Local	\$119,696
044859	Struthers City	\$119,478
045799	Shawnee Local	\$118,861
139303	Monroe Local	\$118,476
044511	North College Hill City	\$117,045
049544	Zane Trace Local	\$116,254
046896	Pickerington Local	\$115,555
043620	Bexley City	\$114,604
046250	Northeastern Local	\$113,634
049791	Hardin-Houston Local	\$112,785
047399	Three Rivers Local	\$111,687
049858	Jackson Local	\$109,699
046060	Western Brown Local	\$109,286
047878	Kirtland Local	\$108,490
046326	Clermont Northeastern Local	\$107,307
048033	Northridge Local	\$106,749
043562	Bedford City	\$105,645
044289	Madeira City	\$101,987
043547	Bay Village City	\$101,807
050658	Stryker Local	\$100,780

IRN	Resident District	Total Payment/Deduction
043992	Fostoria City	\$100,174
046821	Vermilion Local	\$99,787
047050	Evergreen Local	\$97,005
049882	Marlington Local	\$96,072
044941	Urbana City	\$94,264
046748	Big Walnut Local	\$93,122
049700	Hopewell-Loudon Local	\$91,830
044040	Garfield Heights City Schools	\$89,399
050054	Revere Local	\$88,375
043968	Fairborn City	\$87,503
044826	Steubenville City	\$87,433
044701	Rocky River City	\$86,320
044057	Geneva Area City	\$85,509
044362	Maumee City	\$84,590
046979	Groveport Madison Local	\$84,562
049999	Coventry Local	\$83,562
044958	Vandalia-Butler City	\$82,108
049973	Woodridge Local	\$81,798
045559	New Richmond Exempted Village	\$81,473
048926	Benton Carroll Salem Local	\$80,345
045005	Warrensville Heights City	\$79,285
043869	Defiance City	\$78,182
050542	Dalton Local	\$78,088
045435	Indian Hill Exempted Village	\$77,297
043984	Findlay City	\$76,330
043596	Bellevue City	\$76,314
044099	Greenville City	\$75,010
046946	Canal Winchester Local	\$74,438
043539	Barberton City	\$74,182
050021	Hudson City	\$73,214
049981	Copley-Fairlawn City	\$72,868
045534	Mount Gilead Exempted Village	\$70,909
049247	Waterloo Local	\$70,853
048462	Black River Local	\$70,583
044214	Lebanon City	\$70,558
044156	Jackson City	\$70,515
047167	Berkshire Local	\$70,180
047589	Liberty Center Local	\$70,170
047001	Reynoldsburg City	\$69,185
048611	Bethel Local	\$68,895

IRN	Resident District	Total Payment/Deduction
045153	Xenia Community City	\$68,815
045427	Hubbard Exempted Village	\$68,646
050195	Liberty Local	\$68,318
044651	Port Clinton City	\$67,286
044883	Tallmadge City	\$66,786
043745	Chillicothe City	\$66,580
045625	Upper Sandusky Exempted Village	\$66,402
049452	Madison Local	\$66,132
045179	Zanesville City	\$65,603
049932	Plain Local	\$65,186
043729	Celina City	\$65,033
050039	Mogadore Local	\$64,676
048116	Avon Local	\$64,046
048686	Jefferson Township Local	\$63,410
045146	Wyoming City	\$63,050
047795	Edison Local	\$63,011
048702	Mad River Local	\$62,632
048124	Avon Lake City	\$62,019
044180	Kettering City School District	\$61,871
044438	Napoleon Area City	\$61,718
048470	Buckeye Local	\$61,471
050435	Kings Local	\$60,953
049536	Union-Scioto Local	\$60,738
049171	Aurora City	\$59,771
045195	Amherst Exempted Village	\$59,251
049635	Northwest Local	\$58,876
047175	Cardinal Local	\$58,193
048025	North Fork Local	\$57,875
046805	Margaretta Local	\$57,752
046813	Perkins Local	\$57,603
045617	Tipp City Exempted Village	\$57,528
049205	James A Garfield Local	\$56,785
044115	Heath City	\$56,565
050567	Norwayne Local	\$56,510
049478	Ontario Local	\$56,101
046722	Northeastern Local	\$55,951
045344	Crestline Exempted Village	\$55,064
044917	Toronto City	\$54,581
046151	Talawanda City	\$54,340
050252	Weathersfield Local	\$54,000

IRN	Resident District	Total Payment/Deduction
046193	Graham Local	\$52,694
044693	Reading Community City	\$52,668
050724	Otsego Local	\$52,619
047217	Newbury Local	\$50,676
048371	Springfield Local	\$50,025
045567	Newton Falls Exempted Village	\$49,974
045609	Rossford Exempted Village	\$49,642
044552	Norton City	\$49,190
050005	Manchester Local	\$48,990
045096	Willard City	\$47,568
046565	Independence Local	\$47,203
043703	Campbell City	\$47,010
047597	Patrick Henry Local	\$46,780
047076	Pettisville Local	\$46,780
048876	Tri-Valley Local	\$46,461
049122	Eastern Local School District	\$45,845
044024	Galion City	\$45,644
050682	Elmwood Local	\$45,287
050427	Springboro Community City	\$45,198
050583	Southeast Local	\$45,125
044420	Mount Vernon City	\$44,478
049627	Minford Local	\$44,197
047456	McComb Local	\$43,586
043901	East Cleveland City School District	\$43,504
046003	Shadyside Local	\$43,093
046599	Richmond Heights Local	\$42,580
045765	Bath Local	\$41,735
044164	Kent City	\$40,840
045336	Covington Exempted Village	\$39,320
044347	Martins Ferry City	\$38,955
043661	Brunswick City	\$38,726
045377	Georgetown Exempted Village	\$38,250
049668	Wheelersburg Local	\$37,679
043851	Deer Park Community City	\$37,593
045476	Marysville Exempted Village	\$37,005
045070	Whitehall City	\$36,640
044610	Orrville City	\$35,368
044735	Salem City	\$35,230
046847	Amanda-Clearcreek Local	\$35,018
049445	Lucas Local	\$34,466

IRN	Resident District	Total Payment/Deduction
046854	Berne Union Local	\$34,010
047688	East Holmes Local	\$33,510
049239	Streetsboro City	\$33,395
044479	New Lexington School District	\$33,324
048801	Highland Local	\$32,810
049080	Logan Elm Local	\$32,591
046573	Olmsted Falls City	\$32,038
047415	Arcadia Local	\$32,003
043505	Ashland City	\$31,198
044560	Norwalk City	\$30,295
045328	Columbiana Exempted Village	\$30,015
043976	Fairview Park City	\$30,015
048942	Genoa Area Local	\$30,015
044065	Girard City School District	\$30,015
045518	Milton-Union Exempted Village	\$30,015
046136	New Miami Local	\$30,015
048694	Trotwood-Madison City	\$29,925
046284	Clark-Shawnee Local	\$29,898
046482	River View Local	\$29,689
044313	Mariemont City	\$29,688
043687	Bucyrus City	\$28,927
049056	Northern Local	\$28,351
048017	Licking Valley Local	\$28,204
043570	Bellaire Local	\$27,514
045575	Paulding Exempted Village	\$27,000
047829	Centerburg Local	\$26,239
047886	Madison Local	\$25,835
050708	North Baltimore Local	\$25,627
049379	Ottawa-Glandorf Local	\$25,408
049577	Woodmore Local	\$25,090
048389	West Branch Local	\$24,943
045906	Alexander Local	\$24,750
046367	Williamsburg Local	\$24,618
050674	Eastwood Local	\$24,582
045856	Buckeye Local	\$24,577
048835	East Muskingum Local	\$24,516
048819	Northmor Local	\$23,915
050286	Indian Valley Local	\$23,390
046201	Triad Local	\$23,390
048793	Cardington-Lincoln Local	\$23,240

IRN	Resident District	Total Payment/Deduction
049908	Northwest Local	\$22,903
044685	Ravenna City	\$22,817
049429	Crestview Local	\$21,083
050633	Millcreek-West Unity Local	\$20,815
050393	Vinton County Local	\$20,681
048173	Midview Local	\$20,595
049395	Pandora-Gilboa Local	\$20,308
045658	Wellington Exempted Village	\$20,010
045229	Bradford Exempted Village	\$20,010
043653	Brooklyn City	\$20,010
043760	Circleville City	\$20,010
046334	Felicity-Franklin Local	\$20,010
048595	Fort Recovery Local	\$20,010
044248	Logan-Hocking Local	\$20,010
048520	Meigs Local	\$20,010
044396	Miamisburg City	\$20,010
044529	North Olmsted City	\$20,010
048421	Pleasant Local	\$20,010
045880	Pymatuning Valley Local	\$20,010
046078	Ripley-Union-Lewis-Huntington Local	\$20,010
045591	Rittman Exempted Village	\$20,010
045054	West Carrollton City	\$20,010
049411	Clear Fork Valley Local	\$20,009
047852	Fredericktown Local	\$20,009
048363	South Range Local	\$20,005
048322	Jackson-Milton Local	\$19,967
045955	New Bremen Local	\$19,863
043778	Claymont City	\$19,659
044982	Wapakoneta City	\$19,652
046953	Hamilton Local	\$19,538
050112	Bristol Local	\$19,135
046235	Greenon Local	\$19,010
044628	Painesville City Local	\$18,834
049098	Teays Valley Local	\$17,617
048132	Clearview Local	\$17,500
045369	Fairport Harbor Exempted Village	\$17,053
043810	Conneaut Area City	\$16,675
043935	Eaton Community City	\$16,333
050559	Green Local	\$16,148
046037	Eastern Local	\$15,622

IRN	Resident District	Total Payment/Deduction
050153	Mathews Local	\$15,600
048751	Huber Heights City	\$15,008
046276	Southeastern Local	\$14,990
050591	Triway Local	\$14,742
050203	Lordstown Local	\$14,648
050740	Mohawk Local	\$14,505
047845	East Knox Local	\$14,353
048165	Keystone Local	\$13,605
047571	Holgate Local	\$13,556
046508	Buckeye Central Local	\$13,065
047514	Riverdale Local	\$12,814
047902	Perry Local	\$11,657
045997	St Clairsville-Richland City	\$11,570
043893	Dover City	\$11,200
050534	Chippewa Local	\$11,070
061903	Adams County Ohio Valley Local	\$10,710
044008	Franklin City	\$10,006
045450	Lisbon Exempted Village	\$10,005
049494	Adena Local	\$10,005
043497	Alliance City	\$10,005
048074	Benjamin Logan Local	\$10,005
050138	Champion Local	\$10,005
049601	Clay Local	\$10,005
048140	Columbia Local	\$10,005
048934	Danbury Local	\$10,005
046094	Edgewood City	\$10,005
049775	Fairlawn Local	\$10,005
049619	Green Local	\$10,005
044131	Huron City Schools	\$10,005
045872	Jefferson Area Local	\$10,005
048256	Jefferson Local	\$10,005
049874	Louisville City	\$10,005
048272	Madison-Plains Local	\$10,005
048629	Miami East Local	\$10,005
044495	Niles City	\$10,005
048736	Northridge Local	\$10,005
047761	Oak Hill Union Local	\$10,005
048215	Ottawa Hills Local	\$10,005
049213	Rootstown Local	\$10,005
048587	St Henry Consolidated Local	\$10,005

IRN	Resident District	Total Payment/Deduction
046458	United Local	\$10,005
047696	West Holmes Local	\$10,005
046219	West Liberty-Salem Local	\$10,005
045112	Wilmington City	\$10,005
045674	Yellow Springs Exempted Village	\$10,005
048884	West Muskingum Local	\$10,003
046557	Cuyahoga Heights Local	\$9,996
050328	Fairbanks Local	\$9,992
050369	Lincolnview Local	\$9,978
047092	Swanton Local	\$9,938
044768	Sheffield-Sheffield Lake City	\$9,909
048850	Maysville Local	\$9,564
048843	Franklin Local	\$9,541
049924	Perry Local	\$9,485
048157	Firelands Local	\$9,370
050690	Lake Local	\$9,342
049726	Old Fort Local	\$9,171
048652	Switzerland of Ohio Local	\$9,171
049643	Valley Local	\$9,146
045823	Hillsdale Local	\$9,005
049841	Fairless Local	\$8,925
046474	Ridgewood Local	\$8,785
046045	Fayetteville-Perry Local	\$8,705
046888	Liberty Union-Thurston Local	\$8,400
047068	Fayette Local	\$7,676
045302	Clyde-Green Springs Exempted Village	\$7,623
091397	Tri-County North Local	\$7,578
046391	Clinton-Massie Local	\$7,534
046870	Fairfield Union Local	\$7,504
045278	Carrollton Exempted Village	\$7,500
049353	Leipsic Local	\$7,167
047266	Greeneview Local	\$7,054
045781	Perry Local	\$6,719
049783	Fort Loramie Local	\$5,462
044073	Grandview Heights Schools	\$5,003
049528	Southeastern Local	\$5,003
049510	Paint Valley Local	\$5,000
050575	Northwestern Local	\$4,923
045468	Loudonville-Perrysville Exempted Village	\$4,300
050245	LaBrae Local	\$4,200

IRN	Resident District	Total Payment/Deduction
049106	Westfall Local	\$1,820
046862	Bloom-Carroll Local	\$1,649
048330	Lowellville Local	\$1,436
050237	Southington Local	\$1,086
049833	Canton Local	\$1,035
046425	Beaver Local	\$1,000

Appendix C. Number of FY 2017 Scholarship Students by Provider

IRN	Provider	Number of Students
088070	Marburn Academy	181
009270	Lawrence School-Upper School Campus	167
012871	PSI Associates/Affiliates	155
067603	Springer School & Center	147
013050	A+ Solutions	102
069914	Lawrence School	91
053983	Cleveland Central Catholic	91
068403	Valley Christian School	86
055087	St Ignatius Loyola	72
009967	ACLD Learning Center	65
064915	Lake Center Christian School	65
053140	Lasalle	64
011431	Academic Tutoring, LLC	61
010592	Tree of Knowledge Learning Centers	58
053546	St Edward	57
053454	Purcell-Marian	57
010582	S.U.P.E.R. Learning Center's Faith Christian Academy	52
053637	Saint John School	52
052647	Stephen T Badin	51
053488	Roger Bacon	51
052878	Chaminade-Julienne	48
052803	Carroll	47
052787	Cardinal Mooney	47
053850	St Vincent St Mary	45
010525	North Coast Tutoring Services	43
015486	Kairos Academy	42
013438	New Horizons Academy at Sara's Garden	41
011873	Highland Community Learning Center	40
053785	St Peter High School and Junior High School	39

IRN	Provider	Number of Students
052779	Calvert Catholic Schools	39
053751	Sandusky Central Catholic School	38
053686	Bishop Hoffman Catholic, St Joseph Central Catholic HS	37
056911	Julie Billiart	37
014635	Tri-County Intervention and Tutoring Services, LLC	36
053835	St Ursula Academy	35
053587	St Francis De Sales	35
053058	Hebrew Academy Of Cleveland	34
054577	Our Lady Of Victory	33
057521	Sacred Heart Of Jesus	32
054015	St John's Jesuit	30
056713	St Albert The Great	30
058065	St Matthew	30
054346	Holy Angels	30
057778	St Andrew	29
053884	Seton	29
015331	Portsmouth Stem Academy	28
058016	St Mary	28
012680	Western Reserve Speech and Language Partners-Geauga, LLC	28
056770	St Columbkille	28
054908	St Cecilia	28
012974	The Center for Autism and Dyslexia	27
058677	Our Lady Of Perpetual Help	27
054809	John Paul II Catholic School	27
013911	McKeon Education Group, Inc.	27
093757	Fuchs Mizrahi Of Cleveland	26
056390	Academy of St Adalbert	26
134619	Emmanuel Christian Academy	26
067447	Mercy Montessori Center	26
053801	St Rita School for the Deaf	26
055913	St Adalbert	26
010507	Learning Spectrum, LTD	26
124883	St Brigid Of Kildare	25
053660	Villa Angela-St Joseph	25
122465	Nicholas School	25
057018	St Francis De Sales	25
057299	St Jude	25
055103	St James	25
014110	Spectrum Resource Center and School	25

IRN	Provider	Number of Students
054957	St Clement	24
112490	Nightingale Montessori Inc	24
057216	Notre Dame School	23
012537	Schaefer Education Solutions	23
053595	St Francis De Sales School	23
057836	St Brendan	23
055244	St Louis	22
055657	St William	21
055178	St Joseph	21
055145	St John The Baptist	21
050575	Northwestern Local	21
015184	The Learning Spectrum Newark	21
115535	Kingsway Christian	20
052795	Cardinal Stritch Catholic High School & Academy	20
053272	McAuley High School	20
053645	St John Elementary and High School	20
052720	Bishop Watterson	19
053082	Lehman High School	19
009467	Genoa Christian Academy	19
013886	Acacia Center	19
011716	Sylvan Learning Center - Lucas County	19
059964	Holy Family	19
015340	LearningRx Akron/Bath dba Buie Cognitive Development	18
059378	St Peter	18
125310	Troy Christian High School	18
010497	Kid Power Therapy Services, Inc.	17
012822	The Galvin Therapy Center/Barrie G. Galvin, OTR/L & Associat	17
134387	Central College Christian Academy	17
053371	Notre Dame-Cathedral Latin	17
013053	Total Education Solutions	17
053363	Notre Dame Jr/Sr	17
012975	The Center for Autism and Dyslexia Findlay	16
113522	Christian Academy Schools	16
125278	Heartland Christian School	16
058875	St Charles	15
058131	Sts Peter And Paul	15
015187	The Disability Resource Network, Inc.	15
015059	Out of the Box Behavioral Solutions LLC	15
143008	Bowling Green Christian Acdmy	15

IRN	Provider	Number of Students
092247	Gilead Christian	15
052654	Beaumont School	15
010426	Cincinnati Center for Improved Communication, Inc.	15
059451	St Rose	14
058040	Notre Dame	14
054437	Immaculate Heart Of Mary	14
012129	Skyward Learning Services	14
015339	Skyward Academy	14
013316	Flourish Integrated Therapy, LLC	14
057844	St Catharine	14
013063	SEGULA	14
014281	Terri's Teaching and Tutoring	13
138073	The Good Shepherd Catholic Montessori	13
015212	ADHD CoachConnect LLC	12
057034	St Hilary	12
010187	Bishop John King Mussio Central Junior High School	12
053439	Padua Franciscan	12
096719	Harvest Preparatory School	12
010498	KidsLink Neurobehavioral Center	12
059089	St Joseph	11
010503	Langsford Learning Acceleration Centers - Blue Ash	11
057109	St Vincent De Paul	11
012916	Brain Balance Achievement Center	11
012346	Columbus Therapy Associates, LLC	11
010531	Northrup and Associates	11
013891	Jon R. Lindsey	11
013317	Capital Therapy Services	11
011576	Ross County Christian Academy	11
120675	Central Montessori Academy	11
070789	Discovery	11
058768	St Aloysius	10
058685	Regina Coeli	10
058628	St Mary	10
058560	Immaculate Conception	10
058552	Immaculate Conception	10
015226	Navigating Autism	10
058396	St Mary Central	10
057992	Bishop Flaget	10
015152	Langsford Learning Acceleration Centers - West Chester	10

IRN	Provider	Number of Students
056754	Saint Bridget of Kildare School	10
012365	Club Z! In-Home Tutoring Service - Akron	10
055418	St Michael	10
014465	S.M.I.L.E.S. Integrative Therapy Services, LLC	10
012345	Aaris Therapy Group, Inc.	10
053611	St Joan Of Arc	10
132530	Emmanuel Christian School	10
058487	Blessed Sacrament	10
132928	Christian Life Academy	10
058305	Bishop John King Mussio Central Elementary - Rosemont Campus	<10
010586	The Center for Lifeskills	<10
057695	Our Lady Of Perpetual Help	<10
012519	Nicole Gerami, LLC	<10
015035	The Self Reliance Autism Center	<10
052837	Catholic Central	<10
010407	Applied Behavioral Services	<10
090233	Troy Christian Elementary School	<10
053165	Lima Central Catholic	<10
013095	Powers Educational Services	<10
013084	Huntington Learning Center	<10
058933	St Francis Xavier	<10
058859	St Boniface	<10
058727	Sacred Heart	<10
012672	Bair Herman Enterprise, Inc., dba EJ Therapy Services	<10
055368	Piqua Catholic Elementary	<10
054411	Immaculate Conception	<10
053868	St Wendelin Catholic School	<10
011928	F.I.T. (Friendship In Team)	<10
119313	Gloria Dei Montessori	<10
112508	Montessori School of Bowling Green	<10
089409	Welsh Hills School	<10
067629	Mansfield Christian School	<10
059287	St Mary	<10
015442	New Spring Special Education Services, LLC	<10
058909	All Saints Catholic	<10
015085	Rising Star Learning Center	<10
059055	St Joseph	<10
055582	St Teresa Of Avila	<10
059246	Holy Trinity, Assumption	<10

IRN	Provider	Number of Students
013799	Haugland Learning Center LLC	<10
011714	Sylvan Learning Center - Allen County	<10
134528	New Hope Christian Academy	<10
052670	Wm V Fisher Catholic	<10
059204	St Mary Catholic School	<10
059071	St Joseph	<10
010602	Vision Development Team	<10
058321	St John	<10
055434	St Patrick	<10
014687	Out of the Box Behavioral Solutions - Transitions Program	<10
055400	St Michael Consolidated	<10
010483	Jay H. Berk, Ph.D.	<10
014004	Musical Fingers, LLC	<10
132878	Potential Development/Autism	<10
013234	Brain Balance Achievement Center - Canton	<10
123109	Decolores Montessori School	<10
110973	Cleveland Sight Center	<10
095711	Akiva Academy	<10
012900	Crossroads Christian Academy	<10
010414	Building Blocks to a Brighter Future, LLC	<10
015154	Therapy and Wellness Connection	<10
057810	St Bernadette	<10
014875	Blue Horizon Consulting, LLC	<10
055632	St Vincent Ferrer	<10
014781	Columbus Tutoring Services, LLC	<10
010471	Helping Hands Center dba Bridgeway Academy	<10
134460	Cornerstone Community	<10
013237	The Fleming Learning Center, LLC	<10
120865	Emmanuel Christian Academy	<10
008071	Temple Christian School	<10
011517	Sensational Kids Daycare & Learning Center, LLC	<10
110031	Wooster Christian	<10
096347	Linden Grove School	<10
089979	Medina Christian Academy	<10
050567	Norwayne Local	<10
048462	Black River Local	<10
010505	LLA Therapy - Akron	<10
016033	Ms. Donna's Adaptive Learning Center	<10
015678	Judit Kiss	<10

IRN	Provider	Number of Students
059196	St Mary	<10
058941	St Gerard	<10
058834	St Augustine	<10
015119	Bross Center for Learning and Achievement	<10
015012	Applied Behavioral Services West Chester	<10
014653	The Nest	<10
014433	Harrison Center for Children	<10
054544	Our Lady Of Rosary	<10
014157	Haugland Learning Center-Dublin	<10
054239	Ascension	<10
011715	Sylvan Learning Center - Defiance County	<10
134429	Toledo Islamic Academy	<10
096974	Canton Montessori	<10
068056	St Veronica	<10
010780	The Golden Key Center for Exceptional Children	<10
015489	The Golden Key Center for Exceptional Children	<10
015334	Cincinnati Therapy Connections LLC	<10
012839	Cleveland Clinic Children's Hospital for Rehabilitation	<10
056812	St Dominic	<10
010539	Pediatric Therapy Partners, LLC	<10
055228	St Lawrence	<10
010537	Peak Potential Therapy	<10
055012	St Francis Seraph	<10
054429	Immaculate Conception	<10
011946	New Dimensions, Inc.	<10
053769	Norwalk Catholic School	<10
010527	Music Therapy Services	<10
011717	Sylvan Learning Center - Wood County	<10
084202	Middletown Christian	<10
011317	Education Alternative-Cuyahoga Falls	<10
070409	Cincinnati Christian Schools	<10
016445	Rita Cevasco & Associates	<10
015608	Acacia Center, Inc	<10
015557	Haugland Learning Center Lancaster	<10
015493	Education Alternative-Ravenna	<10
059022	Holy Cross Catholic School of Defiance	<10
015330	Patricia L. Closson	<10
010500	Climbing Ladders Speech-Language Therapy	<10
058024	St Mary	<10

IRN	Provider	Number of Students
057919	St John	<10
015150	Cincinnati Center for Improved Communication, Inc.	<10
015110	Christina M. Guisbert PT for Kids, LLC	<10
012371	Specialized Speech Technologies, Inc.	<10
012130	Sylvan Learning Center - Hancock County	<10
010529	Music Therapy Enrichment Center, Inc.	<10
053652	St John Central	<10
013620	Lianne Russell	<10
013275	Wood County Hospital: Ready Program	<10
010519	Miami Valley Tutoring Services, Ltd.	<10
132621	Ohio Valley Voices	<10
093039	South Suburban Montessori	<10
013068	Sylvan Learning Center - Putnam County	<10
011313	Education Alternative-Bedford	<10
060582	Celeryville Christian	<10
015447	Lisa Tiberi-Ruth	<10
010593	Triangle Therapy Services, LLC	<10
058404	St Mary	<10
012677	Learning Advantage Services, LLC	<10
057901	St James The Less	<10
015121	Advanced Therapy Solutions LLC	<10
010553	Therapy in Motion, LLC	<10
012480	Knapp Center for Childhood Development, LLC	<10
015053	Skyward New Hope	<10
014820	The Learning Spectrum Sunbury	<10
012359	Reach Educational Services	<10
014387	Rebecca Granger	<10
014224	Food for Good Thought, Inc.	<10
054205	All Saints	<10
014017	Home Tutoring Solutions	<10
013922	The Learning Spectrum Canal Winchester	<10
013330	Laura Faye Clubok	<10
010464	Fun 2 Be Me Developmental Therapy	<10
013302	Kinderspeech	<10
053314	Mother Of Mercy High School	<10
132456	Hanna Perkins	<10
013228	Stefanie Peck, M.A. CCC-SLP	<10
013206	Insight Learning and Wellness Center, llc	<10
016674	St. Andre Scholars	<10

IRN	Provider	Number of Students
016439	Tessa Bobst	<10
064931	The Childrens Home of Cincinnati	<10

Appendix D. FY 2017 Federal Aid (IDEA Part B) Allocation by Resident District

IRN	District	Federal Aid Amount
043786	Cleveland Municipal	\$14,254,162
043802	Columbus City School District	\$12,731,725
043752	Cincinnati City	\$10,126,569
044909	Toledo City	\$6,745,162
043489	Akron City	\$5,618,083
044800	South-Western City	\$4,238,760
043844	Dayton City	\$4,154,763
046110	Lakota Local	\$3,110,738
044636	Parma City	\$2,879,703
047019	Hilliard City	\$2,817,453
046763	Olentangy Local	\$2,662,081
045047	Westerville City	\$2,583,763
047027	Dublin City	\$2,467,704
047365	Northwest Local	\$2,451,955
044107	Hamilton City	\$2,440,089
043711	Canton City	\$2,435,233
045161	Youngstown City	\$2,172,260
046102	Fairfield City	\$2,076,007
044818	Springfield City School District	\$1,918,224
046359	West Clermont Local	\$1,888,811
045138	Worthington City	\$1,840,687
044263	Lorain City	\$1,797,870
045492	Mentor Exempted Village	\$1,789,355
045104	Willoughby-Eastlake City	\$1,739,061
047373	Oak Hills Local	\$1,730,325
043943	Elyria City Schools	\$1,685,254
044180	Kettering City School District	\$1,657,665
046961	Gahanna-Jefferson City	\$1,650,077
050450	Mason City	\$1,648,091
044875	Sylvania Schools	\$1,642,557
043794	Cleveland Heights-University Heights City	\$1,593,299
043612	Berea City	\$1,578,569
046896	Pickerington Local	\$1,543,155

IRN	District	Federal Aid Amount
048231	Washington Local	\$1,527,685
044198	Lakewood City	\$1,436,018
043661	Brunswick City	\$1,427,924
047241	Beavercreek City	\$1,427,485
044388	Medina City SD	\$1,424,203
047340	Forest Hills Local	\$1,410,347
044453	Newark City	\$1,398,741
044677	Princeton City	\$1,331,435
046979	Groveport Madison Local	\$1,326,065
043984	Findlay City	\$1,299,337
049932	Plain Local	\$1,294,297
043950	Euclid City	\$1,289,110
044206	Lancaster City	\$1,282,243
045500	Milford Exempted Village	\$1,267,557
048751	Huber Heights City	\$1,247,785
044750	Shaker Heights City	\$1,244,970
047001	Reynoldsburg City	\$1,213,771
044933	Upper Arlington City	\$1,212,498
044222	Lima City	\$1,194,476
044842	Strongsville City	\$1,188,494
050021	Hudson City	\$1,186,125
043836	Cuyahoga Falls City	\$1,184,035
044867	Sycamore Community City	\$1,175,783
043877	Delaware City	\$1,140,107
044396	Miamisburg City	\$1,126,929
044297	Mansfield City	\$1,126,187
045153	Xenia Community City	\$1,060,064
044925	Troy City	\$1,042,805
043513	Ashtabula Area City	\$1,040,262
048298	Austintown Local Schools	\$1,018,947
043968	Fairborn City	\$1,007,033
049924	Perry Local	\$996,361
044834	Stow-Munroe Falls City School District	\$983,738
044016	Fremont City	\$980,500
045179	Zanesville City	\$978,549
045476	Marysville Exempted Village	\$974,310
044214	Lebanon City	\$969,974
044370	Mayfield City	\$954,720
043539	Barberton City	\$938,568

IRN	District	Federal Aid Amount
049858	Jackson Local	\$936,597
044743	Sandusky City	\$934,754
044420	Mount Vernon City	\$931,451
044081	Winton Woods City	\$924,983
044040	Garfield Heights City Schools	\$923,795
048223	Springfield Local	\$919,051
046607	Solon City	\$915,756
048728	Northmont City	\$914,782
050427	Springboro Community City	\$906,247
061903	Adams County Ohio Valley Local	\$906,218
044792	South Euclid-Lyndhurst City	\$904,370
044545	North Royalton City	\$892,314
047381	Southwest Local	\$878,897
044271	Loveland City	\$878,449
045120	Wooster City	\$875,344
044503	North Canton City	\$873,858
044784	Sidney City	\$857,688
048702	Mad River Local	\$851,929
048306	Boardman Local	\$850,454
045583	Perrysburg Exempted Village	\$848,898
050435	Kings Local	\$841,669
044644	Piqua City	\$835,488
050047	Nordonia Hills City	\$832,337
044412	Mt Healthy City	\$821,293
044974	Wadsworth City	\$820,523
044529	North Olmsted City	\$819,865
044537	North Ridgeville City	\$812,170
045062	Westlake City	\$798,002
044305	Maple Heights City	\$795,558
048207	Anthony Wayne Local	\$788,218
044248	Logan-Hocking Local	\$787,887
044602	Oregon City	\$777,963
043562	Bedford City	\$769,136
046094	Edgewood City	\$766,987
050013	Green Local	\$765,094
045054	West Carrollton City	\$763,748
044164	Kent City	\$757,181
043646	Brecksville-Broadview Heights City	\$755,930
045070	Whitehall City	\$754,016

IRN	District	Federal Aid Amount
043745	Chillicothe City	\$750,037
049452	Madison Local	\$737,518
047894	Riverside Local	\$735,801
045195	Amherst Exempted Village	\$735,587
043505	Ashland City	\$734,786
043638	Bowling Green City School District	\$730,829
047183	Chardon Local	\$726,099
043497	Alliance City	\$723,196
048116	Avon Local	\$721,215
050070	Twinsburg City	\$707,262
044701	Rocky River City	\$704,544
048041	Southwest Licking Local	\$696,694
044560	Norwalk City	\$693,839
046573	Olmsted Falls City	\$693,507
044891	Tiffin City	\$692,462
043901	East Cleveland City School District	\$691,848
046995	New Albany-Plain Local	\$685,641
049866	Lake Local	\$684,966
048694	Trotwood-Madison City	\$680,313
044628	Painesville City Local	\$670,532
044958	Vandalia-Butler City	\$666,103
050443	Little Miami Local	\$661,006
046946	Canal Winchester Local	\$658,757
046243	Tecumseh Local	\$654,118
044826	Steubenville City	\$652,948
048124	Avon Lake City	\$643,895
046250	Northeastern Local	\$642,722
049098	Teays Valley Local	\$642,166
046060	Western Brown Local	\$641,051
044008	Franklin City	\$640,160
046748	Big Walnut Local	\$629,145
044362	Maumee City	\$623,941
049981	Copley-Fairlawn City	\$620,487
044982	Wapakoneta City	\$620,454
050062	Springfield Local	\$610,059
043869	Defiance City	\$609,742
044685	Ravenna City	\$607,898
049874	Louisville City	\$603,807
048009	Licking Heights Local	\$601,165

IRN	District	Federal Aid Amount
043729	Celina City	\$600,595
046151	Talawanda City	\$598,600
046953	Hamilton Local	\$594,811
044099	Greenville City	\$592,645
043893	Dover City	\$588,463
044669	Portsmouth City	\$586,187
045112	Wilmington City	\$586,088
048173	Midview Local	\$585,532
046342	Goshen Local	\$583,081
045435	Indian Hill Exempted Village	\$579,296
047886	Madison Local	\$571,194
046144	Ross Local	\$568,229
044156	Jackson City	\$564,906
043992	Fostoria City	\$558,329
045559	New Richmond Exempted Village	\$557,427
043547	Bay Village City	\$556,800
044495	Niles City	\$556,324
048496	Highland Local	\$544,919
047332	Finneytown Local	\$542,249
045773	Elida Local	\$540,927
048652	Switzerland of Ohio Local	\$539,927
043620	Bexley City	\$536,245
048876	Tri-Valley Local	\$535,837
048488	Cloverleaf Local	\$534,821
044057	Geneva Area City	\$531,632
047696	West Holmes Local	\$530,594
050393	Vinton County Local	\$525,946
049882	Marlington Local	\$515,237
050054	Revere Local	\$513,569
047803	Indian Creek Local	\$505,536
045799	Shawnee Local	\$503,536
048314	Canfield Local	\$502,488
043778	Claymont City	\$501,802
043760	Circleville City	\$495,796
044941	Urbana City	\$491,011
047191	Kenston Local	\$487,491
044883	Tallmadge City	\$486,294
044578	Norwood City	\$485,428
047225	West Geauga Local	\$478,255

IRN	District	Federal Aid Amount
047787	Buckeye Local	\$477,833
049171	Aurora City	\$474,001
046482	River View Local	\$473,866
044735	Salem City	\$472,128
043596	Bellevue City	\$471,657
045278	Carrollton Exempted Village	\$471,447
048520	Meigs Local	\$466,665
046755	Buckeye Valley Local	\$464,839
049833	Canton Local	\$464,456
045302	Clyde-Green Springs Exempted Village	\$460,318
044693	Reading Community City	\$460,266
046821	Vermilion Local	\$459,538
046581	Orange City	\$457,157
044438	Napoleon Area City	\$456,911
043976	Fairview Park City	\$456,712
043810	Conneaut Area City	\$455,524
049056	Northern Local	\$450,907
049080	Logan Elm Local	\$442,866
139303	Monroe Local	\$442,185
048348	Poland Local	\$442,050
049999	Coventry Local	\$440,805
044552	Norton City	\$439,279
044776	Shelby City	\$436,838
046813	Perkins Local	\$436,609
048850	Maysville Local	\$436,317
046193	Graham Local	\$433,250
048736	Northridge Local	\$432,848
045088	Wickliffe City	\$430,611
048389	West Branch Local	\$429,926
049197	Field Local	\$428,992
049437	Lexington Local	\$425,089
043935	Eaton Community City	\$421,143
044024	Galion City	\$417,650
048843	Franklin Local	\$416,058
044651	Port Clinton City	\$414,714
045617	Tipp City Exempted Village	\$413,823
049536	Union-Scioto Local	\$410,879
045393	Granville Exempted Village	\$410,268
045609	Rossford Exempted Village	\$409,473

IRN	District	Federal Aid Amount
050591	Triway Local	\$408,908
044479	New Lexington School District	\$407,913
045005	Warrensville Heights City	\$406,302
047399	Three Rivers Local	\$405,934
044859	Struthers City	\$404,532
046300	Batavia Local	\$401,422
048470	Buckeye Local	\$401,182
047993	Lakewood Local	\$400,992
045427	Hubbard Exempted Village	\$400,874
047795	Edison Local	\$400,072
049908	Northwest Local	\$395,170
045021	Wellston City	\$392,117
044065	Girard City School District	\$391,657
048017	Licking Valley Local	\$389,940
048926	Benton Carroll Salem Local	\$387,350
043554	Beachwood City	\$384,535
045997	St Clairsville-Richland City	\$382,253
050286	Indian Valley Local	\$382,239
045096	Willard City	\$380,901
049973	Woodridge Local	\$379,322
049239	Streetsboro City	\$379,029
048835	East Muskingum Local	\$376,663
046425	Beaver Local	\$375,632
047688	East Holmes Local	\$374,471
050724	Otsego Local	\$372,779
046284	Clark-Shawnee Local	\$371,420
043570	Bellaire Local	\$366,846
045575	Paulding Exempted Village	\$364,467
045625	Upper Sandusky Exempted Village	\$364,419
045906	Alexander Local	\$364,394
050583	Southeast Local	\$363,093
045872	Jefferson Area Local	\$361,533
045765	Bath Local	\$361,238
045286	Chagrin Falls Exempted Village	\$358,412
043687	Bucyrus City	\$356,297
044610	Orrville City	\$355,422
049635	Northwest Local	\$351,060
046326	Clermont Northeastern Local	\$350,311
044511	North College Hill City	\$347,365

IRN	District	Federal Aid Amount
044768	Sheffield-Sheffield Lake City	\$344,252
049841	Fairless Local	\$340,104
045856	Buckeye Local	\$338,420
045641	Wauseon Exempted Village	\$336,891
044313	Mariemont City	\$336,378
046870	Fairfield Union Local	\$334,364
044719	St Bernard-Elmwood Place City	\$333,731
045146	Wyoming City	\$333,468
044347	Martins Ferry City	\$333,065
048165	Keystone Local	\$331,993
046235	Greenon Local	\$331,576
048025	North Fork Local	\$331,266
048074	Benjamin Logan Local	\$331,143
044115	Heath City	\$329,376
049106	Westfall Local	\$327,381
048157	Firelands Local	\$324,916
043653	Brooklyn City	\$320,382
048884	West Muskingum Local	\$320,027
048801	Highland Local	\$318,382
049379	Ottawa-Glandorf Local	\$317,310
047092	Swanton Local	\$316,810
046862	Bloom-Carroll Local	\$311,831
045880	Pymatuning Valley Local	\$311,709
049650	Washington-Nile Local	\$310,623
046391	Clinton-Massie Local	\$308,842
045518	Milton-Union Exempted Village	\$307,653
043851	Deer Park Community City	\$302,377
049411	Clear Fork Valley Local	\$300,931
048132	Clearview Local	\$299,394
044131	Huron City Schools	\$298,877
044289	Madeira City	\$297,028
043885	Delphos City	\$295,917
047902	Perry Local	\$295,533
046037	Eastern Local	\$295,200
049544	Zane Trace Local	\$293,860
049478	Ontario Local	\$293,744
046474	Ridgewood Local	\$293,723
050690	Lake Local	\$293,478
050534	Chippewa Local	\$289,948

IRN	District	Federal Aid Amount
046847	Amanda-Clearcreek Local	\$289,640
050674	Eastwood Local	\$288,390
047266	Greeneview Local	\$286,740
049668	Wheelersburg Local	\$284,271
043703	Campbell City	\$284,112
049627	Minford Local	\$283,205
047175	Cardinal Local	\$283,161
047761	Oak Hill Union Local	\$281,842
050245	LaBrae Local	\$281,770
050575	Northwestern Local	\$280,848
047084	Pike-Delta-York Local	\$280,200
049205	James A Garfield Local	\$276,787
047852	Fredericktown Local	\$273,890
050567	Norwayne Local	\$272,286
050195	Liberty Local	\$272,073
045534	Mount Gilead Exempted Village	\$266,307
050138	Champion Local	\$265,607
048256	Jefferson Local	\$264,654
048942	Genoa Area Local	\$264,249
044073	Grandview Heights Schools	\$256,767
048272	Madison-Plains Local	\$256,329
047050	Evergreen Local	\$256,285
045567	Newton Falls Exempted Village	\$250,895
050005	Manchester Local	\$250,332
049247	Waterloo Local	\$248,932
046458	United Local	\$246,478
050682	Elmwood Local	\$245,658
045591	Rittman Exempted Village	\$245,209
046722	Northeastern Local	\$242,967
048033	Northridge Local	\$241,948
045468	Loudonville-Perrysville Exempted Village	\$240,878
045658	Wellington Exempted Village	\$240,365
046888	Liberty Union-Thurston Local	\$238,801
049643	Valley Local	\$238,485
049494	Adena Local	\$238,031
048462	Black River Local	\$237,120
047845	East Knox Local	\$236,618
046805	Margaretta Local	\$234,641
047167	Berkshire Local	\$234,223

IRN	District	Federal Aid Amount
046565	Independence Local	\$232,164
046078	Ripley-Union-Lewis-Huntington Local	\$231,768
048793	Cardington-Lincoln Local	\$231,550
048363	South Range Local	\$230,639
049528	Southeastern Local	\$229,993
047829	Centerburg Local	\$226,135
046219	West Liberty-Salem Local	\$225,557
049577	Woodmore Local	\$224,550
049429	Crestview Local	\$222,829
050559	Green Local	\$220,585
048215	Ottawa Hills Local	\$219,821
049510	Paint Valley Local	\$219,687
048629	Miami East Local	\$218,691
045328	Columbiana Exempted Village	\$218,436
048421	Pleasant Local	\$213,402
047597	Patrick Henry Local	\$212,292
050328	Fairbanks Local	\$212,215
050542	Dalton Local	\$211,214
049213	Rootstown Local	\$210,864
045377	Georgetown Exempted Village	\$209,444
048819	Northmor Local	\$207,046
045450	Lisbon Exempted Village	\$204,841
046334	Felicity-Franklin Local	\$204,210
047878	Kirtland Local	\$203,614
050740	Mohawk Local	\$203,449
046367	Williamsburg Local	\$202,432
049122	Eastern Local School District	\$201,283
047589	Liberty Center Local	\$199,512
044917	Toronto City	\$198,168
048595	Fort Recovery Local	\$196,572
048371	Springfield Local	\$193,594
047514	Riverdale Local	\$193,493
091397	Tri-County North Local	\$188,745
045781	Perry Local	\$181,300
046201	Triad Local	\$180,963
046854	Berne Union Local	\$180,190
045336	Covington Exempted Village	\$180,130
048611	Bethel Local	\$178,074
050708	North Baltimore Local	\$177,092

IRN	District	Federal Aid Amount
048140	Columbia Local	\$176,582
050252	Weathersfield Local	\$175,586
049791	Hardin-Houston Local	\$173,699
045344	Crestline Exempted Village	\$172,293
046003	Shadyside Local	\$170,291
046136	New Miami Local	\$169,073
048587	St Henry Consolidated Local	\$168,540
050153	Mathews Local	\$163,251
049783	Fort Loramie Local	\$162,945
046557	Cuyahoga Heights Local	\$161,669
046045	Fayetteville-Perry Local	\$160,265
048322	Jackson-Milton Local	\$160,006
049353	Leipsic Local	\$159,746
045823	Hillsdale Local	\$159,373
049619	Green Local	\$158,941
050369	Lincolnview Local	\$157,870
046599	Richmond Heights Local	\$155,784
049700	Hopewell-Loudon Local	\$154,649
050039	Mogadore Local	\$154,445
047456	McComb Local	\$151,173
045955	New Bremen Local	\$148,739
046508	Buckeye Central Local	\$148,001
050112	Bristol Local	\$147,703
045674	Yellow Springs Exempted Village	\$144,777
046276	Southeastern Local	\$142,218
045229	Bradford Exempted Village	\$137,803
049726	Old Fort Local	\$137,683
049445	Lucas Local	\$122,564
047217	Newbury Local	\$122,410
049601	Clay Local	\$118,604
049775	Fairlawn Local	\$118,351
050633	Millcreek-West Unity Local	\$117,231
048686	Jefferson Township Local	\$116,432
047415	Arcadia Local	\$115,012
045369	Fairport Harbor Exempted Village	\$112,568
049395	Pandora-Gilboa Local	\$104,522
050203	Lordstown Local	\$101,531
048934	Danbury Local	\$101,485
050237	Southington Local	\$100,713

IRN	District	Federal Aid Amount
048330	Lowellville Local	\$94,150
047571	Holgate Local	\$93,116
050658	Stryker Local	\$90,512
047068	Fayette Local	\$85,657
047076	Pettisville Local	\$82,765

Appendix E. FY 2017 State Aid for Recipients by Resident District

IRN	Public District	Total State Funding
043752	Cincinnati City	\$1,531,490.85
043786	Cleveland Municipal	\$1,443,010.49
045161	Youngstown City	\$1,116,607.55
044909	Toledo City	\$943,303.63
043802	Columbus City School District	\$796,492.72
043489	Akron City	\$778,421.39
043794	Cleveland Heights-University Heights City	\$556,873.38
047373	Oak Hills Local	\$501,735.29
043844	Dayton City	\$471,312.81
047365	Northwest Local	\$429,149.96
044297	Mansfield City	\$402,877.88
043513	Ashtabula Area City	\$289,196.71
044636	Parma City	\$278,439.48
045641	Wauseon Exempted Village	\$275,567.79
044784	Sidney City	\$271,607.21
044222	Lima City	\$263,373.65
044453	Newark City	\$263,339.22
044107	Hamilton City	\$257,651.60
044818	Springfield City School District	\$243,386.19
046110	Lakota Local	\$229,374.95
044644	Piqua City	\$225,719.40
049650	Washington-Nile Local	\$211,895.16
044263	Lorain City	\$208,521.48
044800	South-Western City	\$208,359.49
045047	Westerville City	\$188,761.65
044669	Portsmouth City	\$186,713.03
044081	Winton Woods City	\$186,256.70
044891	Tiffin City	\$185,528.50
047340	Forest Hills Local	\$183,104.79
047019	Hilliard City	\$181,178.83
047381	Southwest Local	\$173,316.47

IRN	Public District	Total State Funding
043943	Elyria City Schools	\$160,633.12
044016	Fremont City	\$158,472.02
048728	Northmont City	\$156,028.49
045021	Wellston City	\$146,553.79
043950	Euclid City	\$137,766.20
043877	Delaware City	\$134,969.47
044974	Wadsworth City	\$127,357.80
045104	Willoughby-Eastlake City	\$123,517.22
044776	Shelby City	\$118,438.91
045500	Milford Exempted Village	\$117,058.90
044750	Shaker Heights City	\$115,521.28
044743	Sandusky City	\$114,732.93
044719	St Bernard-Elmwood Place City	\$111,150.40
045773	Elida Local	\$108,485.20
044875	Sylvania Schools	\$107,783.42
046102	Fairfield City	\$104,180.69
044503	North Canton City	\$102,648.88
043638	Bowling Green City School District	\$101,827.83
046961	Gahanna-Jefferson City	\$101,443.53
049866	Lake Local	\$101,325.21
046896	Pickerington Local	\$100,198.16
048348	Poland Local	\$98,079.94
043711	Canton City	\$94,544.19
045583	Perrysburg Exempted Village	\$93,577.68
047332	Finneytown Local	\$92,978.61
044925	Troy City	\$90,819.01
044412	Mt Healthy City	\$89,595.59
048306	Boardman Local	\$89,028.55
046359	West Clermont Local	\$84,251.16
043992	Fostoria City	\$82,773.56
049791	Hardin-Houston Local	\$82,170.62
046763	Olentangy Local	\$82,021.96
046342	Goshen Local	\$81,174.01
044271	Loveland City	\$80,228.65
044511	North College Hill City	\$79,352.39
044206	Lancaster City	\$79,126.87
048231	Washington Local	\$78,758.10
049437	Lexington Local	\$77,372.53
045138	Worthington City	\$76,791.65
050450	Mason City	\$76,509.55
047803	Indian Creek Local	\$76,258.97
048223	Springfield Local	\$74,635.13

IRN	Public District	Total State Funding
045120	Wooster City	\$74,225.45
044826	Steubenville City	\$74,178.19
046300	Batavia Local	\$73,444.43
044305	Maple Heights City	\$73,064.33
044198	Lakewood City	\$72,130.93
044792	South Euclid-Lyndhurst City	\$72,117.75
046060	Western Brown Local	\$71,846.99
048298	Austintown Local Schools	\$70,368.46
043539	Barberton City	\$68,868.33
043836	Cuyahoga Falls City	\$68,070.03
046979	Groveport Madison Local	\$67,915.05
044537	North Ridgeville City	\$65,617.97
044859	Struthers City	\$64,397.92
047894	Riverside Local	\$62,582.62
047027	Dublin City	\$61,510.17
050013	Green Local	\$61,472.33
044388	Medina City SD	\$60,929.18
050062	Springfield Local	\$59,974.17
049635	Northwest Local	\$59,001.72
043869	Defiance City	\$57,958.40
044214	Lebanon City	\$57,441.26
048488	Cloverleaf Local	\$55,275.17
043885	Delphos City	\$55,052.21
045492	Mentor Exempted Village	\$54,808.13
047084	Pike-Delta-York Local	\$54,492.88
045179	Zanesville City	\$54,064.86
043901	East Cleveland City School District	\$53,873.23
048702	Mad River Local	\$53,319.87
048041	Southwest Licking Local	\$53,183.46
043968	Fairborn City	\$52,731.80
044941	Urbana City	\$52,220.77
049882	Marlington Local	\$52,000.83
044602	Oregon City	\$51,640.85
045344	Crestline Exempted Village	\$51,498.72
045534	Mount Gilead Exempted Village	\$51,004.60
043612	Berea City	\$50,838.82
045765	Bath Local	\$50,725.39
048314	Canfield Local	\$50,299.52
047183	Chardon Local	\$49,538.72
045393	Granville Exempted Village	\$49,511.31
045799	Shawnee Local	\$48,636.59
050658	Stryker Local	\$48,066.40

IRN	Public District	Total State Funding
044156	Jackson City	\$47,943.29
049452	Madison Local	\$47,204.47
047225	West Geauga Local	\$45,902.44
044917	Toronto City	\$45,593.10
049544	Zane Trace Local	\$45,018.14
044834	Stow-Munroe Falls City School District	\$45,012.81
044040	Garfield Heights City Schools	\$44,552.40
046250	Northeastern Local	\$44,371.79
044024	Galion City	\$44,285.95
049197	Field Local	\$43,846.30
044842	Strongsville City	\$43,365.17
044545	North Royalton City	\$43,127.83
046326	Clermont Northeastern Local	\$41,962.25
048033	Northridge Local	\$41,845.98
044057	Geneva Area City	\$41,370.42
044578	Norwood City	\$40,969.64
043596	Bellevue City	\$40,911.75
047787	Buckeye Local	\$40,667.31
050443	Little Miami Local	\$40,363.01
047001	Reynoldsburg City	\$39,750.80
048207	Anthony Wayne Local	\$39,592.29
050567	Norwayne Local	\$39,091.59
045096	Willard City	\$38,555.95
046995	New Albany-Plain Local	\$37,951.77
048009	Licking Heights Local	\$37,034.51
043562	Bedford City	\$36,961.22
049999	Coventry Local	\$36,796.78
047993	Lakewood Local	\$36,648.45
049536	Union-Scioto Local	\$36,054.37
045567	Newton Falls Exempted Village	\$35,988.48
045146	Wyoming City	\$35,613.11
048462	Black River Local	\$35,156.24
044099	Greenville City	\$34,619.43
049627	Minford Local	\$33,814.01
043745	Chillicothe City	\$33,727.09
045070	Whitehall City	\$33,616.84
043703	Campbell City	\$33,559.21
043984	Findlay City	\$33,551.35
044362	Maumee City	\$33,509.04
048496	Highland Local	\$33,003.93
046144	Ross Local	\$32,543.14
045153	Xenia Community City	\$32,213.08

IRN	Public District	Total State Funding
049932	Plain Local	\$32,105.18
048025	North Fork Local	\$32,097.59
045005	Warrensville Heights City	\$31,570.17
047399	Three Rivers Local	\$31,370.19
046755	Buckeye Valley Local	\$31,349.94
047241	Beavercreek City	\$31,317.43
046821	Vermilion Local	\$31,172.03
043729	Celina City	\$31,160.40
044883	Tallmadge City	\$30,613.31
049122	Eastern Local School District	\$30,584.55
045625	Upper Sandusky Exempted Village	\$30,574.37
050195	Liberty Local	\$30,503.04
045377	Georgetown Exempted Village	\$30,119.92
049247	Waterloo Local	\$30,094.25
046003	Shadyside Local	\$29,976.61
047050	Evergreen Local	\$29,268.89
045427	Hubbard Exempted Village	\$29,067.92
043505	Ashland City	\$28,794.38
045088	Wickliffe City	\$28,645.78
048876	Tri-Valley Local	\$28,206.26
049700	Hopewell-Loudon Local	\$27,928.46
046805	Margaretta Local	\$27,866.21
049858	Jackson Local	\$26,505.12
044420	Mount Vernon City	\$26,374.09
047589	Liberty Center Local	\$25,892.07
047795	Edison Local	\$25,719.03
050724	Otsego Local	\$25,364.40
049908	Northwest Local	\$25,269.37
139303	Monroe Local	\$25,211.27
047456	McComb Local	\$25,148.31
048926	Benton Carroll Salem Local	\$25,063.72
050070	Twinsburg City	\$25,031.31
045195	Amherst Exempted Village	\$24,761.03
046946	Canal Winchester Local	\$24,685.61
047167	Berkshire Local	\$24,441.57
048686	Jefferson Township Local	\$24,404.73
049668	Wheelersburg Local	\$24,389.60
044065	Girard City School District	\$24,197.38
044693	Reading Community City	\$23,905.83
044164	Kent City	\$23,759.26
044347	Martins Ferry City	\$23,592.72
043554	Beachwood City	\$23,548.09

IRN	Public District	Total State Funding
046243	Tecumseh Local	\$23,360.72
050005	Manchester Local	\$23,281.39
046573	Olmsted Falls City	\$23,066.72
044438	Napoleon Area City	\$23,056.68
050047	Nordonia Hills City	\$22,887.35
044552	Norton City	\$22,731.65
050682	Elmwood Local	\$22,561.25
043570	Bellaire Local	\$22,549.18
047191	Kenston Local	\$21,363.86
044610	Orrville City	\$21,088.79
044958	Vandalia-Butler City	\$20,846.94
048801	Highland Local	\$20,161.78
048132	Clearview Local	\$19,929.53
048793	Cardington-Lincoln Local	\$19,812.79
045476	Marysville Exempted Village	\$19,688.59
048371	Springfield Local	\$19,464.80
046136	New Miami Local	\$19,424.25
050583	Southeast Local	\$19,389.31
050559	Green Local	\$19,159.07
050021	Hudson City	\$19,132.95
046748	Big Walnut Local	\$18,988.29
048017	Licking Valley Local	\$18,780.69
044560	Norwalk City	\$18,738.84
044735	Salem City	\$18,612.05
049205	James A Garfield Local	\$18,601.43
043547	Bay Village City	\$18,496.92
044289	Madeira City	\$18,223.87
044628	Painesville City Local	\$18,123.71
044685	Ravenna City	\$18,058.63
046607	Solon City	\$18,046.65
048470	Buckeye Local	\$17,891.35
050542	Dalton Local	\$17,875.29
045906	Alexander Local	\$17,287.00
045575	Paulding Exempted Village	\$17,228.79
048819	Northmor Local	\$17,200.26
050427	Springboro Community City	\$17,200.23
048942	Genoa Area Local	\$17,093.70
047829	Centerburg Local	\$17,021.99
046193	Graham Local	\$16,934.92
044115	Heath City	\$16,808.48
043687	Bucyrus City	\$16,703.47
043935	Eaton Community City	\$16,450.92

IRN	Public District	Total State Funding
045617	Tipp City Exempted Village	\$16,390.51
044180	Kettering City School District	\$16,363.96
049577	Woodmore Local	\$16,314.11
045609	Rossford Exempted Village	\$16,299.81
043778	Claymont City	\$16,267.99
049080	Logan Elm Local	\$16,260.71
050708	North Baltimore Local	\$16,237.62
047175	Cardinal Local	\$16,195.98
050435	Kings Local	\$15,949.70
049445	Lucas Local	\$15,907.93
044370	Mayfield City	\$15,865.66
048850	Maysville Local	\$15,797.80
050393	Vinton County Local	\$15,726.00
048694	Trotwood-Madison City	\$15,607.73
050286	Indian Valley Local	\$15,580.24
045591	Rittman Exempted Village	\$15,529.16
043646	Brecksville-Broadview Heights City	\$15,433.02
044479	New Lexington School District	\$15,414.65
050633	Millcreek-West Unity Local	\$15,403.80
048389	West Branch Local	\$15,339.42
045955	New Bremen Local	\$15,332.05
049056	Northern Local	\$15,293.40
047886	Madison Local	\$15,213.32
043620	Bexley City	\$15,191.77
046078	Ripley-Union-Lewis-Huntington Local	\$15,155.51
048116	Avon Local	\$15,130.75
048611	Bethel Local	\$15,086.15
050534	Chippewa Local	\$15,071.85
046367	Williamsburg Local	\$14,916.58
043661	Brunswick City	\$14,651.82
049429	Crestview Local	\$14,641.40
046722	Northeastern Local	\$14,598.38
043810	Conneaut Area City	\$14,314.47
045559	New Richmond Exempted Village	\$14,288.00
048322	Jackson-Milton Local	\$14,125.23
050039	Mogadore Local	\$14,013.53
047415	Arcadia Local	\$13,696.94
046953	Hamilton Local	\$13,659.62
044677	Princeton City	\$13,592.41
049478	Ontario Local	\$13,542.26
043851	Deer Park Community City	\$13,232.74
046847	Amanda-Clearcreek Local	\$12,735.71

IRN	Public District	Total State Funding
044651	Port Clinton City	\$12,726.14
044867	Sycamore Community City	\$12,675.39
045286	Chagrin Falls Exempted Village	\$12,628.05
046201	Triad Local	\$12,589.14
046284	Clark-Shawnee Local	\$12,400.54
048835	East Muskingum Local	\$12,106.67
045880	Pymatuning Valley Local	\$11,942.84
046813	Perkins Local	\$11,748.19
045054	West Carrollton City	\$11,730.57
046581	Orange City	\$11,500.95
044248	Logan-Hocking Local	\$11,363.41
045328	Columbiana Exempted Village	\$11,343.37
043760	Circleville City	\$11,290.81
046151	Talawanda City	\$11,210.80
048124	Avon Lake City	\$11,118.28
045062	Westlake City	\$10,911.83
061903	Adams County Ohio Valley Local	\$10,815.82
044933	Upper Arlington City	\$10,801.81
045369	Fairport Harbor Exempted Village	\$10,667.62
049171	Aurora City	\$10,659.99
049643	Valley Local	\$10,608.71
049395	Pandora-Gilboa Local	\$10,601.23
049098	Teays Valley Local	\$10,556.14
045518	Milton-Union Exempted Village	\$10,395.22
045278	Carrollton Exempted Village	\$10,231.71
047597	Patrick Henry Local	\$10,183.17
049239	Streetsboro City	\$10,067.50
047217	Newbury Local	\$9,936.09
050112	Bristol Local	\$9,791.05
048363	South Range Local	\$9,695.89
044313	Mariemont City	\$9,425.75
048751	Huber Heights City	\$9,235.18
048330	Lowellville Local	\$9,144.20
046045	Fayetteville-Perry Local	\$8,961.75
045229	Bradford Exempted Village	\$8,914.18
046235	Greenon Local	\$8,676.98
046334	Felicity-Franklin Local	\$8,576.66
046037	Eastern Local	\$8,575.95
048520	Meigs Local	\$7,997.42
044008	Franklin City	\$7,971.07
046854	Berne Union Local	\$7,902.82
046888	Liberty Union-Thurston Local	\$7,843.04

IRN	Public District	Total State Funding
047761	Oak Hill Union Local	\$7,772.88
046276	Southeastern Local	\$7,737.09
047092	Swanton Local	\$7,708.68
050740	Mohawk Local	\$7,552.93
049619	Green Local	\$7,515.06
045450	Lisbon Exempted Village	\$7,447.29
050591	Triway Local	\$7,319.45
047688	East Holmes Local	\$7,194.94
044495	Niles City	\$7,150.70
047878	Kirtland Local	\$7,098.60
044396	Miamisburg City	\$7,034.85
048736	Northridge Local	\$7,030.91
046482	River View Local	\$7,024.96
049494	Adena Local	\$6,801.93
048173	Midview Local	\$6,770.66
045302	Clyde-Green Springs Exempted Village	\$6,696.40
047514	Riverdale Local	\$6,681.62
045997	St Clairsville-Richland City	\$6,677.57
050674	Eastwood Local	\$6,651.99
049973	Woodridge Local	\$6,570.13
048595	Fort Recovery Local	\$6,567.27
046474	Ridgewood Local	\$6,529.65
046599	Richmond Heights Local	\$6,472.36
049379	Ottawa-Glandorf Local	\$6,399.12
049775	Fairlawn Local	\$6,390.47
048587	St Henry Consolidated Local	\$6,324.19
046458	United Local	\$6,273.04
049841	Fairless Local	\$6,211.19
049353	Leipsic Local	\$6,116.85
044982	Wapakoneta City	\$6,047.68
049874	Louisville City	\$6,008.55
050575	Northwestern Local	\$6,003.39
050138	Champion Local	\$5,998.49
050245	LaBrae Local	\$5,988.27
048843	Franklin Local	\$5,980.19
050054	Revere Local	\$5,977.92
046508	Buckeye Central Local	\$5,953.30
046219	West Liberty-Salem Local	\$5,893.04
049981	Copley-Fairlawn City	\$5,806.49
045856	Buckeye Local	\$5,738.08
049726	Old Fort Local	\$5,672.29
043497	Alliance City	\$5,654.53

IRN	Public District	Total State Funding
049411	Clear Fork Valley Local	\$5,577.30
045658	Wellington Exempted Village	\$5,390.12
044529	North Olmsted City	\$5,375.55
044701	Rocky River City	\$5,081.63
049924	Perry Local	\$5,076.54
047852	Fredericktown Local	\$5,029.30
046870	Fairfield Union Local	\$5,008.85
045468	Loudonville-Perrysville Exempted Village	\$4,909.55
048652	Switzerland of Ohio Local	\$4,883.98
048157	Firelands Local	\$4,862.28
049213	Rootstown Local	\$4,830.64
045872	Jefferson Area Local	\$4,796.45
047696	West Holmes Local	\$4,611.58
091397	Tri-County North Local	\$4,604.47
045781	Perry Local	\$4,573.54
050369	Lincolnview Local	\$4,478.86
050690	Lake Local	\$4,464.84
048256	Jefferson Local	\$4,421.22
046391	Clinton-Massie Local	\$4,368.36
045823	Hillsdale Local	\$4,264.32
045112	Wilmington City	\$4,149.52
049528	Southeastern Local	\$4,147.97
048421	Pleasant Local	\$4,064.10
049510	Paint Valley Local	\$3,950.60
048165	Keystone Local	\$3,937.44
048629	Miami East Local	\$3,928.22
049601	Clay Local	\$3,905.20
050203	Lordstown Local	\$3,889.12
048884	West Muskingum Local	\$3,851.36
048074	Benjamin Logan Local	\$3,518.44
044768	Sheffield-Sheffield Lake City	\$3,511.43
047845	East Knox Local	\$3,427.80
050153	Mathews Local	\$3,387.59
047571	Holgate Local	\$3,330.80
047266	Greeneview Local	\$3,298.79
050237	Southington Local	\$3,163.68
043976	Fairview Park City	\$3,115.41
045435	Indian Hill Exempted Village	\$3,098.78
048140	Columbia Local	\$3,089.77
048272	Madison-Plains Local	\$2,949.17
045674	Yellow Springs Exempted Village	\$2,730.41
045336	Covington Exempted Village	\$2,715.52

IRN	Public District	Total State Funding
049783	Fort Loramie Local	\$2,655.59
046094	Edgewood City	\$2,502.99
043893	Dover City	\$2,481.85
049106	Westfall Local	\$2,204.46
044131	Huron City Schools	\$2,042.89
046565	Independence Local	\$1,955.57
048215	Ottawa Hills Local	\$1,954.13
050328	Fairbanks Local	\$1,807.03
046862	Bloom-Carroll Local	\$1,529.66
049833	Canton Local	\$1,465.87
043653	Brooklyn City	\$1,461.67
046425	Beaver Local	\$1,283.48
047902	Perry Local	\$1,185.00
048934	Danbury Local	\$867.42
044073	Grandview Heights Schools	\$732.37
046557	Cuyahoga Heights Local	\$564.53
047068	Fayette Local	\$0.00
047076	Pettisville Local	\$0.00
050252	Weathersfield Local	\$0.00

Appendix F. Full-Year Program Enrollment by Resident District

IRN	District	1 Year	2 Years	3 Years	4 Years	5 Years
061903	Adams County Ohio Valley Local					
049494	Adena Local					
043489	Akron City	19	10	10	<10	<10
045906	Alexander Local					
043497	Alliance City					
046847	Amanda-Clearcreek Local			<10		
045195	Amherst Exempted Village	<10		<10		
048207	Anthony Wayne Local	<10	<10	<10		<10
047415	Arcadia Local					
043505	Ashland City	<10		<10		<10
043513	Ashtabula Area City	<10	<10	<10	<10	<10
049171	Aurora City		<10		<10	<10
048298	Austintown Local Schools		<10	<10	<10	
048124	Avon Lake City	<10	<10	<10		
048116	Avon Local	<10	<10	<10		
043539	Barberton City	<10	<10	<10		<10

IRN	District	1 Year	2 Years	3 Years	4 Years	5 Years
046300	Batavia Local	<10				
045765	Bath Local		<10	<10		
043547	Bay Village City		<10	<10		
043554	Beachwood City	<10	<10	<10	<10	<10
046425	Beaver Local					
047241	Beavercreek City	<10	13		<10	
043562	Bedford City	<10	<10			
043570	Bellaire Local	<10				
043596	Bellevue City	<10	<10			
048074	Benjamin Logan Local					
048926	Benton Carroll Salem Local	<10		<10	<10	
043612	Berea City	<10	<10	<10	<10	
047167	Berkshire Local	<10	<10	<10		
046854	Berne Union Local	<10				
048611	Bethel Local			<10	<10	
043620	Bexley City	<10	<10	<10		
046748	Big Walnut Local	<10	<10	<10		
048462	Black River Local	<10			<10	
046862	Bloom-Carroll Local					
048306	Boardman Local	<10	<10	10	<10	
043638	Bowling Green City School District	<10	<10	<10	<10	<10
045229	Bradford Exempted Village					
043646	Brecksville-Broadview Heights City	<10	<10	<10		<10
050112	Bristol Local					
043653	Brooklyn City	<10				
043661	Brunswick City	<10	<10	<10		
046508	Buckeye Central Local			<10		
045856	Buckeye Local				<10	
047787	Buckeye Local	<10		<10		<10
048470	Buckeye Local	<10				<10
046755	Buckeye Valley Local	<10	<10	<10		
043687	Bucyrus City	<10				
043703	Campbell City			<10		<10
046946	Canal Winchester Local		<10			
048314	Canfield Local	<10	<10	<10	<10	
043711	Canton City	<10	<10	<10	<10	
049833	Canton Local					

IRN	District	1 Year	2 Years	3 Years	4 Years	5 Years
047175	Cardinal Local	<10	<10			<10
048793	Cardington-Lincoln Local	<10		<10	<10	
045278	Carrollton Exempted Village			<10		
043729	Celina City	<10	<10			
047829	Centerburg Local	<10		<10		
045286	Chagrin Falls Exempted Village	<10	<10	<10		
050138	Champion Local		<10			
047183	Chardon Local	<10	<10	<10	<10	
043745	Chillicothe City	<10	<10			
050534	Chippewa Local					
043752	Cincinnati City	56	39	27	28	42
043760	Circleville City	<10	<10			
046284	Clark-Shawnee Local		<10		<10	
049601	Clay Local					
043778	Claymont City					
049411	Clear Fork Valley Local	<10				
048132	Clearview Local		<10			
046326	Clermont Northeastern Local	<10	<10	<10		<10
043794	Cleveland Heights-University Heights City	40	17	18	15	12
043786	Cleveland Municipal	53	29	29	20	<10
046391	Clinton-Massie Local		<10			
048488	Cloverleaf Local	<10	<10	<10		<10
045302	Clyde-Green Springs Exempted Village	<10				
048140	Columbia Local	<10				
045328	Columbiana Exempted Village					
043802	Columbus City School District	28	21	21	<10	<10
043810	Conneaut Area City				<10	<10
049981	Copley-Fairlawn City		<10			<10
049999	Coventry Local		<10	<10		<10
045336	Covington Exempted Village					
045344	Crestline Exempted Village	<10	<10			
049429	Crestview Local	<10				
043836	Cuyahoga Falls City	<10		<10	<10	
046557	Cuyahoga Heights Local					
050542	Dalton Local	<10		<10		
048934	Danbury Local				<10	
043844	Dayton City	18	23	<10	<10	

IRN	District	1 Year	2 Years	3 Years	4 Years	5 Years
043851	Deer Park Community City	<10			<10	<10
043869	Defiance City					<10
043877	Delaware City	<10	<10	<10	<10	<10
043885	Delphos City	<10	<10	<10	<10	<10
043893	Dover City		<10			
047027	Dublin City	<10	<10	<10	<10	<10
043901	East Cleveland City School District		<10	<10		
047688	East Holmes Local		<10			
047845	East Knox Local				<10	
048835	East Muskingum Local	<10			<10	
046037	Eastern Local	<10				
049122	Eastern Local School District		<10			
050674	Eastwood Local				<10	
043935	Eaton Community City				<10	
046094	Edgewood City					
047795	Edison Local		<10			
045773	Elida Local	<10	<10	<10	<10	<10
050682	Elmwood Local			<10		<10
043943	Elyria City Schools	11	<10	<10		<10
043950	Euclid City	<10	<10	<10	<10	
047050	Evergreen Local	<10		<10		
050328	Fairbanks Local					
043968	Fairborn City	<10	<10	<10	<10	
046102	Fairfield City	<10	<10	<10	<10	<10
046870	Fairfield Union Local	<10				
049775	Fairlawn Local	<10				
049841	Fairless Local			<10		
045369	Fairport Harbor Exempted Village	<10				
043976	Fairview Park City					
047068	Fayette Local	<10				
046045	Fayetteville-Perry Local					
046334	Felicity-Franklin Local	<10				
049197	Field Local	<10		<10	<10	
043984	Findlay City	<10		<10		
047332	Finneytown Local	<10	<10	<10	<10	<10
048157	Firelands Local					
047340	Forest Hills Local	<10	13	<10	<10	<10

IRN	District	1 Year	2 Years	3 Years	4 Years	5 Years
049783	Fort Loramie Local					
048595	Fort Recovery Local				<10	
043992	Fostoria City	<10				
044008	Franklin City		<10			
048843	Franklin Local				<10	
047852	Fredericktown Local	<10				
044016	Fremont City	<10	<10		<10	<10
046961	Gahanna-Jefferson City	<10	21	<10		<10
044024	Galion City	<10				
044040	Garfield Heights City Schools	<10		<10		
044057	Geneva Area City		<10			
048942	Genoa Area Local	<10		<10		
045377	Georgetown Exempted Village	<10				
044065	Girard City School District		<10	<10		
046342	Goshen Local	<10			<10	
046193	Graham Local			<10		
044073	Grandview Heights Schools					
045393	Granville Exempted Village		<10	<10	<10	<10
049619	Green Local	<10				
050013	Green Local	<10	<10	<10	<10	<10
050559	Green Local	<10				
047266	Greeneview Local					
046235	Greenon Local			<10		
044099	Greenville City	<10				
046979	Groveport Madison Local	<10				
044107	Hamilton City	<10	<10	<10	<10	<10
046953	Hamilton Local	<10				
049791	Hardin-Houston Local	<10	<10		<10	<10
044115	Heath City	<10	<10			
048496	Highland Local	<10	<10		<10	<10
048801	Highland Local				<10	
047019	Hilliard City	<10	<10	10	<10	<10
045823	Hillsdale Local					
047571	Holgate Local					
049700	Hopewell-Loudon Local	<10			<10	
045427	Hubbard Exempted Village	<10	<10			
048751	Huber Heights City			<10		

IRN	District	1 Year	2 Years	3 Years	4 Years	5 Years
050021	Hudson City	<10		<10		
044131	Huron City Schools				<10	
046565	Independence Local	<10			<10	<10
047803	Indian Creek Local	<10	<10		<10	<10
045435	Indian Hill Exempted Village		<10	<10		<10
050286	Indian Valley Local					
044156	Jackson City	<10				
049858	Jackson Local	<10		<10		<10
048322	Jackson-Milton Local			<10		
049205	James A Garfield Local					
045872	Jefferson Area Local		<10			
048256	Jefferson Local			<10		
048686	Jefferson Township Local	<10	<10			
047191	Kenston Local	<10	<10	<10	<10	
044164	Kent City	<10				
044180	Kettering City School District		<10		<10	
048165	Keystone Local	<10				
050435	Kings Local	<10				
047878	Kirtland Local	<10	<10	<10	<10	<10
050245	LaBrae Local					
049866	Lake Local		<10	<10	<10	<10
050690	Lake Local	<10				
044198	Lakewood City	<10	<10	<10		
047993	Lakewood Local		<10		<10	
046110	Lakota Local	16	<10	<10	<10	<10
044206	Lancaster City	<10	<10	<10		
044214	Lebanon City	<10	<10		<10	
049353	Leipsic Local					
049437	Lexington Local	<10	<10	<10		<10
047589	Liberty Center Local					
050195	Liberty Local	<10	<10	<10		
046888	Liberty Union-Thurston Local					
048009	Licking Heights Local	<10	<10		<10	
048017	Licking Valley Local		<10			
044222	Lima City	<10	<10		<10	
050369	Lincolnview Local					
045450	Lisbon Exempted Village					

IRN	District	1 Year	2 Years	3 Years	4 Years	5 Years
050443	Little Miami Local		<10	<10	<10	<10
049080	Logan Elm Local		<10			
044248	Logan-Hocking Local		<10			
044263	Lorain City	<10	<10	<10		
050203	Lordstown Local	<10				
045468	Loudonville-Perrysville Exempted Village					
049874	Louisville City	<10				
044271	Loveland City		<10	<10	<10	<10
048330	Lowellville Local			<10		
049445	Lucas Local			<10		
048702	Mad River Local	<10	<10	<10		
044289	Madeira City		<10	<10	<10	<10
047886	Madison Local	<10	<10	<10		
049452	Madison Local	<10	<10	<10		
048272	Madison-Plains Local					<10
050005	Manchester Local	<10	<10			
044297	Mansfield City	<10	<10	<10	10	<10
044305	Maple Heights City	<10	<10			
046805	Margaretta Local	<10	<10			
044313	Mariemont City			<10		
049882	Marlington Local	<10				<10
044347	Martins Ferry City	<10				
045476	Marysville Exempted Village			<10		
050450	Mason City	<10	<10	<10		<10
050153	Mathews Local					
044362	Maumee City	<10	<10	<10	<10	<10
044370	Mayfield City	<10	<10	<10	<10	<10
048850	Maysville Local					
047456	McComb Local	<10	<10			
044388	Medina City SD	<10	<10	<10	<10	
048520	Meigs Local					
045492	Mentor Exempted Village	<10	<10	<10	<10	<10
048629	Miami East Local				<10	
044396	Miamisburg City	<10				
048173	Midview Local				<10	<10
045500	Milford Exempted Village	<10	<10	<10	<10	<10
050633	Millcreek-West Unity Local	<10				

IRN	District	1 Year	2 Years	3 Years	4 Years	5 Years
045518	Milton-Union Exempted Village		<10	<10		
049627	Minford Local	<10		<10		
050039	Mogadore Local	<10				<10
050740	Mohawk Local	<10		<10		
139303	Monroe Local	<10	<10	<10	<10	
045534	Mount Gilead Exempted Village		<10	<10	<10	
044420	Mount Vernon City	<10		<10	<10	
044412	Mt Healthy City	<10	<10	<10	<10	<10
044438	Napoleon Area City	<10	<10			
046995	New Albany-Plain Local	<10	<10	<10	<10	<10
045955	New Bremen Local	<10				
044479	New Lexington School District					
046136	New Miami Local			<10		
045559	New Richmond Exempted Village	<10	<10			<10
044453	Newark City	<10	<10	<10	<10	
047217	Newbury Local	<10	<10		<10	
045567	Newton Falls Exempted Village		<10	<10		
044495	Niles City			<10		
050047	Nordonia Hills City	<10			<10	<10
050708	North Baltimore Local		<10			
044503	North Canton City	<10	<10	<10		
044511	North College Hill City		<10	<10		<10
048025	North Fork Local		<10	<10	<10	
044529	North Olmsted City	<10				
044537	North Ridgeville City	<10	<10	<10	<10	<10
044545	North Royalton City	<10	<10	<10	<10	
046250	Northeastern Local	<10	<10			
046722	Northeastern Local	<10		<10		
049056	Northern Local			<10		
048728	Northmont City	<10	<10	<10	<10	
048819	Northmor Local	<10				
048033	Northridge Local	<10	<10			
048736	Northridge Local					
047365	Northwest Local	14	17	26	11	20
049635	Northwest Local	<10	<10			
049908	Northwest Local	<10		<10		
050575	Northwestern Local		<10			

IRN	District	1 Year	2 Years	3 Years	4 Years	5 Years
044552	Norton City	<10			<10	<10
044560	Norwalk City	<10	<10			
050567	Norwayne Local	<10	<10			<10
044578	Norwood City	<10		<10		<10
047761	Oak Hill Union Local					
047373	Oak Hills Local	20	<10	12	12	26
049726	Old Fort Local					
046763	Olentangy Local	<10	10	<10	<10	<10
046573	Olmsted Falls City				<10	
049478	Ontario Local			<10		
046581	Orange City	<10	<10		<10	<10
044602	Oregon City	<10	<10			
044610	Orrville City	<10		<10		
050724	Otsego Local	<10	<10	<10		
048215	Ottawa Hills Local					
049379	Ottawa-Glandorf Local					
044628	Painesville City Local	<10				
049510	Paint Valley Local					
049395	Pandora-Gilboa Local	<10			<10	
044636	Parma City	<10	<10	<10	<10	<10
047597	Patrick Henry Local		<10			
045575	Paulding Exempted Village	<10				
046813	Perkins Local	<10		<10	<10	
045781	Perry Local					
047902	Perry Local	<10				
049924	Perry Local		<10			
045583	Perrysburg Exempted Village	<10	<10	<10	<10	<10
047076	Pettisville Local			<10		
046896	Pickerington Local	<10	<10		<10	<10
047084	Pike-Delta-York Local	<10	<10			
044644	Piqua City		<10	<10	<10	<10
049932	Plain Local			<10		<10
048421	Pleasant Local		<10			
048348	Poland Local	<10	<10	<10	<10	<10
044651	Port Clinton City	<10		<10	<10	
044669	Portsmouth City	10	<10	<10		
044677	Princeton City	<10	<10	<10	<10	<10

IRN	District	1 Year	2 Years	3 Years	4 Years	5 Years
045880	Pymatuning Valley Local					
044685	Ravenna City		<10			<10
044693	Reading Community City	<10	<10			
050054	Revere Local	<10				<10
047001	Reynoldsburg City	<10				
046599	Richmond Heights Local	<10	<10			<10
046474	Ridgewood Local					
046078	Ripley-Union-Lewis-Huntington Local		<10		<10	
045591	Rittman Exempted Village	<10			<10	
046482	River View Local					
047514	Riverdale Local					
047894	Riverside Local	10	<10	<10	<10	<10
044701	Rocky River City	<10		<10		
049213	Rootstown Local		<10			
046144	Ross Local				<10	<10
045609	Rossford Exempted Village	<10	<10			
044735	Salem City	<10		<10		<10
044743	Sandusky City		<10	<10		<10
046003	Shadyside Local	<10			<10	
044750	Shaker Heights City	<10	<10	<10	<10	
045799	Shawnee Local	<10			<10	<10
044768	Sheffield-Sheffield Lake City		<10			
044776	Shelby City	<10	<10	<10		<10
044784	Sidney City	<10	<10	<10	13	<10
046607	Solon City	<10	<10		<10	<10
044792	South Euclid-Lyndhurst City	<10	<10	<10	<10	<10
048363	South Range Local			<10	<10	
050583	Southeast Local	<10	<10	<10		
046276	Southeastern Local		<10			
049528	Southeastern Local					
050237	Southington Local					
048041	Southwest Licking Local	<10	<10		<10	
047381	Southwest Local	<10		<10	<10	10
044800	South-Western City	<10	<10	<10	<10	
050427	Springboro Community City	<10				
044818	Springfield City School District	<10	<10		<10	<10
048223	Springfield Local	<10	<10	<10	<10	<10

IRN	District	1 Year	2 Years	3 Years	4 Years	5 Years
048371	Springfield Local	<10			<10	
050062	Springfield Local	<10	<10	<10	<10	<10
044719	St Bernard-Elmwood Place City	<10	<10		<10	<10
045997	St Clairsville-Richland City					<10
048587	St Henry Consolidated Local					
044826	Steubenville City	<10	<10	<10		<10
044834	Stow-Munroe Falls City School District	<10	<10	<10	<10	<10
049239	Streetsboro City					
044842	Strongsville City	<10	<10	<10	<10	<10
044859	Struthers City	<10				
050658	Stryker Local			<10		
047092	Swanton Local	<10				
048652	Switzerland of Ohio Local			<10		
044867	Sycamore Community City	<10		<10	<10	
044875	Sylvania Schools	<10	<10	<10	<10	<10
046151	Talawanda City	<10				<10
044883	Tallmadge City	<10	<10	<10		<10
049098	Teays Valley Local					
046243	Tecumseh Local				<10	
047399	Three Rivers Local	<10	<10	<10	<10	<10
044891	Tiffin City	<10	<10	<10	<10	
045617	Tipp City Exempted Village	<10				
044909	Toledo City	24	21	<10	10	<10
044917	Toronto City			<10	<10	
046201	Triad Local					
091397	Tri-County North Local	<10				
048876	Tri-Valley Local			<10	<10	
050591	Triway Local	<10				
048694	Trotwood-Madison City	<10		<10		
044925	Troy City	<10	<10			<10
050070	Twinsburg City	<10	<10	<10	<10	
049536	Union-Scioto Local					
046458	United Local			<10		
044933	Upper Arlington City	<10	<10	<10		<10
045625	Upper Sandusky Exempted Village	<10	<10			
044941	Urbana City		<10		<10	
049643	Valley Local			<10		

IRN	District	1 Year	2 Years	3 Years	4 Years	5 Years
044958	Vandalia-Butler City	<10	<10	<10	<10	
046821	Vermilion Local	<10	<10	<10	<10	<10
050393	Vinton County Local	<10				
044974	Wadsworth City	<10	<10	<10	<10	<10
044982	Wapakoneta City	<10				
045005	Warrensville Heights City	<10	<10	<10	<10	
048231	Washington Local	<10	<10	<10		
049650	Washington-Nile Local	<10		<10		
049247	Waterloo Local			<10	<10	<10
045641	Wauseon Exempted Village	<10	<10	12		
050252	Weathersfield Local			<10		
045658	Wellington Exempted Village	<10				
045021	Wellston City	<10	<10	<10		
048389	West Branch Local		<10			
045054	West Carrollton City	<10			<10	
046359	West Clermont Local	<10	<10	<10		<10
047225	West Geauga Local	<10	<10	<10	<10	<10
047696	West Holmes Local					
046219	West Liberty-Salem Local				<10	
048884	West Muskingum Local	<10				
046060	Western Brown Local	<10				<10
045047	Westerville City	10	10	<10	<10	<10
049106	Westfall Local					
045062	Westlake City	<10	<10	<10		
049668	Wheelersburg Local					
045070	Whitehall City		<10			
045088	Wickliffe City	<10		<10		
045096	Willard City	<10	<10	<10	<10	<10
046367	Williamsburg Local	<10				
045104	Willoughby-Eastlake City	<10	<10	10	<10	<10
045112	Wilmington City		<10			
044081	Winton Woods City	<10	<10	<10	<10	<10
049577	Woodmore Local		<10			
049973	Woodridge Local			<10		
045120	Wooster City	<10		<10	<10	
045138	Worthington City	<10	<10	<10	<10	<10
045146	Wyoming City	<10	<10			

IRN	District	1 Year	2 Years	3 Years	4 Years	5 Years
045153	Xenia Community City	<10	<10			
045674	Yellow Springs Exempted Village	<10				
045161	Youngstown City	21	10	22	<10	14
049544	Zane Trace Local	<10				
045179	Zanesville City	<10	<10		<10	

Appendix G. Half-Year Program Enrollment by Resident District

IRN	District	0.5 Year	1.5 Years	2.5 Years	3.5 Years	4.5 Years
061903	Adams County Ohio Valley Local	<10				
049494	Adena Local		<10			
043489	Akron City	12	14	16	<10	<10
045906	Alexander Local			<10		
043497	Alliance City		<10			
046847	Amanda-Clearcreek Local	<10				
045195	Amherst Exempted Village	<10	<10			<10
048207	Anthony Wayne Local	<10		<10		
047415	Arcadia Local	<10			<10	
043505	Ashland City		<10			
043513	Ashtabula Area City	<10	<10	<10	<10	
049171	Aurora City	<10		<10		
048298	Austintown Local Schools		<10	<10	<10	
048124	Avon Lake City	<10		<10		
048116	Avon Local	<10		<10		
043539	Barberton City	<10				
046300	Batavia Local		<10			
045765	Bath Local	<10	<10			
043547	Bay Village City	<10		<10		<10
043554	Beachwood City	<10	<10	<10	<10	<10
046425	Beaver Local		<10			
047241	Beavercreek City					
043562	Bedford City		<10		<10	
043570	Bellaire Local			<10		
043596	Bellevue City	<10	<10			
048074	Benjamin Logan Local				<10	

IRN	District	0.5 Year	1.5 Years	2.5 Years	3.5 Years	4.5 Years
048926	Benton Carroll Salem Local					<10
043612	Berea City	<10	<10	<10		<10
047167	Berkshire Local	<10				
046854	Berne Union Local		<10			
048611	Bethel Local					
043620	Bexley City	<10		<10		
046748	Big Walnut Local	<10	<10	<10		
048462	Black River Local		<10	<10		
046862	Bloom-Carroll Local	<10				
048306	Boardman Local	<10		<10		<10
043638	Bowling Green City School District	<10	<10	<10		<10
045229	Bradford Exempted Village		<10			
043646	Brecksville-Broadview Heights City		<10	<10	<10	<10
050112	Bristol Local		<10			
043653	Brooklyn City					
043661	Brunswick City					
046508	Buckeye Central Local					
045856	Buckeye Local	<10				
047787	Buckeye Local	<10			<10	
048470	Buckeye Local	<10	<10			
046755	Buckeye Valley Local	<10	<10			<10
043687	Bucyrus City					
043703	Campbell City					
046946	Canal Winchester Local	<10	<10			<10
048314	Canfield Local	<10	<10	<10		
043711	Canton City	<10			<10	
049833	Canton Local		<10			
047175	Cardinal Local	<10	<10			
048793	Cardington-Lincoln Local					
045278	Carrollton Exempted Village					
043729	Celina City	<10	<10			
047829	Centerburg Local		<10			
045286	Chagrin Falls Exempted Village	<10	<10	<10		
050138	Champion Local					
047183	Chardon Local	<10	<10	<10	<10	<10
043745	Chillicothe City		<10			

IRN	District	0.5 Year	1.5 Years	2.5 Years	3.5 Years	4.5 Years
050534	Chippewa Local	<10	<10	<10		
043752	Cincinnati City	24	30	24	17	10
043760	Circleville City					
046284	Clark-Shawnee Local		<10			
049601	Clay Local	<10				
043778	Claymont City		<10			
049411	Clear Fork Valley Local					
048132	Clearview Local					
046326	Clermont Northeastern Local	<10				
043794	Cleveland Heights-University Heights City	16	15	16	<10	<10
043786	Cleveland Municipal	18	12	10	<10	<10
046391	Clinton-Massie Local					
048488	Cloverleaf Local	<10	<10		<10	
045302	Clyde-Green Springs Exempted Village					
048140	Columbia Local					
045328	Columbiana Exempted Village			<10		<10
043802	Columbus City School District	21	31	<10	<10	<10
043810	Conneaut Area City					
049981	Copley-Fairlawn City	<10	<10	<10		
049999	Coventry Local		<10	<10		
045336	Covington Exempted Village		<10			
045344	Crestline Exempted Village	<10	<10			
049429	Crestview Local					
043836	Cuyahoga Falls City	<10	<10			<10
046557	Cuyahoga Heights Local		<10			
050542	Dalton Local		<10			
048934	Danbury Local					
043844	Dayton City	<10	<10	<10		
043851	Deer Park Community City					
043869	Defiance City	<10		<10		
043877	Delaware City		<10	<10		<10
043885	Delphos City	<10	<10			<10
043893	Dover City					
047027	Dublin City	<10	<10	<10	<10	<10
043901	East Cleveland City School District	<10	<10	<10		

IRN	District	0.5 Year	1.5 Years	2.5 Years	3.5 Years	4.5 Years
047688	East Holmes Local	<10				
047845	East Knox Local					
048835	East Muskingum Local					
046037	Eastern Local					
049122	Eastern Local School District	<10	<10			
050674	Eastwood Local	<10				
043935	Eaton Community City					
046094	Edgewood City	<10				
047795	Edison Local		<10			<10
045773	Elida Local		<10	<10		
050682	Elmwood Local				<10	
043943	Elyria City Schools	<10	<10			
043950	Euclid City	<10	<10	<10	<10	<10
047050	Evergreen Local		<10			
050328	Fairbanks Local		<10			
043968	Fairborn City			<10		
046102	Fairfield City	<10	<10	<10	<10	<10
046870	Fairfield Union Local					
049775	Fairlawn Local					
049841	Fairless Local					
045369	Fairport Harbor Exempted Village	<10				
043976	Fairview Park City		<10			
047068	Fayette Local					
046045	Fayetteville-Perry Local	<10				
046334	Felicity-Franklin Local					
049197	Field Local		<10			
043984	Findlay City		<10		<10	
047332	Finneytown Local			<10	<10	
048157	Firelands Local		<10			
047340	Forest Hills Local	<10	<10	<10	<10	<10
049783	Fort Loramie Local	<10				
048595	Fort Recovery Local					
043992	Fostoria City	<10		<10		
044008	Franklin City		<10			
048843	Franklin Local					
047852	Fredericktown Local					

IRN	District	0.5 Year	1.5 Years	2.5 Years	3.5 Years	4.5 Years
044016	Fremont City	<10	<10			<10
046961	Gahanna-Jefferson City	<10	<10	<10	<10	
044024	Galion City	<10			<10	
044040	Garfield Heights City Schools		<10	<10	<10	<10
044057	Geneva Area City	<10	<10	<10		
048942	Genoa Area Local					
045377	Georgetown Exempted Village	<10				
044065	Girard City School District			<10		
046342	Goshen Local					
046193	Graham Local		<10			
044073	Grandview Heights Schools		<10			
045393	Granville Exempted Village	<10	<10	<10		<10
049619	Green Local					
050013	Green Local	<10	<10		<10	
050559	Green Local		<10	<10		
047266	Greeneview Local		<10			
046235	Greenon Local				<10	
044099	Greenville City			<10	<10	
046979	Groveport Madison Local	<10	<10	<10	<10	
044107	Hamilton City	<10	<10	<10	<10	<10
046953	Hamilton Local		<10			
049791	Hardin-Houston Local		<10	<10	<10	
044115	Heath City	<10				
048496	Highland Local	<10	<10	<10		
048801	Highland Local			<10		
047019	Hilliard City	<10	<10	<10	<10	<10
045823	Hillsdale Local				<10	
047571	Holgate Local	<10	<10			
049700	Hopewell-Loudon Local		<10			<10
045427	Hubbard Exempted Village			<10	<10	
048751	Huber Heights City	<10				
050021	Hudson City	<10	<10	<10		<10
044131	Huron City Schools					
046565	Independence Local					
047803	Indian Creek Local		<10	<10	<10	
045435	Indian Hill Exempted Village		<10			<10

IRN	District	0.5 Year	1.5 Years	2.5 Years	3.5 Years	4.5 Years
050286	Indian Valley Local					<10
044156	Jackson City	<10				
049858	Jackson Local	<10				<10
048322	Jackson-Milton Local					
049205	James A Garfield Local		<10			
045872	Jefferson Area Local					
048256	Jefferson Local					
048686	Jefferson Township Local		<10			
047191	Kenston Local	<10	<10	<10	<10	<10
044164	Kent City	<10		<10		
044180	Kettering City School District		<10			
048165	Keystone Local		<10			
050435	Kings Local	<10				<10
047878	Kirtland Local			<10		<10
050245	LaBrae Local		<10			
049866	Lake Local	<10			<10	<10
050690	Lake Local					
044198	Lakewood City	<10	<10	<10	<10	
047993	Lakewood Local		<10	<10		
046110	Lakota Local	<10	<10	<10	<10	<10
044206	Lancaster City	<10	<10	<10	<10	
044214	Lebanon City		<10		<10	
049353	Leipsic Local			<10		
049437	Lexington Local	<10	<10			
047589	Liberty Center Local			<10	<10	
050195	Liberty Local	<10		<10		
046888	Liberty Union-Thurston Local	<10				<10
048009	Licking Heights Local	<10	<10			
048017	Licking Valley Local					
044222	Lima City	<10	<10	<10		<10
050369	Lincolnview Local					<10
045450	Lisbon Exempted Village				<10	
050443	Little Miami Local		<10			<10
049080	Logan Elm Local	<10			<10	
044248	Logan-Hocking Local					
044263	Lorain City		<10	<10	<10	

IRN	District	0.5 Year	1.5 Years	2.5 Years	3.5 Years	4.5 Years
050203	Lordstown Local	<10				
045468	Loudonville-Perrysville Exempted Village		<10			
049874	Louisville City					
044271	Loveland City	<10	<10	<10	<10	<10
048330	Lowellville Local					
049445	Lucas Local					
048702	Mad River Local		<10			
044289	Madeira City	<10			<10	
047886	Madison Local					
049452	Madison Local	<10			<10	
048272	Madison-Plains Local					
050005	Manchester Local					
044297	Mansfield City	<10	<10	<10	<10	<10
044305	Maple Heights City		<10			<10
046805	Margaretta Local	<10	<10		<10	<10
044313	Mariemont City	<10		<10		
049882	Marlington Local	<10	<10		<10	
044347	Martins Ferry City	<10	<10		<10	
045476	Marysville Exempted Village		<10			
050450	Mason City	<10	<10	<10		
050153	Mathews Local		<10			
044362	Maumee City	<10				
044370	Mayfield City	<10		<10		<10
048850	Maysville Local			<10		
047456	McComb Local			<10		
044388	Medina City SD	<10	<10		<10	<10
048520	Meigs Local			<10		
045492	Mentor Exempted Village	<10		<10	<10	
048629	Miami East Local					
044396	Miamisburg City			<10		
048173	Midview Local	<10				
045500	Milford Exempted Village	<10			<10	
050633	Millcreek-West Unity Local					
045518	Milton-Union Exempted Village					
049627	Minford Local	<10				

IRN	District	0.5 Year	1.5 Years	2.5 Years	3.5 Years	4.5 Years
050039	Mogadore Local					
050740	Mohawk Local					
139303	Monroe Local				<10	<10
045534	Mount Gilead Exempted Village	<10		<10		
044420	Mount Vernon City		<10			
044412	Mt Healthy City	<10		<10		
044438	Napoleon Area City					
046995	New Albany-Plain Local	<10	<10		<10	
045955	New Bremen Local					
044479	New Lexington School District	<10	<10			
046136	New Miami Local					<10
045559	New Richmond Exempted Village	<10	<10			
044453	Newark City	10	<10		<10	
047217	Newbury Local		<10			
045567	Newton Falls Exempted Village					
044495	Niles City					
050047	Nordonia Hills City	<10	<10	<10	<10	<10
050708	North Baltimore Local			<10		
044503	North Canton City	<10	<10		<10	
044511	North College Hill City		<10			
048025	North Fork Local	<10	<10			
044529	North Olmsted City			<10		
044537	North Ridgeville City	<10	<10		<10	
044545	North Royalton City	<10	<10	<10	<10	
046250	Northeastern Local	<10				<10
046722	Northeastern Local				<10	
049056	Northern Local	<10		<10		
048728	Northmont City	<10		<10	<10	
048819	Northmor Local		<10			
048033	Northridge Local	<10	<10	<10	<10	
048736	Northridge Local		<10			
047365	Northwest Local	<10	<10	<10	<10	<10
049635	Northwest Local	<10	<10			
049908	Northwest Local	<10	<10			
050575	Northwestern Local					
044552	Norton City			<10		

IRN	District	0.5 Year	1.5 Years	2.5 Years	3.5 Years	4.5 Years
044560	Norwalk City	<10	<10			
050567	Norwayne Local		<10			
044578	Norwood City		<10	<10		<10
047761	Oak Hill Union Local				<10	
047373	Oak Hills Local	<10	<10	<10	<10	<10
049726	Old Fort Local					<10
046763	Olentangy Local	<10	<10	<10	<10	<10
046573	Olmsted Falls City	<10				
049478	Ontario Local			<10	<10	
046581	Orange City	<10	<10	<10	<10	
044602	Oregon City	<10	<10			
044610	Orrville City	<10	<10			
050724	Otsego Local					
048215	Ottawa Hills Local	<10				
049379	Ottawa-Glandorf Local	<10			<10	
044628	Painesville City Local	<10				
049510	Paint Valley Local	<10				
049395	Pandora-Gilboa Local					
044636	Parma City	15	<10	<10	<10	<10
047597	Patrick Henry Local					
045575	Paulding Exempted Village					
046813	Perkins Local	<10	<10			
045781	Perry Local	<10				
047902	Perry Local					
049924	Perry Local					
045583	Perrysburg Exempted Village	<10		<10		
047076	Pettisville Local					
046896	Pickerington Local	<10	<10	<10	<10	
047084	Pike-Delta-York Local	<10	<10	<10		
044644	Piqua City	<10	<10	<10	<10	<10
049932	Plain Local	<10	<10			<10
048421	Pleasant Local					
048348	Poland Local			<10		
044651	Port Clinton City	<10	<10			
044669	Portsmouth City	<10	<10			
044677	Princeton City		<10		<10	<10

IRN	District	0.5 Year	1.5 Years	2.5 Years	3.5 Years	4.5 Years
045880	Pymatuning Valley Local		<10			
044685	Ravenna City		<10			
044693	Reading Community City	<10				
050054	Revere Local	<10	<10		<10	
047001	Reynoldsburg City		<10	<10	<10	
046599	Richmond Heights Local				<10	
046474	Ridgewood Local	<10				
046078	Ripley-Union-Lewis-Huntington Local					
045591	Rittman Exempted Village					
046482	River View Local		<10		<10	
047514	Riverdale Local	<10				
047894	Riverside Local	<10	<10	<10		
044701	Rocky River City				<10	
049213	Rootstown Local					
046144	Ross Local			<10		<10
045609	Rossford Exempted Village	<10	<10			
044735	Salem City					
044743	Sandusky City	<10	<10	<10	<10	<10
046003	Shadyside Local		<10			
044750	Shaker Heights City	<10	<10	<10	<10	
045799	Shawnee Local		<10		<10	
044768	Sheffield-Sheffield Lake City					
044776	Shelby City		<10	<10	<10	<10
044784	Sidney City	<10	<10	<10	<10	<10
046607	Solon City	<10	<10	<10	<10	
044792	South Euclid-Lyndhurst City	<10		<10	<10	<10
048363	South Range Local					
050583	Southeast Local					
046276	Southeastern Local	<10				
049528	Southeastern Local	<10				
050237	Southington Local	<10				
048041	Southwest Licking Local	<10	<10	<10		
047381	Southwest Local	<10	<10	<10		<10
044800	South-Western City	<10	<10	<10	<10	
050427	Springboro Community City	<10	<10			
044818	Springfield City School District	<10	<10	<10		<10

IRN	District	0.5 Year	1.5 Years	2.5 Years	3.5 Years	4.5 Years
048223	Springfield Local	<10	<10	<10		
048371	Springfield Local			<10		
050062	Springfield Local		<10		<10	<10
044719	St Bernard-Elmwood Place City	<10	<10	<10	<10	
045997	St Clairsville-Richland City					
048587	St Henry Consolidated Local				<10	
044826	Steubenville City	<10	<10	<10		
044834	Stow-Munroe Falls City School District		<10	<10		
049239	Streetsboro City		<10			
044842	Strongsville City	<10	<10	<10	<10	<10
044859	Struthers City	<10	<10			
050658	Stryker Local			<10	<10	
047092	Swanton Local	<10				
048652	Switzerland of Ohio Local					
044867	Sycamore Community City	<10	<10	<10	<10	<10
044875	Sylvania Schools	<10	<10	<10		<10
046151	Talawanda City	<10		<10		
044883	Tallmadge City				<10	
049098	Teays Valley Local	<10	<10			
046243	Tecumseh Local			<10		
047399	Three Rivers Local	<10				
044891	Tiffin City	<10	<10	<10	<10	<10
045617	Tipp City Exempted Village	<10	<10		<10	<10
044909	Toledo City	10	<10	10	<10	
044917	Toronto City			<10		
046201	Triad Local		<10			
091397	Tri-County North Local					
048876	Tri-Valley Local	<10	<10		<10	
050591	Triway Local	<10				
048694	Trotwood-Madison City					
044925	Troy City	<10	<10	<10	<10	<10
050070	Twinsburg City	<10		<10	<10	<10
049536	Union-Scioto Local	<10	<10			
046458	United Local					
044933	Upper Arlington City	<10	<10	<10	<10	
045625	Upper Sandusky Exempted Village	<10		<10		

IRN	District	0.5 Year	1.5 Years	2.5 Years	3.5 Years	4.5 Years
044941	Urbana City	<10		<10		
049643	Valley Local					
044958	Vandalia-Butler City		<10			
046821	Vermilion Local		<10			
050393	Vinton County Local	<10				
044974	Wadsworth City	<10	<10	<10	<10	
044982	Wapakoneta City					
045005	Warrensville Heights City			<10		<10
048231	Washington Local	<10		<10		
049650	Washington-Nile Local	<10	<10			
049247	Waterloo Local		<10			
045641	Wauseon Exempted Village	<10		<10		
050252	Weathersfield Local					
045658	Wellington Exempted Village					
045021	Wellston City		<10			
048389	West Branch Local	<10		<10		
045054	West Carrollton City					
046359	West Clermont Local	<10	<10	<10	<10	<10
047225	West Geauga Local	<10		<10	<10	<10
047696	West Holmes Local	<10				
046219	West Liberty-Salem Local					
048884	West Muskingum Local					
046060	Western Brown Local		<10			
045047	Westerville City	<10	<10	<10	<10	<10
049106	Westfall Local			<10		
045062	Westlake City	<10	<10	<10	<10	
049668	Wheelersburg Local	<10	<10	<10		
045070	Whitehall City		<10			
045088	Wickliffe City		<10	<10	<10	<10
045096	Willard City	<10			<10	<10
046367	Williamsburg Local					
045104	Willoughby-Eastlake City	<10	<10	<10	<10	<10
045112	Wilmington City					
044081	Winton Woods City	<10	<10	<10	<10	
049577	Woodmore Local	<10				
049973	Woodridge Local		<10	<10	<10	<10

IRN	District	0.5 Year	1.5 Years	2.5 Years	3.5 Years	4.5 Years
045120	Wooster City	<10	<10	<10		
045138	Worthington City	<10		<10		<10
045146	Wyoming City		<10	<10		
045153	Xenia Community City	<10				
045674	Yellow Springs Exempted Village					
045161	Youngstown City	16	14	15	<10	<10
049544	Zane Trace Local	<10	<10			
045179	Zanesville City	<10				