

Ohio's Healthy Students Profiles



February 14, 2020

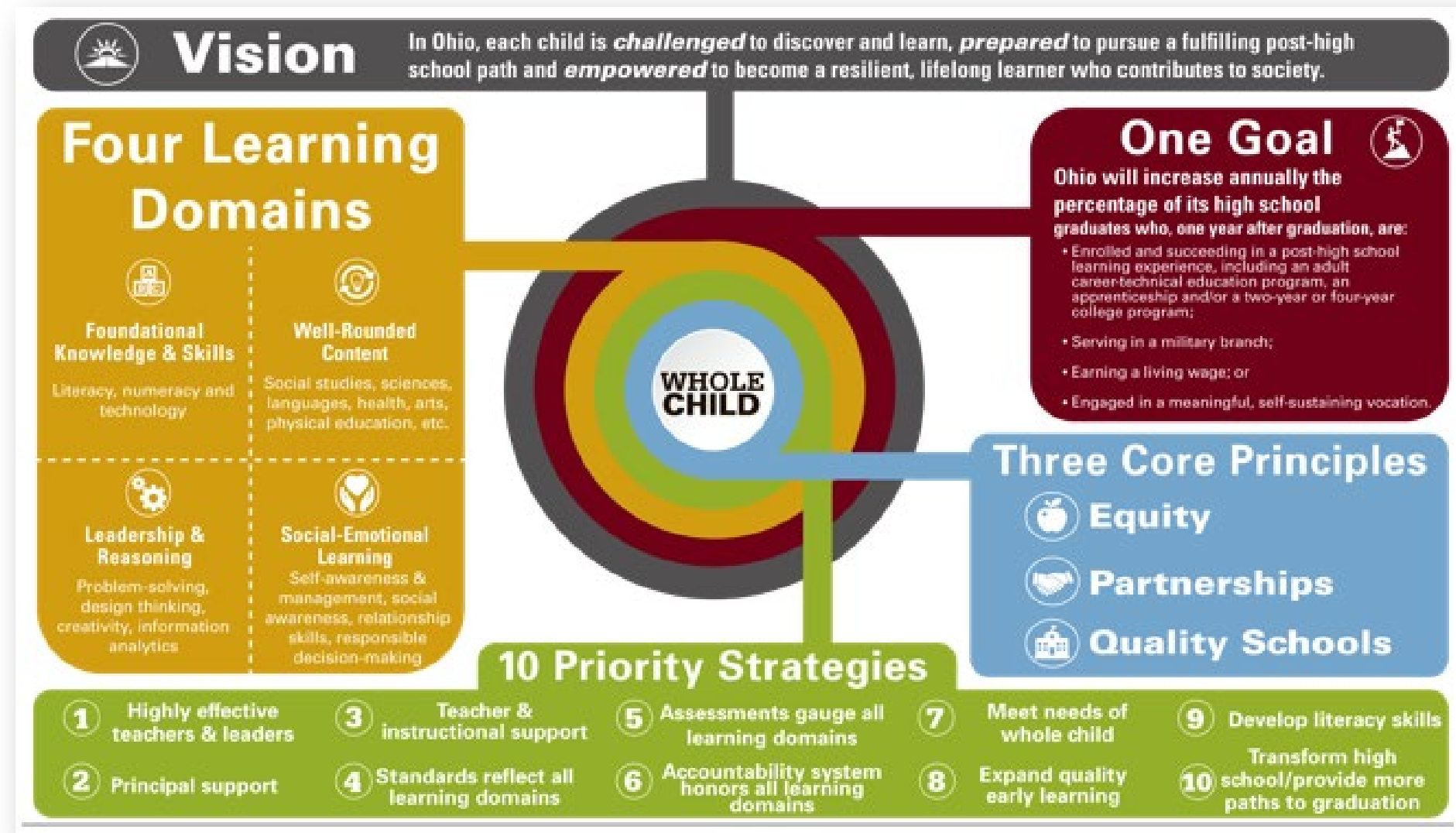
Today's Presenters

Anna Miller, *School Based Health Care Coordinator*
Office of Integrated Student Supports

Andrea Faulkner, *Assistant Director*
Office of Improvement and Innovation

Eben Dowell, *Senior Research Analyst*
Office of Research, Evaluation and Advanced Analytics

Each Child, Our Future





Our Vision

In Ohio, *each child is*
challenged to discover and
learn, ***prepared*** to pursue
a fulfilling post-high school
path and ***empowered*** to
become a resilient,
lifelong learner who
contributes to society.



**Mental and physical health
can impact educational outcomes.**

What are Ohio's Healthy Students Profiles?

A new resource to
help educators
***understand the health
needs of students***

Collaboration the with
Ohio Department of
Medicaid

Student-district
connection by the
Ohio Department of
Education

Creating the Profile

Health data analysis
by Medicaid

Ohio Department of
Education does *not*
have access to
any individual health
records.



All districts and schools with a report card in school year 2018

- At least 30 unique Medicaid-enrolled students
- Health measure suppression: counts <11
- District profiles include rates only

Ohio's Healthy Students Profile

Healthy Students Profile



Department
of Education

Department
of Medicaid

Based on Fiscal Year 2018

Enter TOKEN and click **Data/ Refresh All** above

Z999

District Name

[District Name suppressed for presentation]

School Name

[School Name suppressed for presentation]

Total Students (headcount)

908

Grades Served:

Medicaid Participants

622

68.5

K-6,P



Department
of Education

Healthcare Interactions

<i>Health measures pertain only to students on Medicaid.</i>	SCHOOL			STATE comparison
HEALTHCARE INTERACTIONS in Fiscal Year 2018	Out of	#	%	%
Over the past year, students with at least one...				
Primary Care Physician Visit	622	430	69.1	72.0
Comprehensive Well-Child Visit	622	190	30.5	39.9
Dental Care Visit	622	381	61.3	50.9
Vision Care Visit	622	239	38.4	26.3
Emergency Department Visit	622	312	50.2	34.0
Acute Inpatient Stay at a General Hospital	622	.	.	1.2

Health Conditions

HEALTH CONDITIONS in Fiscal Year 2018	Out of	#	%	%
Over the past year, students with an active diagnosis of...				
Asthma	622	15	2.4	5.3
Diabetes	622	.	.	0.3
Behavioral Health or Mental Health Issue	622	209	33.6	27.0
Serious Mental Illness	622	107	17.2	11.5
Autism	622	19	3.1	1.6
Depression	622	11	1.8	1.8
Anxiety	622	34	5.5	5.6
Attention-Deficit/Hyperactivity Disorder	622	101	16.2	15.5

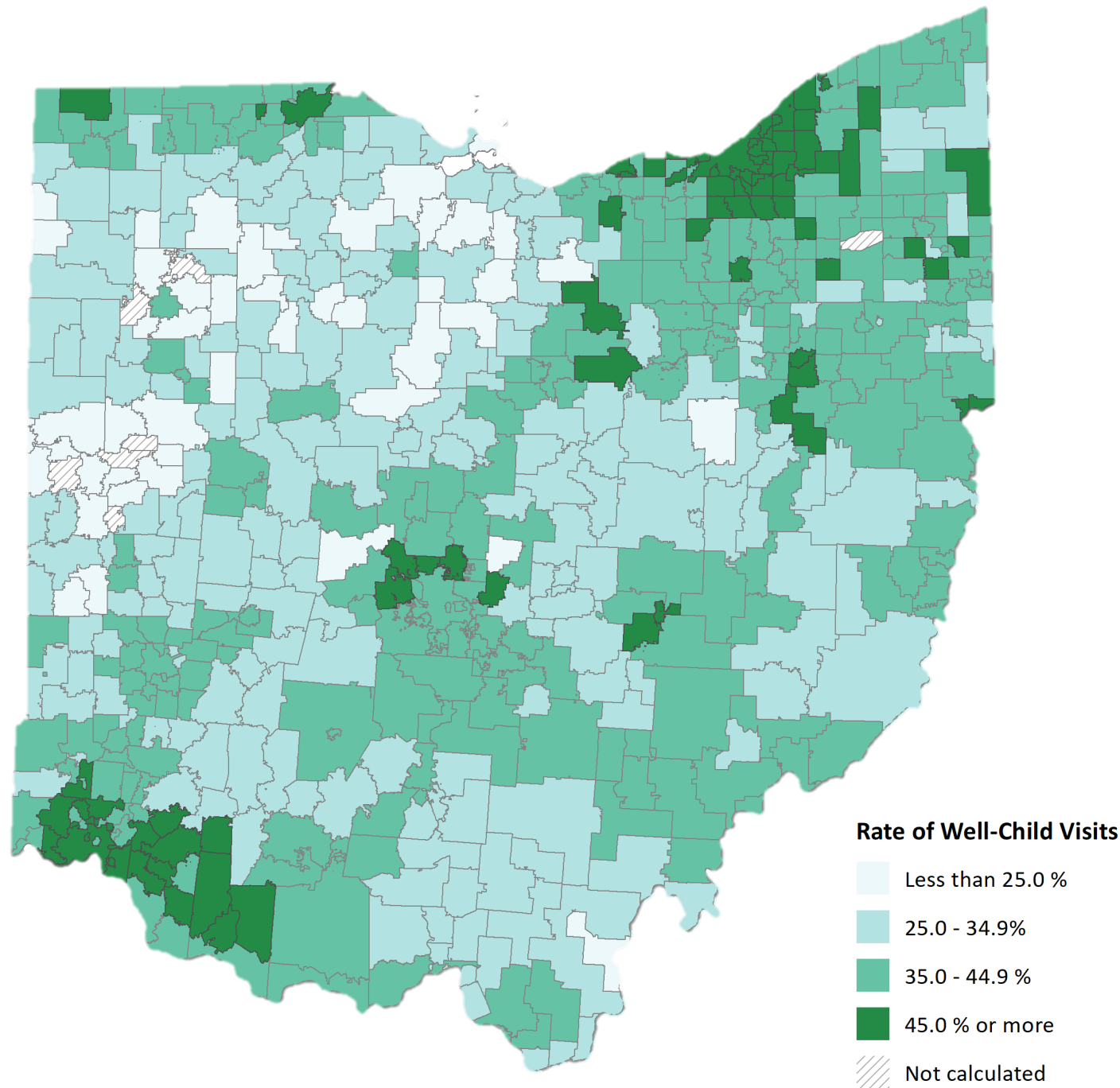
Education Indicators

<i>Education measures pertain only to students on Medicaid.</i>	SCHOOL			STATE comparison
EDUCATION INDICATORS in School Year 2018	Out of	#	%	%
Demonstrating Readiness for Kindergarten (on KRA)	78	22	28.2	27.9
English Language Arts Proficiency Rate	307	164	53.4	51.7
Mathematics Proficiency Rate	306	185	60.5	52.0
On-Time Graduation Rate (2018 cohort)
Chronic Absenteeism Rate (based on FTE)	581	47	8.1	20.0
Discipline Rate (Incidents per 100 FTE)	581	136	23.4	25.7

District Health Staff

<i>Staff rates pertain to all students in the district.</i>		DISTRICT		STATE overall
DISTRICT HEALTH STAFF in School Year 2018		Staff (FTE)	Per 1,000 students	Per 1,000 students
School Counselors		3.0	2.0	2.3
School Nurses		2.0	1.3	1.1
School Psychologists		0.0	0.0	1.2
School Social Workers		0.0	0.0	0.3
User notes on Page 2		Last Revised: 02.05.20		

Percent of Medicaid Students in School Districts with a Well-Child Visit during Fiscal Year 2018



Audience Questions





Using the Profile

- Comprehensive leadership team
- Conducting root causes
- Use existing resources
- Planning implementation

Seek and Align Funds

Targeting the usage of

- Student Wellness and Success funding
- Prevention Education funding
- Federal or other grant funds

Positive Behavioral Interventions and Supports

School-Based Health Care

From Profile to Practice

*How one district
used the profile*

Spotlight on Rock Hill Local School District



Audience Questions





Let's
Stay
Connected

WholeChild@education.ohio.gov

Visit education.ohio.gov

Search keywords:
*School-Based Health Care
Support Toolkit*

Scroll to the ***Ohio's Healthy
Students Profiles*** section