



**Department of  
Education &  
Workforce**

# CHILD NUTRITION

August 14, 2024



**Ohio** Principal  
Leadership **Supports**

---

*Strong Principals, Strong Schools*

# AGENDA

---

- **Welcome and Updates**
- **What is National School Lunch Program and School Breakfast Program**
- **Student Eligibility**
- **Maximizing Food Service Funds**
- **Meal Pattern and Offer Vs Serve**
- **Foodservice Support**
- **Program Resources**



**Department of  
Education &  
Workforce**

# Leadership Supports Webpage

- Administrative Calendar
- Resources
- Schooladmin@education.ohio.gov



**Ohio Principal Leadership Supports**  
*Strong Principals, Strong Schools*

The Ohio Department of Education and Workforce is committed to supporting all educators, including principals and assistant principals. A recent report on principal impact from the Wallace Foundation states, “**Principals really matter. Indeed, it is difficult to envision an investment with a higher ceiling on its potential return than a successful effort to improve principal leadership.**” From promoting a positive culture and climate to acting as the instructional leader, principals and assistant principals play an invaluable role in our schools.



Click on the buttons below to find information to support the work of principals and assistant principals.



# OHIO STUDENT VOICE WORKGROUP NOMINATIONS

Students will meet virtually and provide feedback and insights on education policy. The Department will support student leadership opportunities by providing sponsorship for [a school membership to the Ohio Association of Student Leaders](#).

---

The Department will accept [Ohio Student Voice Workgroup Nominations](#) through Aug. 31.

All nominators should follow the below next steps for completion:

- Identify students who are entering grades 8-12 in the 2024-2025 school year.
- Consider students who are not regular participants in school activities. The workgroup should consist of a diverse group of students that span cultural backgrounds, interests, and abilities.
- Each school may submit up to three nominations.
- Discuss this workgroup with your potential nominees to inform them and confirm their interest.
- Once nominees have confirmed interest, please contact the student's family to get parent permissions.
- Complete and submit the nomination forms.

Contact Latisha at [latisha.humphries@education.ohio.gov](mailto:latisha.humphries@education.ohio.gov) with any questions.



# MESSAGE FROM OAESA AND OASSA

---

Now is the time to join your professional organization!

- [OAESA Membership](#)
- [OASSA Membership](#)

# MESSAGE FROM OAESA AND OASSA

---



Applications are now being accepted for the 2024-2025 Beginning Administrators Mentoring Program (BAM), sponsored by the Ohio Association of Elementary School Administrators (OAESA) and the Ohio Association of Secondary School Administrators (OASSA) and funded through the Ohio Department of Education and Workforce.

Do not miss this opportunity to participate in this valuable mentorship and professional development programming FREE of charge! This program is designed for new administrators who are in their first or second year in an administrative role. Administrators chosen for the program will be provided with the following:

- Paid 1-year professional membership in OAESA or OASSA;
- Trained mentor for a 2-year period;
- Paid registration to the OAESA/OASSA Beginning Administrators Academy (BAA) professional development events in September and December in year one;
- Paid registration for the OASSA/OAESA Annual Professional Conference in the first or second year in the program;
- Access to a 360 feedback tool with coaching support for the OPES 2.0 evaluation process;
- Book study with mentor, with provided textbook aligned with BAM Program professional learning outcomes;
- A \$195.00 voucher for a PD event hosted by either OAESA or OASSA.

Click [HERE](#) to access the BAM Program Application. Space is limited; register early!

Interested in being an BAM Program Mentor? Each mentor will receive the Leadership Immersion Institute training through NAESP at no cost to them. Apply [HERE](#) to be a mentor or email [mjones@oaesa.org](mailto:mjones@oaesa.org) for more information.

# OHIO INSTRUCTIONAL LEADERSHIP ACADEMY

The Ohio Instructional Leadership Academy (OILA) is a K-12 program that utilizes blended learning strategies to provide building leadership teams with skills that will impact educator growth and student achievement.

## MESSAGE FROM OAESA AND OASSA



### EVIDENCE-BASED

OILA is built on the foundation and components for leadership as defined in the Ohio Standards for Teachers, Ohio Standards for Principals, Teacher Leader Model Standards, and Ohio Standards for Professional Development.



### GRANT-FUNDED

OILA is generously funded by a grant from the Ohio Department of Education and Workforce, except for the costs of substitutes and lunch. The grant will also cover the cost of up to four optional semester hours of workshop credit through Malone University.



### EFFECTIVE

Renowned educational leader Dr. Anthony Muhammad will facilitate whole group and small group interactive learning experiences. Dr. Muhammad strives to create a collaborative leadership culture within participating schools.



### COLLABORATIVE

Each OILA team will consist of a building-level administrator and up to three teachers. Teams will have an opportunity for in-person learning with Dr. Muhammad. *Suggested Experience: Principal, 3+ years; Teacher, 3+ years.*



### DATES

Participants must commit to attend the three institutes. **October 10, 2024; January 15, 2025; and March 4, 2025.** All three institutes will be held IN PERSON at OU Dublin Integrated Education Center in Dublin, Ohio.



### GROWTH POTENTIAL

Participants have the option to earn graduate credit covered by the grant. Those interested in expanding upon the learning in each of the three institutes must enroll for the online coursework through Malone University.



# INTRODUCTION TO THE SCHOOL BREAKFAST AND SCHOOL LUNCH PROGRAMS

**KATIE MCCURDY**

Education Program Consultant  
Office of Nutrition



# DISCUSSION OUTLINE

Principal Standards

Overview of the National School Lunch Program and School Breakfast Program

Required Meal Pattern and Offer vs. Serve

Determining Student Eligibility





Maximizing Food Service Funds

Food Service Support

Program Resources



# OHIO STANDARDS FOR PRINCIPALS | 2018

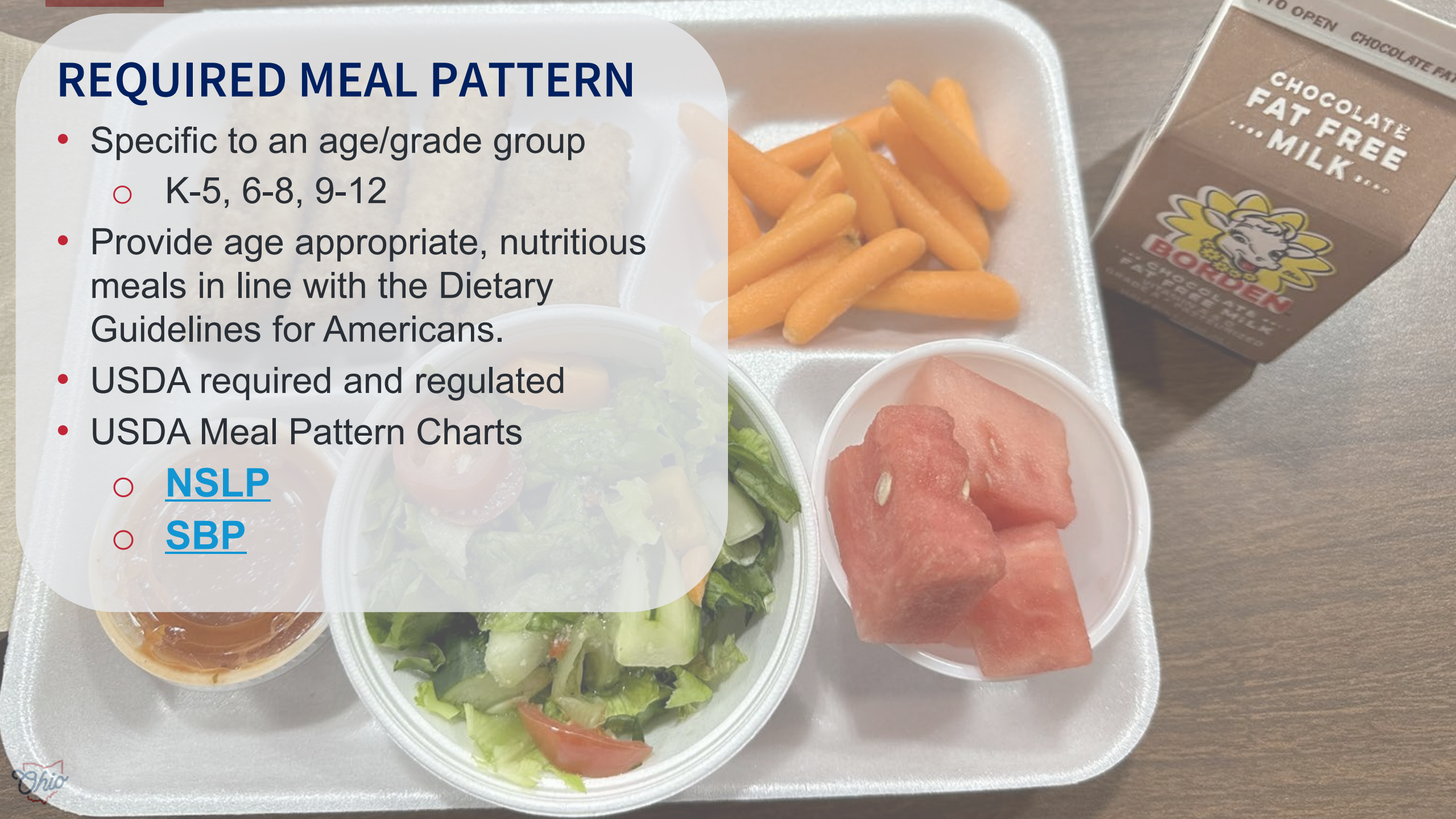
 <b>Leadership</b>	<b>Standard 1: Mission, Vision and Core Values</b>	The effective educational leader develops, advocates and enacts a shared mission, vision and core values.
	<b>Standard 2: Ethics and Professional Norms</b>	The effective educational leader acts ethically and according to professional norms.
	<b>Standard 3: School Improvement</b>	The effective educational leader implements collaborative structures and shared leadership to analyze data and causality, align evidence-based strategies to deliberate goals, develop the capacity of staff, and partner with internal and external supports to improve teaching and learning conditions and outcomes.
 <b>Learning</b>	<b>Standard 4: Curriculum, Instruction and Assessment</b>	The effective educational leader fosters an environment of effective and rigorous personalized instruction by ensuring each student has equitable access to effective teachers, leaders and learning supports.
	<b>Standard 5: Professional Capacity of School Personnel</b>	The effective educational leader supports all staff by promoting and organizing an environment focused on continuous improvement and personal growth to achieve positive outcomes for each student.
 <b>Culture</b>	<b>Standard 6: Equity and Cultural Responsiveness</b>	The effective educational leader models, supports and cultivates a school culture characterized by equity and inclusiveness.
	<b>Standard 7: Community of Care and Support</b>	The effective educational leader develops and sustains positive partnerships with and among students, staff and stakeholders to create a safe and caring school environment.
	<b>Standard 8: Meaningful Engagement of Families and Community</b>	The effective educational leader develops and sustains partnerships with families and the community by acknowledging the school as a community resource and understanding the context of its existence within the larger community.
 <b>Management</b>	<b>Standard 9: Strategic Staffing</b>	The effective educational leader is integral to the recruitment, hiring and assignment of staff to ensure representation of diverse expertise and skill sets are aligned to the priorities of the focused plan while also promoting staff professional growth, cultural competence and opportunities for leadership.
	<b>Standard 10: School Operations</b>	The effective educational leader develops and implements structures to maximize learning through relationships, management, fiscal responsibility and adherence to district and state laws, policies and procedures.

# WHAT IS NSLP & SBP?

- Voluntary programs for both schools and students
- Provides opportunity for free or reduced-price meals to students
  - Income eligible
  - Categorically eligible
    - SNAP, Medicaid (income eligible), homeless, foster, runaway, Headstart
- Federally, USDA administers the program
- State level, DEW administers the program

# REQUIRED MEAL PATTERN

- Specific to an age/grade group
  - K-5, 6-8, 9-12
- Provide age appropriate, nutritious meals in line with the Dietary Guidelines for Americans.
- USDA required and regulated
- USDA Meal Pattern Charts
  - [NSLP](#)
  - [SBP](#)



# NSLP MEAL PATTERN

- Emphasis whole grains
- Variety in vegetable subgroups
- Reinforcing Dietary Guidelines for Americans

Amount of Food<sup>1</sup> per Week (minimum per day)

Meal Components	Grades K-5	Grades 6-8	Grades 9-12
Fruits (cups) <sup>2</sup>	2 1/2 ( 1/2 )	2 1/2 ( 1/2 )	5 (1)
Vegetables (cups) <sup>2</sup>	3 3/4 ( 3/4 )	3 3/4 ( 3/4 )	5 (1)
Dark green subgroup <sup>3</sup>	1/2	1/2	1/2
Red/orange subgroup <sup>3</sup>	3/4	3/4	1 1/4
Beans, peas, and lentils subgroup <sup>3</sup>	1/2	1/2	1/2
Starchy subgroup <sup>3</sup>	1/2	1/2	1/2
Other vegetables subgroup <sup>3,4</sup>	1/2	1/2	3/4
Additional vegetables from any subgroup to reach total	1	1	1 1/2
Grains (oz. eq.) <sup>5</sup>	8-9 (1)	8-10 (1)	10-12 (2)
Meats/meat alternates (oz. eq.) <sup>6</sup>	8-10 (1)	9-10 (1)	10-12 (2)
Fluid milk (cups) <sup>7</sup>	5 (1)	5 (1)	5 (1)

# SAMPLE K-8 MENU

- [Menu's that Move](#)
- Compliant lunch menus with recipes

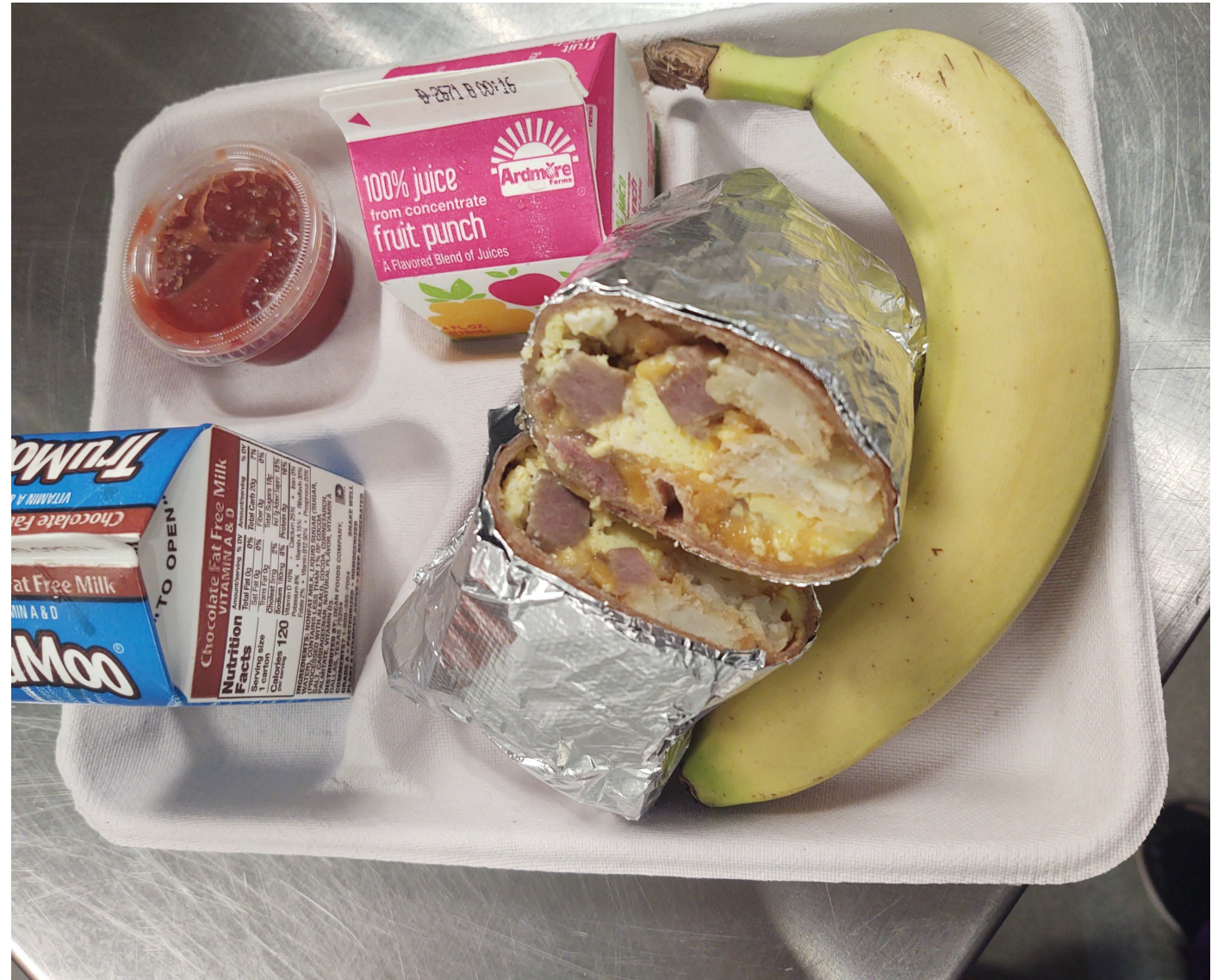
## Grades K – 8 • Fall • Week 1 Meal Components

	Monday	Tuesday	Wednesday	Thursday	Friday	Weekly Totals ACTUAL	Weekly Totals REQUIREMENT
<b>MEAL COMPONENTS</b>	Hamburger on a Bun Fresh Apple Slices Tater Tots 2 Pkts Ketchup Vegetarian Baked Beans Milk	Sweet Sesame Chicken Stir Fry with Asian Brown Rice Apricots California Casserole Fortune Cookie Milk	2 Cheese & Pepperoni Breadsticks with Marinara Sauce Pears Spinach Strawberry Salad Milk	Walking Taco Peaches in Gelatin Cowboy Corn Salad Tortilla Scoop, 1 oz Milk	Chicken Nuggets 1 oz BBQ Sauce Pineapple Sweet Potato Fries Green Beans & Carrots Whole-Grain Roll Milk		
<b>Vegetables</b>	¾ cup	1 cup	1 cup	1-¼ cups	1 cup	5 cups	3-¾ cups
<b>Dark Green</b>			Spinach Strawberry Salad = ½ cup			½ cup	½ cup
<b>Red/Orange</b>		Sweet Sesame Chicken Stir Fry = ¼ cup	Marinara Sauce = ½ cup	Walking Taco = ¼ cup	Sweet Potato Fries = ½ cup	1-½ cups	¾ cup
<b>Beans/Legumes</b>	Vegetarian Baked Beans = ¼ cup			Cowboy Corn Salad = ¼ cup		½ cup	½ cup
<b>Starchy</b>	Tater Tots = ½ cup	California Casserole = ¼ cup				¾ cup	½ cup
<b>Other</b>	Lettuce/Tomato = ¼ cup	California Casserole = ½ cup		Cowboy Corn Salad = ½ cup Walking Taco = ¼ cup	Green Beans & Carrots = ½ cup	1-¾ cups	½ cup
<b>Fruits</b>	Fresh Apple Slices = ½ cup	Apricots = ½ cup	Strawberry Spinach Salad = ½ cup (¼ cup FRESH) Pears = ½ cup	Peaches in Gelatin = ½ cup (½ cup FRESH)	Pineapple = ½ cup	3 cups (¾ cup FRESH)	2 ½ cups
<b>Grains</b>	Hamburger on a Bun = 2 oz-eq	Asian Brown Rice = 1 oz-eq	Cheese & Pepperoni Breadsticks = 2 oz-eq	Tortilla Scoops = 1 oz-eq	Chicken Nuggets = 1 oz-eq Whole-Grain Roll = 1 oz-eq	8oz-eq	8–9 oz-eq
<b>Whole Grain-Rich</b>	Hamburger on a Bun = 2 oz-eq	Asian Brown Rice = 1 oz-eq			Whole-Grain Roll = 1 oz-eq	4 oz-eq	½ grains are w/g, 4 oz-eq
<b>Meat / Meat Alt</b>	Hamburger on a Bun = 2 oz-eq	Sweet Sesame Chicken Stir Fry = 2 oz-eq	Cheese & Pepperoni Breadsticks = 1 oz-eq	Walking Taco = 3 oz-eq	Chicken Nuggets = 2 oz-eq	10oz-eq	9–10 oz-eq
<b>Milk</b>	Milk = 1 cup	Milk = 1 cup	Milk = 1 cup	Milk = 1 cup	Milk = 1 cup	5 cups	5 cups



# SCHOOL BREAKFAST PROGRAM (SBP)

- School Breakfast Program [meal pattern](#)
- Required if operating CEP
- Can offer multiple ways:
  - Traditional cafeteria
  - Grab and go
  - In classroom
- Required household notification





# OFFER VS. SERVE

- Allows students to select what they want from the planned menu
- Reduces plate waste
- Help students feel autonomous
- Students must select 3 items, one of which must be ½ cup of fruit or vegetable.
- Offer vs. Serve [Resources](#) including printable posters



# OFFER VS. SERVE



- Required for grades 9-12 lunch
- Optional K-8
- Schools must offer all 5 food components to all students
- Meals without the minimum components are non reimbursable
- Training staff and coaching students can help speed up slow service lines

# DETERMINING ELIGIBILITY UNDER TRADITIONAL MODEL

---

- Free or Reduced-Price Student Meal Applications
- Direct Certification
  - SNAP, Ohio Works First (OWF) Medicaid (Income Eligible)
  - Homeless, foster, runaway, HeadStart
- Meals claimed by category
  - Monthly claims into the Claims Reimbursement and Reporting System (CRRS)



**Department of  
Education &  
Workforce**

# OFFICE OF NUTRITION RESOURCES

---

- Weekly 'Items of Interest' email sent to all school lunch and breakfast participants
- School Nutrition Program Annual Calendar and Monthly Checklist
- Ohio School Lunch [Webpage](#)
- Each sponsor is assigned an Education Program Specialist



# MAXIMIZING FUNDING - ELIGIBILITY

- COMMUNICATE, COMMUNICATE, COMMUNICATE!
  - Alert households multiple times throughout the year about availability of applications, paper or online.
  - Use [USDA Translated Applications](#) as needed
- Conduct Direct Certification multiple times a year

# MAXIMIZING FUNDING – PROGRAM OPERATIONS

- USDA Foods Planned Assistance Level (PAL)
- Examine food waste/plate cost
  - Are kids not enjoying certain items?
  - Involve children in meal service/menu development
- Efficient kitchen workflow



# PRICING MEALS IN NSLP

- Traditional Operations
- Meals are claimed according to benefit status.
  - Free, reduced and paid
    - Ohio budget for FY24 and FY25 covers the cost of reduced-price meals for students
    - Reduced-price meal eligible children will receive meals at no cost
    - Meals must be counted and claimed as reduced.
  - Paid – school determined meal pricing

# PRICING MEALS IN NSLP

## Community Eligibility Provision (CEP)

- Schools in high poverty communities
- Offer no cost meals to all students
- Reimbursements based poverty data instead of applications
- Four-year cycle
- Identified student percentage is 25% from the previous 40% requirement.
- *May not be financially viable for all schools.*



# CHARGE POLICY

- Ensure transparency
- Must be documented
- Must be communicated in writing to households
- Clearly specifies number of charges or maximum dollar amount clearly stated
- Adjust policy if needed
- Communicate the charge policy to all staff

# PRINCIPALS SUPPORT TO FOODSERVICE

---

- Meet with Foodservice Staff about their questions or concerns
  - Address non urgent foodservice issues outside of serving times.
  - Example: If children struggle with choosing foods under offer vs serve, can their teacher have a mini session in class on what kids need to do in the lunchroom or during the first week of school host a lunchroom etiquette session.
- Encourage training for foodservice staff both internally and externally
- Encourage staff to attend Office of Nutrition In-person training class.

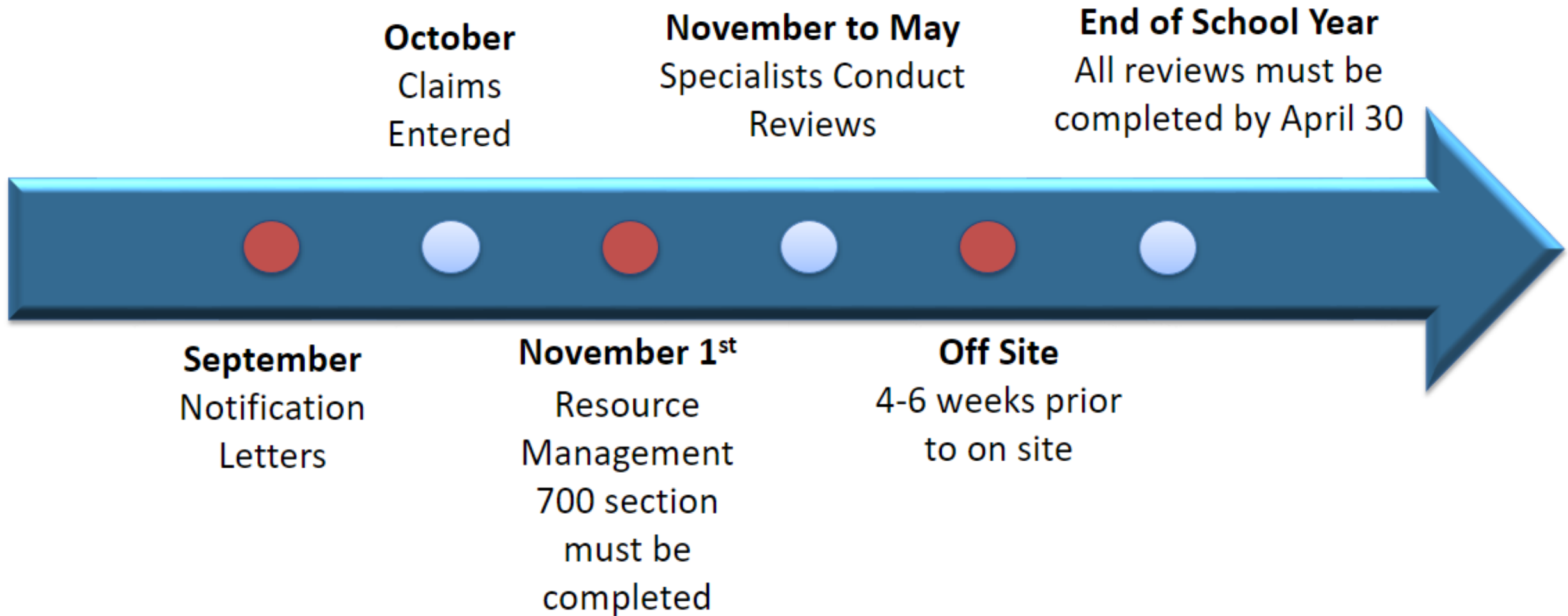
# PRINCIPALS SUPPORT TO FOODSERVICE

- Familiarize yourself with School Nutrition Program [Calendar](#)
- Advocate for the food service team
- Participate in school breakfast and lunch as a model to students
- Encourage teachers to participate in school breakfast and lunch
- Encourage and support students in trying new foods
- Use the Office of Nutrition as a resource for problem solving

# SCHOOL MEAL ADMINISTRATIVE REVIEWS

- Schools receive a deep dive into program operations once every five years or as needed for evaluation.
- Notified Mid September – Superintendent, Treasurer and Program Contact
- Principals do not have a primary role in the review but can support food service during the review

## Timeline of Administrative Review



# OFFICE OF NUTRITION RESOURCES



- Weekly 'Items of Interest' email
- School Nutrition Program Annual [Calendar](#) and Monthly Checklist
- Ohio School Lunch [webpage](#)
- Assigned Education Program Specialist
- Munch [visit!](#)
- Consider the Summer Food Service [Program!](#)
- Consider Farm to School [Initiatives](#)

# QUESTIONS?

---

EDUCATION.OHIO.GOV



**Department of  
Education &  
Workforce**



# NEXT PRINCIPAL CHAT

---

- Second Wednesday each month at 9:30 – 10:30am
- September 11, 2024 featuring Educator Evaluation – Best Practices

Contact: [schooladmin@education.ohio.gov](mailto:schooladmin@education.ohio.gov)





# EXIT SURVEY

---





**Department of  
Education &  
Workforce**

EDUCATION.OHIO.GOV