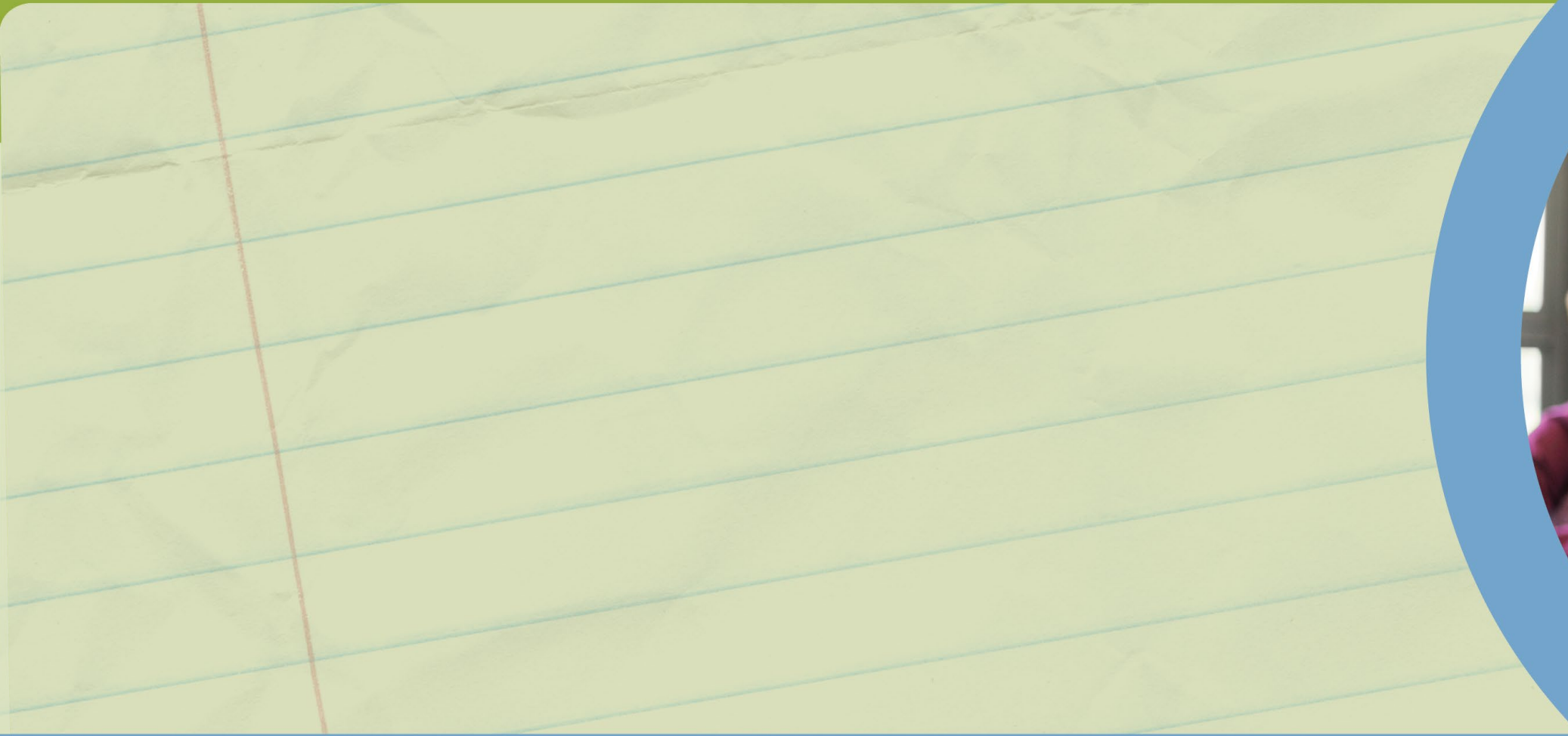


2021-2022 Community School Sponsor Evaluation: Academic Component



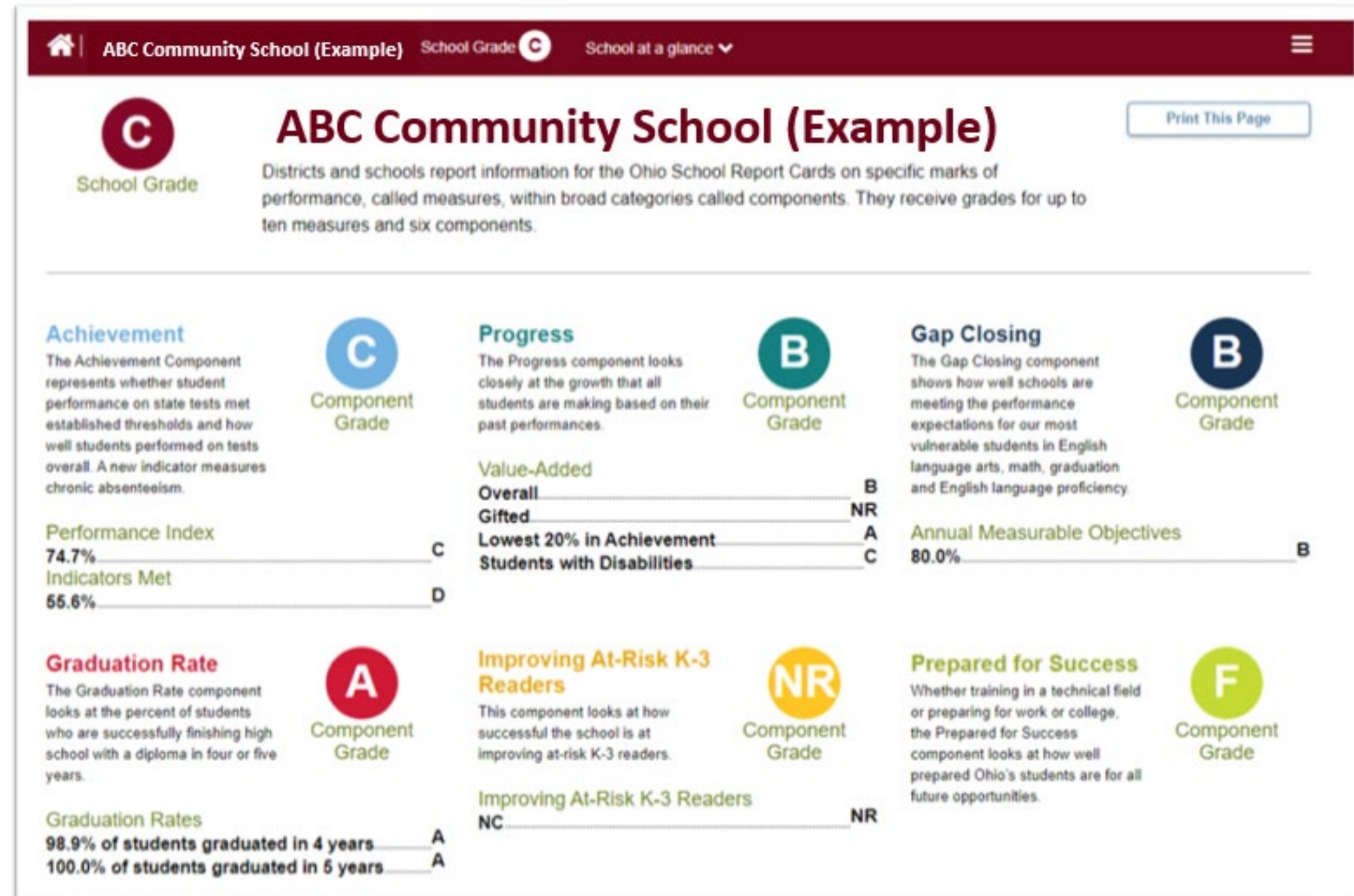
Office of Accountability · August 2021



Academic Performance Component

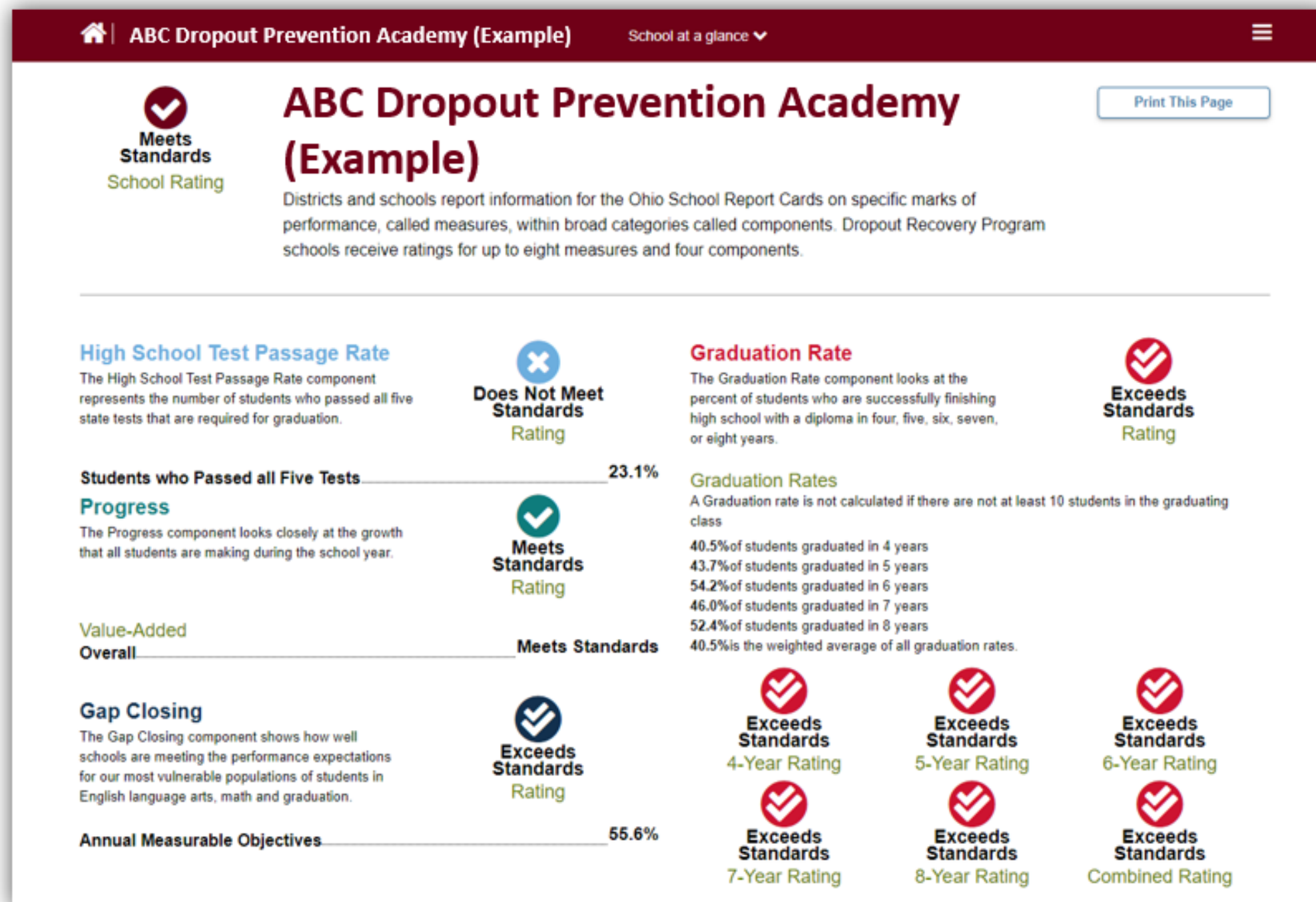
- Must align to the Ohio School Report Cards
- Based upon all applicable report card components
- Weighted by the number of students enrolled in each school in the sponsor's portfolio
- State law exempts schools open less than two full years and schools where a majority of the students have a disability

Overview Page: Traditional Report Card





Overview Page: Dropout Prevention and Recovery Report Card





Using Overall Report Card Ratings

- For each school, the applicable components are combined into an overall report card rating.
- This overall rating is a five-star scale, or a label of ‘Exceeds’, ‘Meets’ or ‘Does Not Meet’ Standards.

Common Point Scale Used

Traditional Report Card Overall Rating	Dropout Prevention and Recovery Report Card Overall Rating	Equivalent Points on Common Scale
5 Stars	Exceeds Standards	4
4 – 4.5 Stars		3
3 – 3.5 Stars	Meets Standards	2
2 – 2.5 Stars		1
1 – 1.5 Star(s)	Does Not Meet Standards	0

Converting Overall Rating to Common Scale

School	Report Card Overall Rating	Common Scale Points	Enrollment	Weight	Weighted Points
Community School #1	5 Stars	4	250	$X (250/1000)$	1.000
Community School #2	2 Stars	1	500	$X (500/1000)$	0.500
Dropout Prevention and Recovery School #3	Meets Standards	2	250	$X (250/1000)$	0.500
Total Weighted Points					2

Weighting by Student Enrollment

School	Report Card Overall Rating	Common Scale Points	Enrollment	Weight	Weighted Points
Community School #1	5 Stars	4	250	→ $\times (250/1000)$	1.000
Community School #2	2 Stars	1	500	→ $\times (500/1000)$	0.500
Dropout Prevention and Recovery School #3	Meets Standards	2	250	→ $\times (250/1000)$	0.500
Total Weighted Points					2

Summing the Weighted Points by Sponsor

School	Report Card Overall Rating	Common Scale Points	Enrollment	Weight	Weighted Points
Community School #1	5 Stars	4	250	$X (250/1000)$	1.000
Community School #2	2 Stars	1	500	$X (500/1000)$	0.500
Dropout Prevention and Recovery School # 3	Meets Standards	2	250	$X (250/1000)$	0.500
Total Weighted Points					2



Rounding Points for Academic Component Score

Total Weighted Points for Sponsor	Academic Performance Component Final Score
3.5 – 4	4
2.5 – 3.49	3
1.5 – 2.49	2
.5 – 1.49	1
0 – .49	0



Data Source for Academic Component

There is no document submission for the academic component of the sponsor evaluation cycle. This component is based entirely on report card data, so sponsors do not need to upload any documentation into Epicenter.

EMIS Processing Schedule 2021-2022

Draft

EMIS Data Collection Calendar for 2021-2022

By Major Data Grouping

Main Student Collections

	<u>Data Set</u>	<u>Open Date</u>	<u>Close Date</u>
Student Cross Reference (FY22) (2022SSCRS)	S	7/1/2021	7/15/2022
Retention - Grade 3 Only (FY22) (2022SRTNT)	S	7/15/2021	9/10/2021
SOES Beginning of Year Student Collection (FY22) (2022SAODE)	S	8/2/2021	12/20/2021
SOES Student Contact(s) Collection (FY22) (2022SSSDT)	S	8/2/2021	8/9/2022
Beginning of Year Student Collection (FY22) (2022S1TRD)	S	9/9/2021	12/20/2021
Midyear Student Collection (FY22) (2022S2TRD)	S	1/3/2022	4/29/2022
SOES End of Year Student Collection (FY22) (2022SBODE)	S	1/3/2022	7/13/2022
End of Year Student Collection (FY22) (2022S3TRD)	S	5/5/2022	7/13/2022
Current Graduation Credit Progress Collection (FY22) (2022SGRCR)	S	9/16/2021	9/14/2022

EMIS Processing Schedule 2021-2022

Assessment Collections

Summer and Fall End of Course Assessment Collection (FY22) (2022AGEFL)	A	9/23/2021	3/25/2022
Kindergarten Readiness Assessment Collection (FY22) (2022AGOFL)	A	9/23/2021	2/21/2022
Fall Early Learning Assessment Collection (FY22) (2022AGBFL)	A	9/23/2021	4/1/2022
OGT Assessment Collection (FY22) (2022AGXFY)	A	10/21/2021	8/5/2022
Fall 3rd Gr Reading Collection (FY22) (2022AGNFL)	A	10/21/2021	3/4/2022
Child Outcome Summary Assessment Collection (FY22) (2022AGMFY)	A	10/21/2021	8/26/2022
DPR Assessment Collection (FY22) (2022AGDFY)	A	10/21/2021	7/13/2022
OELPA Assessment Collection (FY22) (2022AGFSP)	A	1/27/2022	8/5/2022
Spring Alternate Assessment Collection (FY22) (2022AALTS)	A	2/10/2022	8/5/2022
Career Tech Accountability Assessment Collection (FY22) (2022ACTSP)	A	2/10/2022	8/5/2022
Other Accountability Assessments (FY22) (2022ANACC)	A	2/10/2022	8/10/2022
Spring End of Course State Assessment Collection (FY22) (2022AGESP)	A	2/24/2022	7/13/2022
Spring State Assessment Grades 3-8 Collection (FY22) (2022AGNSP)	A	2/24/2022	7/13/2022
Spring Early Learning Assessment Collection (FY22) (2022AGBSP)	A	4/21/2022	8/26/2022



EMIS Data Appeals

- EMIS data appeals open immediately after each reporting window ends.
- Schools have about a week to file an appeal if they discover something is incorrect or incomplete.
- Form must be in the “SUPERINTENDENT APPROVED” status to be considered by the Department.



Resources for EMIS Coordinators

- EMIS collection calendars
- EMIS manual
- Data appeals information



EMIS Processing Schedule 2021-2022

**For more information on data reporting,
please visit the Department's EMIS
webpage:**

**[http://education.ohio.gov/Topics/Data/EMIS/
Reporting-Responsibilities](http://education.ohio.gov/Topics/Data/EMIS/Reporting-Responsibilities)**



Data Quality Tool: Secure Data Center

- When schools submit data in EMIS, it can be seen in the Secure Data Center (SDC).
- The reports available in the SDC can be used to review and verify accuracy and completeness of reported data.
- The superintendent of each school receives access to the SDC and decides who else is granted access.
- SDC access is granted as a role in the Ohio Educational Directory System (OEDS).

Secure Data Center Reports

Safe Home About ODE State Agencies Online Services Ohio.gov

Ohio | Department of Education

Home

Ohio Department of Education Report Portal

Secure Data Center

- Career and Technical Education**
Reports about Career Tech Education data.
- Student Attendance**
Reports about Absenteeism and Attendance.
- Discipline**
Reports about Disciplinary incidents.
- Teacher and Staff**
Reports about Principals, Teachers and Other Staff.
- Enrollment**
Reports about Student Enrollment.
- Test Result**
Reports about Ohio's State Tests.
- Financial**
Reports about Expenditures and Revenues.
- Value Added**
Reports about Value Added data.
- Graduation**
Reports about High School Graduation Rates.
- Local Report Card**
Reports depicting local report card measures.
- Improving At-Risk K-3 Readers**
Reports about Diagnostic results, K3 Literacy and Third Grade Reading Guarantee.

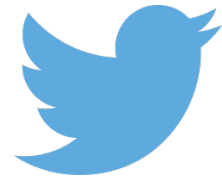
Ohio Department of Education
877-644-6338 | Sign-up for Alerts | contact.center@education.ohio.gov

State Board of Education of Ohio
Laura Kohler, President

Questions?

Submit questions to the
Sponsor Evaluation inbox:
sponsor.evaluation@education.ohio.gov





@OHEducation

