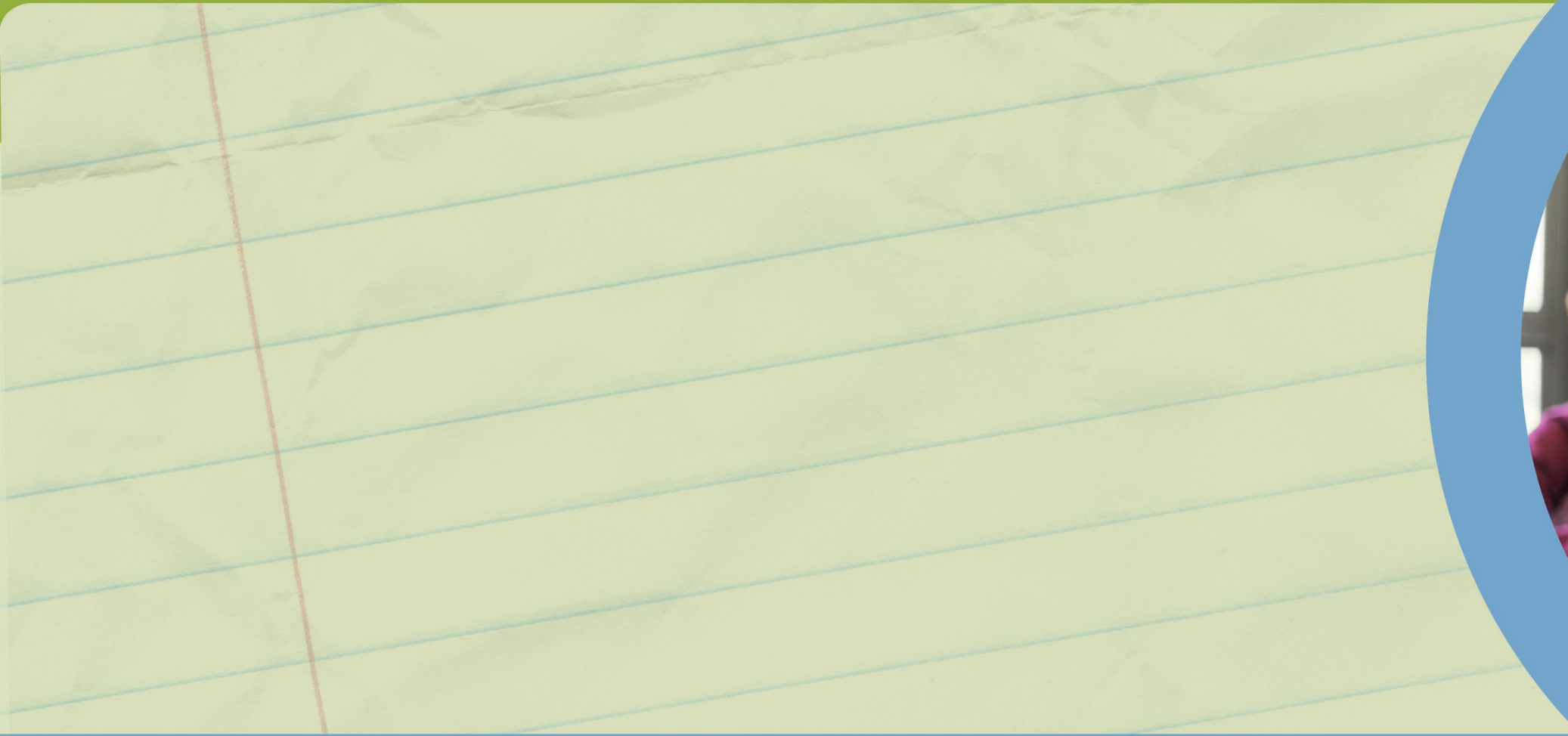


2022-2023 Community School Sponsor Evaluation: Academic Component



Office of Accountability · July 2022



Academic Performance Component

- Must align to the Ohio School Report Cards
- Based upon all applicable report card components
- Weighted by the number of students enrolled in each school in the sponsor's portfolio
- State law exempts schools open less than two full years and schools where a majority of the students have a disability

Overview Page: Traditional Report Card

★★★★★
Needs support to meet state standards.

District Overview

The Ohio School Report Cards include performance information provided by schools and districts including academic, financial, and opportunity to learn data. Some of this data is then combined into six components that receive star ratings to indicate the level of performance for the school and district.

[Print](#)

Achievement

This component represents whether student performance on state tests met established thresholds and how well students performed on tests overall.

★★★★★
Needs support to meet state standards in academic achievement.

[View More Data](#)

[Gifted Data](#)

Progress

This component looks closely at the growth all students are making based on their past performances.

★★★★★

[View More Data](#)

Gap Closing

The Gap Closing Component is a measure of the reduction in educational gaps for student subgroups.

★★★★★
Meets state standards in closing educational gaps.

[View More Data](#)

Graduation

The Graduation Component is a measure of the four-year adjusted cohort graduation rate and the five-year adjusted cohort graduation rate.

★☆☆☆☆
Needs significant support to meet state standards in graduation rates.

[View More Data](#)

Early Literacy

This component looks at how successful schools are at improving reading for at-risk students in grades K-3.

★☆☆☆☆
Needs significant support to meet state standards in early literacy (K-3).

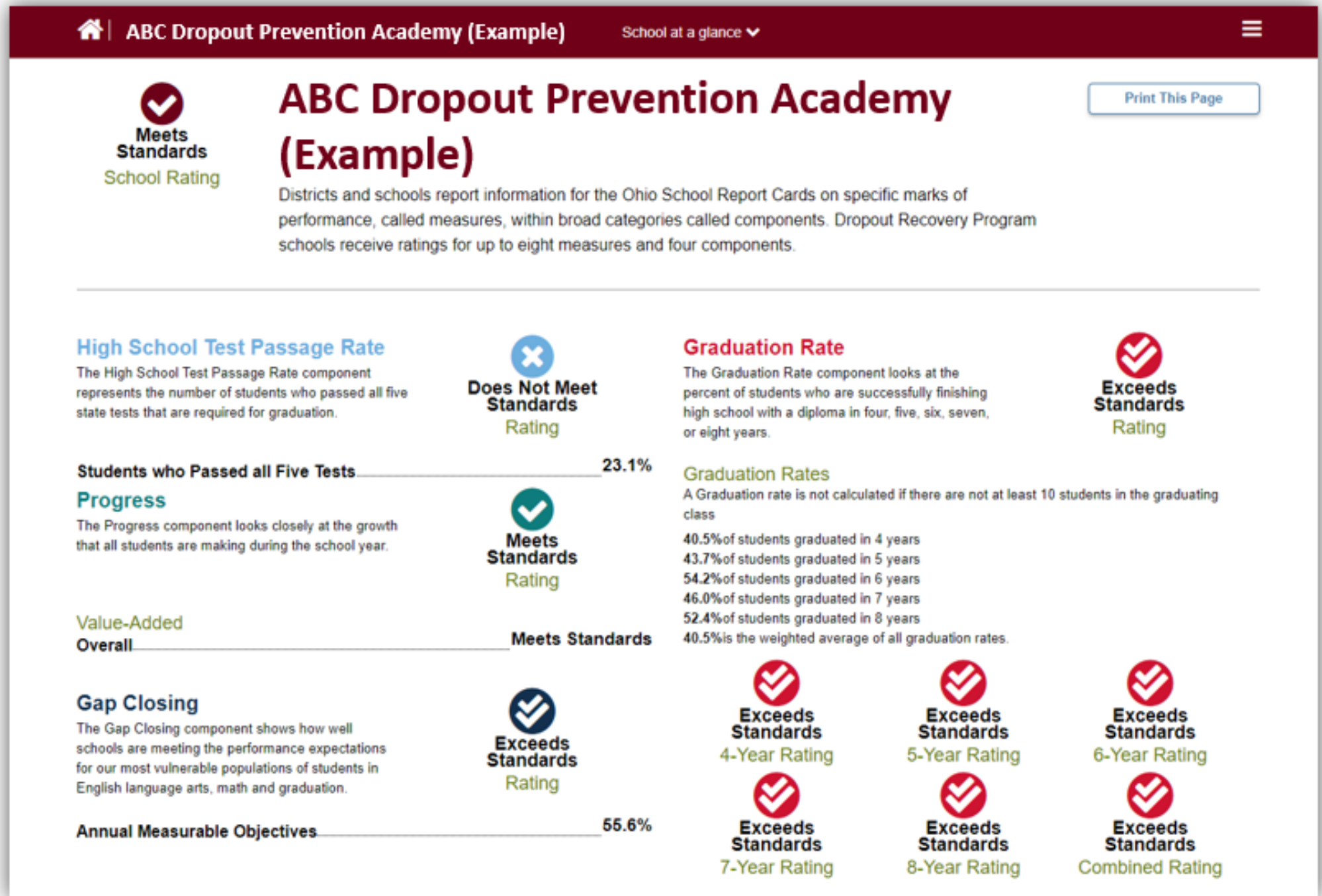
[View More Data](#)

College, Career, Workforce and Military Readiness

This component looks at how well-prepared Ohio's students are for future opportunities, whether training in a technical field or preparing for work or college.

[View More Data](#)

Overview Page: Dropout Prevention and Recovery Report Card





Using Overall Report Card Ratings

- For each school, the applicable components are combined into an overall report card rating.
- This overall rating is a five-star scale, or a label of ‘Exceeds’, ‘Meets’ or ‘Does Not Meet’ Standards.

Common Point Scale Used

Traditional Report Card Overall Rating	Dropout Prevention and Recovery Report Card Overall Rating	Equivalent Points on Common Scale
5 Stars	Exceeds Standards	4
4.5 Stars		3.5
4 Stars		3
3.5 Stars		2.5
3 Stars	Meets Standards	2
2.5 Stars		1.5
2 Star		1
1.5 Stars		0.5
1 Star	Does Not Meet Standards	0

Converting Overall Rating to Common Scale

School	Report Card Overall Rating	Common Scale Points	Enrollment	Weight	Weighted Points
Community School #1	5 Stars	4	250	X (250/1000)	1.000
Community School #2	2 Stars	1	500	X (500/1000)	0.500
Dropout Prevention and Recovery School #3	Meets Standards	2	250	X (250/1000)	0.500
Total Weighted Points					2

Weighting by Student Enrollment

School	Report Card Overall Rating	Common Scale Points	Enrollment	Weight	Weighted Points
Community School #1	5 Stars	4	250	→ x (250/1000)	1.000
Community School #2	2 Stars	1	500	→ x (500/1000)	0.500
Dropout Prevention and Recovery School #3	Meets Standards	2	250	→ x (250/1000)	0.500
Total Weighted Points					2

Summing the Weighted Points by Sponsor

School	Report Card Overall Rating	Common Scale Points	Enrollment	Weight	Weighted Points
Community School #1	5 Stars	4	250	X (250/1000)	1.000
Community School #2	2 Stars	1	500	X (500/1000)	0.500
Dropout Prevention and Recovery School # 3	Meets Standards	2	250	X (250/1000)	0.500
Total Weighted Points					2

Rounding Points for Academic Component Score

Total Weighted Points for Sponsor	Academic Performance Component Final Score
Four Points	4.0
At least 3.5 Points and less than 4.0 Points	3.5
At least 3.0 Points and less than 3.5 Points	3.0
At least 2.5 Points and less than 3.0 Points	2.5
At least 2.0 Points and less than 2.5 Points	2.0
At least 1.5 Point and less than 2.0 Points	1.5
At least 1.0 Point and less than 1.5 Points	1.0
At least 0.5 Points and less than 1.0 Point	0.5
Zero Points	0



Data Source for Academic Component

There is no document submission for the academic component of the sponsor evaluation cycle. This component is based entirely on report card data, so sponsors do not need to upload any documentation into Epicenter.

EMIS Processing Schedule 2022-2023

EMIS Data Collection Calendar for 2022-2023

By Major Data Grouping

Main Student Collections

	<u>Data Set</u>	<u>Open Date</u>	<u>Close Date</u>
Student Cross Reference (FY23) (2023SSCR5)	S	7/1/2022	7/14/2023
Retention - Grade 3 Only (FY23) (2023SRTNT)	S	7/14/2022	9/2/2022
SOES Beginning of Year Student Collection (FY23) (2023SAODE)	S	8/1/2022	12/19/2022
SOES Student Contact(s) Collection (FY23) (2023SSSDT)	S	8/1/2022	8/8/2023
Beginning of Year Student Collection (FY23) (2023S1TRD)	S	8/15/2022	12/19/2022
Midyear Student Collection (FY23) (2023S2TRD)	S	1/2/2023	4/28/2023
SOES End of Year Student Collection (FY23) (2023SBODE)	S	1/2/2023	7/12/2023
End of Year Student Collection (FY23) (2023S3TRD)	S	5/4/2023	7/12/2023
Current Graduation Credit Progress Collection (FY23) (2023SGRCR)	S	9/22/2022	9/13/2023
Initial Exiting Student Follow up (FY23) (2023S???)	S	10/19/2022	1/6/2023
Final Exiting Student Follow up (FY23) (2023S???)	S	2/9/2023	8/4/2023

EMIS Processing Schedule 2022-2023

Assessment Collections

Summer and Fall End of Course Assessment Collection (FY23) (2023AGEFL)	A	9/22/2022	3/24/2023
Kindergarten Readiness Assessment Collection (FY23) (2023AGOFL)	A	9/22/2022	2/17/2023
Fall Early Learning Assessment Collection (FY23) (2023AGBFL)	A	9/22/2022	3/31/2023
Fall 3rd Gr ELA and Reading Collection (FY23) (2023AGNFL)	A	10/20/2022	3/3/2023
Child Outcome Summary Assessment Collection (FY23) (2023AGMFY)	A	10/20/2022	8/25/2023
DPR Growth Assessment Collection (FY23) (2023AGDFY)	A	10/20/2022	7/12/2023
OELPA Assessment Collection (FY23) (2023AGFSP)	A	1/26/2023	8/4/2023
Spring Alternate Assessment Collection (FY23) (2023AALTS)	A	2/9/2023	8/4/2023
Career Tech Accountability Assessment Collection (FY23) (2023ACTSP)	A	2/9/2023	8/4/2023
Other Accountability Assessments (FY23) (2023ANACC)	A	2/9/2023	8/9/2023
Spring End of Course State Assessment Collection (FY23) (2023AGESP)	A	2/23/2023	7/12/2023
Spring State Assessment Grades 3-8 Collection (FY23) (2023AGNSP)	A	2/23/2023	7/12/2023
Spring Early Learning Assessment Collection (FY23) (2023AGBSP)	A	4/20/2023	8/25/2023

EMIS Data Appeals

- EMIS data appeals open immediately after each reporting window ends.
- Schools have about a week to file an appeal if they discover something is incorrect or incomplete.
- Form must be in the “SUPERINTENDENT APPROVED” status to be considered by the Department.



Resources for EMIS Coordinators

- EMIS collection calendars
- EMIS manual
- Data appeals information

EMIS Processing Schedule 2022-2023

**For more information on data reporting,
please visit the Department's EMIS
webpage:**

**[http://education.ohio.gov/Topics/Data/EMIS/
Reporting-Responsibilities](http://education.ohio.gov/Topics/Data/EMIS/Reporting-Responsibilities)**



Data Quality Tool: Secure Data Center

- When schools submit data in EMIS, it can be seen in the Secure Data Center (SDC).
- The reports available in the SDC can be used to review and verify accuracy and completeness of reported data.
- The superintendent of each school receives access to the SDC and decides who else is granted access.
- SDC access is granted as a role in the Ohio Educational Directory System (OEDS).

Secure Data Center Reports

Safe Home About ODE State Agencies Online Services Ohio.gov

Ohio Department of Education

Home

Ohio Department of Education Report Portal

Secure Data Center

- Career and Technical Education**
Reports about Career Tech Education data.
- Student Attendance**
Reports about Absenteeism and Attendance.
- Discipline**
Reports about Disciplinary incidents.
- Teacher and Staff**
Reports about Principals, Teachers and Other Staff.
- Enrollment**
Reports about Student Enrollment.
- Test Result**
Reports about Ohio's State Tests.
- Financial**
Reports about Expenditures and Revenues.
- Value Added**
Reports about Value Added data.
- Graduation**
Reports about High School Graduation Rates.
- Local Report Card**
Reports depicting local report card measures.
- Improving At-Risk K-3 Readers**
Reports about Diagnostic results, K3 Literacy and Third Grade Reading Guarantee.

Ohio Department of Education
877-644-6338 | Sign-up for Alerts | contact.center@education.ohio.gov
Michael DeWine, Governor | Privacy | Jobs | Employees | Site Map | Contact ODE

State Board of Education of Ohio
Laura Kohler, President

For a recorded training on the new Secure Data Center, please visit:
<https://www.youtube.com/watch?v=WYVWTBrcn7A>

Questions?

Submit questions to the
Sponsor Evaluation inbox:

sponsor.evaluation@education.ohio.gov





@OHEducation

