

# *Ohio School Report Card Training Series*



## *Traditional and CTPD Achievement Component*

*Jessica Lauric*  
Office of Accountability

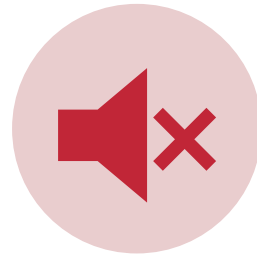


**Department of  
Education &  
Workforce**

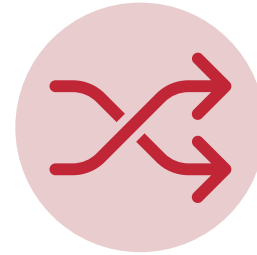
# WELCOME & HOUSEKEEPING



PowerPoint can be found on the [Report Card Training Hub](#)



Videos off and sound muted



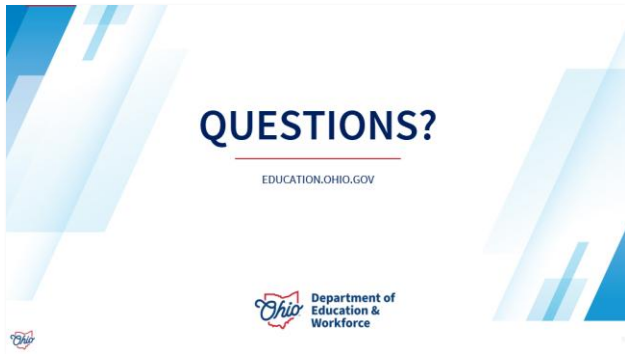
If you have difficulty accessing the chat, try accessing Microsoft Teams in a different way (e.g., in a browser or through the app)



# QUESTION STRUCTURE

## When to Ask Questions?

- Quick Checks after key presentation points.



## What Type of Questions?

### Questions to ask:

- Clarifying questions pertaining to the measure.
- Questions about what has already been covered.

### Questions to NOT ask:

- Questions about student data or scenarios (book a [Report Card Work Session](#) for these questions)

## Where to Ask Questions?

- In the Microsoft Teams Chat.
- Through the Microsoft Teams form.



# ***WE WOULD LOVE YOUR FEEDBACK!***

At the end of today's meeting, please take a few moments to complete our [Feedback Survey](#) to support our continued improvement.

Feedback Form: Traditional &  
CTPD Achievement Component



# Vision

*Ohio students are prepared for success in the real world.*



# Mission

The Ohio Department of Education and Workforce supports Ohio's students, families, and educators to ensure every student gains the knowledge and life skills needed for the future.

# EDUCATION PRIORITIES



**Literacy:** Building a foundation for lifelong success by ensuring every student is reading at or above grade level.



**Accelerating Learning:** Advancing academic achievement for all students through statewide implementation of high-quality instruction, assessments, and supports.



**Student Wellness:** Fostering safe and supportive environments where students feel engaged and equipped to reach their full potential.

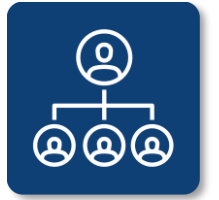


**Workforce Readiness:** Preparing students for success in life and careers through real-world knowledge, skills, and experiences.



**Organizational Effectiveness:** Delivering high-quality services and resources to strengthen Ohio's education community.

# GOAL OF THIS PRESENTATION



## Build Data Literacy on Achievement

Allow individuals to **extract valuable insights**

Make **informed** decisions

Identify opportunities to **celebrate success**

Identify opportunities for **improvement**

**Communicate** your findings in a meaningful way

Ultimately **drive continuous improvement** for Ohio students

# AGENDA

## Who is Included

- **Identify Included Students:** Learn which students are counted in the **Traditional** Achievement component (FAY, first-time test-takers, WKC rules) and which students are included as **Current Year Concentrators** in the **CTPD** Achievement component.

## What is Calculated

- **Understand Achievement Measures:** Compare how the **Performance Index** is calculated for Traditional districts and CTPDs, including acceleration “bumps,” max score differences, and the role of untested students.
- **Understand Technical Skill Attainment (TSA):** Learn how TSA percentages, proficiency determinations, and participation-rate demotions factor into the CTPD Achievement component.

## Validating Data

- **Ensure Data Accuracy:** Learn how to validate data, identify errors, and use tools to ensure accurate gifted data



# WHAT COUNTS IN THE **ACHIEVEMENT** MEASURES?

# *What students count in the Traditional Performance Index Measure?*


*First-Time Test-takers who meet the criteria for Where Kids Count*

For the detailed business rules see the [Understanding Student Placement for Ohio's Differentiated Accountability Systems](#) document.

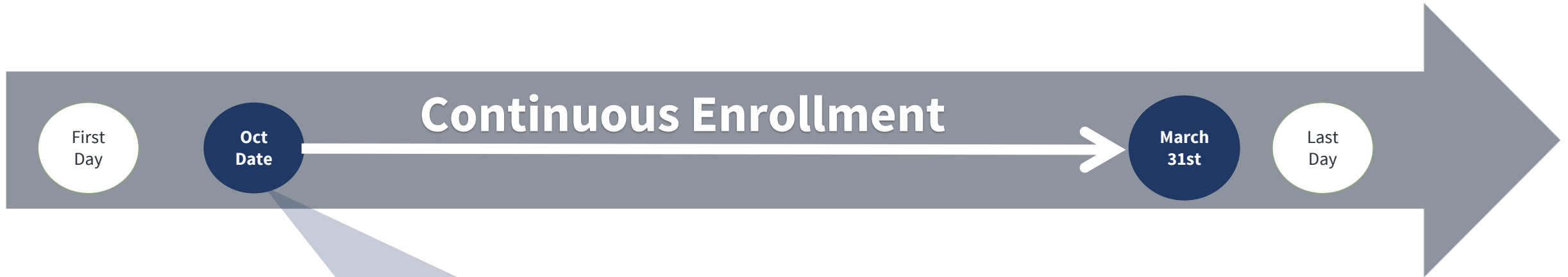
For detailed EMIS reporting and a description of the inclusion criteria, refer to Appendix A of [Achievement Component](#) technical document.

Understanding Student Placement for Ohio's Differentiated Accountability Systems

Where Kids Count Methodology and More  
2024-2025 School Year

 Department of Education & Workforce

# ***FULL ACADEMIC YEAR (FAY)***

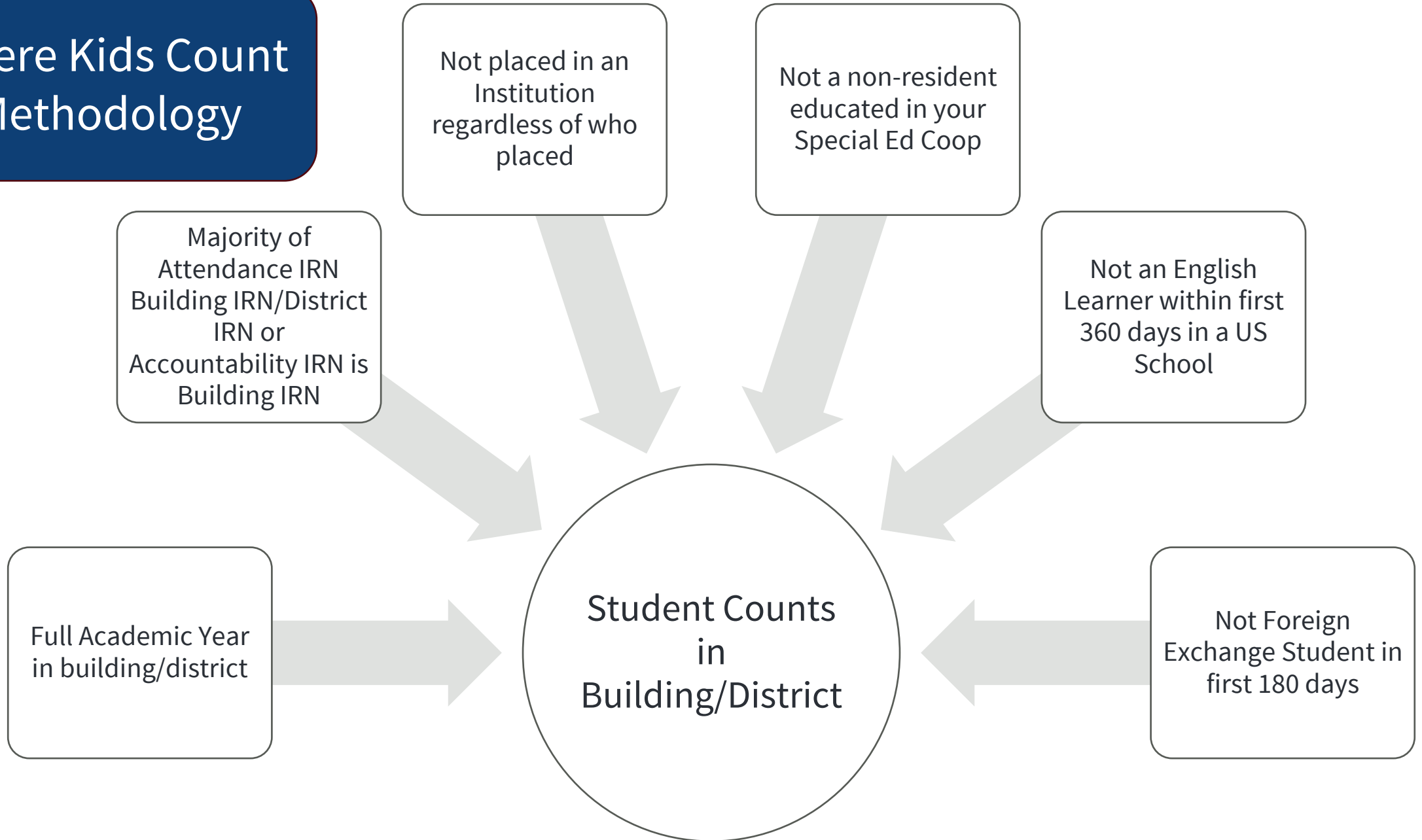


Enrolled in the building or district by the Friday of the first full week of October

Note: For the 2025-2026 Report Cards this would be 10/10/2025



# Where Kids Count Methodology



# *Which students count in the CTPD Achievement Component?*

## *Current Year Concentrators*

For the detailed business rules see the [Understanding Student Placement for Ohio's Differentiated Accountability Systems](#) document.

For detailed EMIS reporting and a description of the inclusion criteria, refer to Appendix A of [Achievement Component](#) technical document.

Understanding Student Placement for  
Ohio's Differentiated Accountability  
Systems

Where Kids Count Methodology  
and More

2023-2024 School Year

**Ohio** Department of  
Education &  
Workforce



# ***UNDERSTANDING CTE PERKINS V CONCENTRATORS***

---

CTE Perkins V Concentrators are secondary students

---

They complete two Workforce Development courses

---

Identification is based on course completion

---

Concentrators can exist before program completion

---

Courses may span different LEAs and years

---

Early concentration is possible before 9th grade



# ***CURRENT YEAR CONCENTRATOR***

Student who has achieved Career Technical Education Concentrator Status and has completed a workforce development course aligned to their Program of Concentration in the current year.

Can be students who met concentrator status in current or prior year

Perkins V students

Reported by district through FN290 element

The Department derives based on course completion if the district does not report

# *What tests count in the Traditional Performance Index Measure?*



## **State Tests**

Grades 3-8 English Language Arts

Grades 3-8 Mathematics

Grades 5 & 8 Science

Grades 3-8 Alternate Assessments



## **End of Course Assessments**

English Language Arts II

Algebra I or Mathematics I

Geometry or Mathematics II

Biology

American/United States

Government

American/United States History

High School Alternate

Assessment



## **Substitute Tests**

Advanced Plus (AP)

International Baccalaureate (IB)

# *What tests count in the CTPD Performance Index Measure?*



## **State Tests**

Grades 7-8 English Language  
Arts

Grades 7-8 Mathematics

Grades 8 Science

Grades 7-8 Alternate  
Assessments



## **End of Course Assessments**

English Language Arts II  
Algebra I or Mathematics I  
Geometry or Mathematics II  
Biology  
American/United States  
Government

American/United States History  
High School Alternate Assessment



## **Substitute Tests**

Advanced Plus (AP)  
International Baccalaureate  
(IB)

# WHAT STUDENTS COUNT AS UNTESTED

- [Ohio Revised Code 3302.01\(A\)\(2\)](#) requires that untested be included
  - Schools and Districts receive ZERO points
- Students can be included for multiple years if required to be assessed and **does not sit** for the assessment each year

• Score Not Reported  
Reasons that count: A, B, C, D, E, F, P, 5

• Score Not Reported  
Reasons that count: A, B, C, D, E, F, P, 5

Grade 3-8  
State  
Assessment

End of  
Course  
Assessment

Grade 3-8  
Alternate  
Assessment

High School  
Alternate  
Assessment

• Score Not Reported  
Reasons that count: A, B, C, D, E, F, S, 5

• Score Not Reported  
Reasons that count: A, B, C, D, E, F, S, 5

# ***DO RETAKES COUNT IN TRADITIONAL PERFORMANCE INDEX?***

Taken in the Same Year

- Highest Score is used for Accountability

Taken in Separate Years

- End of course assessment retakes are not included if the previous test was already included for accountability purposes
- Grade 3-8 assessments are included

# DO RETAKES COUNT IN CTPD PERFORMANCE INDEX?

Taken in the Same Year

- Highest Score is used for Accountability

Taken in Separate Years

- End of course assessment retakes are not included if the previous test was already included for accountability purposes
- Grade 3-8 assessments are included

Taken in Prior Year

- First time high-school end of course assessment results (from the prior year) for current year concentrators are included.
- Prior year tests for middle grade (7-8) students (who are concentrators in the current year) are not included.

# ***SUBSTITUTE ASSESSMENTS***

## **Science**

- AP02 Biology
- AP05 Chemistry
- AP35 Physics 1
- AP36 Physics 2
- AP23 Physics C: Electricity and Magnetism
- AP24 Physics C: Mechanics
- IB10 Biology Higher Level
- IB50 Biology Standard Level
- IB12 Chemistry - Higher Level
- IB52 Chemistry - Standard Level
- IB16 Design Technology - Higher Level
- IB 56 Design Technology - Standard Level
- IB 58 Environmental Systems and Societies
- IB 49 Physics – Higher Level
- IB 77 Physics - Standard Level
- IB 93 Sports, Exercise and Health Science - Higher Level
- IB 94 Sports, Exercise and Health Science - Standard Level

## **Government**

- AP32 US Government and Politics
- IB91 Global Politics Higher Level
- IB92 Global Politics Standard Level

## **History**

- AP33 US History
- IB26 History 2: Americas Higher Level
- AP32 U.S. Government and Politics



# AP/IB RESULTS TO PERFORMANCE LEVELS

## AP Assessments

Score on AP	Performance Level
1	Limited
N/A	Basic
2	Proficient
3	Accomplished
4 or 5	Advanced

## IB Assessments

Score on IB	Performance Level
1	Limited
N/A	Basic
2 or 3	Proficient
4 or 5	Accomplished
6 or 7	Advanced

# What tests count in the Technical Skill Attainment?

Students who retake a CTE Technical assessment are included each time so long as all other accountability rules are met. The highest score will be utilized in the calculation of the Pathway Test Score

Career Technical Assessments that align with Career Pathway per [CTE Program/Assessment Matrix](#)

WebXams

Substitute Tests

Industry-Recognized Credential

CTE College Credit Plus course



## ***HOW MANY STUDENTS MUST WE HAVE FOR TECHNICAL SKILLS TO BE CALCULATED?***

- 10 accountable students taking one or more assessments

## ***HOW MANY STUDENTS MUST WE HAVE FOR PERFORMANCE INDEX?***

- 10 accountable students taking one or more assessments

# QUESTIONS?

---

EDUCATION.OHIO.GOV



**Department of  
Education &  
Workforce**

# WHAT IS CALCULATED IN THE **ACHIEVEMENT** COMPONENTS

# ***ACHIEVEMENT AT A GLANCE: TRADITIONAL VS. CTPD***

## ***TRADITIONAL***

- Rating is 100% Performance Index
- Performance Indicators now **report-only**

## ***CTPD***

- Rating is 80% Technical Skill Attainment  
20% Performance Index
- Potential 1 or 2-star demotion for low participation

# *Performance Levels and Points Awarded*

<b>PERFORMANCE LEVEL</b>	<b>WEIGHT</b>
<b>Advanced Plus</b>	1.3
<b>Advanced</b>	1.2
<b>Accomplished</b>	1.1
<b>Proficient</b>	1.0
<b>Basic</b>	0.6
<b>Limited</b>	0.3
<b>Untested</b>	0.0

# *Achieving the Advanced Plus and other “bumps” in performance level*

## Accelerated Students

Students on Formal Written Acceleration Plans are rewarded under state law.

## EMIS Reporting Requirements

Students must be included in the Student Acceleration Record.  
Must be reported annually with FB100 = Y.

## Subjects Eligible

For whole grade acceleration, tests in all subjects are eligible for “bump” in performance level.  
For subject-specific acceleration, only the test for the accelerated subject is eligible.

# ***CALCULATING TRADITIONAL MAX PERFORMANCE INDEX***

- The maximum Performance Index is the benchmark score against which all schools and districts are measured
- Schools and Districts are calculated separately

Identify the **top 2% of Performance Index** scores statewide for a given year.

Compute the **average** of these top 2% scores.

The result is set as the **maximum possible score** for that year.

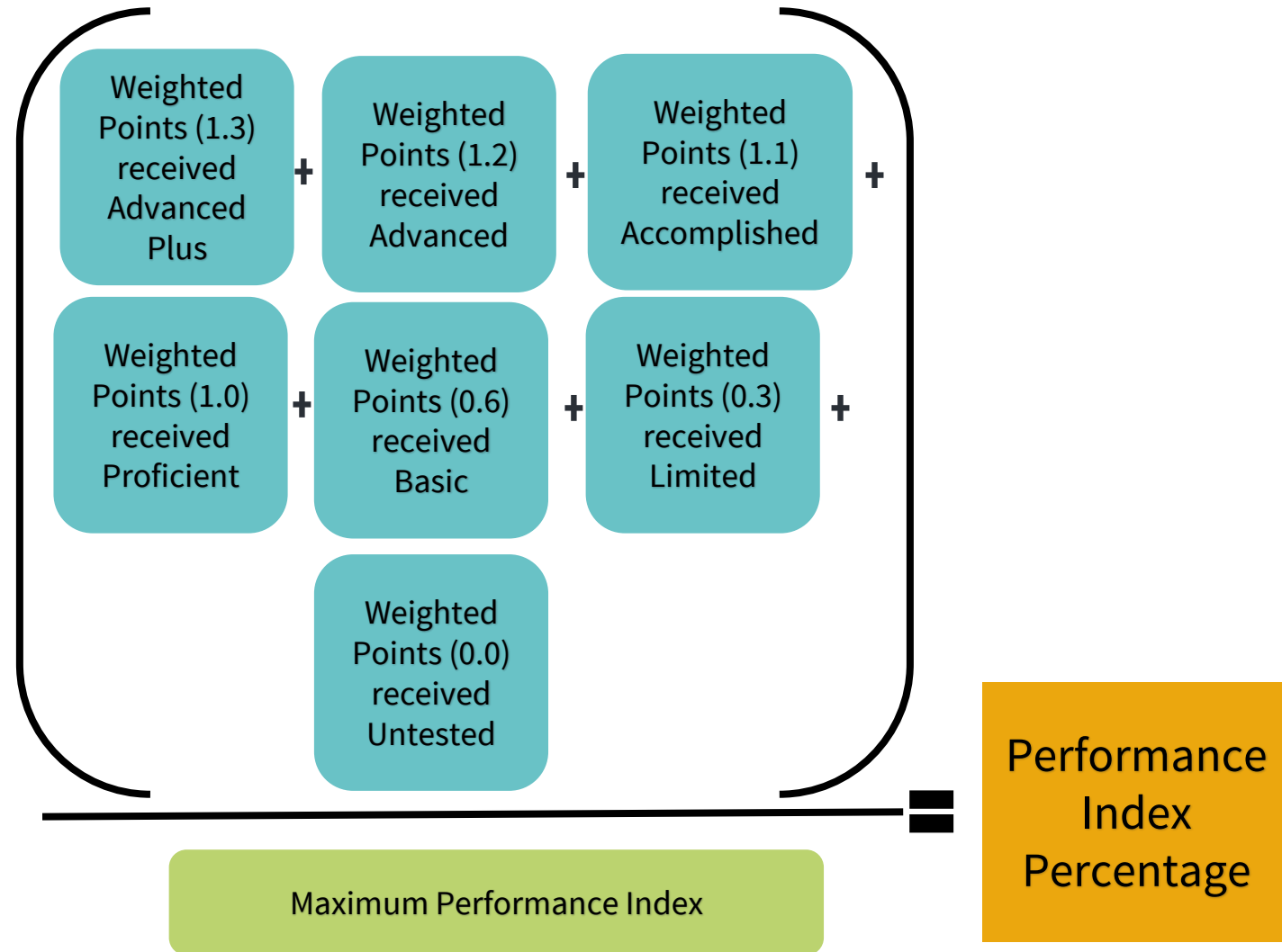
# ***MAX CTPD PERFORMANCE INDEX***

- CTPD Max Performance Index is 120
- Unlike the Traditional Report Card, Maximum Performance Index does not change from year to year

CTPD Maximum  
Performance  
Index (120)

# PERFORMANCE INDEX MEASURE CALCULATION

The weighted scores for each performance level are summed to create an overall Performance Index Score which is then divided by the Maximum Performance Index to create Performance Index Percentage



# CTPD PERFORMANCE INDEX RATING SCALE AND DESCRIPTIONS

CTPD Performance Index Percentage	Rating	Rating Description
Greater than or equal to 85% of Max Score	<b>5 Stars</b>	Significantly exceeds state standards in academic achievement
Greater than or equal to 75% but less than 85% of Max Score	<b>4 Stars</b>	Exceeds state standards in academic achievement
Greater than or equal to 60% but less than 75% of Max Score	<b>3 Stars</b>	Meets state standards in academic achievement
Greater than or equal to 45% but less than 60% of Max Score	<b>2 Stars</b>	Needs support to meet state standards in academic achievement
Less than 45% of Max Score	<b>1 Star</b>	Needs significant support to meet state standards in academic achievement

# WHAT DOES TECHNICAL SKILL ATTAINMENT MEASURE?

Purpose	Technical Assessments	Scoring	Calculation
<ul style="list-style-type: none"><li>• Evaluates the proficiency of Current Year Career Technical Education (CTE) Concentrators</li></ul>	<ul style="list-style-type: none"><li>• Students take technical Assessments aligned to course<ul style="list-style-type: none"><li>• WebXams</li><li>• Industry-recognized credentials</li><li>• CTE College Credit Courses</li></ul></li></ul>	<ul style="list-style-type: none"><li>• The cumulative score from these assessments determines the student's proficiency level</li></ul>	<ul style="list-style-type: none"><li>• Numerator: Number of CTE Concentrators who scored proficient or higher on the cumulative technical assessment aligned to their pathway.</li><li>• Denominator: Number of CTE Concentrators who took the aligned technical assessment.</li></ul>

# EXAMPLE CALCULATION

Assessment Year	Assessment Subject Code	Proficient Benchmark	Advanced Benchmark	Student Assessment Score
2022	AAL5	59	91	73
2022	AAM5	63	79	88
2022	AAN5	62	93	85
2023	ADH0	59	76	73
<b>Summative Score</b>		$59 + 63 + 62 + 59 = 243$	$91 + 79 + 93 + 76 = 339$	$73 + 88 + 85 + 73 = 319$
		$243/4 = 60.8$	$339/4 = 84.8$	$319/4 = 79.8$

Student is Proficient



# ***TECHNICAL SKILL ATTAINMENT CALCULATION***

Number of CY CTE Concentrators who received a Pathway Test Score of Proficient or higher

Number of CY CTE Concentrators in the year who were tested

=

Preliminary Technical Skill Attainment Percentage



# WHAT IS THE TECHNICAL SKILL ATTAINMENT PARTICIPATION CALCULATION?

Number of CY CTE Concentrators whom an aligned technical assessment record was reported

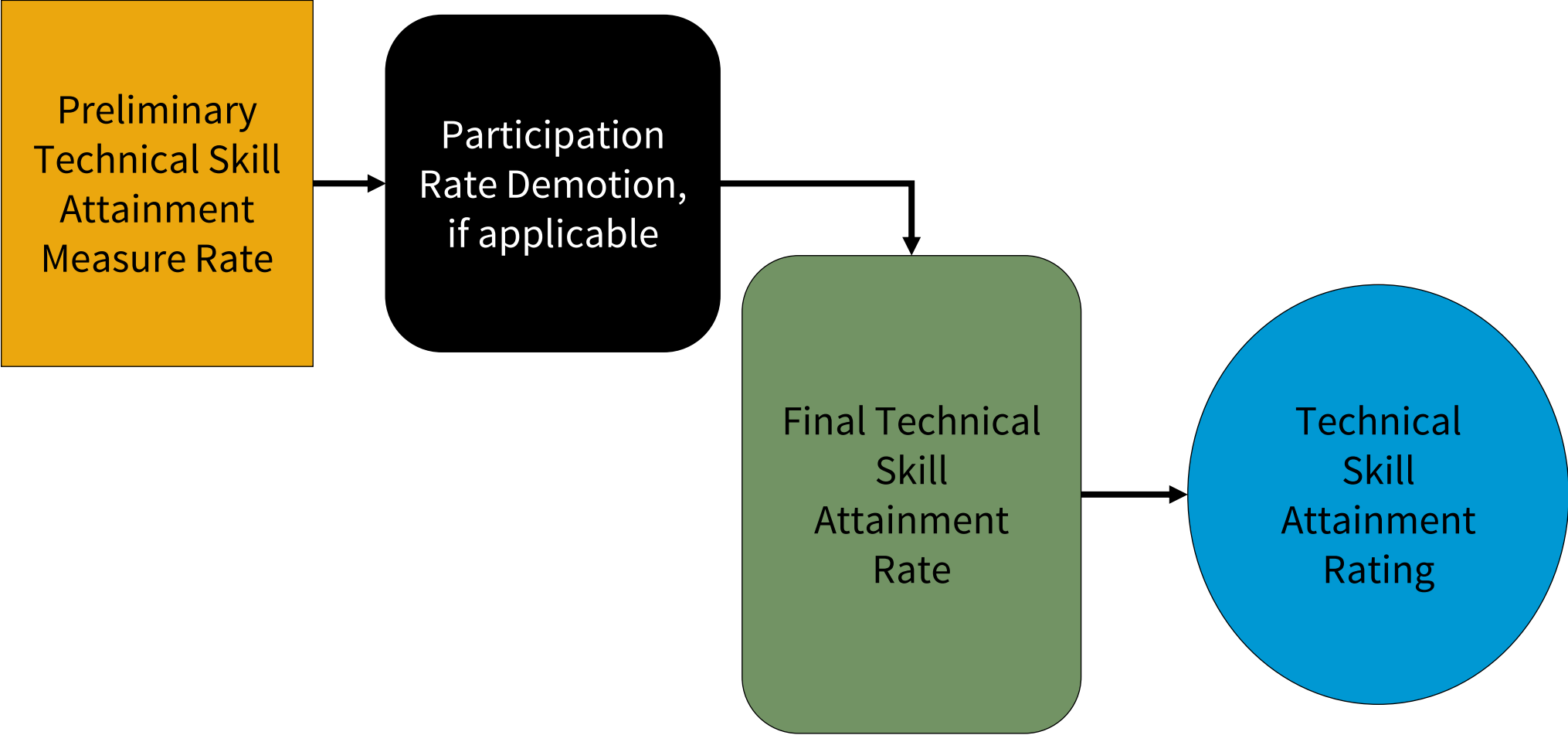
Number of CY CTE Concentrators in the year in a pathway with a required technical assessment

=

Technical Skill Attainment Participation Percentage

Demotion	Participation Rate
1 Star Demotion	Below 90%
2 Star Demotion	Below 80%

# TECHNICAL SKILL ATTAINMENT CALCULATION



# TECHNICAL SKILL ATTAINMENT RATING AND DESCRIPTION

Final Technical Skill Attainment Percentage	Rating	Rating Description
Greater than or equal to 90%	<b>5 Stars</b>	Significantly exceeds state standards in technical achievement
Greater than or equal to 80% but less than 90%	<b>4 Stars</b>	Exceeds state standards in technical achievement
Greater than or equal to 70% to but less than 80%	<b>3 Stars</b>	Meets state standards in technical achievement
Greater than or equal to 60% but less than 70%	<b>2 Stars</b>	Needs support to meet state standards in technical achievement
Less than 60%	<b>1 Star</b>	Needs significant support to meet state standards in technical achievement



# QUESTIONS?

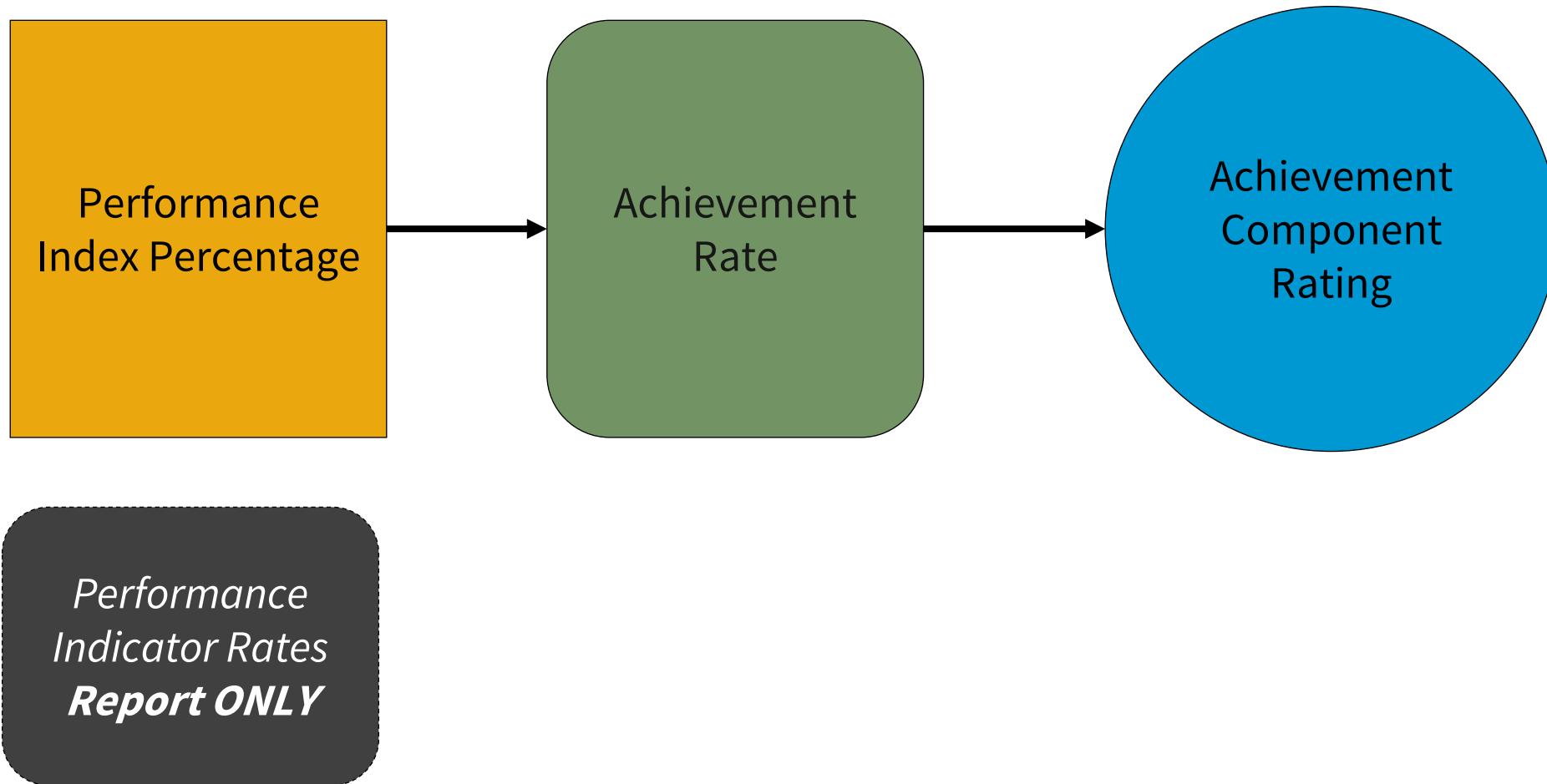
---

EDUCATION.OHIO.GOV



**Department of  
Education &  
Workforce**

# TRADITIONAL ACHIEVEMENT COMPONENT CALCULATION

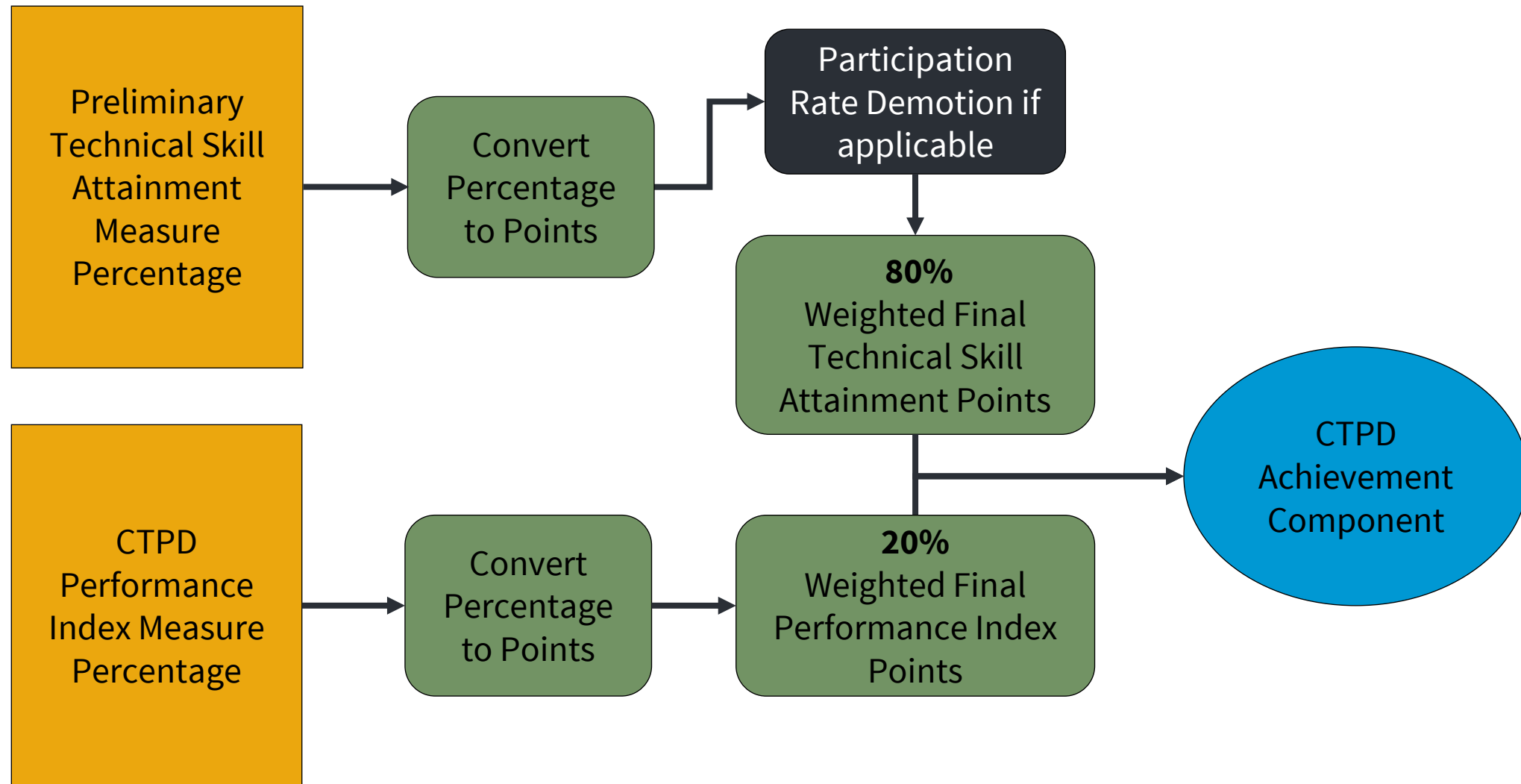


# TRADITIONAL ACHIEVEMENT COMPONENT RATING SCALE AND DESCRIPTIONS

ACHIEVEMENT COMPONENT RATING SCALE AND DESCRIPTIONS		
Achievement Rate	Rating	Rating Description
Greater than or equal to 90%	<b>5 Stars</b>	Significantly exceeds state standards in academic achievement
Greater than or equal to 80% but less than 90%	<b>4 Stars</b>	Exceeds state standards in academic achievement
Greater than or equal to 70% but less than 80%	<b>3 Stars</b>	Meets state standards in academic achievement
Greater than or equal to 50% but less than 70%	<b>2 Stars</b>	Needs support to meet state standards in academic achievement
Less than 50%	<b>1 Star</b>	Needs significant support to meet state standards in academic achievement



# CTPD ACHIEVEMENT COMPONENT CALCULATION



# TECHNICAL SKILL ATTAINMENT PERCENTAGE TO POINTS SCALE

Measure Grade Scale	Percentage	Points
90% - 100% - 5 Stars	>=97.5% to 100%	5
	>=95% but <97.5%	4.75
	>=92.5 but <95%	4.5
	>=90% but <92.5%	4.25
80% - 89.9% - 4 Stars	>=87.5% but <90%	4
	>=85% but <87.5%	3.75
	>=82.5% but <85%	3.5
	>=80% but <82.5%	3.25
70% - 79.9% - 3 Stars	>=77.5% but <80%	3
	>=75% but <77.5%	2.75
	>=72.5% but <75%	2.5
	>=70% but <72.5%	2.25
60% - 69.9% - 2 Stars	>=67.5% but <70%	2
	>=65% but <67.5%	1.75
	>=62.5% but <65%	1.5
	>=60% but <62.5%	1.25
<60% - 1 Star	>=45% but <60%	1
	>=30% but <45%	0.75
	>=15% but <30%	0.5
	>=0% but <15%	0

One Star demotion- assigned as the highest point value of the next star rating down

Two Star demotion- assigned as the highest point value of the two-star ratings down



# PERFORMANCE INDEX PERCENTAGE TO POINTS SCALE

Measure Grade Scale	Percentage	Points
85 - 100% - 5 Stars	$\geq 96.25$ to 100%	5
	$\geq 92.5\%$ but $< 96.25\%$	4.75
	$\geq 88.75\%$ but $< 92.5\%$	4.5
	$\geq 85\%$ but $< 88.75\%$	4.25
75 - 84.9% - 4 Stars	$\geq 82.43\%$ but $< 85\%$	4
	$\geq 79.95\%$ but $< 82.43\%$	3.75
	$\geq 77.48\%$ but $< 79.95\%$	3.5
	$\geq 75\%$ but $< 77.48\%$	3.25
60 - 74.9% - 3 Stars	$\geq 71.18\%$ but $< 75\%$	3
	$\geq 67.45\%$ but $< 71.18\%$	2.75
	$\geq 63.73\%$ but $< 67.45\%$	2.5
	$\geq 60\%$ but $< 63.73\%$	2.25
45 - 59.9% - 2 Stars	$\geq 56.18\%$ but $< 60\%$	2
	$\geq 52.45\%$ but $< 56.18\%$	1.75
	$\geq 48.73\%$ but $< 52.45\%$	1.5
	$\geq 45\%$ but $< 48.73\%$	1.25
$< 45\%$ - 1 Star	$\geq 33.75\%$ but $< 45\%$	1
	$\geq 22.5\%$ but $< 33.75\%$	0.75
	$\geq 11.25\%$ but $< 22.5\%$	0.5
	$\geq 0\%$ but $< 11.25\%$	0



# CTPD ACHIEVEMENT COMPONENT RATING SCALE AND DESCRIPTIONS

CTPD Achievement COMPONENT RATING		
Total Weighted Points Earned	Rating	Rating Description
Greater than or equal to 4.125 Points	<b>5 Stars</b>	Significantly exceeds state standards in technical and academic achievement
Greater than or equal to 3.125 points but less than 4.125 points	<b>4 Stars</b>	Exceeds state standards in technical and academic achievement
Greater than or equal to 2.125 but less than 3.125 points	<b>3 Stars</b>	Meets state standards in technical and academic achievement
Greater than or equal to 1.125 points but less than 2.125 points	<b>2 Stars</b>	Needs support to meet state standards in technical and academic achievement
Less than 1.125 points	<b>1 Star</b>	Needs significant support to meet state standards in technical and academic achievement



# KEY DIFFERENCES

Feature	Traditional	CTPD
<b>Who Counts</b>	FAY and first-time test takers	Current Year Concentrators
<b>Core Measures</b>	Performance Index only	80% Technical Skill Attainment 20% Performance Index
<b>Max PI</b>	Varies (top 2% statewide)	Always 120
<b>Participation Penalty</b>	None (Participation penalty applied to Gap Closing Component)	Possible 1–2-star demotion
<b>AP/IB Substitutes</b>	Included	Included
<b>Untested</b>	Included	Included

# Time for a Brain Break!



# ***REPORT CARD TOOLS AVAILABLE***

- [Traditional Report Card Calculator](#)
- [Component Calculator for CTPD Report Cards](#)



# VALIDATING DATA FOR THE **ACHIEVEMENT** COMPONENT

# POTENTIAL IMPACT ON ACHIEVEMENT RATING

Example: At Evergreen Elementary, the fifth- grade students were all reported with a Majority of Attendance element equal to the District IRN. None of the 5th grade students ELA, Math, or Science assessments counted in the schools

### Data Reporting Error

Measure	Percent	Weight	Weighted Percent
Performance Index	<b>83.8%</b>	x 100%	= 83.8%
Performance Indicators			Not Rated
<b>Achievement Rate</b>			<b>83.8%</b>

### Correctly Reported Data

Measure	Percent	Weight	Weighted Percent
Performance Index	<b>98.0%</b>	x 100%	= 98.0%
Performance Indicators			Not Rated
<b>Achievement Rate</b>			<b>98.0%</b>

### Achievement Rating Scale

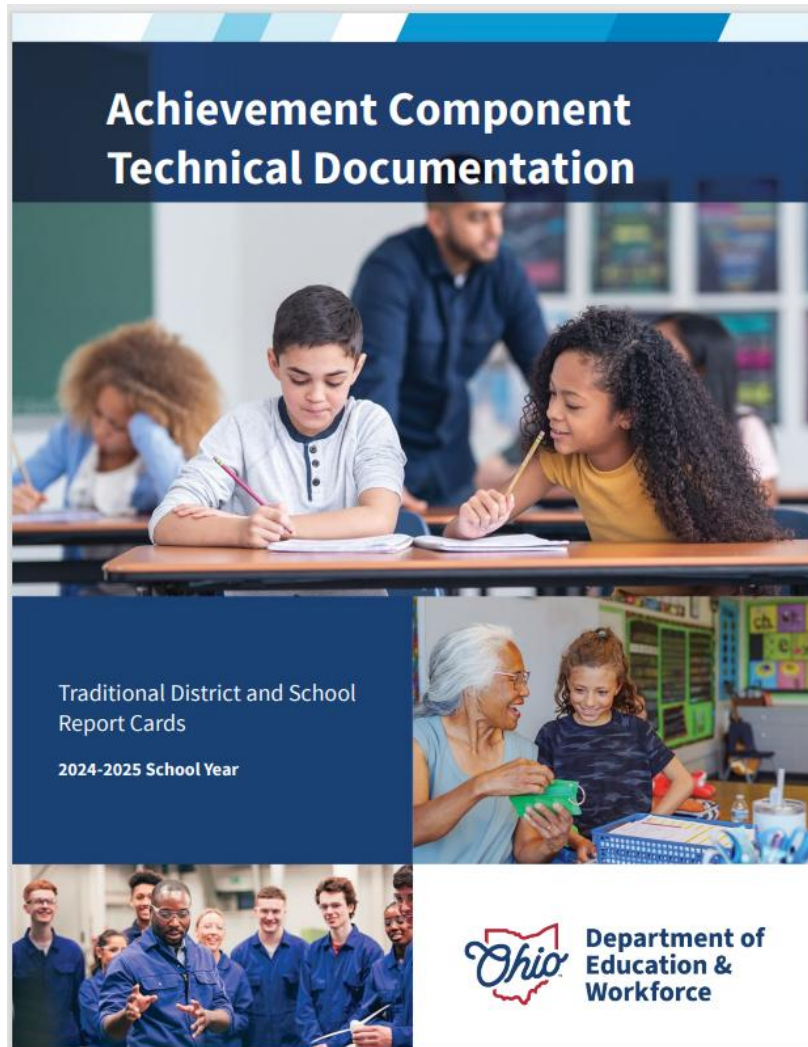
Achievement Rate	Rating
Greater than or equal to 90%	<b>5 Stars</b>
Greater than or equal to 80% but less than 90%	<b>4 Stars</b>
Greater than or equal to 70% but less than 80%	<b>3 Stars</b>
Greater than or equal to 50% but less than 70%	<b>2 Stars</b>
Less than 50%	<b>1 Star</b>

### Achievement Rating Scale

Achievement Rate	Rating
Greater than or equal to 90%	<b>5 Stars</b>
Greater than or equal to 80% but less than 90%	<b>4 Stars</b>
Greater than or equal to 70% but less than 80%	<b>3 Stars</b>
Greater than or equal to 50% but less than 70%	<b>2 Stars</b>
Less than 50%	<b>1 Star</b>



# VALIDATE ACCOUNTABILITY BUSINESS RULES



## ACHIEVEMENT

The Achievement Component Technical Document provides a comprehensive guide to understanding how academic achievement is measured in Ohio's traditional district and school report cards. It details the two measures used: the Performance Index and the Performance Indicators, with the former being used to assign the Achievement Component Rating. The document includes an overview of measures, business rules, calculation methods, and detailed inclusion criteria, ensuring transparency and clarity in the evaluation of student performance on Ohio's State Tests. It serves as a crucial resource for educators and administrators in interpreting and utilizing report card data effectively.

The Performance Index measure as defined in [ORC 3302.01\(A\)](#) and [3302.03\(D\)\(1\)\(c\)](#) uses the performance level results for students in grades 3 through high school on Ohio's State Tests. The Performance Index score accounts for the level of achievement of every student, not just whether they are "proficient." Each test a student takes is assigned an achievement level based on the test score with higher test scores resulting in higher achievement levels. On the Performance Index, the higher performance levels receive larger weights in the calculation – but all achievement levels are included. More information about test achievement levels is available annually in the [Understanding Ohio's State Tests Reports](#) guidance document.

The Performance Indicators measure ([ORC 3302.02\(A\)](#)) is a report-only measure within this component – meaning the data does not factor into the rating determination. The Performance Indicators measure reports the percentage of students scoring proficient or higher on each of Ohio's State Tests disaggregated by grade level and subject.

» [Achievement Technical Document](#) 

# FINAL CORRECTION OPPORTUNITY STUDENT DATA

- [2.2 Student Demographic Record \(GI\) 9.1](#)
- [2.3 Student Demographic - Race Detail Record \(GJ\) 8.0](#)
- [2.4 Student Standing Record \(FS\) 14.1](#)
- [2.5 Student Attributes - Effective Date Record \(FD\) 14.1](#)
- [2.6 Student Attributes - No Date Record \(FN\) 15.1](#)
- [2.7 Student Acceleration Record \(FB\) 7.0](#)
- [2.10 Student Gifted Education Record \(GG\) 8.0](#)

## FY26 STUDENT

Required to Approve: **Superintendent**

Opens: **July 16, 2026**

Closes: **July 24, 2026**

### FY26 Collections Included

- » FY26 End of Year Student Collection (2026S3TRD)
- » FY26 SOES End of Year Student Collection (2026SBODE)

### Impacted Organizations

- » Traditional districts
- » Community schools
- » JVSs
- » ESCs
- » STEMs

- » Examples of student data impacting the Report Card and/or funding could include, but are not limited to: attendance, enrollment, percent of time, sent to/how received, RIMP codes, attributes (LEP, disability, disadvantage, grade level, etc.), gifted, majority of attendance, accountability IRN, accelerated, CTE program of concentration, etc.
- » This is the **only opportunity** for districts to correct data in their FY26 student data collection. A district's own student data will not be subject to correction during the FY26 funding final correction opportunity. Districts are encouraged to leverage all EMIS, funding and report card-related reports available to assess the accuracy of their student data before the deadline. The final funding correction opportunity will only include cross-district flags (such as community school flags and overlapping enrollment) that impact funding.
- » [CTE Program of Concentration Appeal Guidance](#)
- » **Deadline to submit corrected data in EMIS for approved final correction opportunities is July 31 at 5 p.m.**



# VALIDATING STUDENT DATA

- [Current Enrollment Headcount Summary and Detail, Level 1](#)
- [Where Kids Count \(WKCD-001\), Level 2](#)
- [GNIS 0027, Received Files](#)

Result Code	Result Code Description	Adjustment	WKC Level
WK0001	Student enrolled in one building within a district for a full academic year	WKC IRN is set to building IRN when MOA IRN and Accountability IRN are the same.	Student counts at building where FAY criterion is met. Also counts at district, and state levels, for % proficient, performance index, and attendance rate calculations.
WK0002	Student enrolled in one building within a district for a full academic year and the Accountability IRN has been applied	WKC IRN is set to building IRN reported in Accountability IRN when MOA IRN and Accountability IRN are not the same.	Student counts at building level in building indicated in "Accountability IRN" by educating entity. Also counts at district, and state levels, for % proficient, performance index, and attendance rate calculations.
WK0003	Student enrolled in the district, but not in one building within the district for a full academic year	WKC IRN is set to district IRN to match MOA IRN.	Student counts at district and state level for % proficient, performance index, and attendance rate calculations.
WK0004	Student is NOT enrolled in the district for a full academic year	WKC IRN is set to ***** to match MOA IRN.	Student counts at state level for % proficient, performance index, and attendance rate calculations.
WK0005	Student placed in an institution either via a court placement or parent placement	WKC IRN is set to ***** when: How Received = P, Q, or T; <b>OR</b> How Received = P, Q, or T and Sent Reason = CT, JV, MR, OS, PS	Student counts at state level for % proficient, performance index, and attendance rate calculations.
WK0006	Student participates in a special education cooperative program in another district; and is in the educating district for a full academic year	WKC IRN is set to How Received IRN when: MOA IRN ≠ *****, How Received = B, and District Relationship = 1; <b>OR</b> MOA IRN ≠ *****, How Received = B, and Sent Reason = CT, JV, MR, OS, PS	Student counts in resident/sending district for % proficient, performance index, and attendance rate calculations. Student counts at educating district for participation rate.
WK0007	Student participates in the Autism Scholarship or Jon Peterson Scholarship	WKC IRN is set to *****, overriding MOA/Accountability IRN reporting.	Student counts in state-level calculations, if student has attendance or takes a statewide test in a public district.
WK0008	Recently arrived LEP student who has been enrolled in US schools less than 2 years	WKC IRN is set to ***** when Limited English Proficiency (LEP) = L or S.	Student counts in state-level calculations for % proficient, performance index, and participation rate for Reading.
WK0010	Majority of Attendance IRN not reported – No WKC IRN assigned	No WKC IRN can be assigned.	Student is not included in any calculations.
WK0011	Sent Reason - CO - Court Placed Out of State, LEA is responsible for paying cost of education	WKC IRN is set to *****, overriding MOA/Accountability IRN reporting.	Student counts in state-level calculations, if student has attendance or takes an Ohio statewide test.
WK0012	Recently arrived Foreign Exchange student	If Foreign Exchange Student Element = Y, and SSID not in previous year data, then WKC IRN is set to *****.	Student counts in state-level calculations for % proficient and performance index. Student counts in building/district for participation rate and attendance rate.



# FINAL CORRECTION OPPORTUNITIES ASSESSMENT DATA

## FY26 FALL 3RD GRADE ELA & READING

Required to Approve: **Superintendent**

Opens: **July 16, 2026**

Closes: **July 24, 2026**

### FY26 Collections Included

» FY26 Fall 3rd Gr ELA and Reading Collection (2026AGNFL)

» **Deadline to submit correction opportunities is July 31 at 5**

## FY26 SPRING STATE ASSESSMENT GRADES 3-8

Required to Approve: **Superintendent**

Opens: **July 16, 2026**

Closes: **July 24, 2026**

### FY26 Collections Included

» FY26 Spring State Assessment Collection (2026AGNSP)

» **Deadline to submit correction opportunities is July 31 at 5**

### Impacted Organizations

## FY26 SUMMER 3RD GRADE READING

Required to Approve: **Superintendent**

Opens: **TBD**

Closes: **TBD**

### FY26 Data Included

» Summer 3rd grade reading test vendor file data: Student Grade Level, Test Accommodation Code, and Score

### Impacted Organizations

» Traditional districts  
» Community schools  
» STEMs



# FINAL CORRECTION OPPORTUNITY ASSESSMENT DATA (CONTINUED)

## FY26 OTHER ACCOUNTABILITY ASSESSMENT

Required to Approve: **Superintendent**

Opens: **Aug. 10, 2026**

Closes: **Aug. 14, 2026**

### FY26 Collections Included

- » FY26 Other Accountability Asses: (2026ANACC)

» **Deadline to submit corrected d opportunities is Aug. 21 at 5 p.**

## FY26 ALTERNATE ASSESSMENT

Required to Approve: **Superintendent**

Opens: **Aug. 6, 2026**

Closes: **Aug. 14, 2026**

### FY26 Collections Included

- » FY26 Spring Alternate Assessment Colle

» **Deadline to submit corrected data in opportunities is Aug. 21 at 5 p.m.**

## FY26 SPRING END OF COURSE ASSESSMENT

Required to Approve: **Superintendent**

Opens: **July 16, 2026**

Closes: **July 24, 2026**

### FY26 Collections Included

- » FY26 Spring End of Course State Assessment Collection (2026AGESP)

### Impacted Organizations

- » Traditional districts
- » Community schools
- » JVSs
- » STEMs

» **Deadline to submit corrected data in EMIS for approved final correction opportunities is July 31 at 5 p.m.**



# VALIDATING ASSESSMENT DATA

Example: Grade 3 English language arts  
[Know the Test Date](#) Information

## Fall

- **Test Dates:** Mid October through Early November
- **Results Available:** Early December through Mid-December
- **How Reported:** Results uploaded into SIS and reported in EMIS in the Fall 3<sup>rd</sup> Gr ELA and Reading Collection

## Spring

- **Test Dates:** Mid March through Mid April
- **Results Available:** Mid May through Mid June
- **How Reported:** Results uploaded into SIS and reported in EMIS in the Spring State Assessment Grades 3-8 Collection

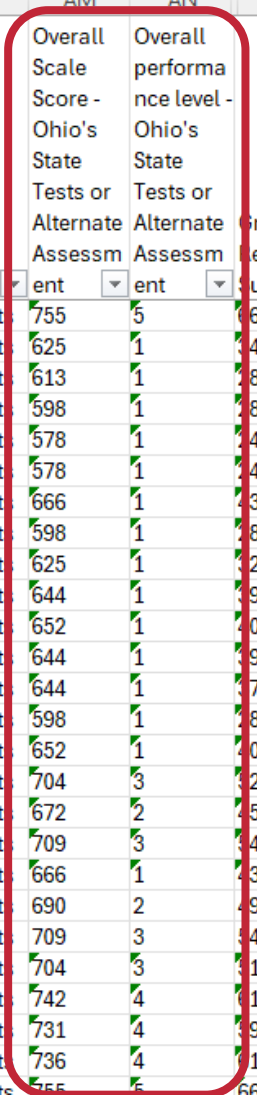
## Summer

- **Test Dates:** Mid July
- **Results Available:** Late July through Mid Aug
- **How Reported:** Results directly from Vendor and uploaded into EMIS by Department

# EXAMPLE DOWNLOAD DATA FROM ASSESSMENT VENDOR

\*Note: The Centralized Reporting System (CRS) and Ohio's Education Management Information System (EMIS) are **not** linked. There is no automated process that transmits scores from CRS to EMIS. It is the responsibility of each district to submit its students' scores into EMIS. Districts that receive student scores are responsible for sharing them with other districts that have authorized access to the scores when appropriate.

SSID	Enrolled grade	Administration	Test Date	Test name	Overall Scale Score - Ohio's State Tests or Alternate Assessment	Overall performance level - Ohio's State Tests or Alternate Assessment	Grade 3 Reading Subscore	Third Grade Reading Guarantee Promotion Score
DEMO08001	03	Spring2024	20240514	Grade 3 English Language Arts	755	5	66	Y
DEMO08002	03	Spring2024	20240514	Grade 3 English Language Arts	625	1	34	N
DEMO08003	03	Spring2024	20240514	Grade 3 English Language Arts	613	1	28	N
DEMO08004	03	Spring2024	20240514	Grade 3 English Language Arts	598	1	28	N
DEMO08005	03	Spring2024	20240514	Grade 3 English Language Arts	578	1	24	N
DEMO08006	03	Spring2024	20240514	Grade 3 English Language Arts	578	1	24	N
DEMO08007	03	Spring2024	20240514	Grade 3 English Language Arts	666	1	33	N
DEMO08008	03	Spring2024	20240514	Grade 3 English Language Arts	598	1	28	N
DEMO08009	03	Spring2024	20240514	Grade 3 English Language Arts	625	1	32	N
DEMO08010	03	Spring2024	20240514	Grade 3 English Language Arts	644	1	39	N
DEMO08011	03	Spring2024	20240514	Grade 3 English Language Arts	652	1	40	N
DEMO08012	03	Spring2024	20240514	Grade 3 English Language Arts	644	1	39	N
DEMO08013	03	Spring2024	20240514	Grade 3 English Language Arts	644	1	37	N
DEMO08014	03	Spring2024	20240514	Grade 3 English Language Arts	598	1	28	N
DEMO08015	03	Spring2024	20240514	Grade 3 English Language Arts	652	1	40	N
DEMO08016	03	Spring2024	20240514	Grade 3 English Language Arts	704	3	42	Y
DEMO08017	03	Spring2024	20240514	Grade 3 English Language Arts	672	2	35	N
DEMO08018	03	Spring2024	20240514	Grade 3 English Language Arts	709	3	44	Y
DEMO08019	03	Spring2024	20240514	Grade 3 English Language Arts	666	1	33	N
DEMO08020	03	Spring2024	20240514	Grade 3 English Language Arts	690	2	39	Y
DEMO08021	03	Spring2024	20240514	Grade 3 English Language Arts	709	3	44	Y
DEMO08022	03	Spring2024	20240514	Grade 3 English Language Arts	704	3	41	Y
DEMO08023	03	Spring2024	20240514	Grade 3 English Language Arts	742	4	41	Y
DEMO08024	03	Spring2024	20240514	Grade 3 English Language Arts	731	4	39	Y
DEMO08025	03	Spring2024	20240514	Grade 3 English Language Arts	736	4	41	Y
DEMO08026	03	Spring2024	20240514	Grade 3 English Language Arts	755	5	66	Y



# VALIDATING DATA WITH EMIS REPORTS

## Assessment Collections

Summer and Fall End of Course Assessment Collection (FY26) (2026AGEFL)	A	9/18/2025	3/20/2026
Kindergarten Readiness Assessment Collection (FY26) (2026AGOFL)	A	9/18/2025	3/27/2026
Fall 3rd Gr ELA and Reading Collection (FY26) (2026AGNFL)	A	10/16/2025	3/6/2026
Child Outcome Summary Assessment Collection (FY26) (2026AGMFY)	A	10/16/2025	8/21/2026
DPR Growth Assessment Collection (FY26) (2026AGDFY)	A	10/16/2025	7/15/2026
OELPA Assessment Collection (FY26) (2026AGFSP)	A	1/22/2026	8/5/2026
Spring Alternate Assessment Collection (FY26) (2026AALTS)	A	2/5/2026	8/5/2026
Career Tech Accountability Assessment Collection (FY26) (2026ACTSP)	A	2/5/2026	8/5/2026
Other Accountability Assessments (FY26) (2026ANACC)	A	2/5/2026	8/7/2026
Spring End of Course State Assessment Collection (FY26) (2026AGESP)	A	2/19/2026	7/15/2026
Spring State Assessment Grades 3-8 Collection (FY26) (2026AGNSP)	A	2/19/2026	7/15/2026
Tier 1 Dyslexia Screener Collection (FY26) (2026ADSFY)	A	10/2/2025	8/5/2026
Reading Diagnostics Collection (FY26) (2026ARDFY)	A	10/2/2025	8/5/2026

- [Assessment Missing Reports, Level 1](#)



# ***TRADITIONAL VALIDATING DATA WITH SECURE DATA CENTER (SDC) REPORTS***

## **Local Report Card Tile**

Report Portal > Secure Data Center > Local Report Card > District (or School) Local Report Card > **Achievement**

## **Traditional Performance Index**

Report Portal > Secure Data Center > Test Results > **District (or School) Test Results and Proficiency Levels**



# ***CTPD VALIDATING DATA WITH SECURE DATA CENTER (SDC) REPORTS***

## **Local Report Card Tile**

Report Portal > Secure Data Center > Local Report Card > CTPD  
Local Report Card > **Achievement**

## **Current Year Concentrator**

Report Portal > Secure Data Center > Career and Technical  
Education > **CTPR (or Member District) Current Year  
Concentrators**



# ***CONT. CTPD VALIDATING DATA WITH SECURE DATA CENTER (SDC) REPORTS***

## **Technical Skill Attainment**

Report Portal > Secure Data Center > Career and Technical Education > CTPD (or Member District) Technical Skill Attainment

## **CTPD Performance Index**

Report Portal > Secure Data Center > Career and Technical Education > **CTPD (or Member District) Proficiency Level Test Results**



# QUESTIONS TO AIDE IN VALIDATING DATA RELATED TO ACHIEVEMENT COMPONENT

This is not meant to be an all-inclusive list just a starting point

- Who are the students counting in this measure? Is this accurate?
- Are there students at each grade level and subject level that is in my building or school?
- Does the school or district have all proficiency levels as expected? Are my accelerated students being accounted for with the “bump” in proficiency level in the State Proficiency Level column?
- Who are the untested students and is this the correct reason the student was not assessed? Were they required to take an assessment?
- Are the AP/IB assessments showing in the testing record for those who take that assessment? If not, is there an EOC record that has a higher proficiency level?



# DISTRICT TEST RESULTS OVERVIEW



## District Test Results - Overview

Choose a School Year

All

Choose a District

Grade Level	School Year Subject	2019-2020 School Year			2020-2021 School Year			2021-2022 School Year			2022-2023 School Year			2023-2024 School Year		
		At Least Proficient	Tested Count	%	At Least Proficient	Tested Count	%	At Least Proficient	Tested Count	%	At Least Proficient	Tested Count	%	At Least Proficient	Tested Count	%
Third Grade	English Language Arts	36	79	45.6%	49	77	63.6%	55	64	85.9%	40	64	62.5%	46	59	78.0%
	Mathematics				56	76	73.7%	53	64	82.8%	37	64	57.8%	52	59	88.1%
Fourth Grade	English Language Arts				58	87	66.7%	52	79	65.8%	62	67	92.5%	44	61	72.1%
	Mathematics				69	88	78.4%	63	77	81.8%	58	67	86.6%	51	61	83.6%
Fifth Grade	English Language Arts				52	62	83.9%	65	91	71.4%	57	77	74.0%	59	68	86.8%
	Mathematics				40	61	65.6%	72	92	78.3%	58	76	76.3%	57	68	83.8%
	Science				45	61	73.8%	71	91	78.0%	53	76	69.7%	58	68	85.3%
Sixth Grade	English Language Arts				42	75	56.0%	35	66	53.0%	56	91	61.5%	40	82	48.8%
	Mathematics				43	75	57.3%	35	66	53.0%	51	92	55.4%	45	81	55.6%
Seventh Grade	English Language Arts				45	76	59.2%	43	73	58.9%	51	71	71.8%	71	94	75.5%
	Mathematics				51	76	67.1%	45	73	61.6%	45	72	62.5%	64	95	67.4%
Eighth Grade	English Language Arts				40	84	47.6%	44	78	56.4%	41	72	56.9%	31	68	45.6%
	Mathematics				34	56	60.7%	34	59	57.6%	25	54	46.3%	18	46	39.1%
	Science				50	84	59.5%	63	78	80.8%	57	72	79.2%	46	68	67.6%
High School	Algebra I	0	2	0.0%	62	82	75.6%	51	77	66.2%	73	83	88.0%	62	73	84.9%
	American US Government	27	30	90.0%	61	79	77.2%	62	73	84.9%	84	91	92.3%	63	75	84.0%
	American US History	1	2	50.0%	73	78	93.6%	78	89	87.6%	66	81	81.5%	67	77	87.0%
	Biology	1	1	100.0%	66	78	84.6%	78	88	88.6%	67	83	80.7%	59	73	80.8%
	English Language Arts I	0	1	0.0%												
	English Language Arts II	3	3	100.0%	57	84	67.9%	61	92	66.3%	55	86	64.0%	57	76	75.0%
	Geometry	0	3	0.0%	26	61	42.6%	43	86	50.0%	34	68	50.0%	47	90	52.2%
	Mathematics I	0	2	0.0%												
Mathematics II	0	2	0.0%													

Proficiency Level



# DISTRICT PROFICIENCY LEVELS OVERVIEW

**Test Results**  
Reports about Ohio's State Tests.



**District Test Results and Proficiency Levels**  
Test Result and Proficiency Level details by district by assessment by demographic.



**School Test Results and Proficiency Levels**  
Test Result and Proficiency Level details by school by assessment by demographic.

**Proficiency Level**

School Year		2024-2025 School Year														Total	
Grade Level	Proficiency Level Description Subject	Untested		Limited		Basic		Proficient		Accomplished		Advanced		Advanced Plus		Count	%
		Count	%	Count	%	Count	%	Count	%	Count	%	Count	%	Count	%		
Third Grade	English Language Arts	1,265	1.0%	42,919	34.5%	27,760	22.3%	19,336	15.5%	16,162	13.0%	16,960	13.6%	3	0.0%	124,405	100.0%
	Mathematics	4	4.4%	53	58.2%	8	8.8%	7	7.7%	10	11.0%	9	9.9%			91	100.0%
Fourth Grade	English Language Arts	5	5.8%	53	61.6%	6	7.0%	15	17.4%	3	3.5%	4	4.7%			86	100.0%
	Mathematics	5	5.7%	51	58.6%	18	20.7%	3	3.4%	5	5.7%	5	5.7%			87	100.0%
Fifth Grade	English Language Arts	7	9.2%	28	36.8%	21	27.6%	7	9.2%	6	7.9%	7	9.2%			76	100.0%
	Mathematics	8	10.5%	38	50.0%	10	13.2%	10	13.2%	4	5.3%	6	7.9%			76	100.0%
	Science	7	9.2%	32	42.1%	7	9.2%	12	15.8%	5	6.6%	13	17.1%			76	100.0%
	History	5	5.5%	50	54.9%	11	12.1%	10	11.0%	7	7.7%	8	8.8%			91	100.0%
	Physical Education	4	4.4%	62	68.9%	7	7.8%	7	7.8%	4	4.4%	6	6.7%			90	100.0%
	Art	5	8.2%	39	63.9%	5	8.2%	6	9.8%	4	6.6%	2	3.3%			61	100.0%
	Music	5	8.2%	38	62.3%	6	9.8%	7	11.5%			5	8.2%			61	100.0%
	Foreign Language	4	6.3%	39	60.9%	10	15.6%	2	3.1%	4	6.3%	5	7.8%			64	100.0%
	Health	4	6.2%	47	72.3%	7	10.8%	2	3.1%	2	3.1%	3	4.6%			65	100.0%
	Other	4	6.7%	39	65.0%	5	8.3%	4	6.7%	4	6.7%	4	6.7%			60	100.0%
Sixth Grade	Mathematics	10	0.1%	4,772	47.7%	1,746	17.5%	1,730	17.3%	1,265	12.6%	477	4.8%	4	0.0%	10,004	100.0%
	Science	29	0.1%	3,304	10.8%	5,952	19.5%	13,718	44.9%	4,745	15.5%	2,821	9.2%			30,569	100.0%
Seventh Grade	Mathematics	12	0.2%	1,280	18.2%	2,326	33.2%	2,048	29.2%	626	8.9%	724	10.3%			7,016	100.0%
	Science	8	0.1%	2,536	35.2%	1,694	23.5%	1,823	25.3%	471	6.5%	676	9.4%			7,208	100.0%
Eighth Grade	Mathematics			1	100.0%											1	100.0%
	Science	14	0.2%	3,494	39.3%	1,908	21.5%	2,053	23.1%	816	9.2%	599	6.7%			8,884	100.0%
Ninth Grade	Mathematics	12	0.2%	4,969	67.1%	965	13.0%	711	9.6%	487	6.6%	259	3.5%	6	0.1%	7,409	100.0%
	Science			155	59.8%	47	18.1%	30	11.6%	22	8.5%	5	1.9%			259	100.0%
Tenth Grade	Mathematics			168	80.0%	14	6.7%	13	6.2%	11	5.2%	4	1.9%			210	100.0%
	Science																
<b>Total</b>		<b>1,417</b>	<b>0.7%</b>	<b>64,167</b>	<b>32.6%</b>	<b>42,533</b>	<b>21.6%</b>	<b>41,554</b>	<b>21.1%</b>	<b>24,663</b>	<b>12.5%</b>	<b>22,602</b>	<b>11.5%</b>	<b>13</b>	<b>0.0%</b>	<b>196,949</b>	<b>100.0%</b>

Are all Proficiency Levels being displayed?

Reminder: These totals will not match totals in CRS Reports. Accountability rules (WKC) are applied to this report

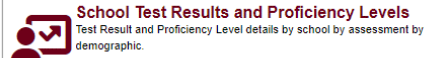
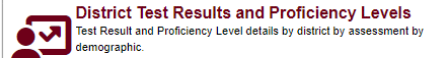


# DISTRICT TEST RESULTS SSID DETAIL



## District Test Results SSID Detail

Note: A count of '0' is not used or included in report card aggregations.



SSID

Grade Level	Subject Code	Subject Description	Proficiency Level	State Proficiency Level	Test Type Code	Score Not Reported Reason	Assessment Score	Count	Gender	Race/Ethnicity	ED Flag	SWD Flag	EL Code	Test taken Above Student Grade Level	Identified as Gifted
High School	GEOM	Geometry	Basic	Basic	STR	*	685	1	F	H	N	Y	N	Y	N
High School	GOVM	American US Government	Proficient	Accomplished	STR	*	716	1	M	W	N	Y	N	Y	N
Third Grade	ELA	English Language Arts	Proficient	Accomplished	STR	*	701	1	M	B	Y	N	N	Y	Y
High School	ALG1	Algebra I	Proficient	Accomplished	STR	*	719	1	F	W	Y	N	N	Y	Y
High School	ALG1	Algebra I	Proficient	Accomplished	STR	*	715	1	F	M	N	N	N	Y	N
Third Grade	ELA	English Language Arts	Accomplished	Advanced	STR	*	742	1	M	B	Y	N	N	Y	N
Third Grade	ELA	English Language Arts	Accomplished	Advanced	STR	*	742	1	F	P	N	N	N	Y	Y
High School	ELA2	English Language Arts II	Accomplished	Advanced	STR	*	726	1	M	W	N	Y	N	Y	N
High School	ALG1	Algebra I	Accomplished	Advanced	STR	*	736	1	M	W	Y	N	N	Y	N
High School	GEOM	Geometry	Accomplished	Advanced	STR	*	729	1	M	B	N	N	N	Y	N
High School	GEOM	Geometry	Advanced	Advanced Plus	STR	*	794	1	F	A	N	N	N	Y	N
High School	GEOM	Geometry	Advanced	Advanced Plus	STR	*	756	1	M	A	N	N	N	Y	N
High School	GEOM	Geometry	Advanced	Advanced Plus	STR	*	759	1	M	A	N	N	N	Y	Y
High School	ALG1	Algebra I	Advanced	Advanced Plus	STR	*	792	1	M	W	N	N	N	Y	Y
High School	ELA	English Language Arts	Advanced	Advanced Plus	STR	*	780	1	F	M	Y	N	N	Y	Y
High School	ALG1	Algebra I	Advanced	Advanced Plus	STR	*	773	1	M	W	N	N	N	Y	N
High School	GEOM	Geometry	Advanced	Advanced Plus	STR	*	756	1	M	B	N	N	N	Y	N
Third Grade	ELA	English Language Arts	Advanced	Advanced Plus	STR	*	763	1	F	W	N	N	N	Y	Y
High School	GEOM	Geometry	Advanced	Advanced Plus	STR	*	765	1	F	W	N	N	N	Y	N
								196,949							

Example of Accelerated  
"bump" in Proficiency  
Level



# DISTRICT TEST RESULTS SSID DETAIL, CONT.

**Test Results**  
Reports about Ohio's State Tests.



**District Test Results and Proficiency Levels**  
Test Result and Proficiency Level details by district by assessment by demographic.



**School Test Results and Proficiency Levels**  
Test Result and Proficiency Level details by school by assessment by demographic.

**SSID**

Note: A count of '0' is not used or included in report card aggregations.

Choose a School Year

2024-2025 School Year

Choose an Assessment Grade

All

Choose a Subject

All

Choose an Assessment Type

All

Choose an SSID

All

More options

Test Taken Above Student Grade Level	Identified as Gifted	Receiving Gifted Services	Identified as Gifted in Math	Receiving Gifted Services in Math	Identified as Gifted in Reading	Receiving Gifted Services in Reading	Identified as Gifted in Science	Receiving Gifted Services in Science	Identified as Gifted in Social Studies	Receiving Gifted in Social Studies
Y	N	N	N	N	N	N	N	N	N	N
Y	N	N	N	N	N	N	N	N	N	N
Y	Y	N	Y	N	Y	N	N	N	N	N
Y	Y	Y	N	N	N	N	N	N	N	N
Y	N	N	N	N	N	N	N	N	N	N
Y	N	N	N	N	N	N	N	N	N	N
Y	Y	N	Y	N	N	N	N	N	N	N
Y	N	N	N	N	N	N	N	N	N	N
Y	N	N	N	N	N	N	N	N	N	N
Y	N	N	N	N	N	N	N	N	N	N
Y	N	N	N	N	N	N	N	N	N	N
Y	N	N	N	N	N	N	N	N	N	N
Y	N	N	N	N	N	N	N	N	N	N
Y	N	N	N	N	N	N	N	N	N	N
Y	Y	Y	Y	Y	Y	Y	N	N	Y	Y
Y	Y	Y	Y	Y	N	N	N	N	N	N
Y	Y	N	Y	N	Y	N	N	N	N	N
Y	N	N	N	N	N	N	N	N	N	N
Y	N	N	N	N	N	N	N	N	N	N
Y	Y	N	Y	N	Y	N	N	N	N	N
Y	N	N	N	N	N	N	N	N	N	N

**New Columns to Aid with Acceleration and Gifted Validations!**



# ***QUESTIONS TO AIDE IN VALIDATING DATA RELATED TO CURRENT YEAR CONCENTRATORS***

This is not meant to be an all-inclusive list just a starting point

- Is the list of Current Year Concentrators accurate?
- Have I verified the CTAC-102 Level 2 report?
- Have I verified the CTAC-103 Level 2 report?

# CURRENT YEAR CONCENTRATORS DISAGGREGATE DETAIL



## Current Year Concentrators (Member District) - Demographic Overview

Choose a School Year

2023-2024 School Year

Choose a District

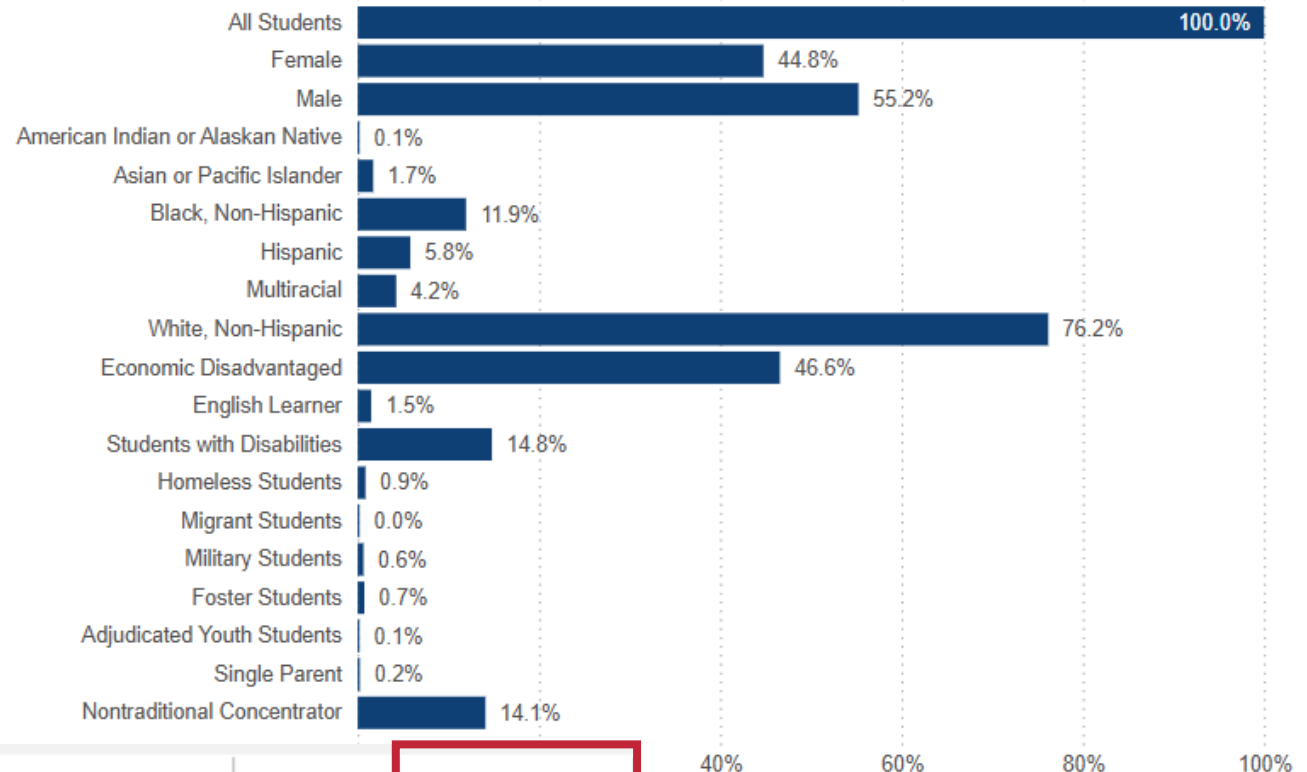
All

Choose a Pathway

All

Student Group	Count	% of Total
All Students	91,015	100.0%
Female	40,809	44.8%
Male	50,206	55.2%
American Indian or Alaskan Native	111	0.1%
Asian or Pacific Islander	1,559	1.7%
Black, Non-Hispanic	10,916	12.0%
Hispanic	5,295	5.8%
Multiracial	3,875	4.3%
White, Non-Hispanic	69,268	76.1%
Economic Disadvantaged	42,514	46.7%
English Learner	1,354	1.5%
Students with Disabilities	13,474	14.8%
Homeless Students	780	0.9%
Migrant Students	12	0.0%
Military Students	579	0.6%
Foster Students	664	0.7%
Adjudicated Youth Students	128	0.1%
Single Parent	208	0.2%
Nontraditional Concentrator	12,861	14.1%

Current Year Concentrators by Student Group



Demographic Overview

District Disaggregate

CTE Pathway Detail

Trend

SSID Detail

40% 60% 80% 100%



# CURRENT YEAR CONCENTRATORS CTE PATHWAY DETAIL

**Career and Technical Education**  
Reports about Career Tech Education data.



**Member District Current Year Concentrators**  
Current Year Concentrators at member district level.



**CTE Pathway Detail**

Ohio Department of Education & Workforce		Current Year Concentrators (Member District) - Disaggregate Detail					
Choose a District All		Choose a Student Group All Students		Choose a Pathway All			
District	Pathway	Student Group	2020-2021 School Year	2021-2022 School Year	2022-2023 School Year	2023-2024 School Year	2024-2025 School Year
	C4: Business and Administrative Services	All Students			9		
	JM: Allied Health and Nursing	All Students	1				
	A0: Agribusiness and Production Systems	All Students	1	26	39	48	52
	A0: Agribusiness and Production Systems	All Students	83	62	133	98	109
	A1: Agricultural and Industrial Power Technology	All Students	35	35	36	40	42
	DD: Structural Systems	All Students	18	29	20	26	33
	E0: Early Childhood Education	All Students	23	23	24	28	
	E1: Teaching Professions	All Students					27
	JM: Allied Health and Nursing	All Students	24	30	27	42	27
	L0: Culinary and Food Service Operations	All Students	13	23	24	18	18
	M1: Cosmetology	All Students	12	23	28	22	29
	N3: Programming and Software Development	All Students	23	27	31	34	35
	R7: Manufacturing Operations	All Students	71	70	68	67	28
	R8: Metallurgy	All Students					40
	T9: Ground Transportation	All Students	28	26	25	34	36
	A6: Natural Resource Management	All Students					2
	B0: Media Arts	All Students					11
	L0: Culinary and Food Service Operations	All Students			9	18	9
	A2: Animal Science and Management	All Students	46	52	46	51	46
	A6: Natural Resource Management	All Students		16	12	29	15
	B0: Media Arts	All Students		2			
	B1: Performing Arts	All Students	168	156	130	103	122
	B2: Visual Design and Imaging	All Students	18	30	38	46	35
	C4: Business and Administrative Services	All Students	141	119	63	39	31
	DD: Structural Systems	All Students	117	64	75	108	88
	DE: Mechanical Electrical and Plumbing Systems	All Students	31	37	41	33	15
	E0: Early Childhood Education	All Students	39	39	36	28	12
	E1: Teaching Professions	All Students	20		3	13	8

# CURRENT YEAR CONCENTRATORS SSID DETAIL

**Career and Technical Education**  
Reports about Career Tech Education data.

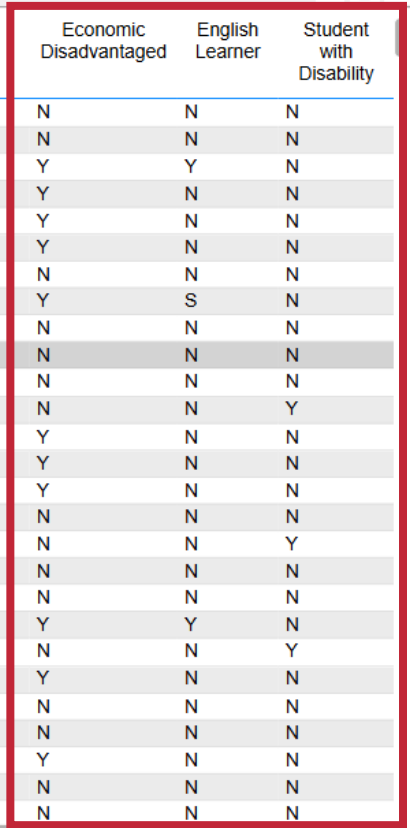


**Member District Current Year Concentrators**  
Current Year Concentrators at member district level.



**SSID Detail**

Ohio Department of Education & Workforce		Current Year Concentrators (Member District) - SSID Detail								
Choose a School Year	Choose a District	Choose a Pathway	Choose an SSID							
2024-2025 School Year	All	All	All	District	Pathway	Gender	Race/Ethnicity	Economic Disadvantaged	English Learner	Student with Disability
					J6: Exercise Science/Sports and Recreation Healthcare	Male	White, Non-Hispanic	N	N	N
					A0: Agribusiness and Production Systems	Male	White, Non-Hispanic	N	N	N
					C4: Business and Administrative Services	Female	Asian	Y	Y	N
					F6: Engineering and Design	Male	White, Non-Hispanic	Y	N	N
					A0: Agribusiness and Production Systems	Female	White, Non-Hispanic	Y	N	N
					M1: Cosmetology	Female	Black, Non-Hispanic	Y	N	N
					F6: Engineering and Design	Female	White, Non-Hispanic	N	N	N
					F6: Engineering and Design	Female	Black, Non-Hispanic	Y	S	N
					JM: Allied Health and Nursing	Male	White, Non-Hispanic	N	N	N
					B0: Media Arts	Female	White, Non-Hispanic	N	N	N
					F6: Engineering and Design	Male	White, Non-Hispanic	N	N	N
					P6: Firefighting and Emergency Medical Services	Female	White, Non-Hispanic	N	N	Y
					F6: Engineering and Design	Male	White, Non-Hispanic	Y	N	N
					A0: Agribusiness and Production Systems	Male	White, Non-Hispanic	Y	N	N
					F6: Engineering and Design	Male	Black, Non-Hispanic	Y	N	N
					A0: Agribusiness and Production Systems	Female	White, Non-Hispanic	N	N	N
					A0: Agribusiness and Production Systems	Female	White, Non-Hispanic	N	N	Y
					R7: Manufacturing Operations	Male	White, Non-Hispanic	N	N	N
					C5: Logistics and Supply Chain Management	Male	White, Non-Hispanic	N	N	N
					M1: Cosmetology	Female	Hispanic	Y	Y	N
					JM: Allied Health and Nursing	Male	White, Non-Hispanic	N	N	Y
					JM: Allied Health and Nursing	Female	White, Non-Hispanic	Y	N	N
					J0: Biotechnology	Female	White, Non-Hispanic	N	N	N
					A0: Agribusiness and Production Systems	Female	White, Non-Hispanic	N	N	N
					C4: Business and Administrative Services	Male	White, Non-Hispanic	Y	N	N
					A0: Agribusiness and Production Systems	Female	White, Non-Hispanic	N	N	N
					R7: Manufacturing Operations	Male	White, Non-Hispanic	N	N	N



# QUESTIONS TO AIDE IN VALIDATING DATA RELATED TO TECHNICAL SKILL ATTAINMENT MEASURE

This is not meant to be an all-inclusive list just a starting point

- Who are the students counting in this measure? Have the Current Year Concentrators been validated?
- Who are the untested students?
- Who are the students who haven't met Proficient or Higher?
- Who are the students indicating an "I" for Proficiency Level? Are there any assessments missing that this student has taken but hasn't been reported?
- Do any pathways have lower than expected rates?

# TECHNICAL SKILL ATTAINMENT PARTICIPATION RATE



## Technical Skill Attainment Participation Rate (CTPD) - Demographic Overview

Choose a School Year

2023-2024 School Year

Choose a Career Tech Planning District

All

Choose a Pathway

All

Student Group	Tested Count	Concentrator Count	Participation Rate
All Students	88,613	90,295	98.1%
Female	39,855	40,564	98.3%
Male	48,758	49,731	98.0%
American Indian or Alaskan Native	109	110	99.1%
Asian or Pacific Islander	1,527	1,550	98.5%
Black, Non-Hispanic	10,306	10,797	95.5%
Hispanic	5,122	5,251	97.5%
Multiracial	3,749	3,839	97.7%
White, Non-Hispanic	67,806	68,755	98.6%
Economic Disadvantaged	40,912	42,084	97.2%
English Learner	1,201	1,255	95.7%
Students with Disabilities	12,413	12,756	97.3%
Homeless Students	727	775	93.8%
Migrant Students	12	12	100.0%
Military Students	573	577	99.3%
Foster Students	631	650	97.1%
Adjudicated Youth Students	119	125	95.2%
Single Parent	198	208	95.2%
Nontraditional Concentrator	12,666	12,857	98.5%
<b>Total</b>	<b>88,613</b>	<b>90,295</b>	<b>98.1%</b>

### Technical Skill Participation Rate by Subgroup



Demographic Overview - Participation

CTPD Disaggregate - Participation

Trend - Participation

District Disaggregate - Participation

Pathway Detail - Participation



# PATHWAY DETAIL- PARTICIPATION



## Technical Skill Attainment Participation Rate (Member District) - Disaggregate Detail

Choose a School Year

2024-2025 School Year

Choose a District

All

Choose a Pathway

All



**Career and Technical Education**  
Reports about Career Tech Education data.



**CTPD Technical Skill Attainment**  
Technical Skill Attainment at CTPD level.



**Member District Technical Skill Attainment**  
Technical Skill Attainment at member district level.



**Pathway Detail - Participation**

Member District	School Year Pathway	2024-2025 School Year		
		Tested Count	Concentrator Count	Participation Rate
	A0: Agribusiness and Production Systems	52	52	100.0%
	A0: Agribusiness and Production Systems	103	109	94.5%
	A1: Agricultural and Industrial Power Technology	37	42	88.1%
	DD: Structural Systems	17	33	51.5%
	E1: Teaching Professions	13	27	48.1%
	JM: Allied Health and Nursing	19	27	70.4%
	L0: Culinary and Food Service Operations	9	18	50.0%
	M1: Cosmetology	10	29	34.5%
	N3: Programming and Software Development	15	35	42.9%
	R7: Manufacturing Operations	12	28	42.9%
	R8: Metallurgy	19	40	47.5%
	T9: Ground Transportation	19	36	52.8%
	A6: Natural Resource Management	2	2	100.0%
	B0: Media Arts	1	11	9.1%
	L0: Culinary and Food Service Operations	3	9	33.3%
	A2: Animal Science and Management	45	46	97.8%
	A6: Natural Resource Management	15	15	100.0%
	B1: Performing Arts	111	122	91.0%
	B2: Visual Design and Imaging	34	35	97.1%
	C4: Business and Administrative Services	29	31	93.5%
	DD: Structural Systems	82	88	93.2%
	DE: Mechanical Electrical and Plumbing Systems	15	15	100.0%
	E0: Early Childhood Education	12	12	100.0%
	E1: Teaching Professions	8	8	100.0%
	F6: Engineering and Design	188	199	94.5%
	J0: Biotechnology	74	74	100.0%
	J6: Exercise Science/Sports and Recreation Healthcare	35	36	97.2%
	JM: Allied Health and Nursing	97	98	99.0%
	L0: Culinary and Food Service Operations	98	99	99.0%
	L1: Lodging	33	33	100.0%
	M1: Cosmetology	24	25	96.0%
	N0: Information Support and Services	55	56	98.2%



# TECHNICAL SKILL ATTAINMENT PASSAGE

**Career and Technical Education**  
Reports about Career Tech Education data.



**CTPD Technical Skill Attainment**  
Technical Skill Attainment at CTPD level.

**Member District Technical Skill Attainment**  
Technical Skill Attainment at member district level.



**Demographic Overview - Passage**



## Technical Skill Attainment Assessment Passage (CTPD) - Demographic Overview

Choose a School Year

2023-2024 School Year

Choose a Career Tech Planning District

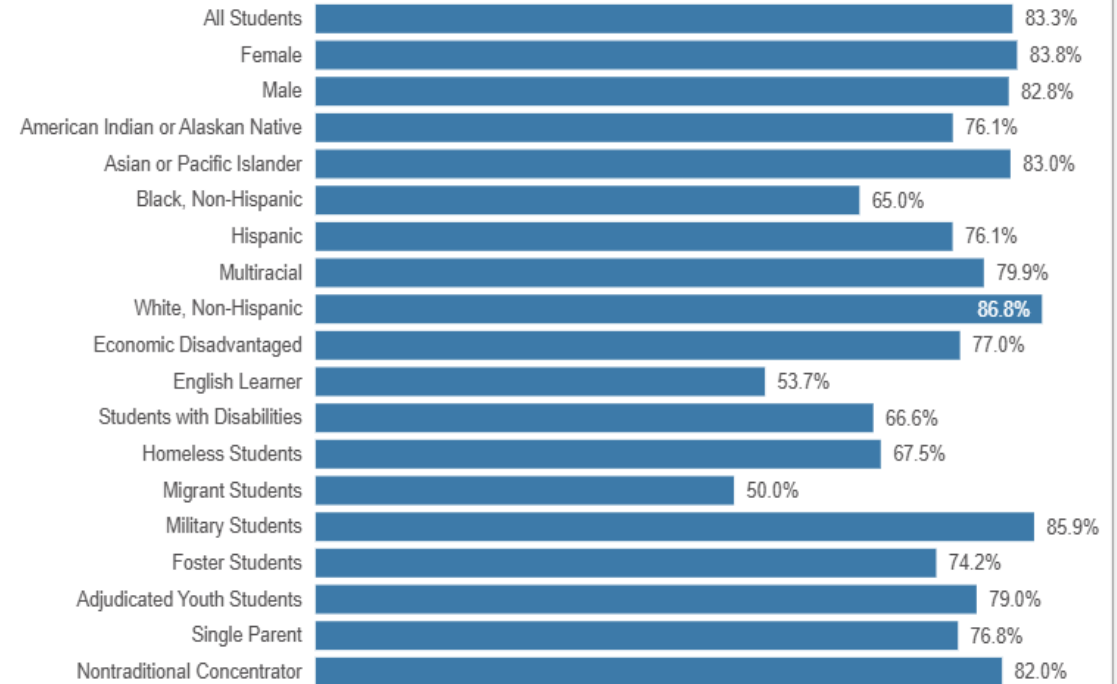
All

Choose a Pathway

All

Student Group	Proficient or Higher	Tested Count	Passage Rate
All Students	73,798	88,613	83.28%
Female	33,411	39,855	83.83%
Male	40,387	48,758	82.83%
American Indian or Alaskan Native	83	109	76.15%
Asian or Pacific Islander	1,268	1,527	83.04%
Black, Non-Hispanic	6,698	10,306	64.99%
Hispanic	3,899	5,122	76.12%
Multiracial	2,994	3,749	79.86%
White, Non-Hispanic	58,860	67,806	86.81%
Economic Disadvantaged	31,506	40,912	77.01%
English Learner	645	1,201	53.71%
Students with Disabilities	8,273	12,413	66.65%
Homeless Students	491	727	67.54%
Migrant Students	6	12	50.00%
Military Students	492	573	85.86%
Foster Students	468	631	74.17%
Adjudicated Youth Students	94	119	78.99%
Single Parent	152	198	76.77%
Nontraditional Concentrator	10,391	12,666	82.04%

Technical Skill Assessment Passage Rate by Student Group



# PATHWAY DETAIL- PASSAGE

**Career and Technical Education**  
Reports about Career Tech Education data.



**CTPD Technical Skill Attainment**  
Technical Skill Attainment at CTPD level.

**Member District Technical Skill Attainment**  
Technical Skill Attainment at member district level.



**Pathway Detail - Passage**

Ohio Department of Education & Workforce		Technical Skill Attainment Passage Rate (Member District) - Disaggregate Detail		
Choose a School Year	Choose a Subgroup	Choose a Pathway		
2024-2025 School Year	All	All		
Member District	School Year Pathway	2024-2025 School Year		
		Proficient or Higher	Tested Count	Passage Rate
	A0: Agribusiness and Production Systems	25	52	48.08%
	A0: Agribusiness and Production Systems	42	103	40.78%
	A1: Agricultural and Industrial Power Technology	16	37	43.24%
	DD: Structural Systems	16	17	94.12%
	E1: Teaching Professions	8	13	61.54%
	JM: Allied Health and Nursing	8	19	42.11%
	L0: Culinary and Food Service Operations	9	9	100.00%
	M1: Cosmetology	9	10	90.00%
	N3: Programming and Software Development	12	15	80.00%
	R7: Manufacturing Operations	12	12	100.00%
	R8: Metallurgy	5	19	26.32%
	T9: Ground Transportation	17	19	89.47%
	A6: Natural Resource Management		2	0.00%
	B0: Media Arts		1	0.00%
	L0: Culinary and Food Service Operations		3	0.00%
	A2: Animal Science and Management	22	45	48.89%
	A6: Natural Resource Management		15	0.00%
	B1: Performing Arts	40	111	36.04%
	B2: Visual Design and Imaging	10	34	29.41%
	C4: Business and Administrative Services	1	29	3.45%
	DD: Structural Systems	35	82	42.68%
	DE: Mechanical Electrical and Plumbing Systems	9	15	60.00%
	E0: Early Childhood Education		12	0.00%
	E1: Teaching Professions	5	8	62.50%
	F6: Engineering and Design	66	188	35.11%
	J0: Biotechnology	5	74	6.76%
	J6: Exercise Science/Sports and Recreation Healthcare	11	35	31.43%
	JM: Allied Health and Nursing	30	97	30.93%
	L0: Culinary and Food Service Operations	10	20	50.00%



# TECHNICAL SKILL ATTAINMENT SSID DETAIL

**Career and Technical Education**  
Reports about Career Tech Education data.



**CTPD Technical Skill Attainment**  
Technical Skill Attainment at CTPD level.

**Member District Technical Skill Attainment**  
Technical Skill Attainment at member district level.



**SSID Detail - Technical Skill Attainment**

Department of Education & Workforce		Technical Skill Attainment (CTPD) - SSID Detail										
Choose a School Year	Choose a Career Tech Planning District	Choose a Pathway	Choose an SSID									
2023-2024 School Year	All	All	All									
Pathway	Current Year Concentrator	Tested Count	Proficient or Higher	Proficiency Level	Gender	Race/Ethnicity	Economic Disadvantage	English Learner	Student with Disability	Homeless Status	Migrant Status	Military Status
JM: Allied Health and Nursing	1				F	H	Y	Y	N	N	N	*
F6: Engineering and Design	1		1		F	M	Y	N	N	N	N	*
B2: Visual Design and Imaging	1		1		F	W	N	N	N	N	N	*
F6: Engineering and Design	1		1		M	W	N	N	N	N	N	*
A0: Agribusiness and Production Systems	1		1		M	W	N	N	N	N	N	*
M1: Cosmetology	1		1		F	B	Y	N	N	N	N	*
DD: Structural Systems	1		1		M	W	N	N	N	N	N	*
F6: Engineering and Design	1		1		M	B	Y	N	N	N	N	*
DE: Mechanical Electrical and Plumbing Systems	1		1		M	A	Y	N	N	N	N	*
A0: Agribusiness and Production Systems	1		1		F	W	N	N	N	N	N	*
L0: Culinary and Food Service Operations	1		1		F	W	N	N	N	N	N	*
A0: Agribusiness and Production Systems	1		1		M	W	N	N	N	N	N	*
B0: Media Arts	1		1		F	W	Y	N	N	N	N	*
S5: Marketing	1		1		M	W	Y	N	N	N	N	*
A0: Agribusiness and Production Systems	1		1		M	W	N	N	N	N	N	*
T9: Ground Transportation	1		1		M	W	Y	N	N	N	N	*
F6: Engineering and Design	1		1		M	W	N	N	N	N	N	*
JM: Allied Health and Nursing	1		1		F	B	Y	N	N	N	N	*
DD: Structural Systems	1		1		M	B	Y	N	Y	N	N	*
F6: Engineering and Design	1		1		M	H	N	N	N	N	N	*
JM: Allied Health and Nursing	1		1		F	B	Y	N	N	N	N	*
C4: Business and Administrative Services	1		1		M	M	N	N	N	N	N	*
DD: Structural Systems	1		1		M	W	N	N	Y	N	N	*
R7: Manufacturing Operations	1		1		M	W	N	N	N	N	N	*
A0: Agribusiness and Production Systems	1		1		M	W	N	N	N	N	N	*
F6: Engineering and Design	1		1		M	W	N	N	N	N	N	*
J0: Biotechnology	1		1		F	W	N	N	N	N	N	*
	90,295	88,613	73,798									



# ***QUESTIONS TO AIDE IN VALIDATING DATA RELATED TO PERFORMANCE INDEX MEASURE***

This is not meant to be an all-inclusive list just a starting point

- Who are the students counting in this measure? Is this accurate?
- Do I have accelerated students?
- Who are the untested students?

# CTPD PROFICIENCY LEVEL OVERVIEW

## CTPD Proficiency Levels - Overview

District Name

Choose a School Year: 2023-2024 School Year

Choose a Career Technical Planning District: All

Choose a Pathway: All

Grade Level	Subject	Untested	Limited	Basic	Proficient	Accomplished	Advanced	Advanced Plus	Total
7th Grade	English Language Arts				2				2
	Mathematics			2					2
	<b>Total</b>			2	2				4
8th Grade	English Language Arts	2	38	52	82	31	14		219
	Mathematics	1	54	36	65	15	4		175
	Science	1	19	43	44	86	26		219
	<b>Total</b>	4	111	131	191	132	44		613
High School	Algebra I	78	19,907	20,405	21,651	12,079	4,486	1,320	79,926
	American US Government	503	5,011	14,299	32,737	10,719	6,792	36	70,097
	American US History	319	7,260	15,894	30,854	14,578	16,661	138	85,704
	Biology	272	13,068	15,702	29,415	10,416	17,738	915	87,526
	English Language Arts II	189	12,241	19,912	32,729	14,391	8,134	195	87,791
	Geometry	481	31,763	18,463	16,008	10,233	4,786	1,320	83,054
	Mathematics I	52	760	465	437	235	117	44	2,110
	Mathematics II	161	984	439	342	277	122	91	2,416
	<b>Total</b>	2,055	90,994	105,579	164,173	72,928	58,836	4,059	498,624
<b>Total</b>	2,059	91,105	105,712	164,366	73,060	58,880	4,059	499,241	

Are all Proficiency Levels being displayed?

Reminder: These totals will not match totals in CRS Reports. Accountability rules (Current Year Concentrators) are applied to this report

Career Centers or JVs with multiple buildings will not show by building IRN



# PROFICIENCY LEVEL – PATHWAY DETAIL

**Career and Technical Education**  
Reports about Career Tech Education data.



**CTPD Proficiency Level Test Results**  
Proficiency Level details by CTPD by assessment by demographic.

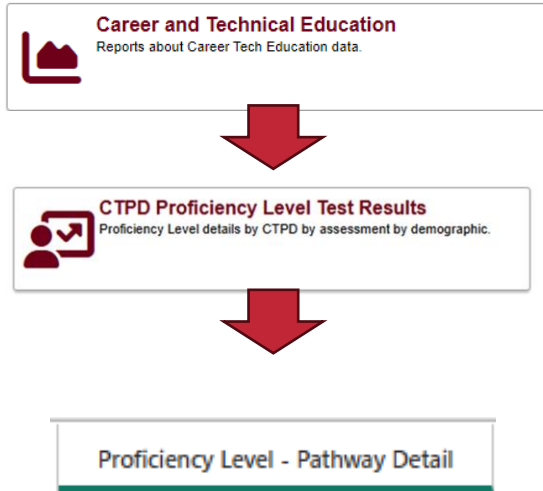


SSID Detail

Ohio Department of Education & Workforce		CTPD Proficiency Levels - Pathway Detail							
Choose a School Year		Choose a Career Technical Planning District			Choose a Pathway				
2024-2025 School Year		All			All				
District	Grade Level	Pathway	Untested	Limited	Basic	Proficient	Accomplished	Advanced	Advanced Plus
	High School	A0: Agribusiness and Production Systems		5	36	71	65	31	1
	High School	A0: Agribusiness and Production Systems		45	79	116	95	84	12
		A1: Agricultural and Industrial Power Technology		66	55	82	17	6	
		DD: Structural Systems	2	81	60	49	4	3	
		E1: Teaching Professions		58	50	40	11	1	
		JM: Allied Health and Nursing		41	37	65	11	4	
		L0: Culinary and Food Service Operations		26	20	33	16	11	
		M1: Cosmetology		30	52	54	23	10	1
		N3: Programming and Software Development		33	29	74	34	34	1
		R7: Manufacturing Operations		36	37	50	26	14	2
		R8: Metallurgy		106	61	42	17	9	
		T9: Ground Transportation		96	50	38	13	15	
	High School	A6: Natural Resource Management		3	3	2			
	High School	B0: Media Arts		20	4	7	1	1	
		L0: Culinary and Food Service Operations		22	12	10			
	High School	A2: Animal Science and Management		69	57	64	23	24	
		A6: Natural Resource Management		33	24	19	5		
		B1: Performing Arts		200	156	177	64	54	
		B2: Visual Design and Imaging	1	42	32	61	30	20	
		C4: Business and Administrative Services		96	37	28	4		
		DD: Structural Systems	7	231	117	87	17	15	
		DE: Mechanical Electrical and Plumbing Systems		48	32	10			
		E0: Early Childhood Education	1	28	12	12	4	4	
		E1: Teaching Professions		12	13	18	1		
		F6: Engineering and Design	3	304	248	265	138	102	1
		J0: Biotechnology		111	92	115	40	29	1
		J6: Exercise Science/Sports and Recreation Healthcare		103	49	30	6	4	
		JM: Allied Health and Nursing	1	221	155	124	16	8	



# CTPD PROFICIENCY LEVELS - SSID DETAIL



### CTPD Proficiency Levels - SSID Detail

Choose a School Year: 2023-2024 School Year

Choose a Career Technical Planning District: All

Choose a Pathway: All

Choose an SSID: All

SSID	Pathway	Grade Level	Subject	Proficiency Level	Count
	M1: Cosmetology	High School	Biology	Untested	1
	T9: Ground Transportation	High School	Mathematics I	Untested	1
	JM: Allied Health and Nursing	High School	Geometry	Untested	1
	B0: Media Arts	High School	English Language Arts II	Untested	1
	JM: Allied Health and Nursing	High School	American US Government	Untested	1
	DD: Structural Systems	High School	American US Government	Untested	1
	DD: Structural Systems	High School	American US History	Untested	1
	DD: Structural Systems	High School	Biology	Untested	1
	J6: Exercise Science/Sports and Recreation Healthcare	High School	Biology	Untested	1
	C5: Logistics and Supply Chain Management	High School	American US History	Untested	1
	C5: Logistics and Supply Chain Management	High School	Geometry	Untested	1
	A6: Natural Resource Management	High School	American US History	Untested	1
	A6: Natural Resource Management	High School	Biology	Untested	1
	A6: Natural Resource Management	High School	English Language Arts II	Untested	1
	A6: Natural Resource Management	High School	Geometry	Untested	1
	A2: Animal Science and Management	High School	American US Government	Untested	1
	C4: Business and Administrative Services	High School	American US Government	Untested	1
	F6: Engineering and Design	High School	Geometry	Untested	1
	B2: Visual Design and Imaging	High School	Biology	Untested	1
	B2: Visual Design and Imaging	High School	English Language Arts II	Untested	1
	R7: Manufacturing Operations	High School	American US History	Untested	1
	R7: Manufacturing Operations	High School	Geometry	Untested	1
	C4: Business and Administrative Services	High School	Geometry	Untested	1
	A0: Agribusiness and Production Systems	High School	American US Government	Untested	1
	F6: Engineering and Design	High School	American US Government	Untested	1
	F6: Engineering and Design	High School	Biology	Untested	1
	F6: Engineering and Design	High School	English Language Arts II	Untested	1
	M1: Cosmetology	High School	Mathematics I	Untested	1
	M1: Cosmetology	High School	Mathematics II	Untested	1
<b>Total</b>					<b>499,241</b>

This could be different than the Proficiency Level within CRS as the "bump" for acceleration is applied but not displayed



# EXPORTING DATA IN THE SECURE DATA CENTER

## Export in Excel format

The screenshot shows a 'Which data do you want to export?' dialog box. On the left, a menu is open with 'Export data' highlighted. The dialog contains three options: 'Data with current layout' (selected), 'Summarized data', and 'Underlying data'. Below these is a 'File format' dropdown set to '.xlsx (Excel 150,000-row max)'. At the bottom are 'Export' and 'Cancel' buttons. A blue box highlights the 'Export data' menu item, and another blue box highlights the 'Data with current layout' option. A blue arrow points from the first box to the second, and another blue arrow points from the second box to the 'Export' button.

Export data

- Show as a table
- Spotlight
- Get insights
- Sort descending
- Sort ascending
- Sort by

### Which data do you want to export?

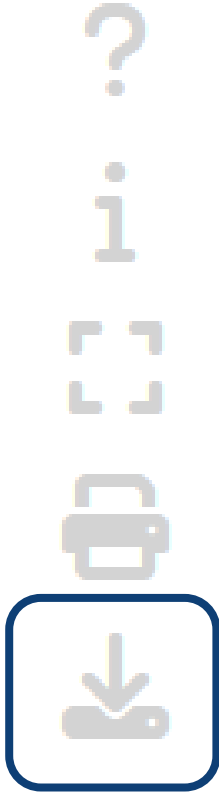
Export your data in the format that suits your needs. If you have a lot of data, the number of rows you export might be limited depending on the file type you select. [Learn more about exporting data](#)

- Data with current layout**  
Export this data in the same layout you see now, but without any icons, colors, or other formatting you added.
- Summarized data**  
Export the summarized data used to create your visual (for example, sums, averages, and medians).
- Underlying data**  
The report author turned off this option

File format:  
.xlsx (Excel 150,000-row max) v

Export Cancel

## Export in .CSV format



# QUESTIONS?

---

EDUCATION.OHIO.GOV



**Department of  
Education &  
Workforce**

# CONTACT

## **ACCOUNTABILITY GENERAL CONTACT**

[accountability@education.ohio.gov](mailto:accountability@education.ohio.gov)

## **ACCOUNTABILITY OFFICE HOURS**

The Office of Accountability is dedicated to help answer questions and provide trainings around Ohio's Report Cards for district staff members.



# ***FEEDBACK FORM***

At the end of today's meeting, please take a few moments to complete our [Feedback Survey](#) to support our continued improvement.

Feedback Form: Traditional &  
CTPD Achievement Component

