

Model for Implementing Adolescent Literacy

New Lexington Schools

Presenters: Karen Fehrman, Erin Schumaker, & Charity Smith

New Lexington Schools' Demographics

- Located in Perry County
- Made up of four schools:
 - New Lexington High School
 - New Lexington Middle School
 - New Lexington Elementary
 - Junction City Elementary
- Enrollment: 1,980 students
- 100% Free & Reduced Lunch
- Chronic Absenteeism: 27%
- Graduation Rate: 93%
- Students with Disabilities: 18.7%
- Students Identified as Gifted: 10%



Implementation

Years One - Four

- Hired full time literacy coaches at both the middle school and high school. (Previously, both buildings shared one literacy coach.)
 - Also hired an educational assistant to help with intervention coverage.
- Implemented benchmark testing using The Reading Inventory.
 - Test three times per year.
 - Use the data to determine intervention groups.
- Changed the middle school and high school schedules to allow for an intervention time.
 - Looks different in each building
- Professional development - Keys to Literacy

Years One - Four

- Intervention programs purchased and implemented.
- Student engagement - book vending machine; book vouchers for book fair
- Classroom teachers purchase class book sets to supplement the curriculum
- Family engagement opportunities
- Whole School Book reads

Reading Intervention NLHS and NLMS

Universal Screener for both buildings is Scholastic Reading Inventory.

NLHS

- Tier 1-HMH Into Literature
- Tier 2-Read 180
- Tier 3-System 44
- Targeted Tier 3-Rewards

NLMS

- Tier 1-Amplify ELA
- Tier 2-Language Live 2nd Level
- Tier 3-Language Live 1st Level
- Targeted Tier 3-Phonics for Reading

Professional Development

Professional Development

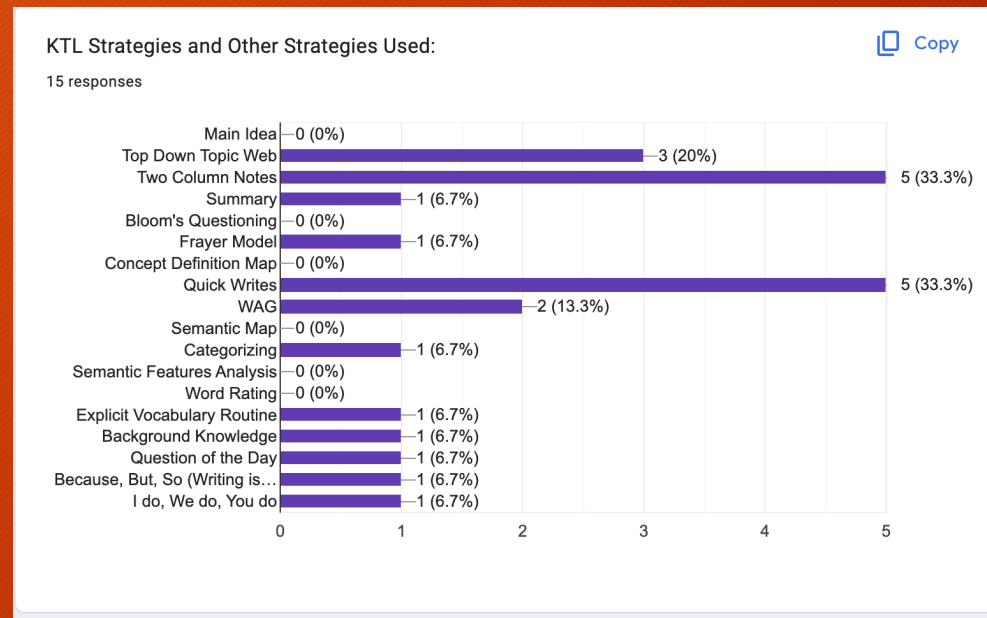
- Completed all three sections of Keys to Literacy
- Literacy coaches have worked on ways to sustain the Keys to Literacy teachings and also onboard new teachers into the routines.

Middle School Keys to Literacy Sustainability

Charity Smith, New Lexington Middle School Literacy Coach

Middle School Keys to Literacy Sustainability

- KTL Handbooks are given to new teachers as well as a Power Point slide presentation.
- I have created a digital walkthrough form in which data is collected for each class visit about each KTL strategy and best practice being implemented.



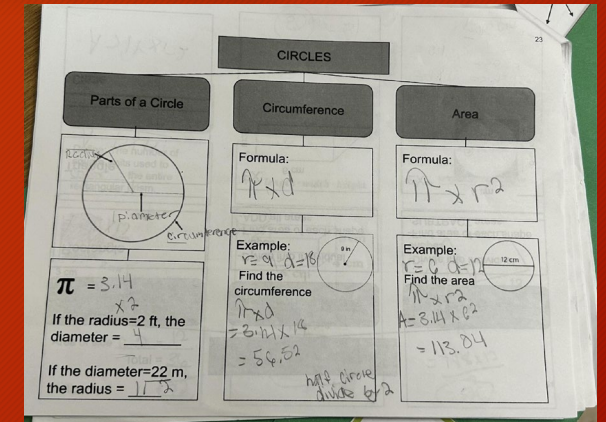
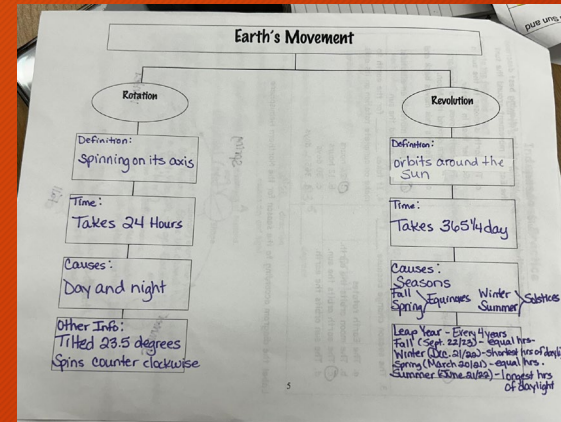
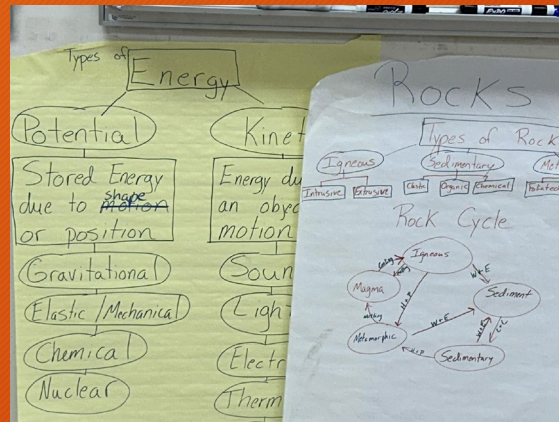
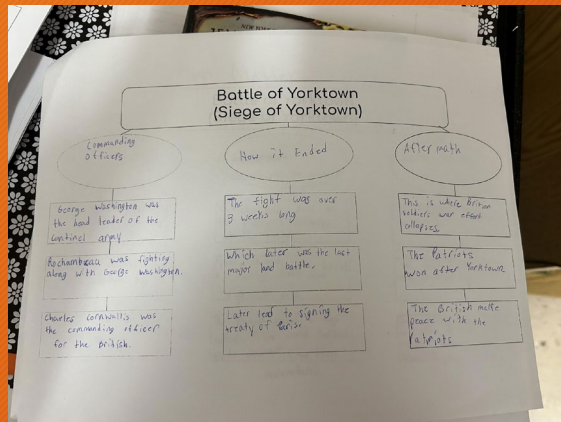
Middle School Keys to Literacy Sustainability

- Online walkthrough tool

KTL Strategies and Other Strategies Used: ☰

- Main Idea
- Top Down Topic Web
- Two Column Notes
- Summary
- Bloom's Questioning
- Frayer Model
- Concept Definition Map
- Quick Writes
- WAG
- Semantic Map
- Categorizing
- Semantic Features Analysis
- Word Rating
- Explicit Vocabulary Routine
- Question of the Day
- Background Knowledge
- Other...

KTL Used Across the Curriculum at NLMS: Top-Down Topic Webs



Top-Down Topic Webs used in 8th grade Social Studies, 6th grade Science, 7th grade Science, and 7th grade Math.

KTL Used Across the Curriculum at NLMS: Two Column-Notes

Ratio: A comparison of 2 quantities.

3 ways to write:
Using a colon (:)
Using the word to
as a fraction

*fraction can be improper

Special Notes:
order counts!
So, boy/girls - the boys number goes first
ratios can be simplified

3 ways to compare:
① part to part
② part to whole
③ whole to part

Equivalent Ratios: Ratios that are equal

Rate: A comparison of 2 different units

Unit Rate: A rate where the denominator becomes 1

Anecdote: Two-Column Notes Outline

Question	Details
When did this happen? How old were you?	When did this happen? - Winter 2021 (7th grade) How old were you - 10
Where were you when this happened?	I was at home on a snowy hill.
How were you feeling before the incident?	I was feeling smart. (That quickly faded)
Who else was there?	My brother.
In detail - what happened?	It was a snow day, so my brother and I decided to go sledding. We got the sled from our garage and took it to the hill. We took turns going down the hill on the sled. I was getting bored, so I had the marvellous idea to stand up on the sled and go down the hill. Keep in mind, there was a fence beside us. So I went down the hill and it was going just how I thought it would. Until the turning point. Literally. The sled somehow turned off course, making the sled slip out from under my feet. I then fell on my stomach and the side of my face scraped the fence. When I got up, my eye was bruised and the side of my face was scraped up.

Complementary Angle Relationships

Picture Examples: $65^\circ + 25^\circ = 90^\circ$, $40^\circ + 50^\circ = 90^\circ$, $60^\circ + 30^\circ = 90^\circ$

Definition: Two angles in which the sum of the measures equal 90°

Trick to Remember: A 90° angle is also known as a right angle

Find missing angle: Use an equation to solve for x

Check: $75 + x = 90$
 -75
 $x = 15^\circ$

Check: $2x + x = 90$
 $3x = 90$
 $x = 30^\circ$

Write in the missing angle measures.

HEY YALL

Further Research

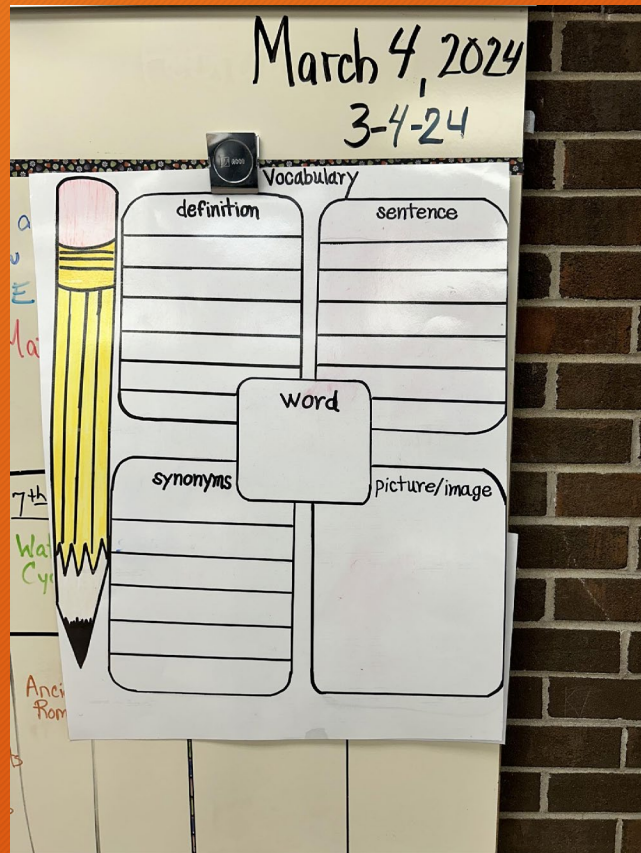
Research each article of the U.S. Constitution. Then match each term from the word bank with the article that addresses it, and briefly summarize the article.

Word Bank: judicial-branch, amendments, states, executive-branch, justification, legislative-branch, rights

Article I	Legislative branch • Bicameral Legislature (House / Senate) • U.S. House of Reps.
Article II	Executive branch • P.O.T.U.S./V.P./Cabinet
Article III	Judicial branch • U.S. Supreme Court • Chief Justice
Article IV	States
Article V	Amendment Process ↳ Change/adding on "Living document"
Article VI	Oaths of office "...to support this Constitution..."
Article VII	Ratification ↳ approval 9/13 → 13/13 → Bill of Rights

Used in 6th grade Math, 7th grade ELA, 7th grade Math, and 8th grade Social Studies.

KTL Used Across the Curriculum at NLMS: Frayer Model



Used in a Cross Curricular Self-Contained Classroom and 6th grade Math.

Name _____

<p>Definition</p> <p>comparing two quantities</p>	<p>Examples of Ratios</p> <p>• boys to girls</p> <p>• miles to minutes</p> <p>• apples to oranges</p>
<p>RATIOS</p>	
<p>• order counts</p> <p>• can be improper</p> <p>• 3 ways to write</p>	<p>Stars to saucers</p> <p>5 to 7</p> <p>Draw or sketch an example</p>
<p>Three important facts about ratios</p>	
<p>Describe 3 ratio examples found in the classroom. Give the ratio using all three methods.</p>	
<p>1. boys to girls</p> <p>9 to 8</p> $\frac{9}{8}$ <p>9:8</p>	<p>2. girls to everybody</p> <p>8 to 17</p> $\frac{8}{17}$ <p>8:17</p>
<p>3. ears to toes</p> <p>34 to 160</p> $\frac{34}{160}$ <p>34:160</p>	

KTL Used Across the Curriculum at NLMS: WAGs

WAG (Writing Assignment Guide)

Writing Task:

Write a summary of the factors that affect the process of Natural Selection

Audience: your peers and your teacher

Purpose: Inform the reader of the factors that affect the process of Natural Selection

Length: Minimum of 3 paragraphs including an introductory paragraph and closing paragraph

Directions and Requirements:

- Provide an introductory paragraph that gives a short description of Darwin's history and theory
- Develop at least one paragraph that identifies and explains the 5 factors that affect the process of Natural Selection
- Provide a conclusion paragraph that includes a description why Natural Selection is an example of microevolution
- Include at least 3 transitional words.
 - First, next, finally, before, after, During, later, also, another, in addition, to sum up, In conclusion, similarly, however, On the contrary, most important, For example, as a result, therefore

Writing Assignment Guides used in
6th grade ELA and 8th grade
Science.

WAG (Writing Assignment Guide) Argumentative Essay about The Titanic

Writing Task:

Who's to blame for the loss of life on the Titanic?
Write a multi-paragraph response to make and support an argument about who was to blame for the loss of life on the Titanic. Include evidence from the passages on Amplify and internet research to develop your claim and support your argument. Make sure you are using information from the passages and internet in your response.

Audience:

Your peers, the teacher

Purpose:

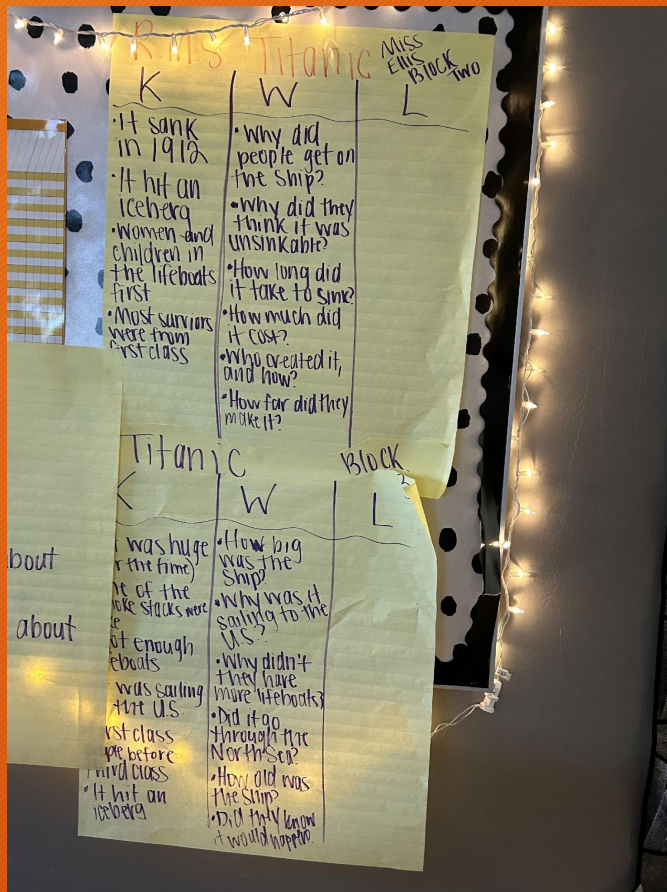
To argue who is to blame for loss of life on the Titanic

Length: 5 paragraphs

Directions & Requirements:

- Use the provided Amplify Titanic passages/ websites.
- Use the outline in the provided packet to organize your essay
- Use the Google Classroom assignment to type your essay
- Essay must be factual with no reference to personal opinion (DO NOT USE I, ME, or MY pronouns)
- Use MLA Format: heading, title, page numbers, margins, proper font and size, single sided, and double spaced.
- Provide a Works Cited Page using MLA format with two credible sources (passages and websites provided)
- Parenthetical references (citing sources throughout the essay)
- Proper grammar, spelling, punctuation, etc.
- Provide an introduction paragraph (1st paragraph)
 - Must include a hook/lead
 - Relevant background or context of the topic and the texts
 - Must be 2-3 sentences, and
 - Thesis statement/Claim- what your essay is going to explain (state a claim about who is to blame for the loss of life on the Titanic AND THREE reasons this is true)
- Provide a body paragraph (2nd paragraph)
 - Transition sentence to introduce first reason
 - Must be 5-7 sentences
 - Explain the "first reason" from your thesis statement/claim. Be sure to include evidence to support your reason.
- Provide a body paragraph (3rd paragraph)
 - Transition sentence to introduce second reason

KTL Used Across the Curriculum at NLMS: KWL Chart and Categorizing



Categorizing Activity

EXPRESSION WORDS			
ADDITION	SUBTRACTION	MULTIPLICATION	DIVISION

Write the following list of words under the correct category.

Quotient	divided	sum
Plus	multiplied by	less than
Subtracted from	added to	product
More than	divided by	minus
Times	group of	difference

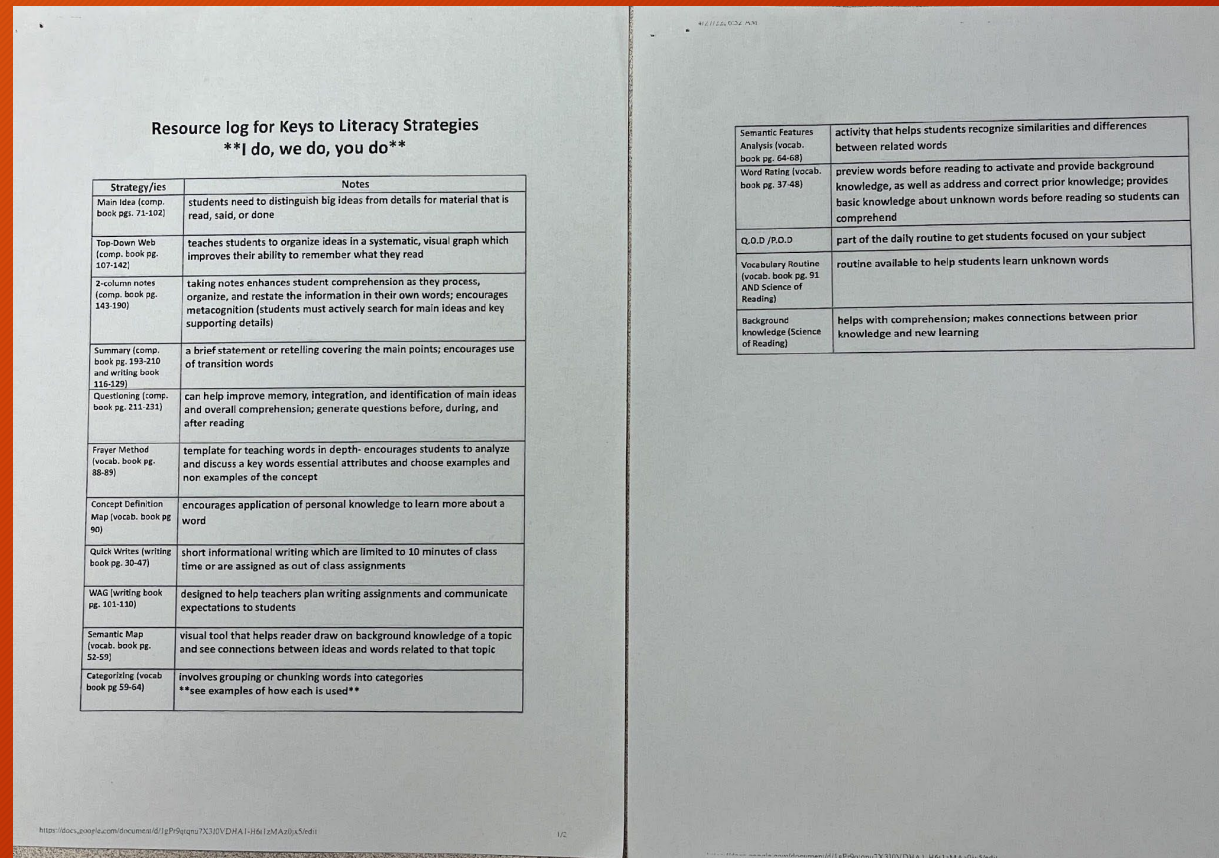
- KWL charts used in 6th grade ELA
- Categorizing Activity used in 6th grade Math.

High School Keys to Literacy Sustainability

Karen Fehrman, New Lexington High School Literacy Coach

High School Keys to Literacy Sustainability

CTL coaches developed this at the end of year 3 to help sustain the program. All high school teachers get a new copy at the beginning of each year as a reminder.



High School Keys to Literacy Sustainability

The image displays four forms used in a coaching process:

- Coach's Full Class Visit Log:** A form for recording a full class visit. It includes fields for Teacher/Subject, Date, Lesson's Learning Target, and a table for Strategy/ies and Notes.
- Class Visit:** A table for recording observations during a class visit. It has columns for Positives and Suggestions for Improvement.
- Quick Note:** A form for recording a quick note. It includes fields for Name and Date, followed by several lines for notes.
- Post Class Visit Discussion:** A form for a post-class visit discussion. It includes several questions for reflection and planning, such as "How would you rank the lesson?", "Why did you give it that ranking?", "How would you change the lesson to make it closer to a 50?", "What would you see the students doing differently?", "Describe what that would look like?", "Should that be your goal for next time?", "What teaching strategies would you like to implement to achieve your goal?", and "How do you plan to move forward?".

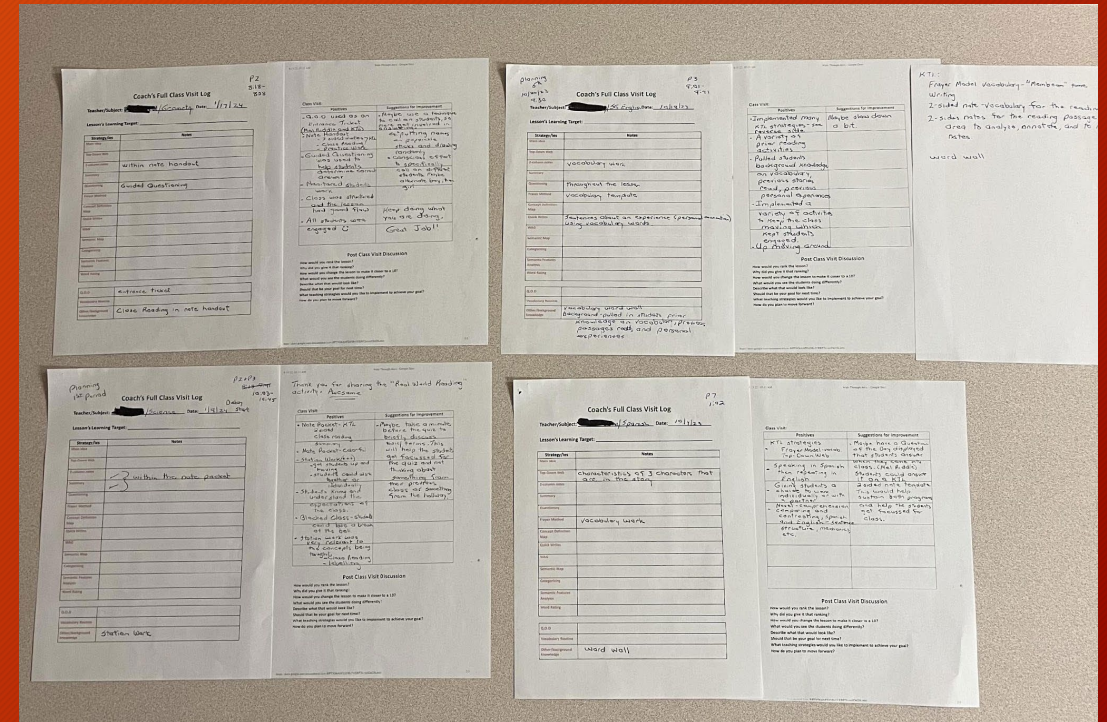
Coach's Corner

Charity and I developed in our first year the Coach's Log and Quick Notes.

High School Keys to Literacy Sustainability

Examples of Coach's Full Class Visit Log

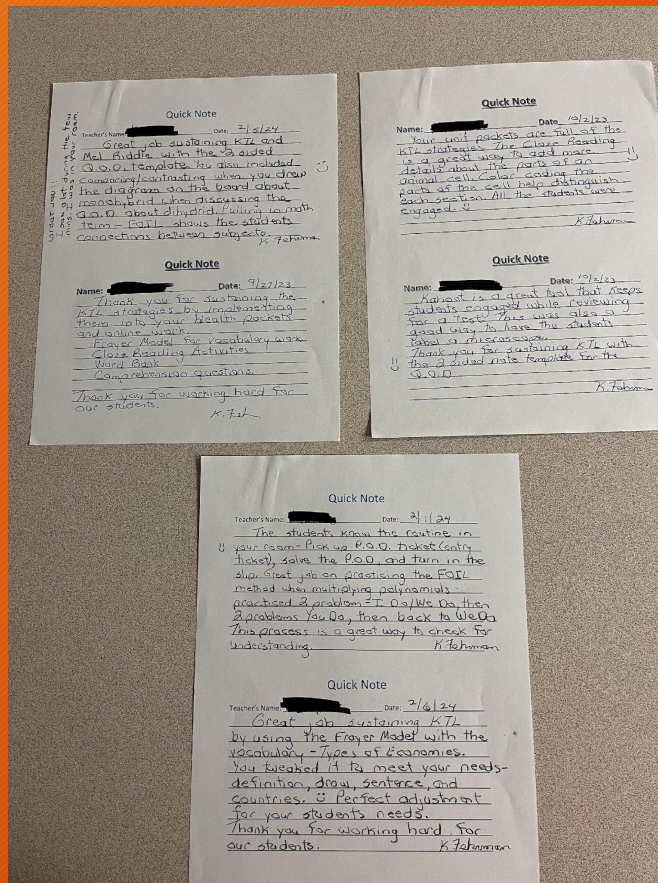
This is where we record KTL Evidence that is being used in the classrooms, as well as positive notes and suggestions for self-reflection.



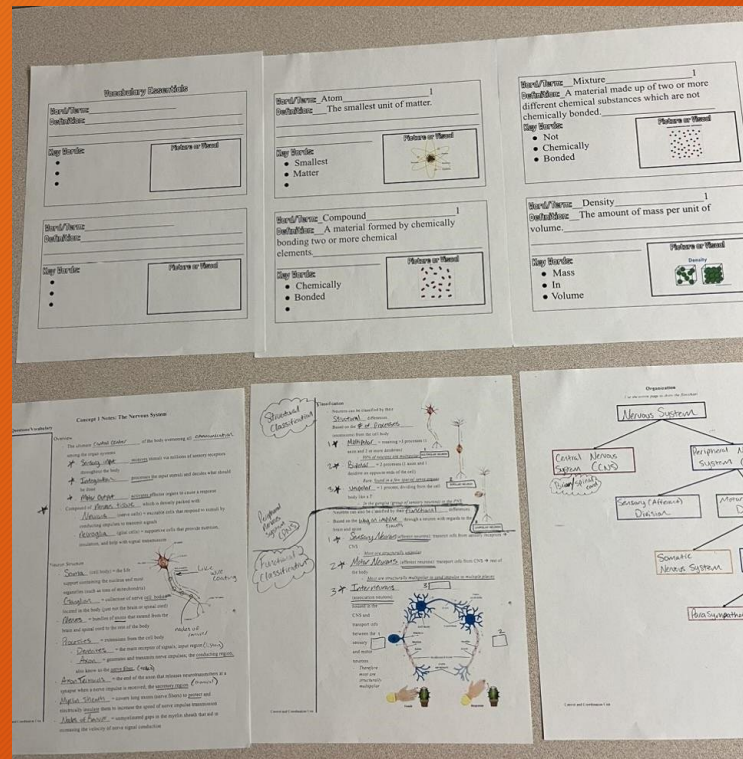
High School Keys to Literacy Sustainability

Quick Notes

We use these to pop into classrooms to express positives that are seen in everyday teaching. This raises morale within our buildings and helps form relationships.

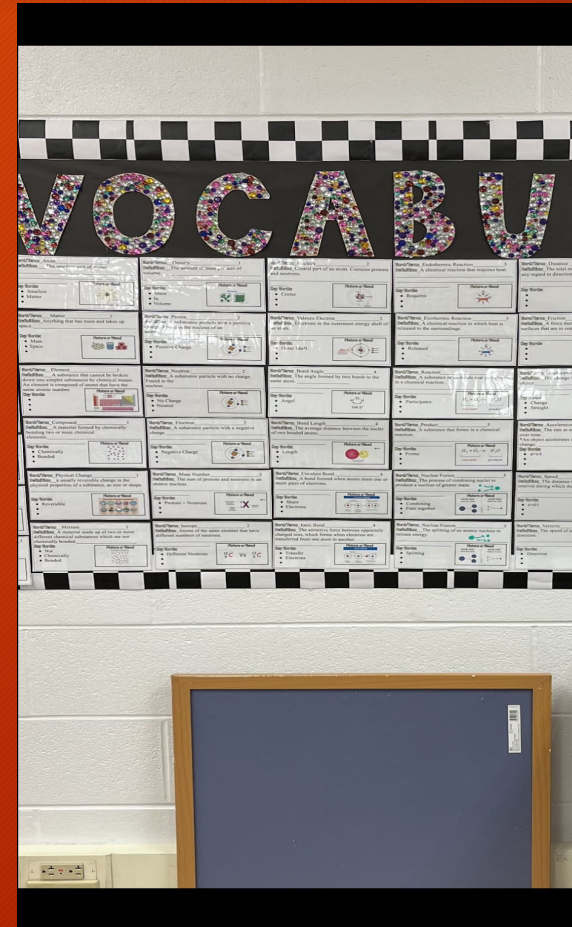


High School KTL Science Examples



Anatomy

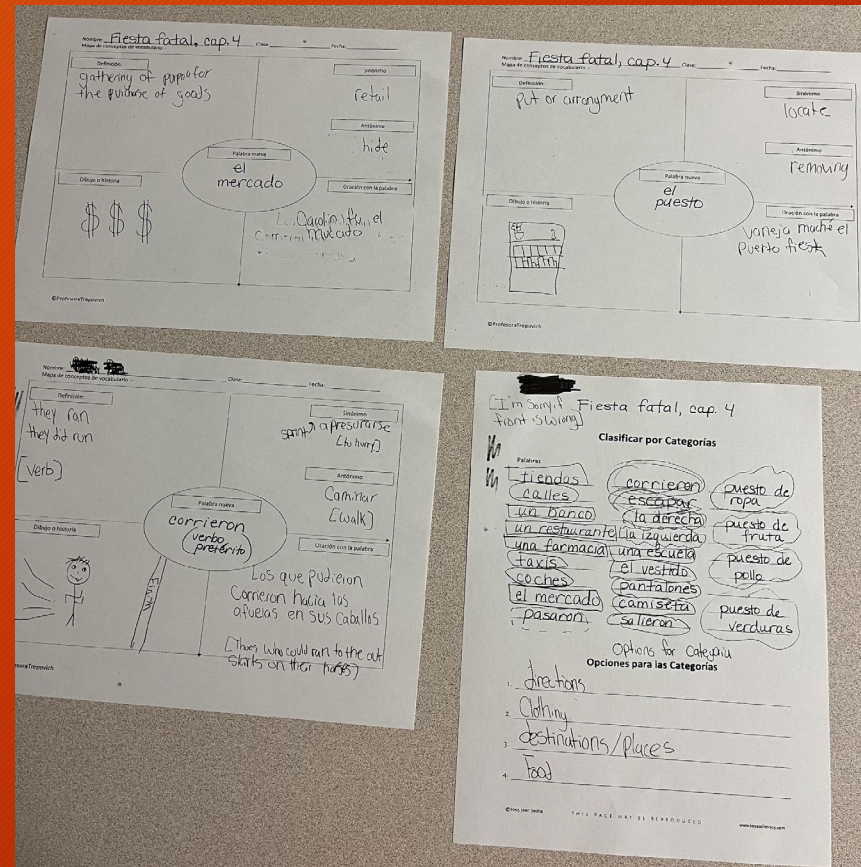
- Cloze Reading
- Top-Down Web



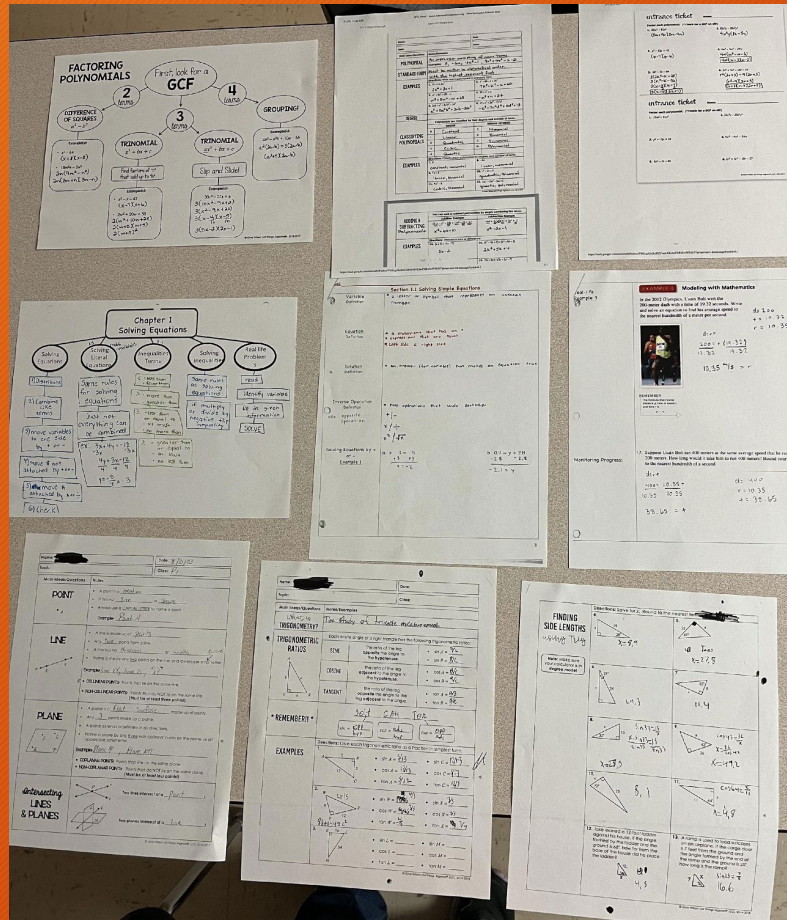
9th Grade Vocabulary Template and Word Wall.

KTL Spanish Examples

- Frayer Model for Vocab
- Categorizing Activity

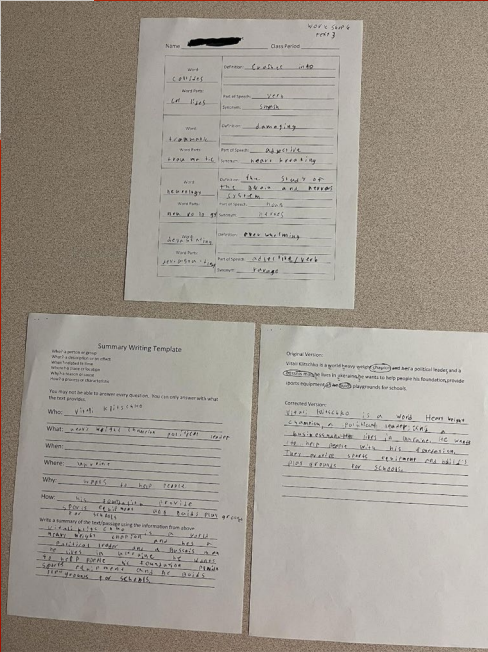
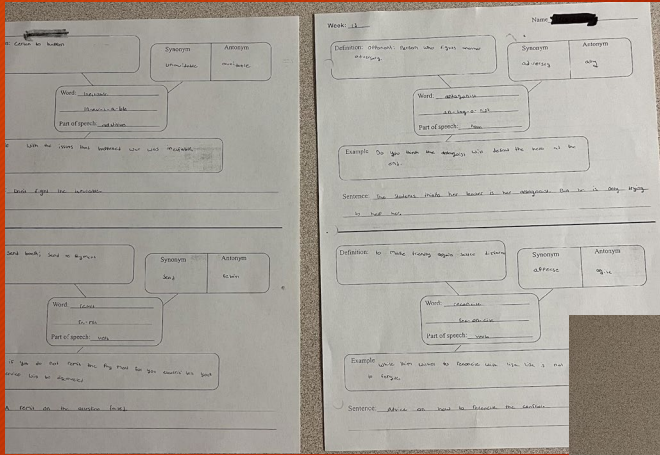
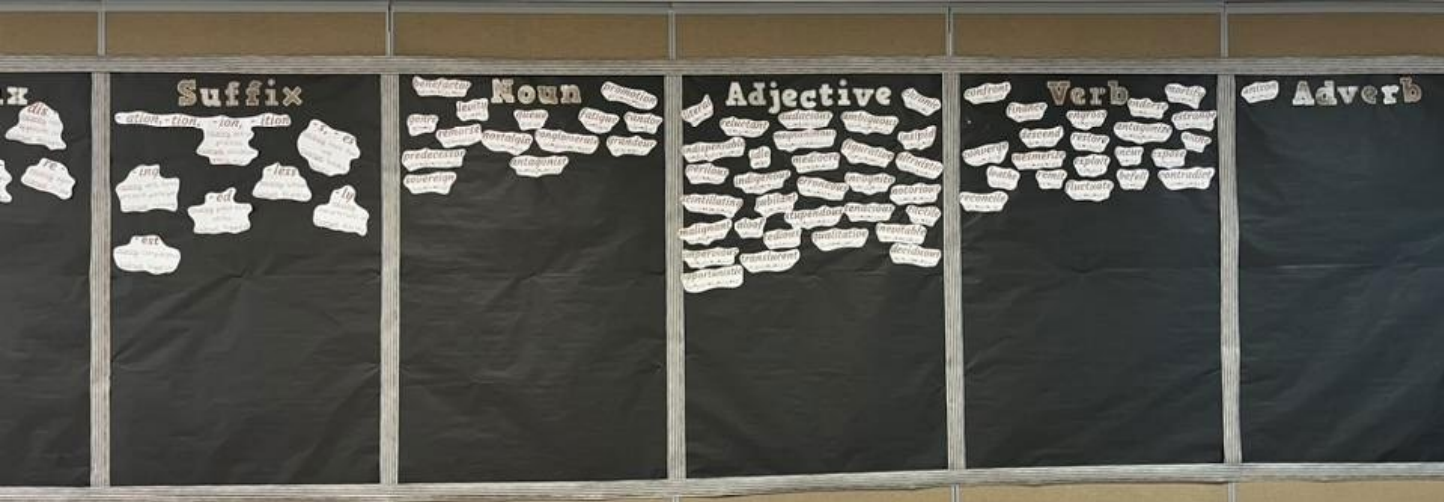


High School KTL Math Examples



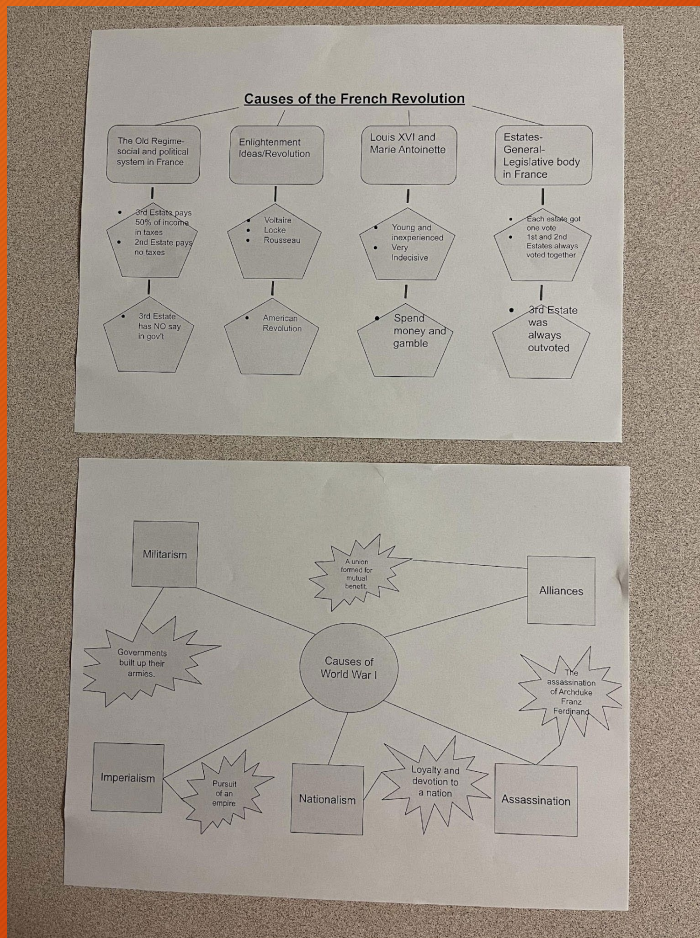
- Top-Down Webs
- Two Sided Notes
- Cloze Reading
- Entrance Tickets
- Practice Problems (I do, We do, You do)

High School KTL ELA Examples



- Vocabulary Two-Sided Notes
- KTL Summary Template
- Modified Frayer Model for Vocabulary
- Word Wall

High School KTL Social Studies Examples



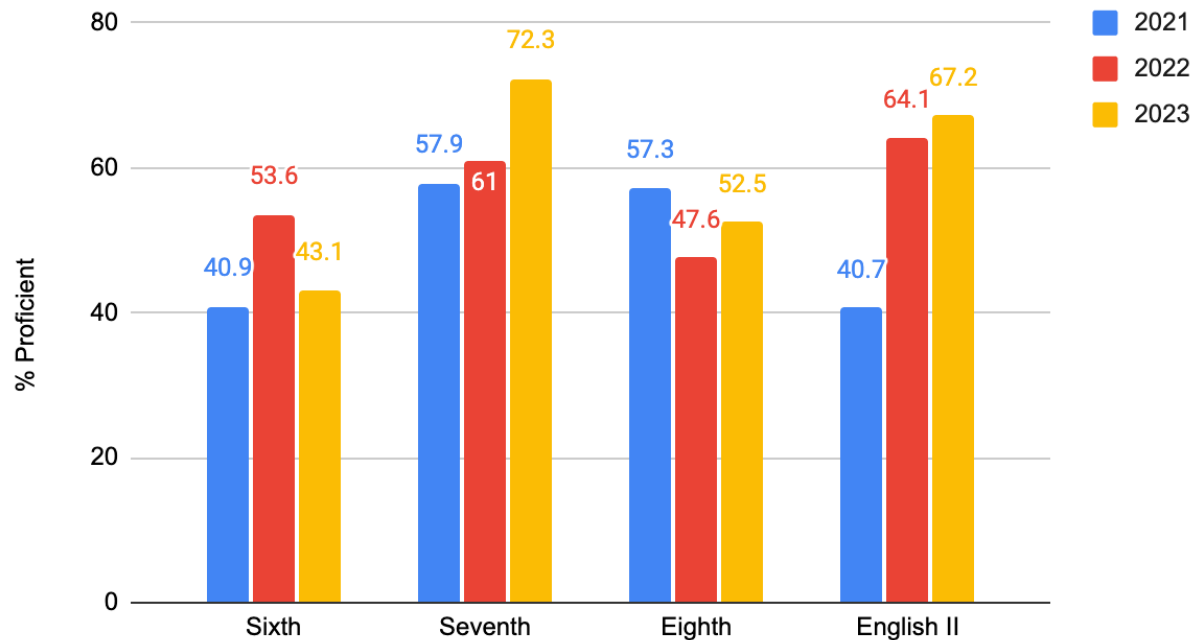
- Top-Down Web
- Semantic Map

Outcomes

- Literacy coaches in both buildings allowed staff to have access all day. Implementation was driven by the literacy coach and administrative staff.
- Educational assistant was used more in one building than the other.
 - In Year 2, changes were made for this position to be high school only.
- Professional Development was job-embedded and new routines were established.
- Test scores started to improve!

Outcomes

NLMS/NLHS ELA Data



At the high school, since implementing KTL and sustaining the program, our state test scores are improving. ELA II has shown improvement the last 3 years. Geometry and History have improved as well. ELA II, History, Government, and Biology all beat the state averages.

At the middle school, seventh grade has met state test scores in both Math and Reading. Sixth and eighth grade ELA have shown expected growth on State Tests. We are also seeing a lot of growth amongst individual students' Lexile levels.

Outcomes

- Whole School Book Read - positives and negatives
- Have some fidelity issues
- Family engagement is still a something we are working on.
- Some non-ELA teachers still struggle with the “why”.

Questions?