

Whole Child Family Supports

Anneliese Johnson, M.S.
Samantha Peterson, M.S.

A. Sophie Rogers School for
Early Learning

Effective Engagement with Young Families



Ohio State University College of Education and Human Ecology

Schoenbaum Family Center and Crane Center
for Early Childhood Research and Policy

A. Sophie Rogers
School for Early
Learning

Crane Center for Early
Childhood Research
and Policy

Schoenbaum
Community Programs

98 children
served in ASR
classrooms

1,758 children
participated in
research
activities

281 children and
families served
through EHS
partnership

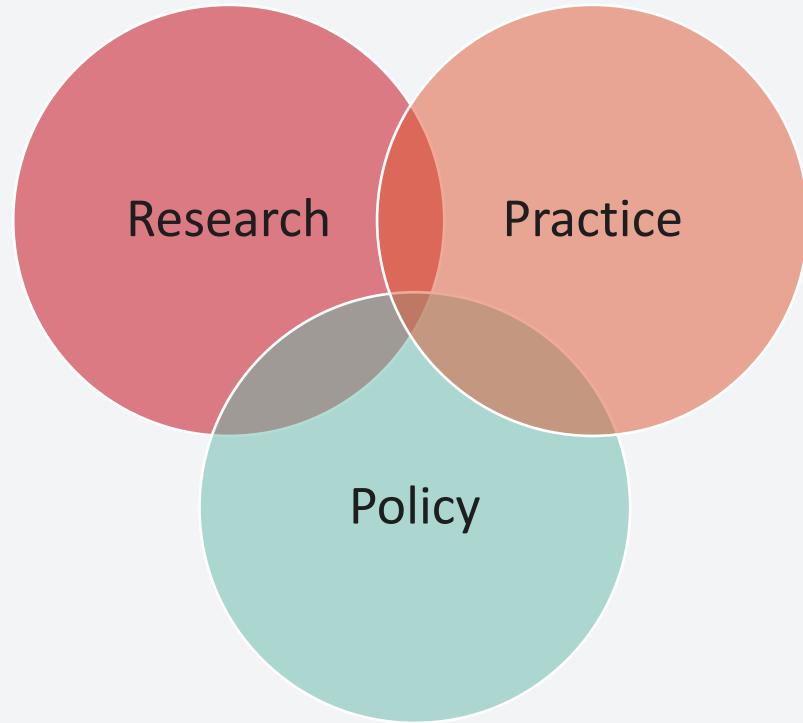


Our mission

Building equitable opportunities for all young children to learn and thrive through practice, policy, research and evaluation.



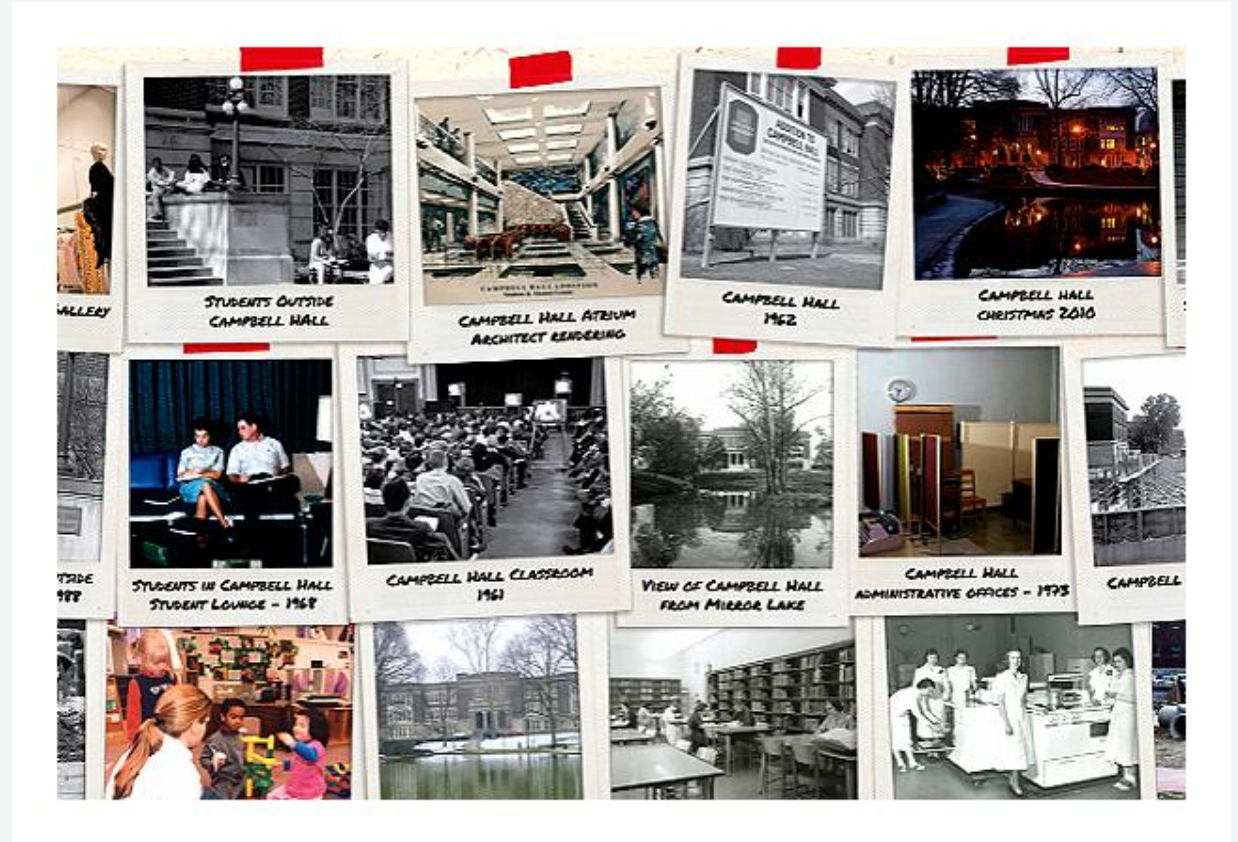
Our work



- Educating children in our model demonstration school and Early Head Start sites across the community
- Partnering across agencies and community groups to serve the holistic needs of children and families
- Conducting high-quality research and evaluations and disseminating these widely
- Translating research for policy makers, child advocates, and parents
- Training the next generation of early childhood practitioners and researchers

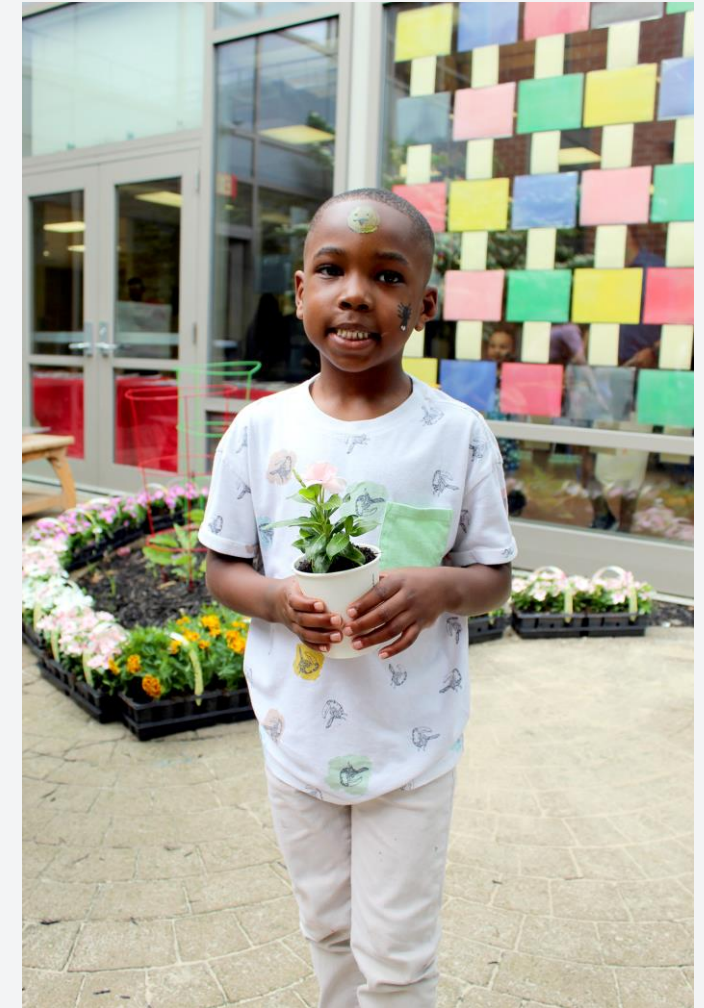
A. Sophie Rogers School for Early Learning

- 84-years on-campus
- Moved to Weinland Park neighborhood in 2007 adjacent to campus
- Enrollment priority given to families living in Weinland Park neighborhood



Mixed-Income Model

Leveraging multiple funding sources and enrollment pathways to support families from diverse backgrounds using family tuition, Publicly Funded Child Care, local, state, and federal grants.



Outline

- **Best practices in early language and literacy**
 - RIA! PreK
 - RIA! Infant/Toddler
- **Family engagement in education**
 - Needs assessment
 - Logic behind implementation
 - Process for preparation
 - Implementation start, monitoring and adjustments
 - Challenges, successes and plans for sustainability



Curricular implementation in school

Classroom practices

- **Read It Again PreK & Read It Again Infant/Toddler**
- **Writing Best Practices**



Curricular implementation in school

Classroom practices

- **Bi-weekly coaching and data meetings**
 - **Coach as manager and supervisor**
 - **Provides pedagogical as well as practical coaching**
 - **High fidelity due to coach familiarity with school climate and culture as well as curriculum**



Family Engagement

- **Ohio's Plan to Raise Literacy Achievement**
 - Nonnegotiable #2
 - Key beliefs and dispositions
 - Creating a Collaborative and Welcoming Culture
 - Nonnegotiable #3
 - Family Partnerships

Family engagement in school

- **Family Literacy Engagement Specialist**
 - **Manages on-site library and collection**
 - **Builds community partnerships**
 - **Surveys families and plans annual plan of activities and engagement based on family input**
 - **Manages multiple communication pathways**
 - **Provides evidence-based storytimes in classrooms and weekly for families**



Shared Spaces for Family Engagement

Library

- **Collection reflective of school population and interests**
- **Open to families during school hours**
- **Families can check out books**
- **Used for weekly Coffee Connections, family and classroom storytimes, family events and visitors**



Shared Spaces for Family Engagement

STEAM studio

- Art, science and literacy materials
- Open to families during school hours
- Classrooms use for experiments and art projects
- Used for family events



Family Engagement Activities

Survey families annually

- Interests, type and frequency
- What books, topics, cultural events, and characters are of interest to your family
- Use university surveying software
- Family Engagement Specialist makes follow up more manageable





Family Storytimes

- Weekly and at end of the day
- Separate young baby/toddler storytime
- Evidence based practices in early language and literacy
- Networking and social space for families



Coffee Connections

- Weekly and changes day of week with semester
- One hour in morning
- School administration, teachers, family engagement specialist and social work intern attend
- Networking and social space for families



Resource Fair

- Beginning of school year event
- Meeting with ancillary services and resources available through school partnerships
- University partnerships include Couple & Family Therapy, Speech Language Pathology, Social Work
- Community partnerships include Columbus Metropolitan Libraries, Columbus City Schools and COSI





Family Yoga

- Certified instructors from culturally-responsive centers/organizations
- Builds social-emotional skills for small children and their caregivers
- PD for teachers to utilize same strategies in classroom to support emotional regulation and executive functioning





Author Visits

- Support and promote local authors
- Representation from local community
- Examples of writing and literacy as a career
- Families and children book signing and meeting real authors and illustrators



Community Visits

- Enrichment activities and experience are vital to building vocabulary and narrative expression
- Opportunities brought into the school to showcase experiences
- Networking and social outlet for families



Kindergarten Transition

- Most requested didactic family engagement
- School ensures children are 'ready' - but families need to be 'ready' as well
- Differences in school districts and options for enrollment
- Preparation for before and after school





End of Year Celebration

- Celebration of school year and accomplishments
- Emphasis on families and children moving on to kindergarten
- Language and literacy take-home
- Networking and social space for families



Family- Led Programs



- Saraswati Puja
- Black History Month
- Lunar/Chinese New Year
- Hispanic Heritage Month Storytime (staff-led)
- Pride Storytime



Saraswati Puja

- A Hindu celebration of the goddess of literacy and the arts, Saraswati
- Circle-time exploration of family's celebration of Saraswati Puja and craft





Lunar New Year

- Celebrations are not monolithic – this is important to consider for holidays such as Lunar New Year which are celebrated in many countries and regions
- Highlights the traditions of enrolled families



Discussion



Contact Us



Anneliese Johnson

johnson.2745@osu.edu

Samantha Peterson

peterson.476@osu.edu

www.earlychildhood.ehe.osu.edu

