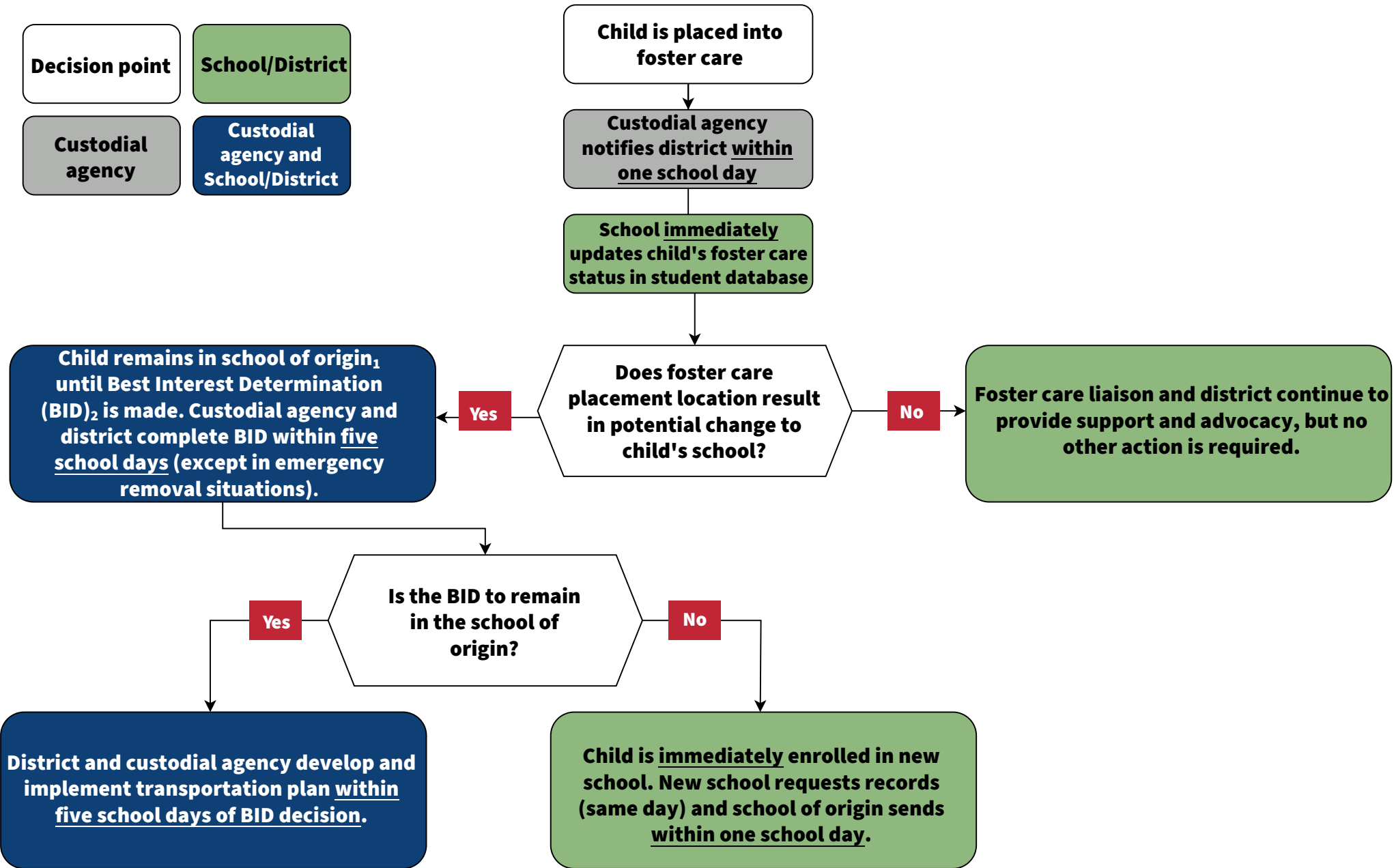


# Foster Care Educational Stability Overview

For implementation details, please read the Ohio Foster Care Joint Guidance document



**1 School of Origin:** The school in which a child is enrolled at the time of placement in foster care. If a child's foster care placement changes, the school of origin would be the school in which the child is enrolled at the time of the placement change.

**2 Best Interest Determination:** Factors considered by custodial agency, district/school personnel, and (if appropriate) the student to ensure the best school placement during the student's time in foster care.